



Aluminum Gas Tank for Stock, TCI & Apicella Design Chevy 3100 Truck Chassis

Thank you for purchasing the **Apicella Designs** Aluminum Gas Tank. Please read and review ALL instructions prior to installation. **Apicella Designs** is NOT responsible for any personal or property damage deriving from the modification and/or installation of this product. ALL modification and/or installation should be performed by a professional.



Features

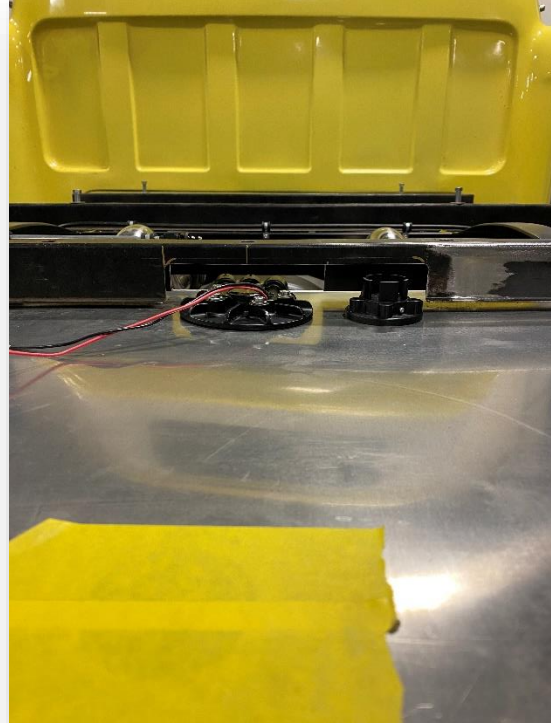
- 1/8" aluminum construction
- Internal baffles & pump sump
- Fully tig welded and pressure tested. Guaranteed leak-free
- Set up for Holley or Aeromotive in tank regulated fuel pumps (EFI or carb) or any in tank pump that uses a 3" mounting hole
- Drilled & tapped for tube style fuel level sender
- Easy install on new or existing truck chassis, including Apicella Designs and TCI chassis*
- Requires drilling six holes for mounting, weld in bungs or fabricating nut plates to complete installation



***Fit to chassis not guaranteed. Please see spec sheet for dimensions prior to purchase. Apicella Designs assumes zero liability for any and all fitment issues and will NOT accept any returns for such reason.**

Notice

1955-59 Chevy trucks need a notch on the crossmember located behind the rear wheels to clear the fuel pump and fuel sender. (Pics)



STOP!

DOUBLE CHECK ALL MEASUREMENTS PRIOR TO DRILLING! DOUBLE CHECKING ALL MEASUREMENTS ASSURES THE FIT AND FINISH OF YOUR APICELLA DESIGNS PRODUCT! THE CUSTOMER ASSUMES ALL LIABILITY FOR ANY MODIFCATION TO THIS PRODUCT AND/OR THE VEHICLE BEING MODIFIED.

Installation Guide

1. Clamp gas tank to frame rails to determine correct placement. **Tip:** Place clamps accordingly so as to not interfere with the drilling process. Center punch mounting flanges for drilling. (Fig A)
2. Using your center punches on the mounting flanges from step 1, pre-drill using 1/8" drill bit. Step up to a larger drill bit to end up with a 3/8" diameter hole. (Fig B)
3. On a fully boxed frame decide whether to weld in bungs (Fig C) to mount the tank or fabricate nut plates. (Fig D)
4. Mount the tank using Grade 8 bolts and always apply thread locker. Torque each to bolt specifications.

fig A



fig B

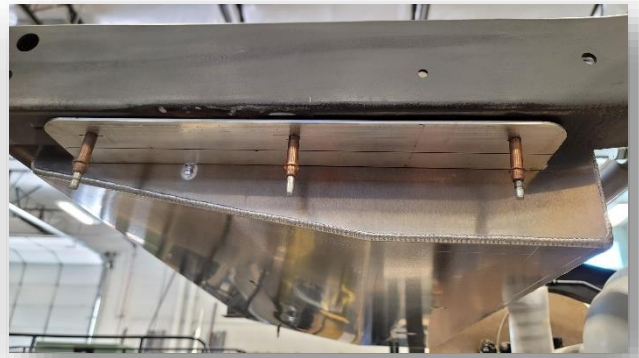


fig C



fig D



Specs

Chevrolet Truck 1941-54 (Full Size)

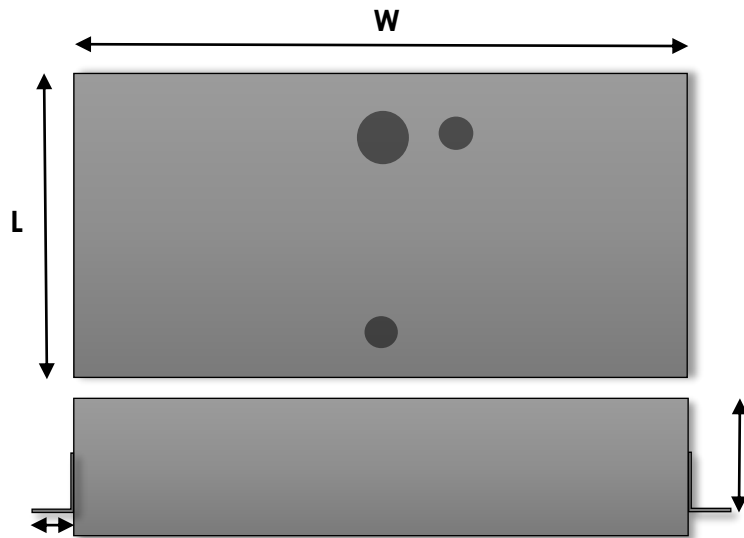
39" W

21" L

8" D

3" Flange Width

5 ⁵/₁₆" Flange Depth-
(from top of tank)



Chevrolet Truck 1955-59 (Narrow)

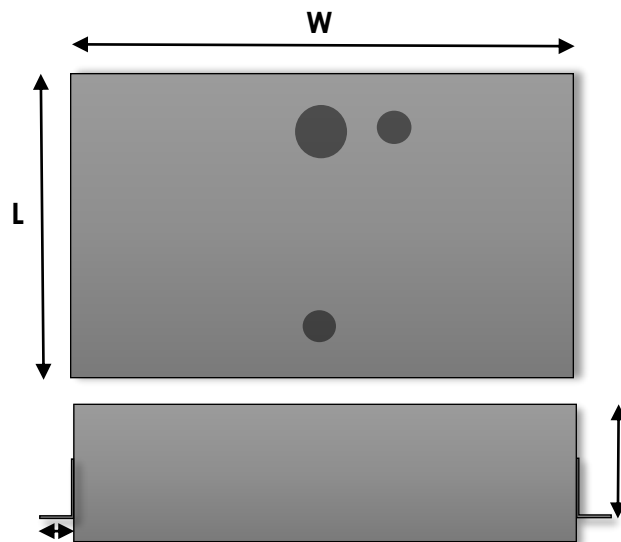
29" W

22" L

9" D

2 ½" Flange Width

4 ⁵/₈" Flange Depth-
(from top of tank)



And that's it, another solid solution from **Apicella Designs**! Check out www.apicelladesigns.com/shop for additional products and information. Don't forget to tag us in your pics on www.facebook.com/apicelladesigns and on [Apicella Designs \(@apicelladesigns\)](https://www.instagram.com/apicelladesigns) • Instagram photos and videos!