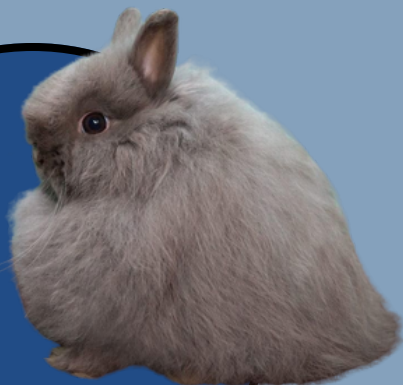


SELF COLOR GROUP





Self Group BLACK

Self Color Group consists of Black, Blue, Blue Eyed White, Chocolate, Lilac, and Ruby Eyed White.

Black-Color is to be uniform black overall, with a slate undercolor. Eyes Brown.

The ideal color for a black should be as dark as possible, with as much pigment in the coat as possible, extending to the skin. The undercolor should be slate (dark gray). Eye Color Brown. Nails should be as dark as possible. Scattered white hairs in the coat are undesirable.



The main fault for black are scattered white hairs. DQ for excessive scattered white hairs.

COMMON PROBLEMS: include scattered white hairs and mismatched nails. In extreme cases, scattered white hairs can give the animal a silvered appearance. Dead coats may cause the animal to appear silvered, but they actually consist of dead guard hairs, not white hairs. A cluster of stray white hairs may be considered a white spot, a disqualification (DQ).

Recommended colors to breed:

BLACK (B_D_): breed with other selfs, such as black, blue, chocolate, lilac, black tortoiseshell, blue-tortoiseshell, chocolate-tortoiseshell, lilac-tortoiseshell.

Also pair with REWs from a self-background. **Blue (B_dd):** Breed to other selfs including black, blue, chocolate, lilac, and their tortoiseshell variants. Pair with self-based REWs.

BLACK (B_Cc or CC) can be bred to Agouti or Agouti-based REWs.



National Jersey Wooly Rabbit Club, Inc.
Learn more about the Jersey Wooly at:
jerseywooly.org





Self Group

BLUE

Self Color Group consists of Black, Blue, Blue Eyed White, Chocolate, Lilac, and Ruby Eyed White.

Blue-Color is to be uniform dark blue overall, with a slate blue undercolor. Eyes Blue-gray.

The ideal color for a blue should be as dark as possible, with as much pigment to the coat, all the way to the skin. The undercolor should be slate(dark gray). Eye Color Blue-gray. Nails should be as dark as possible. Scattered white hairs in the coat are undesirable.



The main faults for blue, are scattered white hairs. DQ for excessive scattered white hairs.

COMMON PROBLEMS: include scattered white hairs and mismatched nails. In extreme cases, scattered white hairs can give the animal a silvered appearance. Dead coats may cause the animal to appear silvered, but they actually consist of dead guard hairs, not white hairs. A cluster of stray white hairs may be considered a white spot, a disqualification (DQ).

Recommended colors to breed:

BLUE (_dd): breed with other selfs, such as black, blue, chocolate, lilac, black tortoiseshell, blue-tortoiseshell, chocolate-tortoiseshell, lilac-tortoiseshell. Also pair with REWs from a self background.

BLUE (Cc or CC dd) can be bred to Agouti or Agouti-based REWs.



National Jersey Wooly Rabbit Club, Inc.
Learn more about the Jersey Wooly at:
jerseywooly.org





Self Group CHOCOLATE

Self Color Group consists of Black, Blue, Blue Eyed White, Chocolate, Lilac, and Ruby Eyed White.

Chocolate-color is to be a medium chocolate brown overall, with a dove-gray undercolor. Eyes-Brown, with a ruby cast permissible.

The ideal color for a chocolate should be as dark as possible, with as much pigment in the coat as possible, extending to the skin. The undercolor should be dove gray. Eye Color Brown. Nails should be as dark as possible. Scattered white hairs in the coat are undesirable.



The main faults for blue, are scattered white hairs. DQ for excessive scattered white hairs.

COMMON PROBLEMS: include scattered white hairs and mismatched nails. In extreme cases, scattered white hairs can give the animal a silvered appearance. Dead coats may cause the animal to appear silvered, but they actually consist of dead guard hairs, not white hairs. A cluster of stray white hairs may be considered a white spot, a disqualification (DQ).



Recommended colors to breed:

Chocolate (bb₋): breed with other selfs, such as black, blue, chocolate, lilac, black. Pointed White (black, blue, chocolate, and Lilac). Also, tortoiseshell (black and blue-tortoiseshell, chocolate-tortoiseshell, lilac-tortoiseshell, not carrying shaded)

To breed for the richest color, the best breeding is with other chocolate carriers. Avoid: Shaded, pointed white, or dilute heavy lines to prevent “muddy” color.



National Jersey Wooly Rabbit Club, Inc.
Learn more about the Jersey Wooly at:
jerseywooly.org



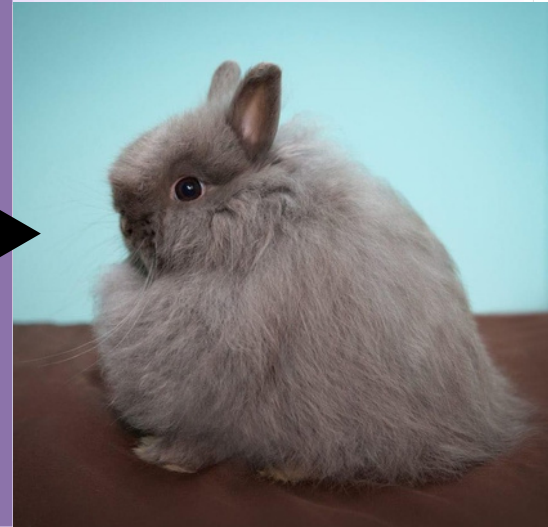


Self Group

LILAC

Self Color Group consists of Black, Blue, Blue Eyed White, Chocolate, Lilac, and Ruby Eyed White.

The ideal color for a lilac should be a uniform dove-gray with a pinkish tint. Eye Color Brown, with a ruby cast permissible. Nails should be as dark as possible. Scattered white hairs in the coat are undesirable.



The main fault for lilac are scattered white hairs. DQ for excessive scattered white hairs.

COMMON PROBLEMS: include scattered white hairs and mismatched nails. In extreme cases, scattered white hairs can give the animal a silvered appearance. Dead coats may cause the animal to appear silvered, but they actually consist of dead guard hairs, not white hairs. A cluster of stray white hairs may be considered a white spot, a disqualification (DQ).

Recommended colors to breed:

LILAC (bb dd): breed with other selfs, such as black, blue, chocolate, lilac. Also, Pointed White (black, blue chocolate, and lilac), Black tortoiseshell, blue-tortoiseshell, chocolate-tortoise shell, lilac-tortoiseshell (not carrying Shaded).
It is best not to breed dilute to dilute to avoid light nails.



National Jersey Wooly Rabbit Club, Inc.
Learn more about the Jersey Wooly at:
jerseywooly.org





Self Group RUBY EYED WHITE

Self Color Group consists of Black, Blue, Blue Eyed White, Chocolate, Lilac, and Ruby Eyed White.

Ruby Eyed White—Color is to be pure white. Eyes—red pupil with pink iris. Toenails are to be white.

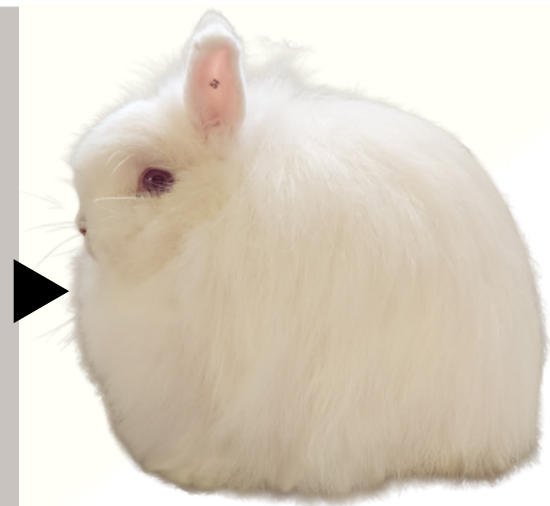


The advantage of a REW is that it will not display color faults other than yellowing and staining of the coat.

A REW is akin to having a blanket covering the rabbit; hiding its genetic traits. Sometimes, test breeding is necessary to reveal what genetics they truly carry.

Recommended colors to breed:

REW (cc): Can be bred to any color group. However, keep Agouti and Chocolate carrying REWs away from shaded lines or shaded carriers. REWs can be used to improve the type and coat between color groups. REWs can also carry hidden genes and modifiers that over time can affect the color.



National Jersey Wooly Rabbit Club, Inc.
Learn more about the Jersey Wooly at:
jerseywooly.org





Self Group BLUE EYED WHITE

Self Color Group consists of Black, Blue, Blue Eyed White, Chocolate, Lilac, and Ruby Eyed White.

Blue Eyed White-Color is to be pure white. Tonails are to be white. Eyes-Blue



The advantages of owning a BEW is that it will not display color faults other then yellowing and staining of the coat.

A BEW can produce BEW, Vienna Marked, and Vienna carriers. A Vienna marked- is a rabbit possessing one copy of the Vienna Gene, which causes white markings, often a white blaze, or toes, and frequently produces blue or marbled eyes. A Vienna Carrier is a rabbit that possesses one copy of the recessive Vienna gene but shows no outward white markings, and can produce BEW rabbits.

Recommended colors to breed:

BEW (vv): The best options to breed to, are black, blue, or another BEW. BEW to BEW is the quickest way to produce more BEW animals. BEW (vv) to a Vienna Carrier (Vv) or a Vienna marked is the most balanced way to grow your BEW numbers.

AVOID- chocolate-based colors, shadeds and Ruby Eyed Whites. **Please Note : All VCs and VMs should be notated on a pedigree. These traits can bring undesirable characteristics into a non BEW herd.**



**National Jersey Wooly Rabbit Club, Inc.
Learn more about the Jersey Wooly at:
jerseywooly.org**



SELF

aa B_ C_ D_ E_

BLACK



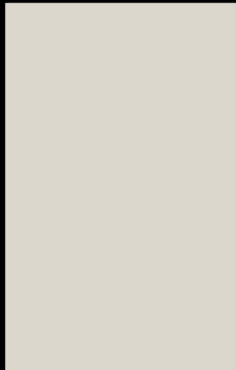
aa B_ C_ dd E_

BLUE



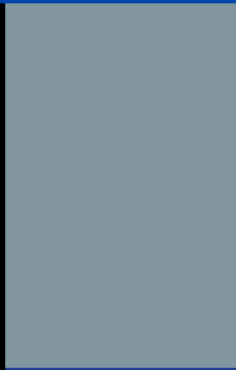
aa bb C_ D E

CHOCOLATE



aa bb C_ dd E_

LILAC



SELF

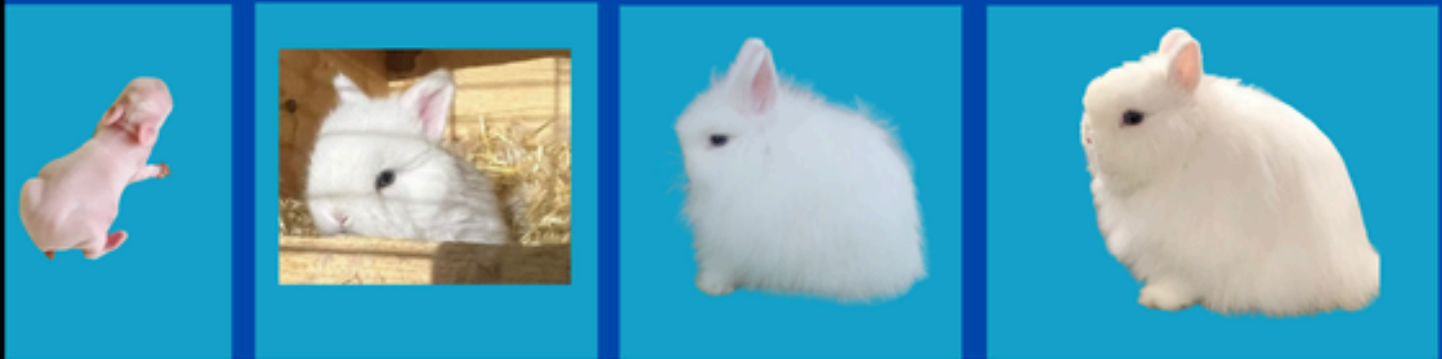
RUBY EYED WHITE

cc



BLUE EYED WHITE

vv



VIENNA MARKED

