



Keeping People **SAFER** and Products **FLOWING**

# Fire Parts Resource Guide

---



Keeping People **SAFER** and Products **FLOWING**

## Contents

Pumper Ladder Parts .....	7
CABLE-1-R.....	7
CABLE-CL-1-R.....	8
CABLE-CL-2-R.....	9
CABLE-RG-R.....	10
CABLE-RG-R1.....	11
CASTING-1-R.....	12
CASTING-2-R.....	13
CASTING-6-R.....	14
CASTING-7-R.....	15
H.D. LOCKS-R.....	16
MUD-GUARD.....	17
PEL-24-BRK-R .....	18
PEL-28-BRK-R .....	19
PEL3-24-BRK-R .....	20
PEL3-28-BRK-R .....	21
PULLEY-1-R.....	22
PULLEY-3-R.....	23
ROOF-HOOKS-R.....	24
ROPE-NM-1 .....	25
ROPE-NM-1-R.....	26
RUB-RUNG-R .....	27
RUNG-BRC-1-R .....	28
RUNG-BRC-2-R .....	29
RUNG-BUSH-R .....	30
RUNG-WEAR-R.....	31
RUNGS.....	32
SAF-SHOE-3-R.....	33
SAF-SHOE-4R.....	34



Keeping People **SAFER** and Products **FLOWING**

SPRING-HDL-R .....	35
SPRED-BAR-R.....	36
STAYPOLE-2-R .....	37
STAYPOLE-3-R .....	38
STAYPOLE-4-R .....	39
STAYPOLE-5-R .....	40
STAYPOLE-6-R .....	41
STAYPOLE-7-R .....	42
STAYPOLE-8-R .....	43
STAYPOLE-9-R .....	44
STAYPOLE-11-R .....	45
STAYPOLE18-R.....	46
STAYPOLE-19-R .....	47
STOP-1-R .....	48
STOP-2-R .....	49
Truss Ladder Parts.....	50
BUSHING-1-R.....	50
BUSHING-2-R.....	51
CABLE-1-R.....	52
CABLE-CL-1-R.....	53
CABLE-CL-2-R.....	54
CABLE-RG-R.....	55
CABLE-RG-R1.....	56
CASTING-8-R.....	57
CASTING-9-R.....	58
END CAP-1-R .....	59
END CAP-2-R .....	60
END CAP-3-R .....	61
END CAP-4-R .....	62
GUSSET-1.....	63



Keeping People **SAFER** and Products **FLOWING**

GUSSET-2..... 64

GUSSET-3..... 65

H.D. LOCK-CH-R..... 66

H.D. LOCK-CH-R1..... 67

H.D. LOCK-CH-R2..... 68

H.D. LOCK-CH-R4..... 69

H.D. LOCKS-R..... 70

MONO BOLT ..... 71

MUD-GUARD..... 72

PULLEY-1-R..... 73

PULLEY-3-R..... 74

REN-CH-R-1 ..... 75

ROOF-HOOKS-R..... 76

ROPE-NM-1 ..... 77

ROPE-NM-1-R..... 78

RUNG-BRC-1-R ..... 79

RUNG-BRC-2-R ..... 80

RUNG-BRC-3-R ..... 81

RUNG-WEAR-R..... 82

RUNGS..... 83

SPRED-BAR-R..... 84

STAYPOLE-2-R ..... 85

STAYPOLE-5-R ..... 86

STAYPOLE-6-R ..... 87

STAYPOLE-7-R ..... 88

STAYPOLE-9-R ..... 89

STAYPOLE-17-R ..... 90

STAYPOLE18-R..... 91

STAYPOLE-19-R ..... 92

STOP-3-R ..... 93



Keeping People **SAFER** and Products **FLOWING**

Fiberglass Ladders.....	94
CABLE-1-R.....	94
CABLE-CL-1-R.....	95
CABLE-CL-2-R.....	96
CABLE-RG-R.....	97
CABLE-RG-R1.....	98
CASTING-8-R.....	99
DLLH-GUS-R.....	100
END CAP-1-R.....	101
FEL-BRK-1-R.....	102
FEL-BRK-2-R.....	103
H.D. LOCKS-R.....	104
H.D. LOCKS-CH-R4.....	105
PULLEY-1-R.....	106
PULLEY-3-R.....	107
REN-CH-R-1.....	108
ROOF-HOOKS-R.....	109
ROPE-NM-1.....	110
ROPE-NM-1-R.....	111
RUNG-BRC-1-R.....	112
RUNG-BUSH-R.....	113
RUNGS.....	114
RUNG-WEAR-R.....	115
SPRED-BAR-R.....	116
Folding Ladder Parts.....	117
CASTING-10-R.....	117
FL-HANDLE-R.....	118
FL-HINGE-R.....	119
FL-P-BRK-T.....	120
FL-RIVET-R.....	121



Keeping People **SAFER** and Products **FLOWING**

FL-RUNG-R.....	122
SAF-SH-TONGUE-R1 .....	123
SAF-SHOE-1-R.....	124
Attic Extension Ladder Parts .....	125
CASTING-1-R.....	125
CASTING-6-R.....	126
H.D. LOCKS-R.....	127
PEL-24-BRK-R .....	128
RUNG-BRC-1-R .....	129
RUNG-BUSH-R.....	130
RUNGS.....	131
SAF-SHOE-3-R.....	132
SPRING-HDL-R .....	133
STOP-1-R .....	134
Combination Ladders.....	135
BRK070L-R.....	135
BRK070R-R .....	136
CASTING-4-R.....	137
DLLH-GUS-R.....	138
H.D. LOCKS-R.....	139
PLT-070-F-R.....	140
PLT-070-M-R .....	141
RUNG-BUSH-R.....	142
RUNGS.....	143
SAF-SHOE-2-R.....	144
SPRING-HDL-R .....	145
STOP-CJL-R .....	146
STUD-3-R.....	147
Boom Ladders .....	148
CASTING-3-R.....	148

## Pumper Ladder Parts

### CABLE-1-R

#### Ladders Used For:

3-Section Ladder (Fly Section)

#### Description:

3/16" aircraft cable, cut to size

#### Questions to ask:

1. What is the serial number?



**CABLE-CL-1-R**

**Ladders Used For:**

3-Section Ladder

**Description:**

3/16" cable clamps, (4) clamps required per cable

**Questions to ask:**

None





**CABLE-CL-2-R**

**Ladders Used For:**

3-Section Ladder

**Description:**

3/16" crimping clamps, must have a crimping tool to use crimps (for city of Chicago)

**Questions to ask:**

None



## **CABLE-RG-R**

### **Ladders Used For:**

3-Section Ladder (Bottom Rung on Fly Section)

### **Description:**

Cable ring and rung band for bottom rung

### **Questions to ask:**

None



## **CABLE-RG-R1**

### **Ladders Used For:**

3-Section Ladder (Second Rung Down from Top of Butt Section)

### **Description:**

Double cable ring and rung band for three section ladder, cable, and rope

### **Questions to ask:**

None



## CASTING-1-R

### Ladders Used For:

PRL-08 thru PRL-20

PEL-12 thru PEL-24

AEL-10 thru AEL-14

PEL3-16

PEL3-19

PEL3-24

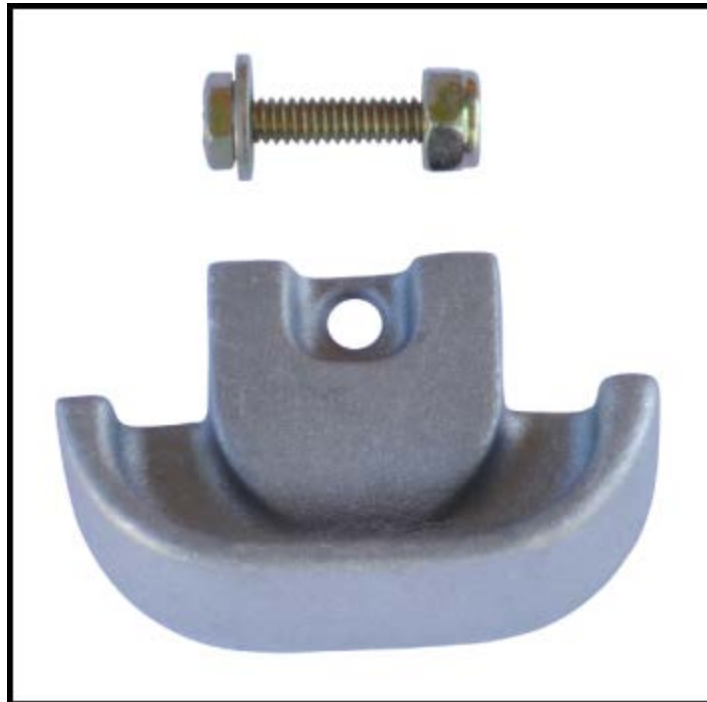
BL-04

### Description:

Rounded end cap for pumper ladder with 2 7/8" high side rail; For ladders up to 24'-0"

### Questions to ask:

1. What is the serial number?
2. What is the type of ladder?
3. What is the size of the side rail?



## CASTING-2-R

### Ladders Used For:

PEL-28 thru PEL-35

PEL3-28 thru PEL3-40

### Description:

Rounded end casting for heavy duty pumper type ladder with 3 3/8" side rail

### Questions to ask:

1. What is the serial number?
2. What is the type of ladder?
3. What is the size of the rail?



## CASTING-6-R

### Ladders Used For:

PRL-08 thru PRL-20

PEL-12 thru PEL-24

AEL-10 thru AEL-14

PRL3-16

PEL3-19

PEL3-24

### Description:

Bottom spike or butt spur for pumper ladders with 2 7/8" high side rail; For ladders up to 24'-0".

### Questions to ask:

1. What is the serial number?
2. What is the type of ladder?
3. What is the size of the side rail?



## CASTING-7-R

### Ladders Used For:

PEL-28 thru PEL-35

PEL3-28 thru PEL3-40

### Description:

Bottom spike for 3 3/8" rail; For ladders 28'-0" and above including three (3) section ladders.

### Questions to ask:

1. What is the serial number?
2. What is the type of the ladder?
3. What is the size of the side rail?



## H.D. LOCKS-R

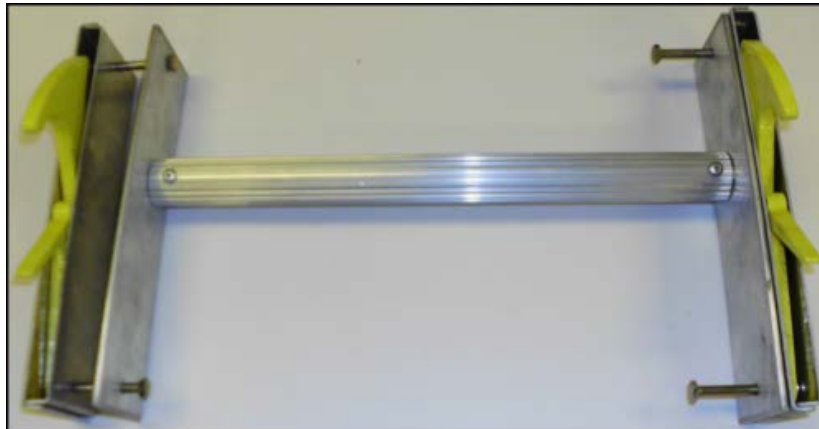
### Ladders Used For:

### Description:

Heavy duty locks with rung

### Questions to ask:

1. What style ladder is this going on (pumper or truss)?
2. Is this a (2) section or (3) section ladder?
3. Is this for the *Fly Section* or the *Nest Section*?
4. What is the serial number?
5. Does this need to be assembled?





## **MUD-GUARD**

### **Ladders Used For:**

### **Description:**

Bottom of base section to prevent ladder from sinking in the mud.

### **Questions to ask:**

1. What is the serial number?
2. What is the type of ladder (pumper or truss)?



## PEL-24-BRK-R

### Ladders Used For:

PEL-12 thru PEL-24

PEL3-16 thru PEL3-19

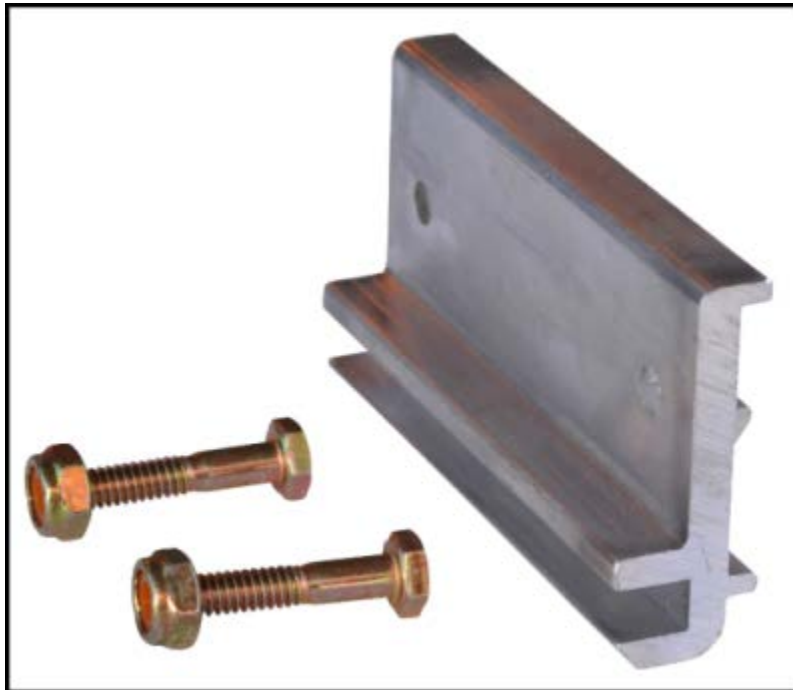
AEL-10 thru AEL-14

### Description:

4" guide bracket for PEL-24 and below, light duty

### Questions to ask:

1. What is the serial number?



**PEL-28-BRK-R**

**Ladders Used For:**

PEL-28 thru PEL-35

**Description:**

4" guide bracket for PEL-28 and above, heavy duty; For ladders 28'-0" and above.

**Questions to ask:**

1. What is the serial number?



**PEL3-24-BRK-R**

**Ladders Used For:**

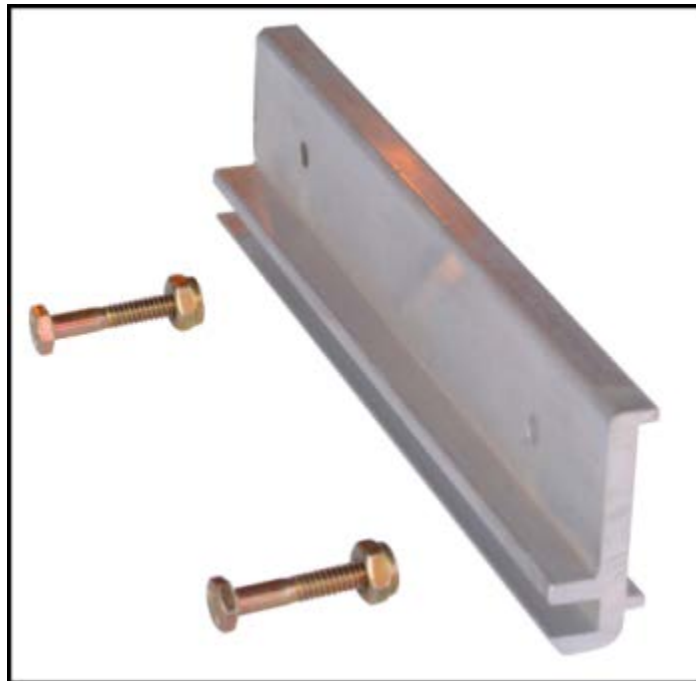
PEL3-24

**Description:**

9” guide bracket for PEL3-24 ladder, light duty

**Questions to ask:**

1. What is the serial number?



## PEL3-28-BRK-R

### Ladders Used For:

PEL-28 thru PEL-35

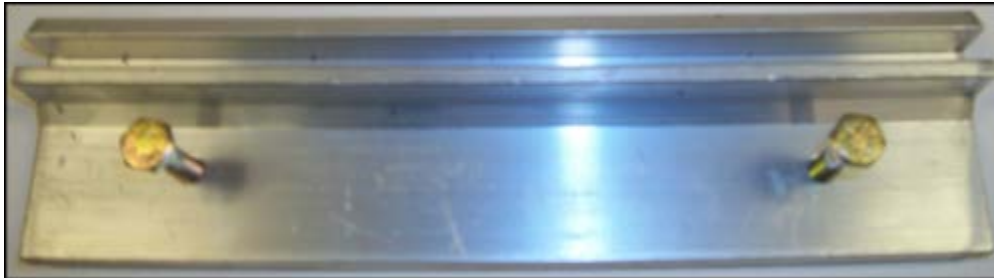
PEL3-28 thru PEL3-40

### Description:

9" guide bracket for PEL3-28 ladder and above, heavy duty

### Questions to ask:

1. What is the serial number?



**PULLEY-1-R**

**Ladders Used For:**

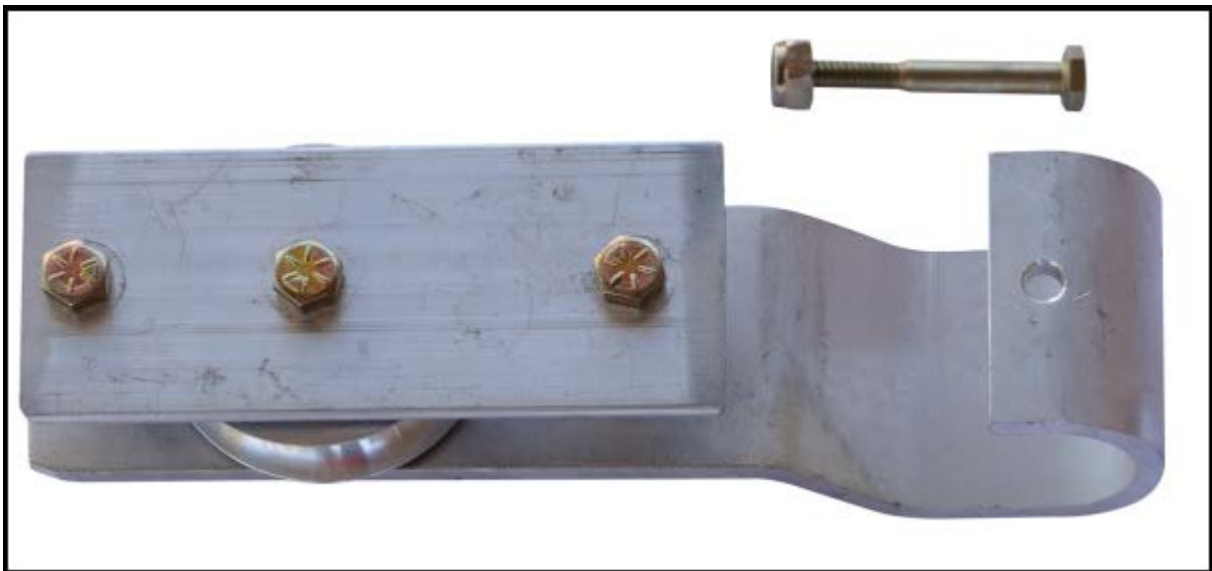
**Description:**

Single straight pulley; For ladder up to

24'-0"

**Questions to ask:**

None



## **PULLEY-3-R**

### **Ladders Used For:**

PEL-28 thru PEL-35                      PEL3-28 thru PEL3-40

TEL-28 thru TEL-40                      TEL3-24 thru TEL3-40

FEL-28 thru FEL-40                      FEL3-24 thru FEL3-40

### **Description:**

Double straight pulley; For a 28'-0" and above

### **Questions to ask:**

1. What is the serial number?



## ROOF-HOOKS-R

### Ladders Used For:

### Description:

Set of roof hooks with spreader bar Questions

### to ask:

1. What is the serial number?
2. What is the type of ladder (pumper or truss)?





**ROPE-NM-1**

**Ladders Used For:**

**Description:**

1/2" dia. (diameter) non-manila rope, 600' feet coil, ships via Class 150, Weight: 32lbs (Halyard)

NFPA 1931: Rope shall not be less than 3/8" diameter and shall have a minimum breaking strength of 82.5 lbs.

**Questions to ask:**

None



## ROPE-NM-1-R

### Ladders Used For:

### Description:

½” dia. (diameter) non-manila rope, cut to size

### Questions to ask:

1. What is the serial number?
2. What is the size of the ladder?



**RUB-RUNG-R**

**Ladders Used For:**

**Description:**

Replacement rubber tube to replace rubber covered rungs with clips 15 ¼” long

**Questions to ask:**

1. What is the serial number?



**RUNG-BRC-1-R**

**Ladders Used For:**

**Description:**

Grey Brothers rung brace for ladders (plated)

**Questions to ask:**

None



## RUNG-BRC-2-R

### Ladders Used For:

### Description:

Replacement bottom rung brace for (3) section pumber ladders, bottom rung brace for (2) section truss ladders, measures 3/8" x 3/4" x 8 3/4"

### Questions to ask:

None



**RUNG-BUSH-R**

**Ladders Used For:**

**Description:**

Replacement 1.15" O.D x 2" bushing

**Questions to ask:**

None



## **RUNG-WEAR-R**

### **Ladders Used For:**

### **Description:**

Rung wear sleeve

### **Questions to ask:**

None



## RUNGS

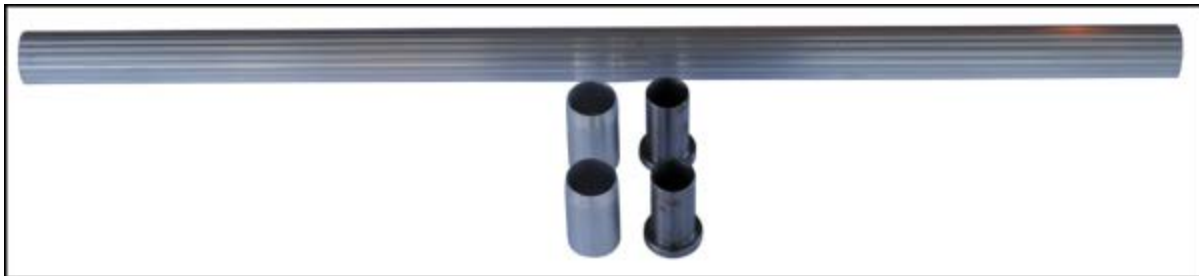
### Ladders Used For:

### Description:

1 ¼"OD x 26" long rung with bushings, includes (2) spanner bushings

### Questions to ask:

1. What style ladder is this going on (pumper or truss)?
2. If this is a truss style, what section is this to be installed in (*Butt, Nest Section* or *Fly Section*)?





**SAF-SHOE-3-R**

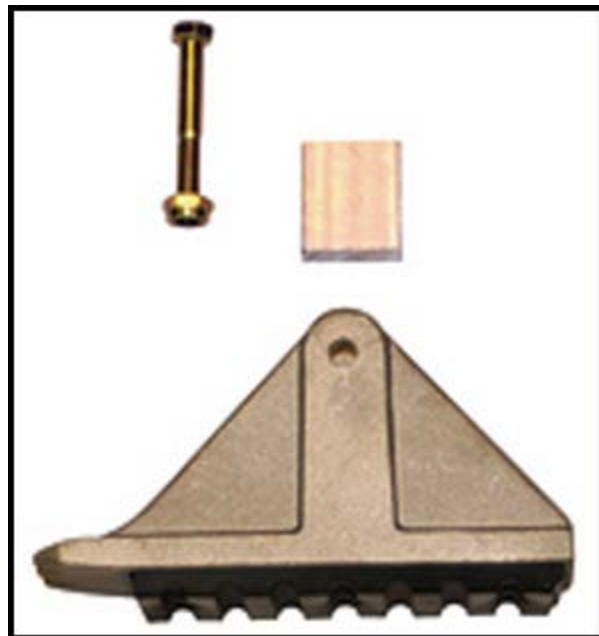
**Ladders Used For:**

**Description:**

Replacement shoe for 2 7/8" side rail; For ladders up to 24'-0"

**Questions to ask:**

None



## SAF-SHOE-4R

### **Ladders Used For:**

### **Description:**

Replacement shoe for 3 3/8" side rail; For ladders 28'-0" and above.

### **Questions to ask:**

None



## SPRING-HDL-R

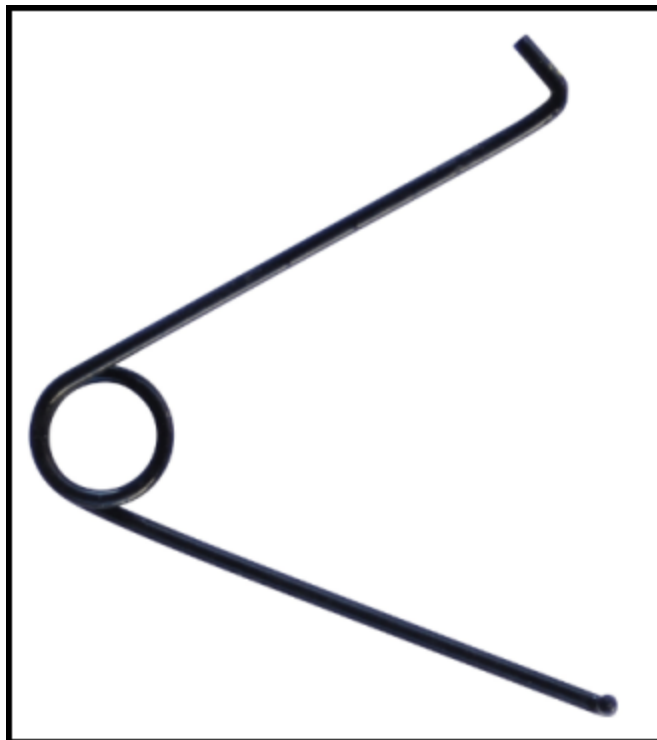
### Ladders Used For:

### Description:

Heavy duty lock spring, replacement spring for all heavy duty (H.D) locks

### Questions to ask:

None



**SPRED-BAR-R**

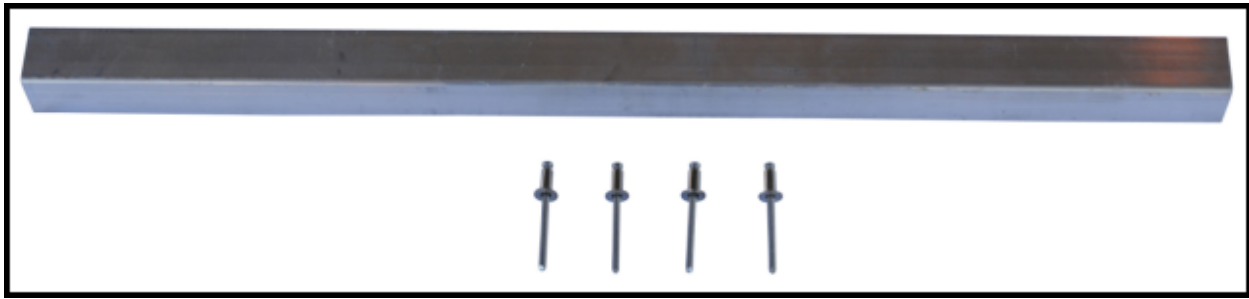
**Ladders Used For:**

**Description:**

Spreader bar for roof hooks, measures 18” long, 1” square x 1/8” wall tubing

**Questions to ask:**

None



## STAYPOLE-2-R

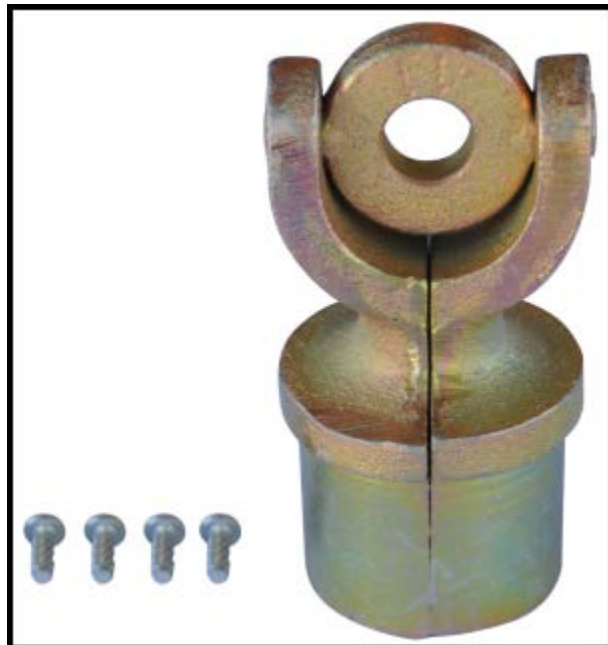
### Ladders Used For:

For Pumper and Truss ladders **Description:**

Staypole top

### Questions to ask:

None



## **STAYPOLE-3-R**

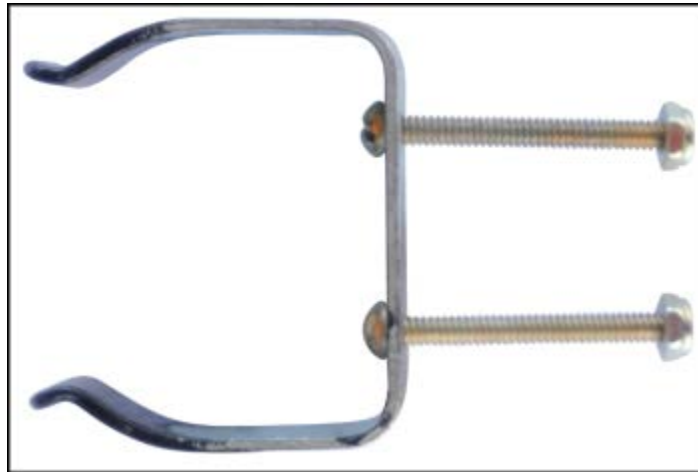
### **Ladders Used For:**

### **Description:**

Staypole spring clip for pumper ladder only

### **Questions to ask:**

None



## **STAYPOLE-4-R**

### **Ladders Used For:**

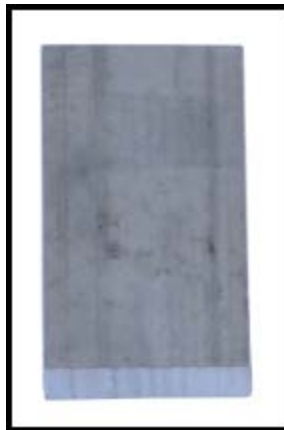
For Pumper ladders ONLY

### **Description:**

Staypole spring clip spacer

### **Questions to ask:**

None



## STAYPOLE-5-R

### Ladders Used For:

For Pumper and Truss ladders **Description:**

Staypole stud

### Questions to ask:

None





## STAYPOLE-6-R

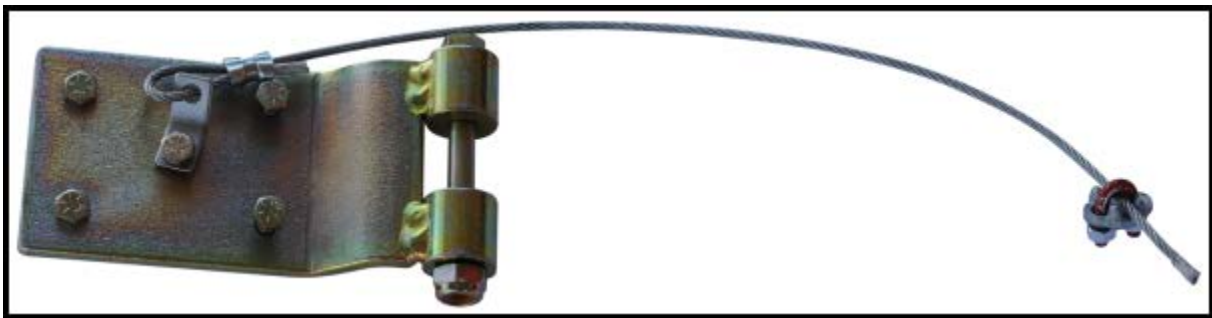
### Ladders Used For:

### Description:

Staypole hinge with safety cable Questions

### to ask:

None



## STAYPOLE-7-R

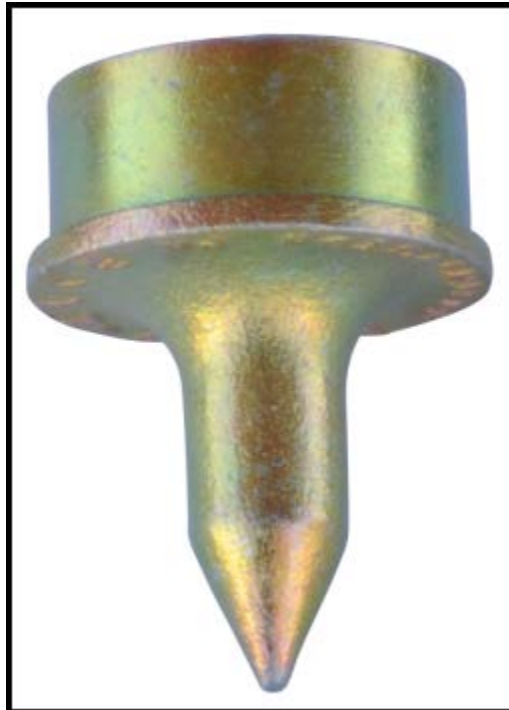
### Ladders Used For:

For Pumper and Truss ladders **Description:**

Staypole bottom

### Questions to ask:

None



## STAYPOLE-8-R

### Ladders Used For:

For Pumper ladders ONLY

### Description:

Staypole hinge

### Questions to ask:

None



## **STAYPOLE-9-R**

### **Ladders Used For:**

### **Description:**

Staypole hinge arm, (2) required, pumper style ladders only

### **Questions to ask:**

None



**STAYPOLE-11-R**

**Ladders Used For:**

**Description:** Staypole hinge spacer, (2) required, pumper ladder only

**Questions to ask:**

None



**STAYPOLE18-R**

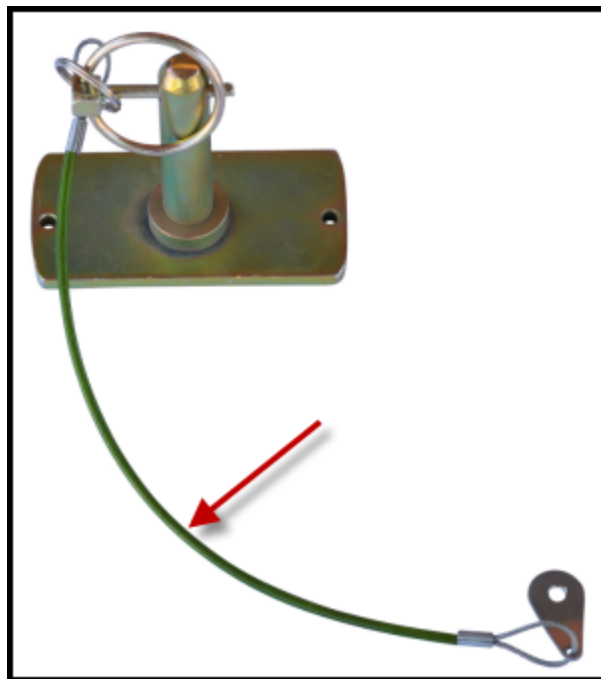
**Ladders Used For:**

**Description:**

Lanyard (for truss ladders only)

**Questions to ask:**

None



## STAYPOLE-19-R

### Ladders Used For:

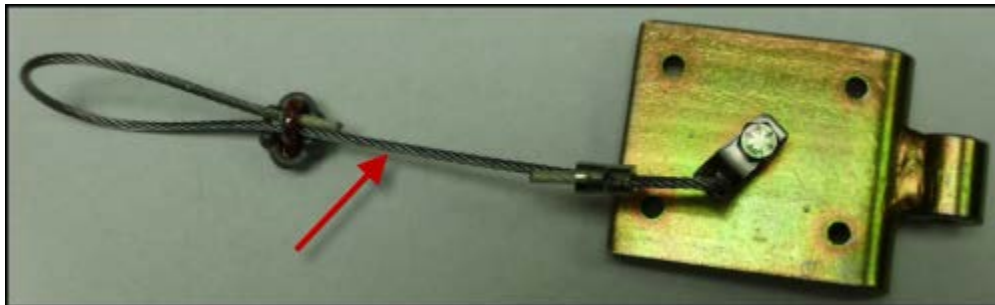
For Pumper type ladders ONLY

### Description:

Safety Cable

### Questions to ask:

None



## STOP-1-R

### Ladders Used For:

PEL12 thru PEL-24

PEL3-16

AEL-10

AEL-14

PEL3-19

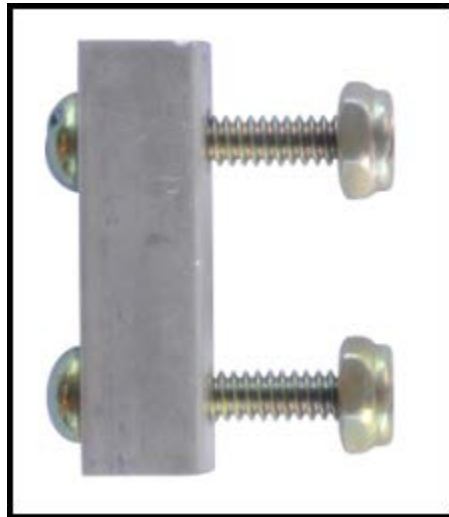
PEL3-24

### Description:

Stop for pumper ladder with 2 7/8" high side rail

### Questions to ask:

1. What is the serial number?





## STOP-2-R

### Ladders Used For:

PEL-28 thru PE-35

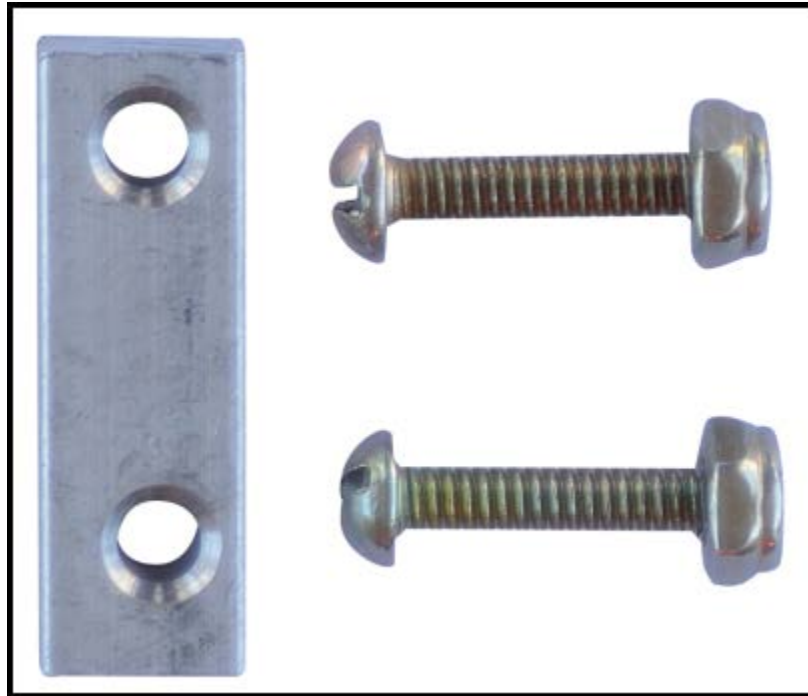
PEL3-28 thru PEL3-40

### Description:

Stop for pumper ladder with 3 3/8" high side rail

### Questions to ask:

1. What is the serial number?



## Truss Ladder Parts

### BUSHING-1-R

#### Ladders Used For:

#### Description:

Measures 1.15" x 2 ¼", replacement bushing for replacing rungs in truss type ladder base section

#### Questions to ask:

None



## BUSHING-2-R

### **Ladders Used For:**

Truss ladders

### **Description:**

Measures 1.15" x 2 7/8", replacement bushing for replacing rung in truss type ladder in *Nest Section* and *Fly Section*.

### **Questions to ask:**

None



**CABLE-1-R**

**Ladders Used For:**

3-Section ladders (Fly section) **Description:**

3/16" aircraft cable, cut to size

**Questions to ask:**

1. What is the serial number?



**CABLE-CL-1-R**

**Ladders Used For:**

3-Section ladders (Fly section)

**Description:**

3/16" cable clamps (If the customer does not have a crimping tool, they must purchase (4) of this part.)

**Questions to ask:**

None



**CABLE-CL-2-R**

**Ladders Used For:**

3-Section ladders (Fly section)

**Description:**

3/16" crimping clamps \*Must have a crimping tool to use crimps (For City of Chicago)\*

**Questions to ask:**

None



**CABLE-RG-R**

**Ladders Used For:**

**Description:**

Cable ring and rung band for bottom rung

**Questions to ask:**

None



**CABLE-RG-R1**

**Ladders Used For:**

**Description:**

Double cable ring and rung band for three section ladder, cable, and rope

**Questions to ask:**

None





**CASTING-8-R**

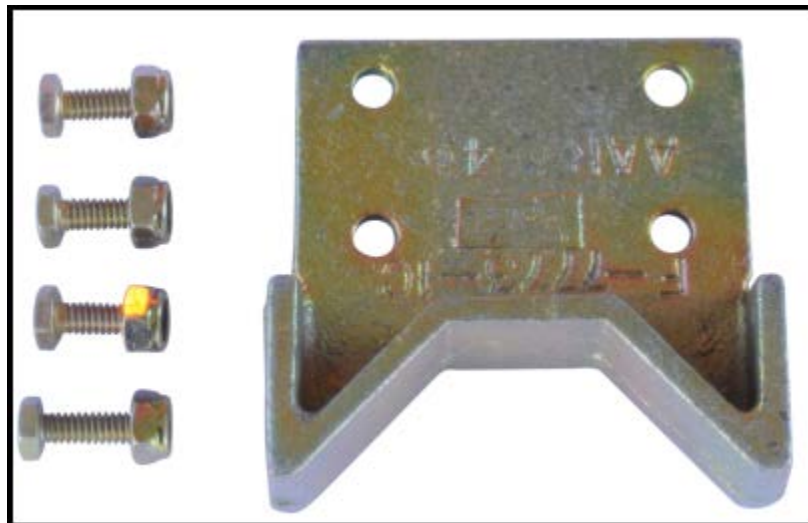
**Ladders Used For:**

**Description:**

Bottom spike or butt spur for a TRL & TWL; For ladders up to 24'-0".

**Questions to ask:**

None



**CASTING-9-R**

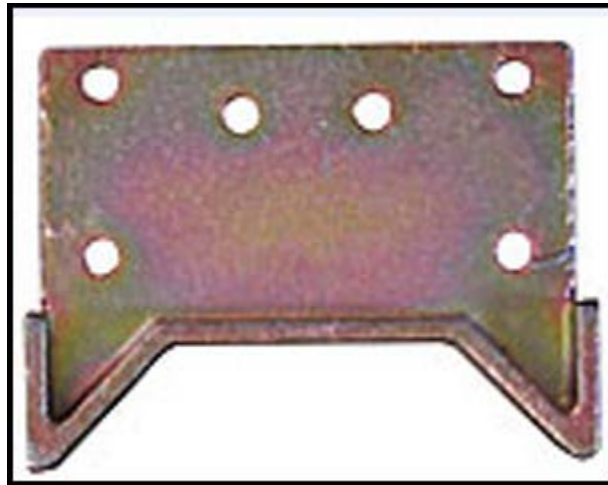
**Ladders Used For:**

**Description:**

Replacement spikes for TWL, TRL 26' and 28', TEL, and TEL3

**Questions to ask:**

None



**END CAP-1-R**

**Ladders Used For:**

**Description:**

Replacement round end cap for TWL, TRL, and the *Fly Section* of TEL and TEL3, 3 ¾" high side rail

**Questions to ask:**

None



**END CAP-2-R**

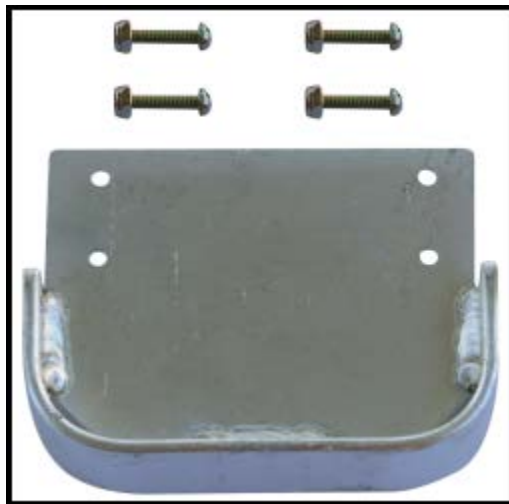
**Ladders Used For:**

**Description:**

Replacement round end cap 26', 28' TWL, TRL and TEL3 *Nest Section*

**Questions to ask:**

None



## END CAP-3-R

### Ladders Used For:

### Description:

Replacement end cap for top left of TEL base section and top left of TEL# *Nest Section* and base section, 5 7/16" high side rail

### Questions to ask:

None



**END CAP-4-R**

**Ladders Used For:**

**Description:**

Replacement end cap for top right side of TEL base section and top right of TEL3 *Nest Section* and base section

**Questions to ask:**

None



## **GUSSET-1**

### **Ladders Used For:**

Truss type ladders

### **Description:**

Replacement gusset

### **Questions to ask:**

None



## GUSSET-2

### Ladders Used For:

Truss type ladders

### Description:

Replacement gusset

### Questions to ask:

None





### **GUSSET-3**

#### **Ladders Used For:**

Truss type ladders

#### **Description:**

Replacement gusset

#### **Questions to ask:**

None



## H.D. LOCK-CH-R

### Ladders Used For:

TEL & TEL-3

### Description:

3 9/16" wide channel for H.D. (Heavy Duty) Locks with (4) screws for assembly

### Questions to ask:

1. What is the serial number?
2. What section is this needed for (the *Fly Section* or the *Nest Section*)?



## H.D. LOCK-CH-R1

### Ladders Used For:

TEL & TEL-3

### Description:

3 3/8" wing channel

### Questions to ask:

1. What is the serial number?
2. What section is this needed for (the *Fly Section* or the *Nest Section*)?



## H.D. LOCK-CH-R2

### Ladders Used For:

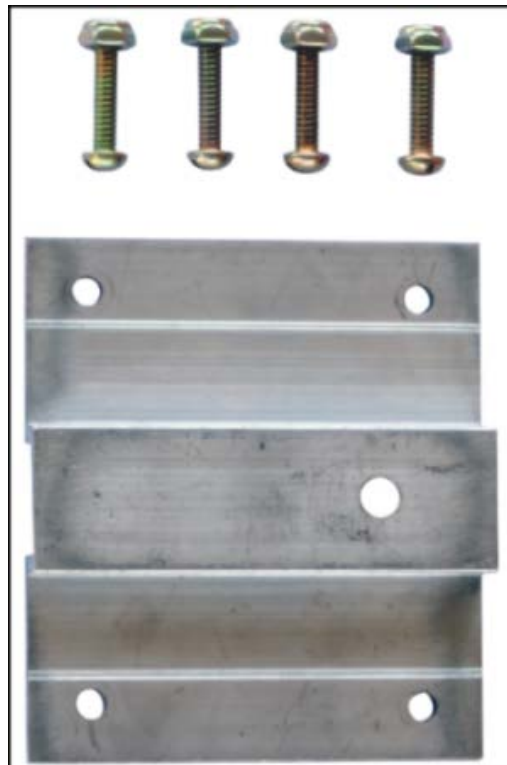
TEL & TEL-3

### Description:

5" wing channel

### Questions to ask:

1. What is the serial number?
2. What section is this needed for (the *Fly Section* or the *Nest Section*)?



## H.D. LOCK-CH-R4

### Ladders Used For:

TEL & TEL-3

### Description:

5" wing channel

### Questions to ask:

1. What is the serial number?
2. What section is this needed for (the *Fly Section* or the *Nest Section*)?



## H.D. LOCKS-R

### Ladders Used For:

FEL-12 thru FEL-40

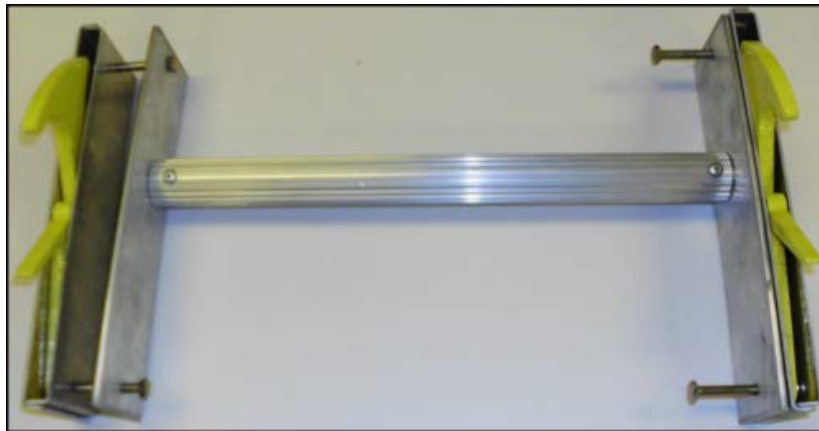
FEL3-24 thru FEL3-40

### Description:

Heavy duty locks with rung

### Questions to ask:

1. What style ladder is this going on (pumper or truss)?
2. Is this a (2) section or (3) section ladder?
3. Is this for the *Fly Section* or the *Nest Section*?
4. What is the serial number?
5. Does this need to be assembled?



## MONO BOLT

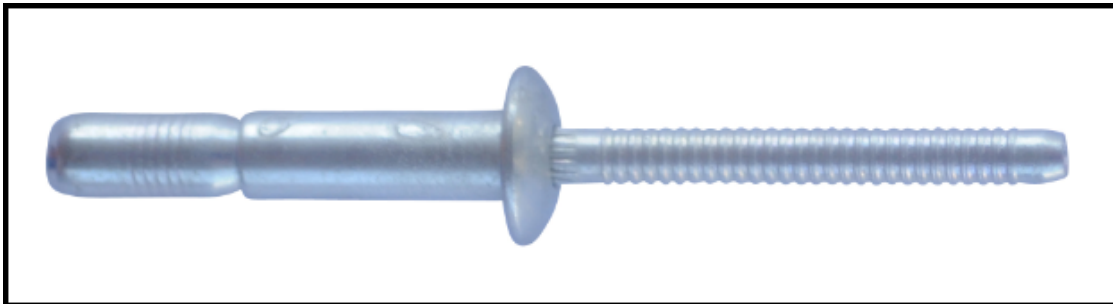
### Ladders Used For:

### Description:

3/16" mono bolt

### Questions to ask:

None



## MUD-GUARD

### Ladders Used For:

### Description:

Bottom of base section to prevent ladder from sinking in the mud.

### Questions to ask:

1. What is the serial number?
2. What is the type of ladder (pumper or truss)?





## **PULLEY-1-R**

### **Ladders Used For:**

PEL-12 thru PEL-24                      PEL6-16 thru PEL3-19

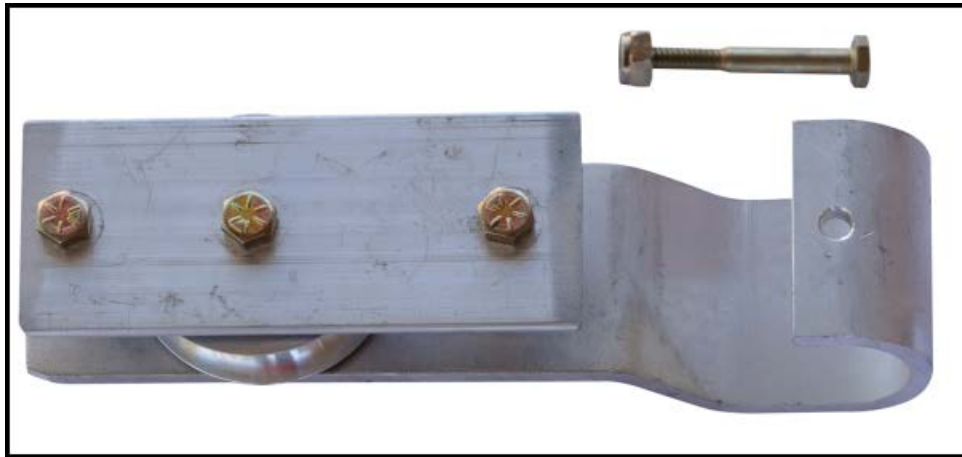
TEL-14 thru TEL-24                      TEL3-24 thru TEL3-40

FEL-12 thru FEL-24                      FEL3-24 thru FEL3-40

**Description:** Single straight pulley for a two (2) section ladder

### **Questions to ask:**

1. What is the serial number?



## **PULLEY-3-R**

### **Ladders Used For:**

PEL-28 thru PEL-35                      PEL3-24 thru PEL3-40

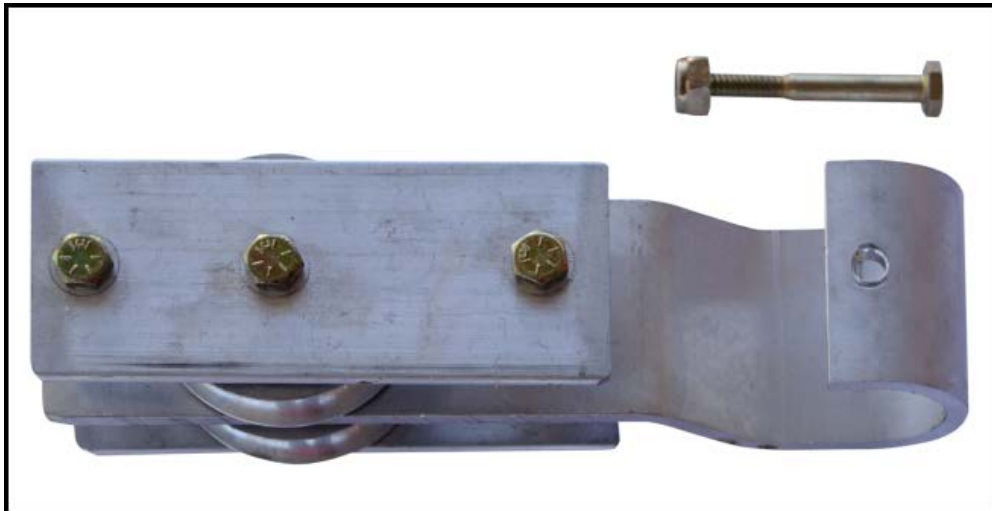
TEL-28 thru TEL-40                      TEL3-24 thru TEL3-40

FEL-28 thru FEL-40                      FEL3-24 thru FEL3-40

**Description:** Double straight pulley for a three (3) section ladder

### **Questions to ask:**

1. What is the serial number?



**REN-CH-R-1**

**Ladders Used For:**

FRL FEL FEL-3

**Description:**

Reinforcement channel for Roof Hooks and bottom spikes 6 ¼” long

**Questions to ask:**

None



## ROOF-HOOKS-R

### Ladders Used For:

### Description:

Set of roof hooks with spreader bar Questions

### to ask:

1. What is the serial number?
2. What is the type of ladder (pumper or truss)?



**ROPE-NM-1**

**Ladders Used For:**

**Description:**

½" dia. (diameter) non-manila rope, 600' feet coil, ships via Class 150, Weight: 32lbs (Halyard)

**Questions to ask:**

None



## ROPE-NM-1-R

### Ladders Used For:

### Description:

½” dia. (diameter) non-manila rope, cut to size; For 600’-0” Coil

### Questions to ask:

1. What is the serial number?
2. What is the size of the ladder?



**RUNG-BRC-1-R**

**Ladders Used For:**

**Description:**

Grey Brothers rung brace for ladders (plated)

**Questions to ask:**

None



## RUNG-BRC-2-R

### Ladders Used For:

### Description:

Replacement bottom rung brace for (3) section pumper ladders, bottom rung brace for (2) section truss ladders, measures 3/8" x 3/4" x 8 3/4"

### Questions to ask:

None





## RUNG-BRC-3-R

### Ladders Used For:

### Description:

Replacement bottom rung brace for TEL3 bottom rung, measures 3/8" x 3/4" x 10 5/16"

### Questions to ask:

None



## RUNG-WEAR-R

### Ladders Used For:

Description: Rung wear sleeve Questions

### to ask:

None



## RUNGS

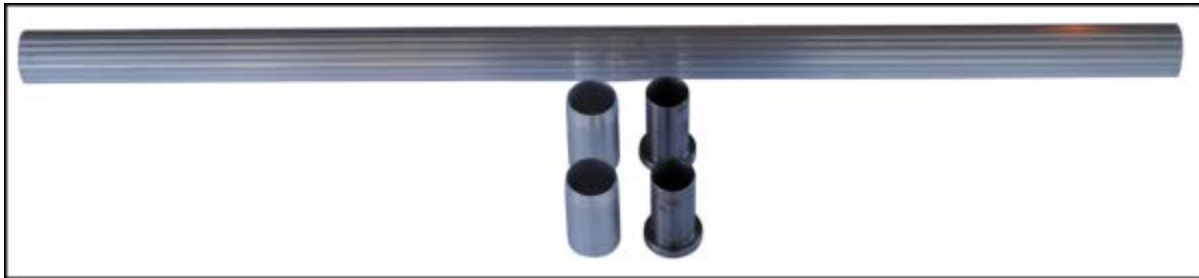
### Ladders Used For:

### Description:

1 ¼"OD x 26" long rung with bushings, includes (2) spanner bushings

### Questions to ask:

1. What is the type of ladder (pumper or truss)?
2. If it is a truss type ladder, what is the section that this will be installed in (*Butt, Nest Section or Fly Section*)?



**SPRED-BAR-R**

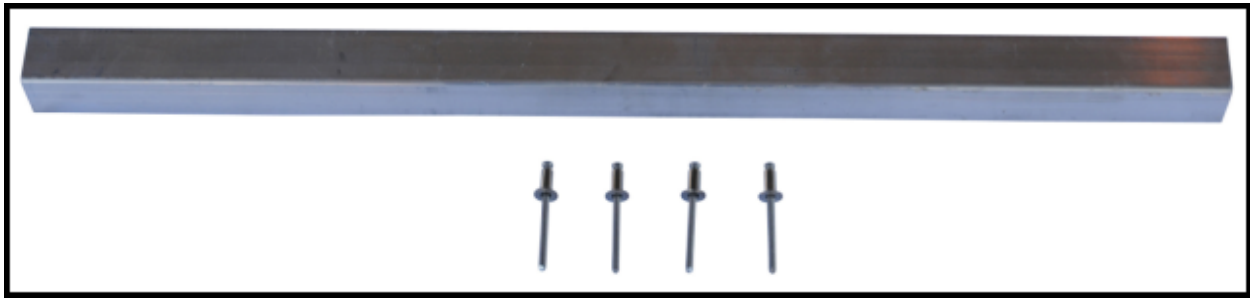
**Ladders Used For:**

**Description:**

Spreader bar for roof hooks, measures 18” long, 1” square x 1/8” wall tubing

**Questions to ask:**

None



## STAYPOLE-2-R

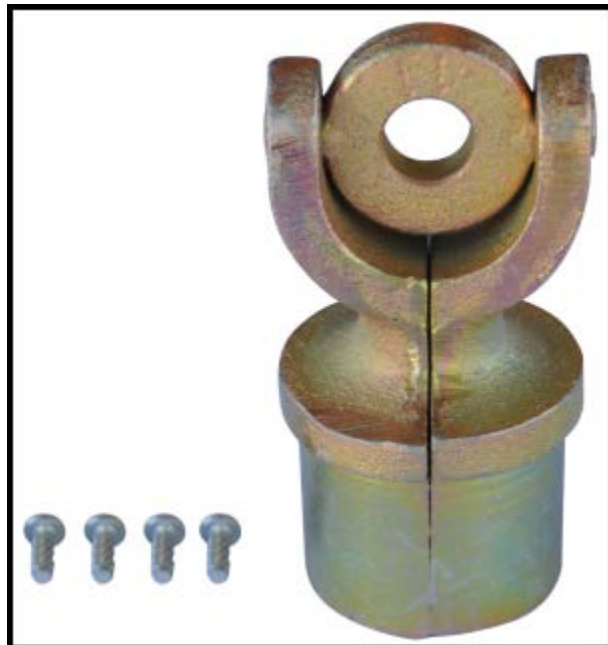
### Ladders Used For:

For Truss and Pumper ladders Description:

Staypole top

### Questions to ask:

None



## STAYPOLE-5-R

### Ladders Used For:

For Truss and Pumper ladders Description:

Staypole stud

### Questions to ask:

None



## STAYPOLE-6-R

### Ladders Used For:

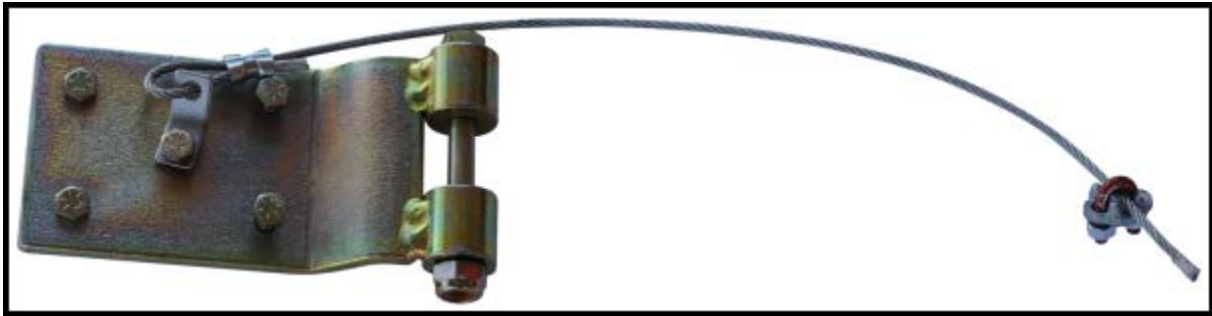
For Truss ladders

### Description:

Staypole hinge with safety cable Questions

### to ask:

None



## STAYPOLE-7-R

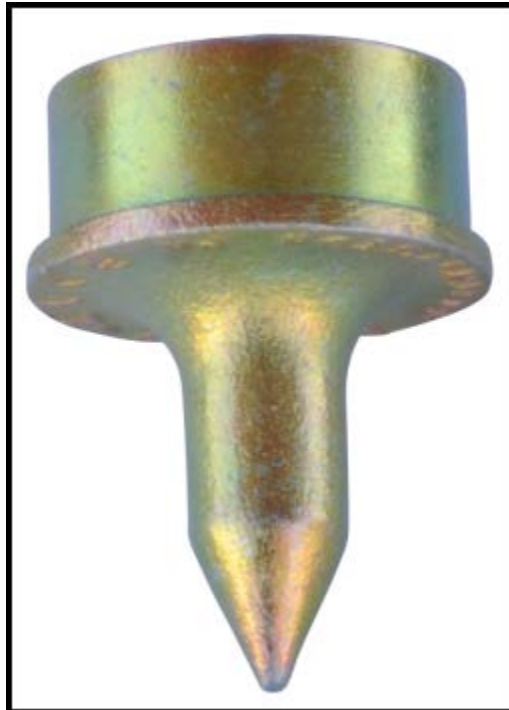
### Ladders Used For:

For Truss and Pumper ladders **Description:**

Staypole bottom

### Questions to ask:

None





## **STAYPOLE-9-R**

### **Ladders Used For:**

### **Description:**

Staypole hinge arm, (2) required, pumper style ladders only

### **Questions to ask:**

None



## STAYPOLE-17-R

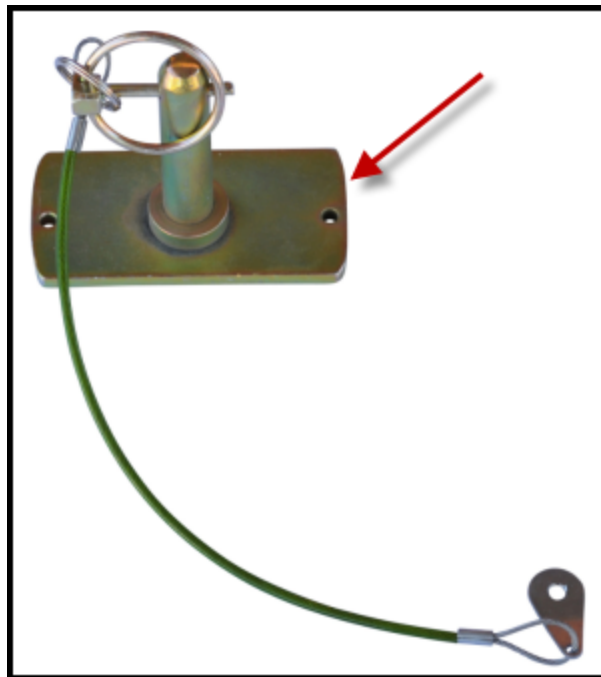
### Ladders Used For:

### Description:

Staypole mounting bracket (for truss ladders only)

### Questions to ask:

None



**STAYPOLE18-R**

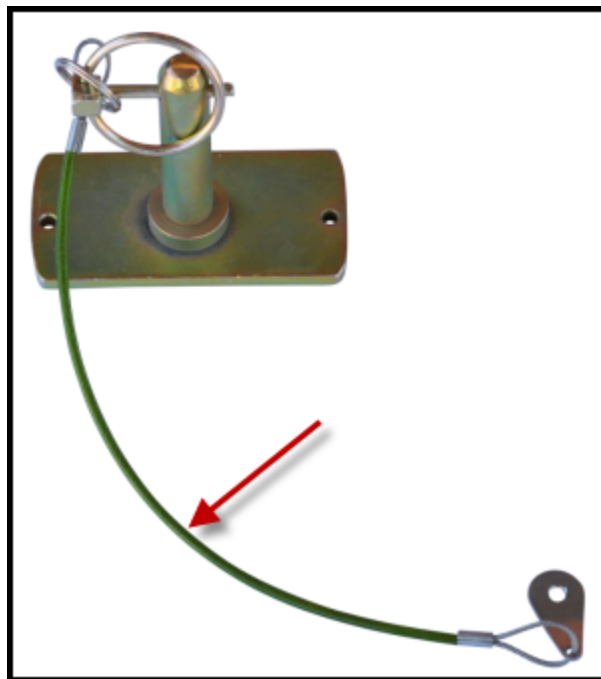
**Ladders Used For:**

**Description:**

Lanyard (for truss ladders only)

**Questions to ask:**

None



**STAYPOLE-19-R**

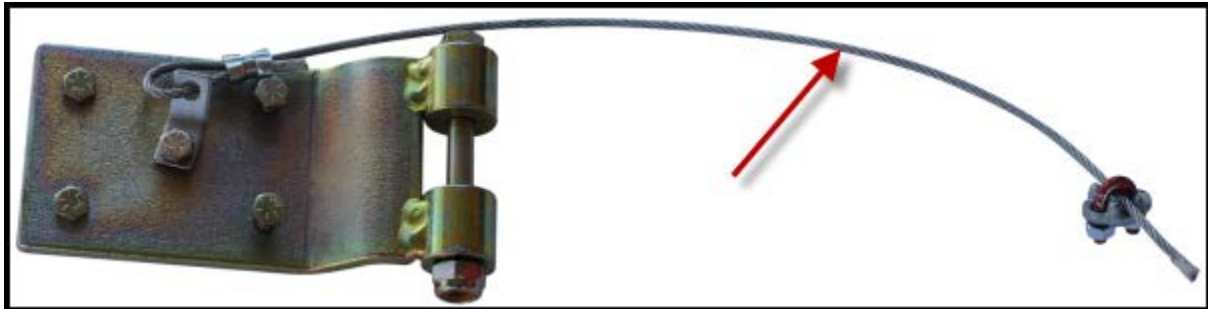
**Ladders Used For:**

For Truss type ladders ONLY **Description:**

Safety Cable

**Questions to ask:**

None



**STOP-3-R**

**Ladders Used For:**

**Description:**

Stop for truss ladder

**Questions to ask:**

None



## Fiberglass Ladders

### CABLE-1-R

#### Ladders Used For:

FEL3-24 thru FEL3-40

#### Description:

3/16" aircraft cable, cut to size

#### Questions to ask:

1. What is the serial number?



**CABLE-CL-1-R**

**Ladders Used For:**

FEL3-24 thru FEL3-40

**Description:**

3/16" cable clamps, (4) clamps required per

cable **Questions to ask:**

None



**CABLE-CL-2-R**

**Ladders Used For:**

FEL3-24 thru FEL-40

**Description:**

3/16" crimping clamps, must have a crimping tool to use crimps (for city of Chicago)

**Questions to ask:**

None





**CABLE-RG-R**

**Ladders Used For:**

FEL-28 thru FEL-40

FEL3-24 thru FEL3-40

**Description:**

Cable ring and rung band for bottom rung

**Questions to ask:**

None



**CABLE-RG-R1**

**Ladders Used For:**

FEL3-24 thru FEL3-40

**Description:**

Double cable ring and rung band for three section ladder, cable, and rope

**Questions to ask:**

None



**CASTING-8-R**

**Ladders Used For:**

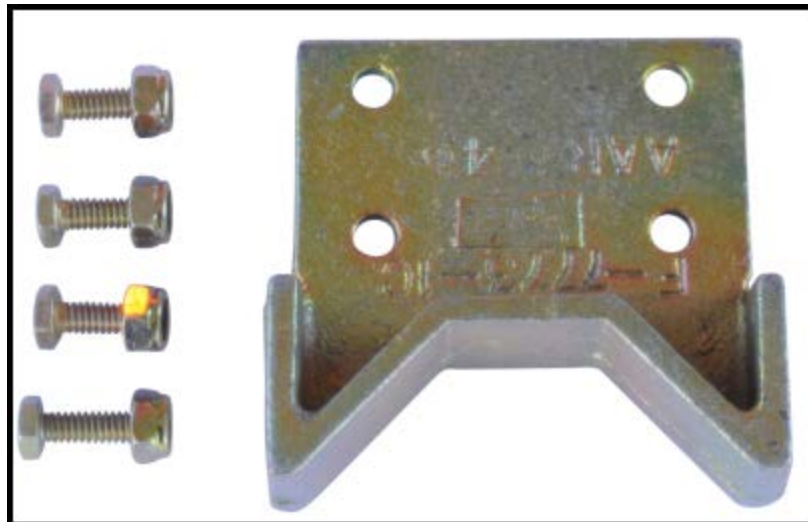
FRL FEL FEL-3

**Description:**

Bottom spike or butt spur for a TRL & TWL

**Questions to ask:**

None



**DLLH-GUS-R**

**Ladders Used For:**

FRL FEL FEL-3

**Description:**

3" x 3 1/2" gusset plate for JL ladder

**Questions to ask:**

None



**END CAP-1-R**

**Ladders Used For:**

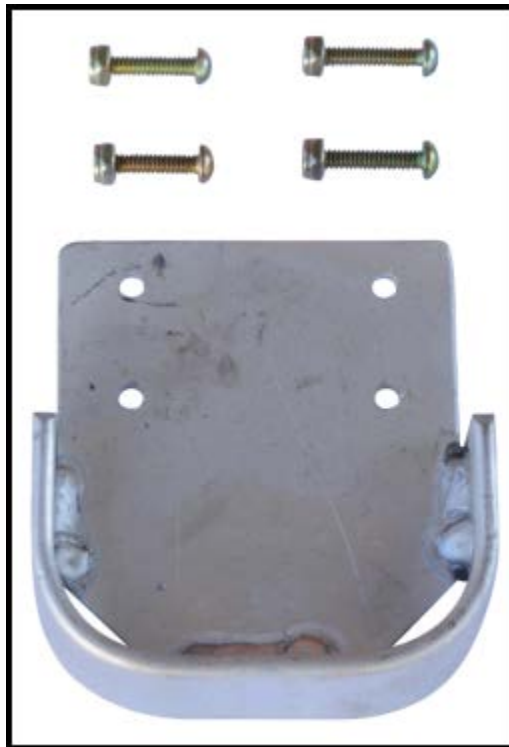
FRL FEL FEL-3

**Description:**

Replacement round end cap for TWL, TRL, and the *Fly Section* of TEL and TEL3, 3 ¾” high side rail

**Questions to ask:**

None



**FEL-BRK-1-R**

**Ladders Used For:**

FEL-12 thru FEL-24

FEL-28 thru FEL-40

FEL3-24 thru FEL3-40

**Description:**

5" guide bracket

**Questions to ask:**

1. What is the serial number?



**FEL-BRK-2-R**

**Ladders Used For:**

FEL-12 thru FEL-24

FEL-28 thru FEL-40

FEL3-24 thru FEL3-40

**Description:**

10” guide bracket

**Questions to ask:**

1. What is the serial number?



## H.D. LOCKS-R

### Ladders Used For:

FEL-12 thru FEL-40

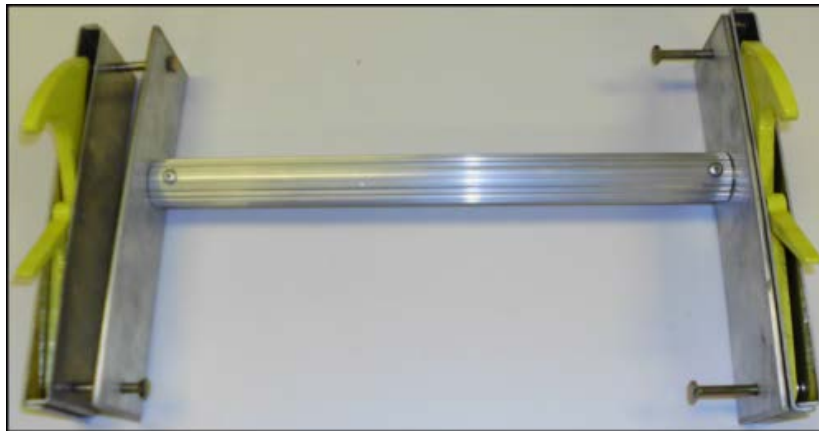
FEL3-24 thru FEL3-40

### Description:

Heavy duty locks with rung

### Questions to ask:

6. What style ladder is this going on (pumper or truss)?
7. Is this a (2) section or (3) section ladder?
8. Is this for the *Fly Section* or the *Nest Section*?
9. What is the serial number?
10. Does this need to be assembled?





## H.D. LOCKS-CH-R4

### Ladders Used For:

FEL            FEL3

### Description:

Wing channel 3 1/8" long

### Questions to ask:

None



## **PULLEY-1-R**

### **Ladders Used For:**

FEL-12 thru FEL-24

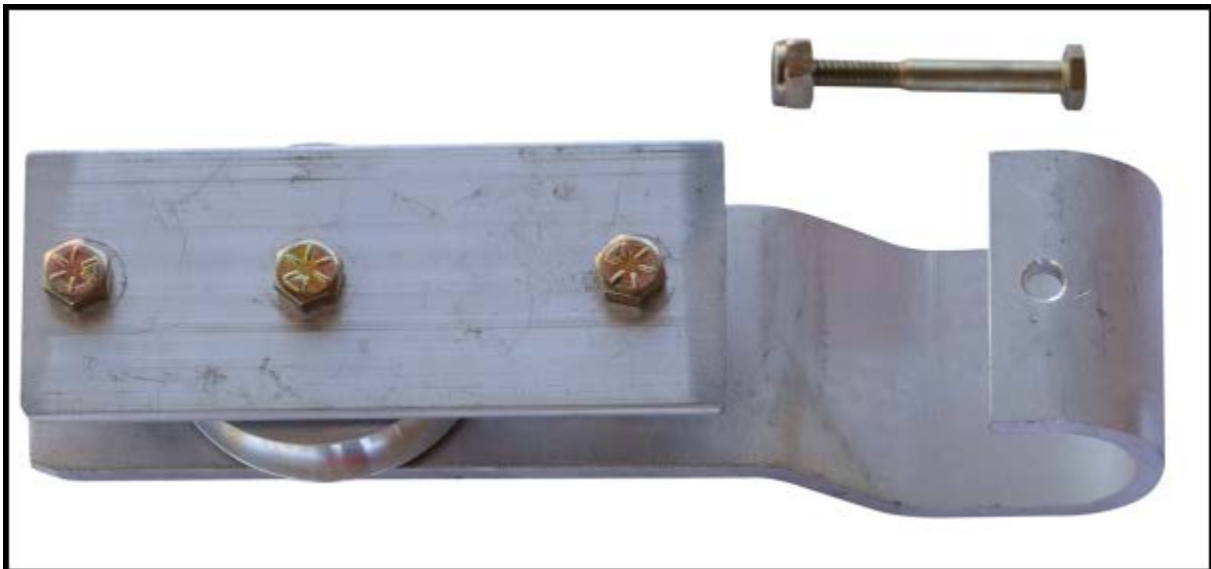
FEL3-24 thru FEL3-40

### **Description:**

Single straight pulley for a two (2) section ladder

### **Questions to ask:**

None



## **PULLEY-3-R**

### **Ladders Used For:**

PEL-28 thru PEL-35                      PEL3-28 thru PEL3-40

TEL-28 thru TEL-40                      TEL3-24 thru TEL3-40

FEL-28 thru FEL-40                      FEL3-24 thru FEL3-40

### **Description:**

Double straight pulley for a three (3) section ladder

### **Questions to ask:**

1. What is the serial number?



**REN-CH-R-1**

**Ladders Used For:**

FRL FEL FEL-3

**Description:**

Reinforcement channel for Roof Hooks and bottom spikes 6 ¼” long

**Questions to ask:**

None



## ROOF-HOOKS-R

### Ladders Used For:

### Description:

Set of roof hooks with spreader bar Questions

### to ask:

1. What is the serial number?
2. What is the type of ladder (pumper or truss)?



**ROPE-NM-1**

**Ladders Used For:**

**Description:**

½" dia. (diameter) non-manila rope, 600' feet coil, ships via Class 150, Weight: 32lbs (Halyard)

**Questions to ask:**

None



## ROPE-NM-1-R

### Ladders Used For:

### Description:

½” dia. (diameter) non-manila rope, cut to size

### Questions to ask:

1. What is the serial number?
2. What is the size of the ladder?



## **RUNG-BRC-1-R**

### **Ladders Used For:**

FRL FEL FEL-3

### **Description:**

Grey Brothers rung brace for ladders (plated)

### **Questions to ask:**

None





**RUNG-BUSH-R**

**Ladders Used For:**

**Description:**

Replacement 1.15" O.D x 2" bushing

**Questions to ask:**

None



## RUNGS

### Ladders Used For:

FRL FEL FEL-3

### Description:

1 ¼"OD x 26" long rung with bushings, includes (2) spanner bushings

### Questions to ask:

1. What style ladder is this going on (pumper or truss)?
2. If this is the truss style ladder, what section will this be installed at (*Butt, Nest Section, or Fly Section*)?



## **RUNG-WEAR-R**

### **Ladders Used For:**

### **Description:**

Rung wear sleeve

### **Questions to ask:**

None



## SPRED-BAR-R

### Ladders Used For:

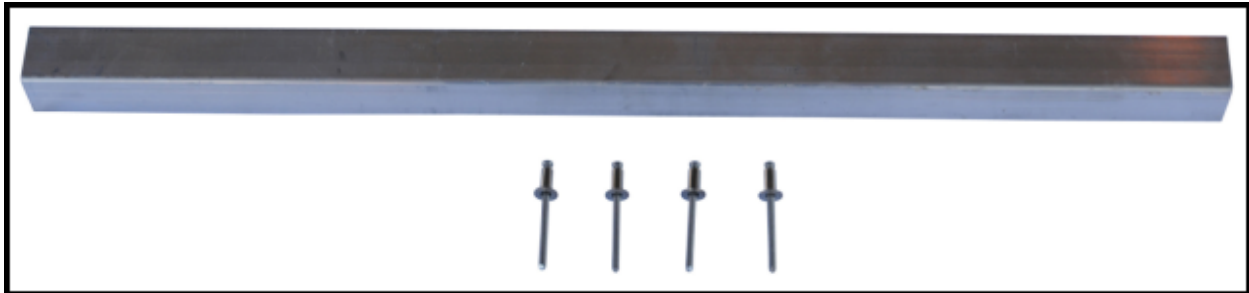
FRL

### Description:

Spreader bar for roof hooks, measures 18” long, 1” square x 1/8” wall tubing

### Questions to ask:

None



## Folding Ladder Parts

### CASTING-10-R

#### Ladders Used For:

#### Description:

Replacement end caps

#### Questions to ask:

None



**FL-HANDLE-R**

**Ladders Used For:**

**Description:** Replacement handle

**Questions to ask:**

None



**FL-HINGE-R**

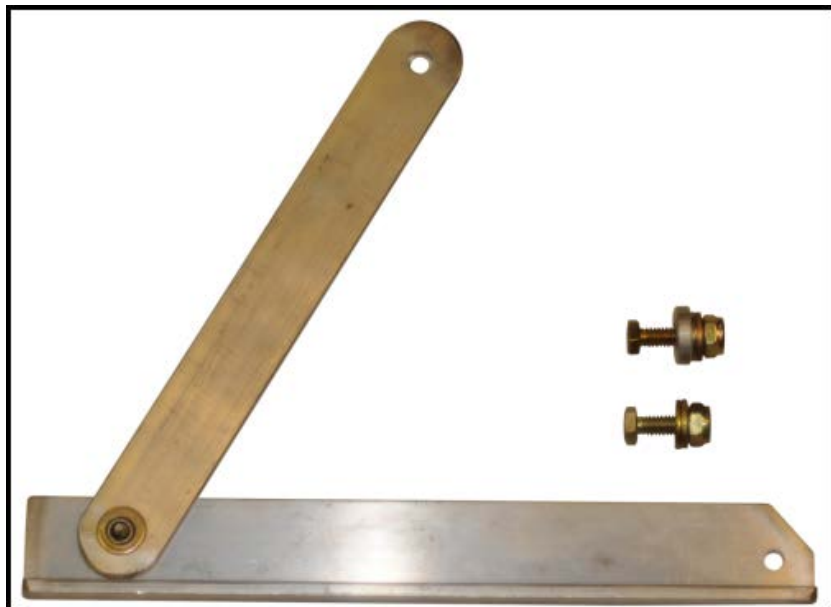
**Ladders Used For:**

**Description:**

Folding ladder hinge

**Questions to ask:**

None



**FL-P-BRK-T**

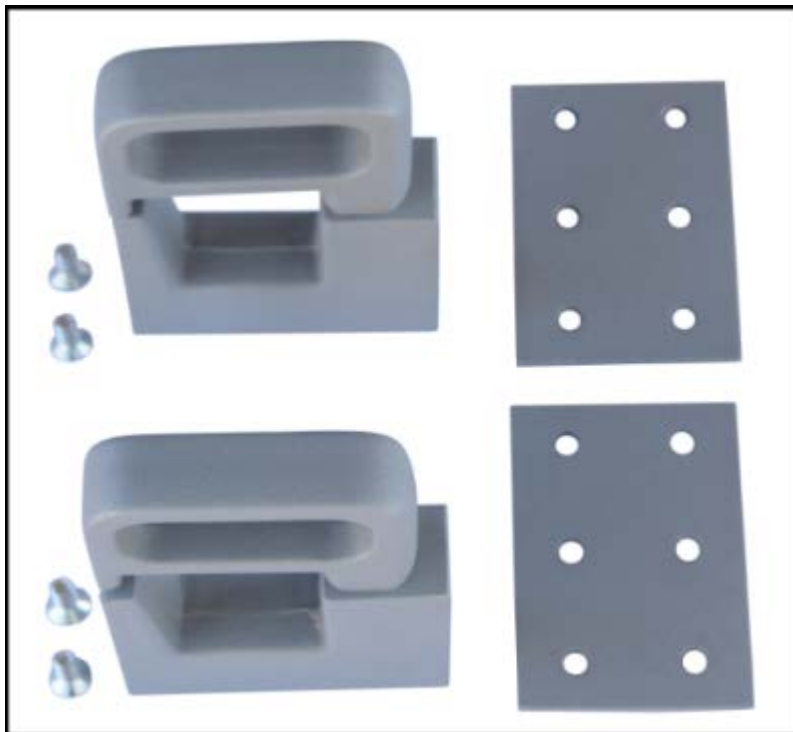
**Ladders Used For:**

**Description:**

Folding ladder painted brackets

**Questions to ask:**

None





**FL-RIVET-R**

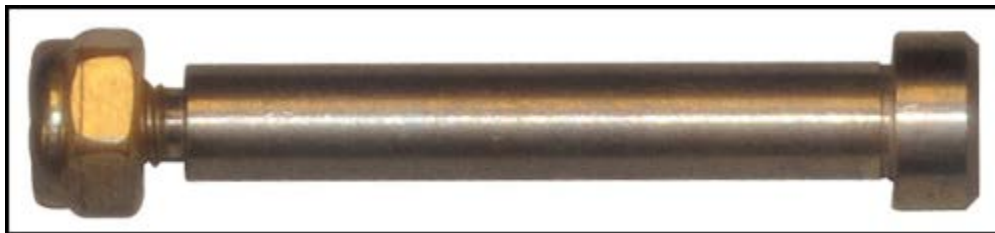
**Ladders Used For:**

**Description:**

Replacement rung rivet

**Questions to ask:**

None



## FL-RUNG-R

### Ladders Used For:

### Description:

Replacement rung

### Questions to ask:

1. Is this for a bottom rung? (You must know if this is for a bottom rung in order to receive correct rung as these are cut so we do not interfere with bracket.)



**SAF-SH-TONGUE-R1**

**Ladders Used For:**

**Description:**

Bracket that holds swivel shoe (FL only), measures 1 ½” long

**Questions to ask:**

None



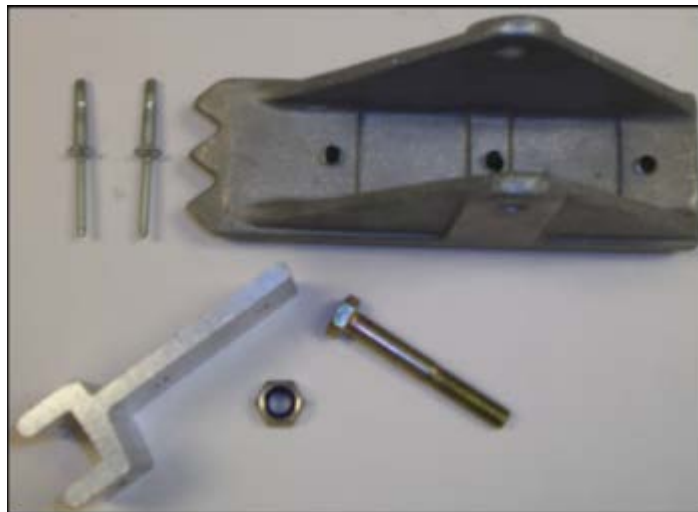
**SAF-SHOE-1-R**

**Ladders Used For:**

**Description:**

Replacement shoe

**Questions to ask:**



## Attic Extension Ladder Parts

### CASTING-1-R

#### Ladders Used For:

PRL-08 thru PRL-20

PEL-12 thru PEL-24

AEL-10 thru AEL-14

PEL3-16

PEL3-19

PEL3-24

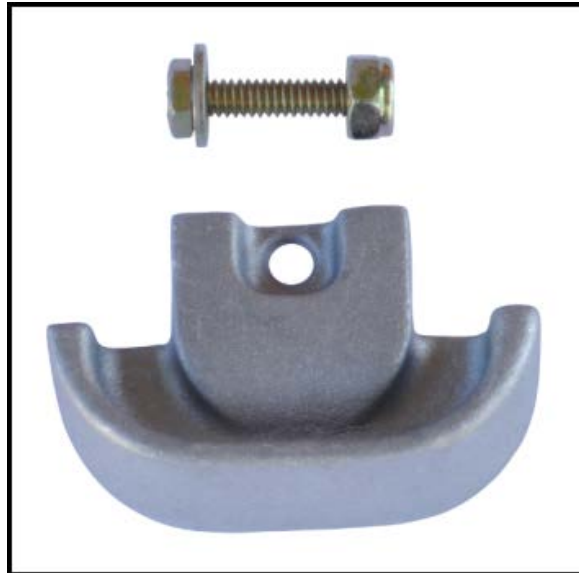
BL-04

#### Description:

Rounded end cap for pumper ladder with 2 7/8" high side rail

#### Questions to ask:

1. What is the serial number?
2. What is the type of ladder?
3. What is the size of the side rail?



## CASTING-6-R

### Ladders Used For:

PRL-08 thru PRL-20

PEL-12 thru

PEL-24 PRL3-16

PEL3-19

AEL-10 thru AEL-14

PEL3-24

### Description:

Bottom spike or butt spur for pumper ladders with 2 7/8" high side rail

### Questions to ask:

1. What is the serial number?
2. What is the type of ladder?
3. What is the size of the side rail?



## H.D. LOCKS-R

### Ladders Used For:

### Description:

Heavy duty locks with rung

### Questions to ask:

11. What style ladder is this going on (pumper or truss)?
12. Is this a (2) section or (3) section ladder?
13. Is this for the *Fly Section* or the *Nest Section*?
14. What is the serial number?
15. Does this need to be assembled?



## PEL-24-BRK-R

### Ladders Used For:

PEL-12 thru PEL-24

PEL3-16 thru PEL3-19

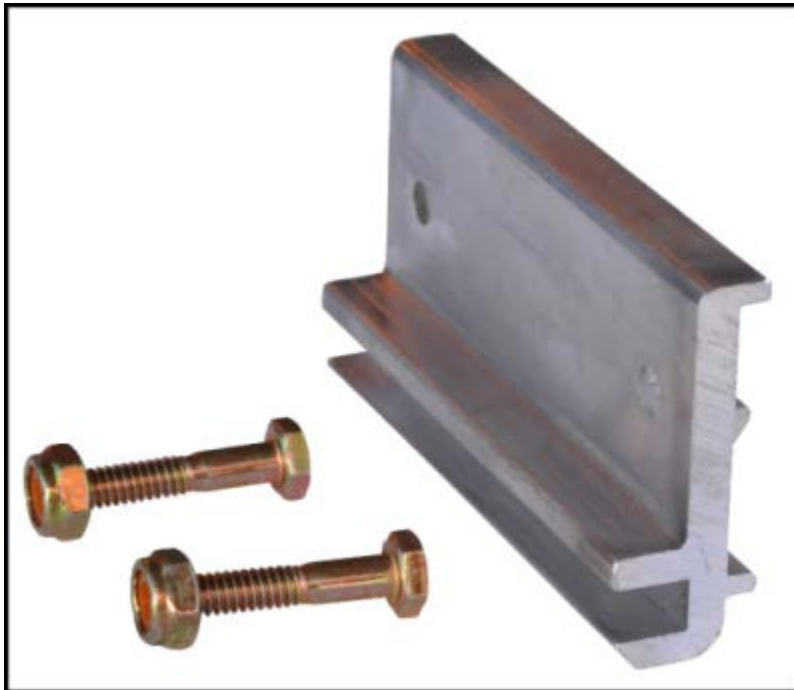
AEL-10 thru AEL-14

### Description:

4" guide bracket for PEL-24 and below, light duty

### Questions to ask:

1. What is the serial number?





**RUNG-BRC-1-R**

**Ladders Used For:**

**Description:**

Grey Brothers rung brace for ladders (plated)

**Questions to ask:**

None



**RUNG-BUSH-R**

**Ladders Used For:**

**Description:**

Replacement 1.15" O.D x 2" bushing

**Questions to ask:**

None



## RUNGS

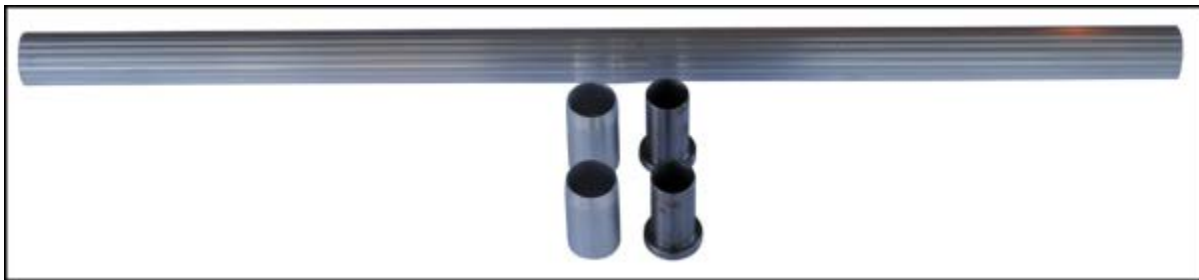
### Ladders Used For:

### Description:

1 ¼"OD x 26" long rung with bushings, includes (2) spanner bushings

### Questions to ask:

1. What style ladder is this going on (pumper or truss)?
2. If this is the truss style ladder, what section will this be installed at (*Butt, Nest Section, or Fly Section*)?



**SAF-SHOE-3-R**

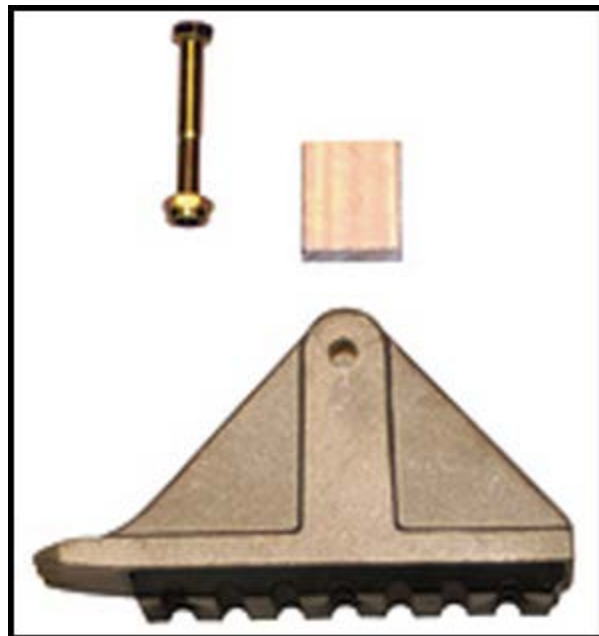
**Ladders Used For:**

**Description:**

Safety shoe for light duty pumper, for 2 7/8" side rail

**Questions to ask:**

None



**SPRING-HDL-R**

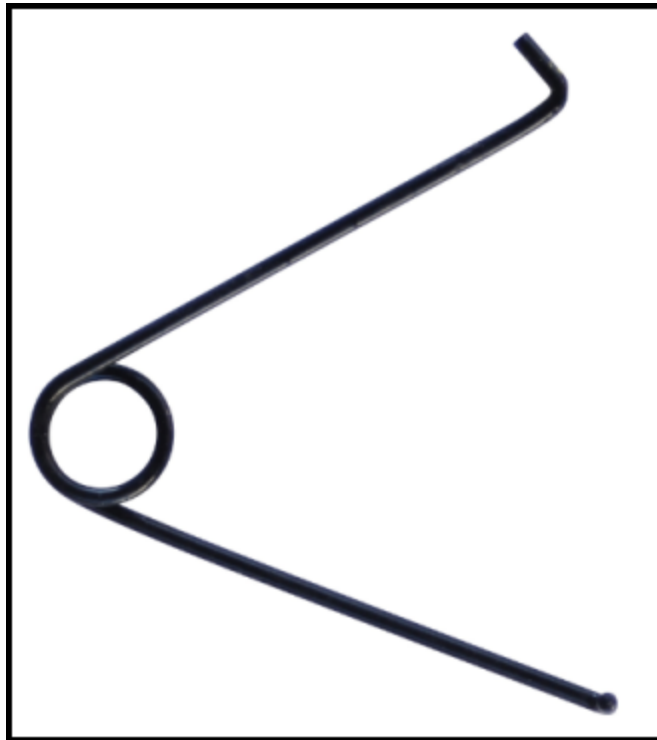
**Ladders Used For:**

**Description:**

Heavy duty lock spring

**Questions to ask:**

None



**STOP-1-R**

**Ladders Used For:**

PEL12 thru PEL-24

PEL3-16

AEL-10

AEL-14

PEL3-19

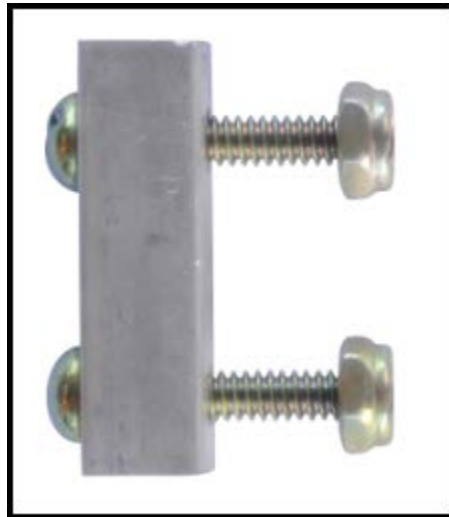
PEL3-24

**Description:**

Stop for pumper ladder with 2 7/8" high side rail

**Questions to ask:**

1. What is the serial number?



## Combination Ladders

### BRK070L-R

#### Ladders Used For:

#### Description:

Left side guide bracket for CJL type ladder

#### Questions to ask:

1. What is the serial number?



## BRK070R-R

### Ladders Used For:

### Description:

Right side guide bracket for CJL type ladder

### Questions to ask:

1. What is the serial number?





**CASTING-4-R**

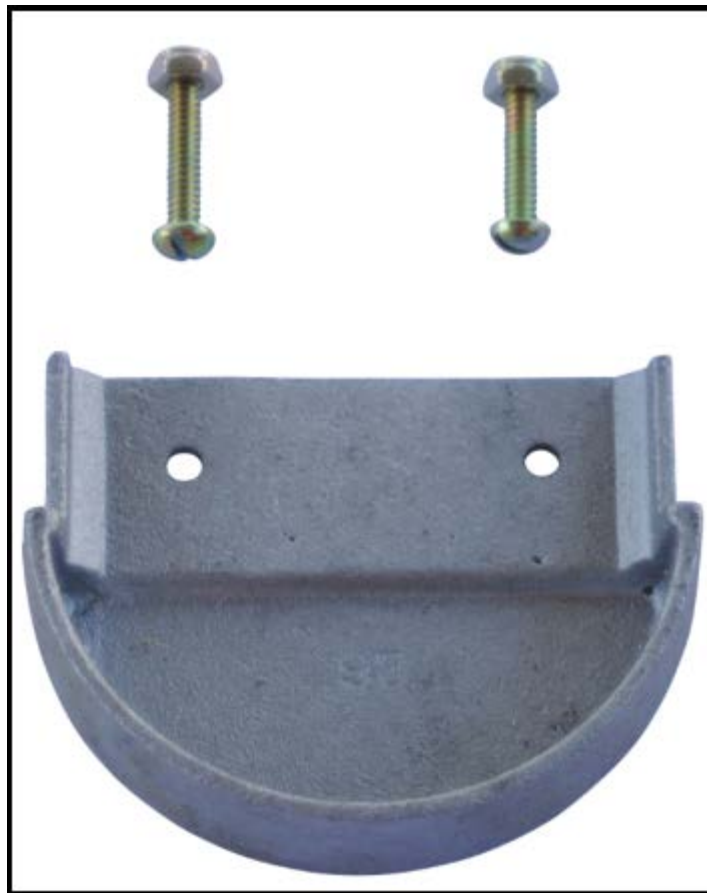
**Ladders Used For:**

**Description:**

Rounded end cap for CIL ladders, 3 ½” high side

rail **Questions to ask:**

None



**DLLH-GUS-R**

**Ladders Used For:**

CJL Ladders

**Description:**

3" x 3 1/2" gusset plate for JL ladder

**Questions to ask:**

None



## H.D. LOCKS-R

### Ladders Used For:

### Description:

Heavy duty locks with rung

### Questions to ask:

1. What style ladder is this going on (pumper or truss)?
2. Is this a (2) section or (3) section ladder?
3. Is this for the *Fly Section* or the *Nest Section*?
4. What is the serial number?
5. Does this need to be assembled?



**PLT-070-F-R**

**Ladders Used For:**

CJL Ladders

**Description:**

Replacement female plate

**Questions to ask:**

None



**PLT-070-M-R**

**Ladders Used For:**

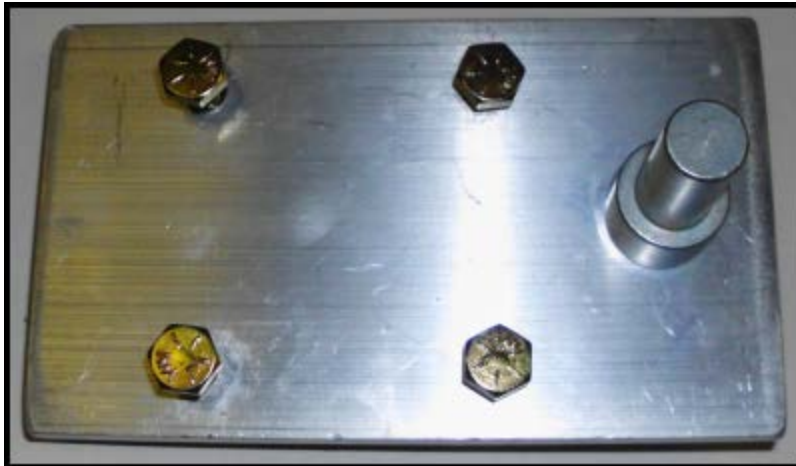
CJL Ladders

**Description:**

Replacement male plate

**Questions to ask:**

None



**RUNG-BUSH-R**

**Ladders Used For:**

**Description:**

Replacement 1.15" O.D. x 2" bushing

**Questions to ask:**

None



## RUNGS

### Ladders Used For:

### Description:

1 ¼"OD x 26" long rung with bushings, includes (2) spanner bushings

### Questions to ask:

1. What style ladder is this going on (pumper or truss)?
2. If this is a truss style ladder, what section will this be installed at (*Butt, Nest Section, or Fly Section*)?



**SAF-SHOE-2-R**

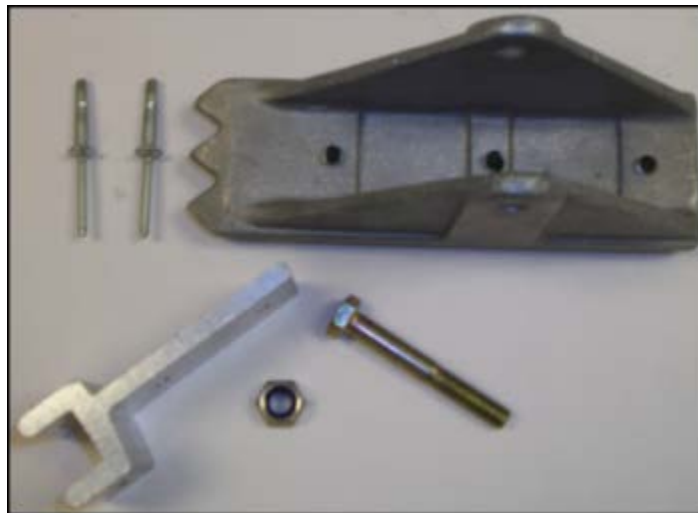
**Ladders Used For:**

**Description:**

Replacement shoe

**Questions to ask:**

None





## **SPRING-HDL-R**

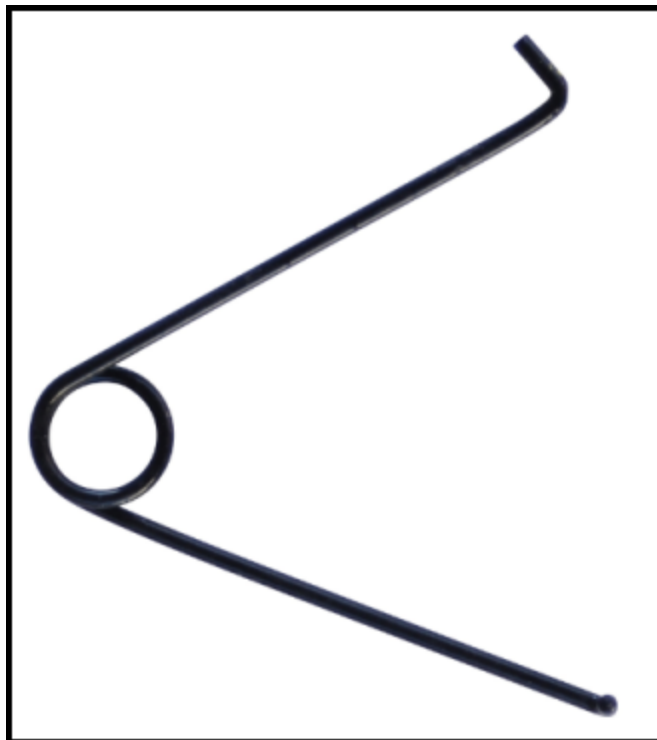
### **Ladders Used For:**

### **Description:**

Heavy duty lock spring

### **Questions to ask:**

None



**STOP-CJL-R**

**Ladders Used For:**

CJR Ladders

**Description:**

Stop

**Questions to ask:**

None



**STUD-3-R**

**Ladders Used For:**

**Description:**

Replacement CJL stud

**Questions to ask:**

None



## Boom Ladders

### CASTING-3-R

#### Ladders Used For:

#### Description:

Rounded end casting for boom ladder, 3 ¼" high side rail

#### Questions to ask:

1. What is the serial number?
2. What is the type of ladder?
3. What is the size of the side rail?

