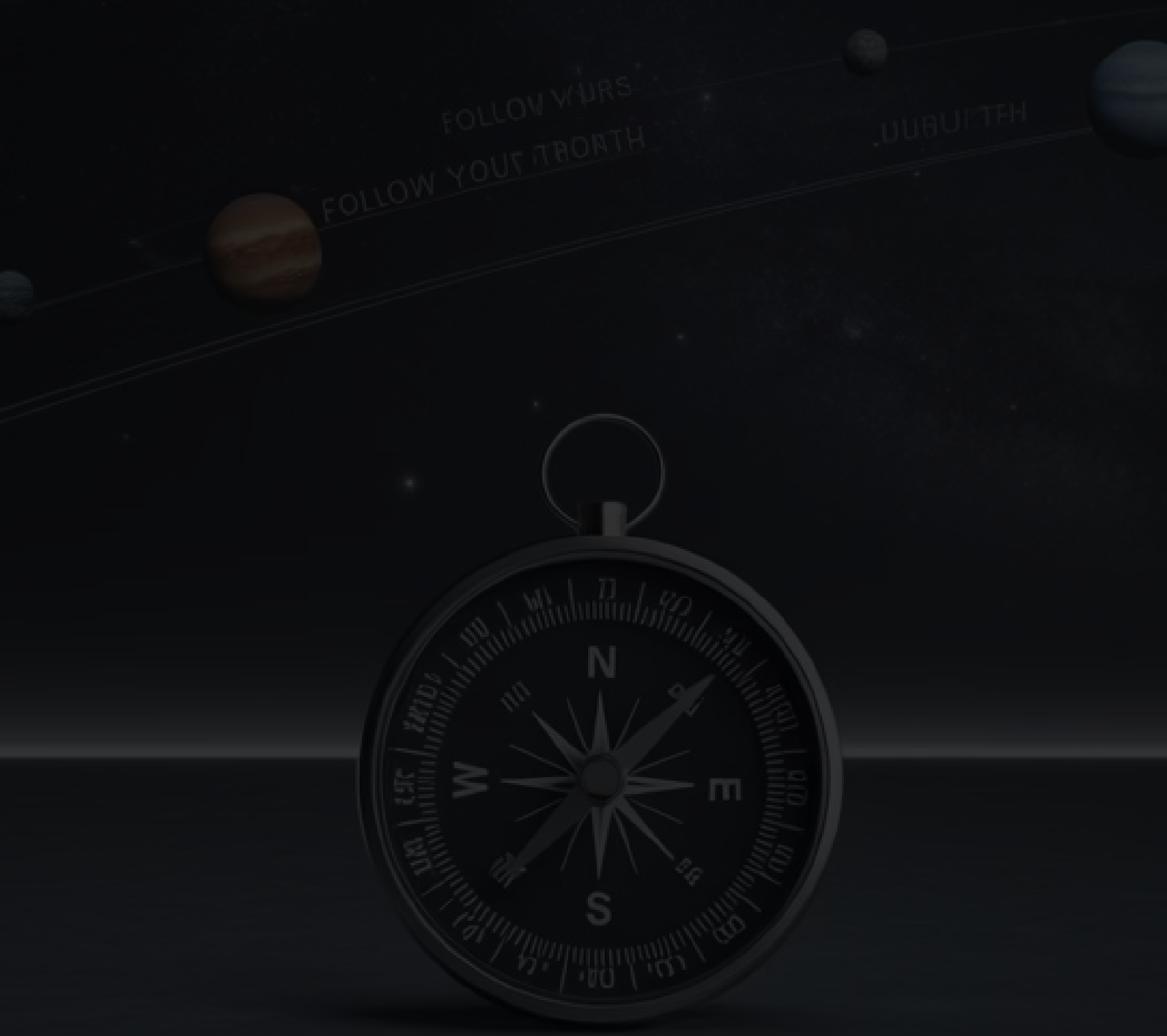


# Strategic Astro-Purpose Report: Kaustubh Savant's Life Blueprint

This comprehensive analysis maps Kaustubh Savant's astrological chart to reveal optimal career paths, personal strengths, and strategic opportunities across a five-year horizon. By examining the interplay between emotional core (Moon in Cancer), truth-seeking reality (Jupiter in Sagittarius), and service-oriented purpose (Sun in Virgo), this report offers actionable insights for aligning career choices with Kaustubh's unique cosmic blueprint and highest potential.



# Life Blueprint: Overview of Desire, Reality, and Purpose

The foundation of this analysis rests on three primary astrological drivers that shape Kaustubh's life journey. These planetary influences create a triangulation of forces that, when properly aligned, can guide decisions toward maximum fulfillment and impact.



The integration of these three forces creates what we might call "The Corrective Strategist" archetype - someone uniquely positioned to identify structural problems in systems, approach them with both analytical precision and emotional intelligence, and implement solutions that expand possibilities while maintaining high ethical standards.

# Understanding the Inner Desire

The Moon in Cancer represents Kaustubh's emotional foundation and subconscious patterning. This placement reveals deep psychological drivers that influence decision-making, relationships, and career satisfaction on an intuitive level that often operates below conscious awareness.

## Emotional DNA and Core Patterns

With Moon in Cancer, Kaustubh possesses a highly developed emotional intelligence and natural nurturing instinct. This creates a deep need for psychological alignment in all pursuits - work must "feel right" at an emotional level to be sustainable. This placement generates:

- Strong intuitive capacities that can read environments and people quickly
- A protective nature that thrives when helping others find safety and security
- Deep loyalty to those within the "inner circle" of trust
- Cyclical emotional patterns that require regular reflection and processing
- Natural counseling abilities that draw others to share their problems

The emotional security need manifests as a desire for work environments where trust is paramount and psychological safety is established. Without this foundation, productivity and engagement will significantly decrease regardless of other incentives.



## Recurring Life Themes

Cancer Moon individuals often experience certain patterns throughout life that reflect their emotional programming:

- Becoming the "emotional anchor" in personal and professional groups
- Navigating between periods of deep engagement and necessary withdrawal
- Finding themselves drawn into caretaking or advisory roles
- Experiencing heightened sensitivity to environmental and interpersonal dynamics
- Seeking connection to history, tradition, and meaningful continuity

### Primary Motivators

Kaustubh is fundamentally motivated by creating emotional significance and meaningful impact. Work that feels disconnected

### Fulfillment Triggers

Peak fulfillment occurs when helping others navigate emotional or systemic challenges, particularly when this

### Avoidance Patterns

Natural avoidance of cold, transactional environments where emotional intelligence is undervalued. May withdraw energy when

# Mapping the Reality

Jupiter in Sagittarius forms Kaustubh's reality framework - the lens through which opportunities manifest and expand in the material world. This powerful placement creates natural pathways for growth through truth-seeking, educational pursuits, and philosophical exploration.

## Karmic Conditions and Real-World Setup

Jupiter, as the planet of expansion and opportunity, creates the tangible conditions through which Kaustubh can most easily manifest success. In Sagittarius, its home sign, this creates exceptionally favorable conditions for:

- Learning and teaching roles with substantial freedom of movement
- Positions requiring ethical clarity and principled leadership
- Work involving cross-cultural understanding or international elements
- Projects demanding big-picture thinking and strategic foresight
- Roles that allow for honest expression and authentic communication

### Current Window (2024-2025)

Prime opportunity for reputation building and knowledge monetization. The present cycle supports structured learning and teaching, especially in domains that bridge theoretical understanding with practical application.

### Long-Term Window (2029-2031)

Consolidation phase for building lasting impact through institutional change or system design. This period supports translating experience into structural improvements with long-term societal benefits.



### Mid-Term Window (2026-2028)

Significant expansion potential through global connections or independent leadership positions. This period favors bold moves that leverage accumulated wisdom and ethical frameworks into leadership or thought authority.

## Strengths, Limitations, and Opportunity Windows

### Core Strengths:

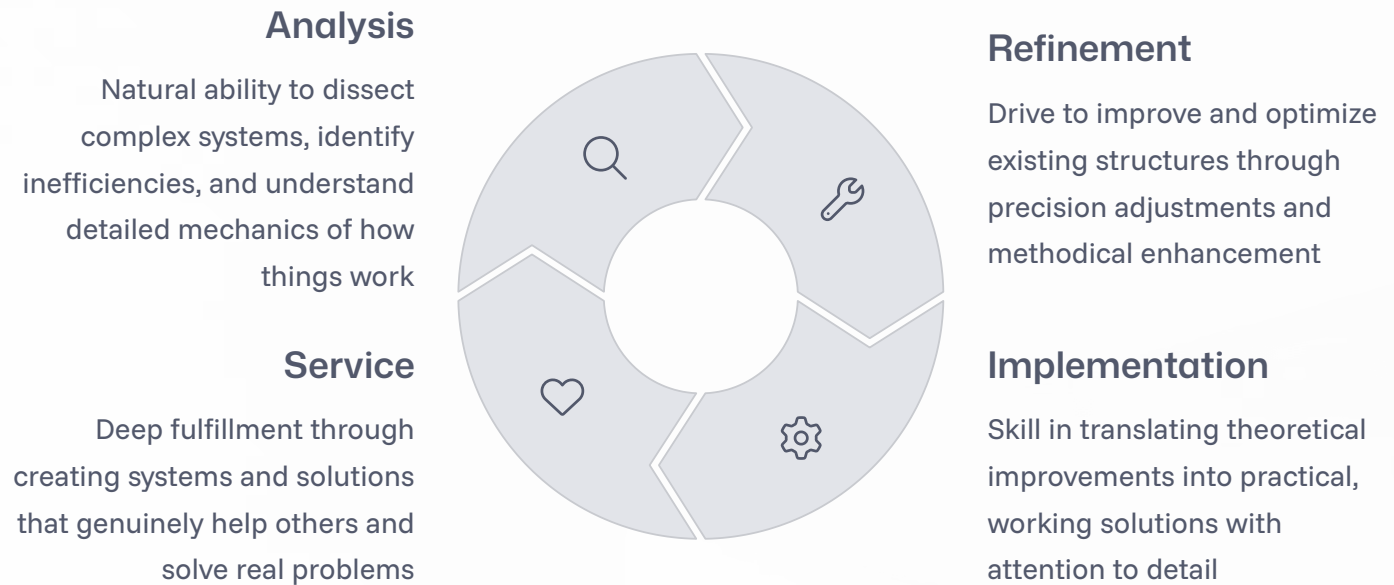
- Philosophical depth and ethical clarity
- Adaptability across diverse domains
- Natural teaching and mentoring abilities

### Potential Limitations:

- Tendency toward idealism without pragmatic grounding
- Risk of scattered focus when pursuing too

# Defining the Higher Purpose

The Sun in Virgo establishes Kaustubh's core identity and conscious purpose in this lifetime. This earthy, Mercury-ruled placement creates a soul mission centered on bringing precision, refinement, and practical service to whatever domain he chooses to focus on.



## Contribution Archetype: The Systems Healer

The integration of Virgo's precision with Cancer's nurturing instinct and Sagittarius's expansive vision creates what we might call "The Systems Healer" archetype. This represents someone uniquely positioned to:

- Identify broken systems that cause unnecessary suffering
- Apply analytical precision to understand root causes of dysfunction
- Design improvements with both technical excellence and human-centered values
- Implement solutions that bring practical relief while maintaining ethical standards
- Teach others how to maintain and further refine these improved systems

## Legacy Path and Long-Term Vision

The highest expression of this purpose involves creating lasting impact through the design or optimization of systems that bring relief and order to others. This could manifest in numerous domains:

- Health policy reforms that improve access to care
- Educational frameworks that better serve diverse learning needs
- Technological infrastructure designed with human psychology in mind



# Role Fitment Matrix

Based on the integration of Kaustubh's desire (Moon in Cancer), reality framework (Jupiter in Sagittarius), and purpose (Sun in Virgo), we can assess the alignment potential of various career and business paths. This matrix evaluates how well different roles activate these three key planetary drivers simultaneously.

## Best-Suited Career/Business Paths

Role Path	Alignment Score	Strategic Notes
Research Analyst / Policy Expert	92%	Perfect blend of analytical precision with societal impact
Strategic Consultant	89%	Leverages foresight and system-thinking in varied contexts
Psychologist / Therapist	86%	Directly activates emotional mission but requires additional training
Systems Designer (GovTech/Health)	84%	Strong match for precision + service orientation
Academic / Educator	82%	Activates Jupiter's teaching energy with Moon's nurturing

## Alternate Paths (With Risk Profile)

Role Path	Score	Risk Profile
Entrepreneur (Tech/Wellness)	78%	Success depends on structured mentors and focus
Media/Journalism	74%	Can scatter energy, needs ethical foundation
Legal/Compliance Officer	71%	Aligned to systems thinking but



## Strategic "Do/Don't" for Alignment

DO:



# Personality Strategy Map

Understanding the interplay between Kaustubh's astrological signature and psychological patterns provides essential insights for maximizing potential while navigating challenges. This section maps key behavioral tendencies that influence professional effectiveness and personal fulfillment.

### Decision-Making Style

Kaustubh's decision process typically follows a pattern of intuitive insight first (Cancer Moon), followed by philosophical/ethical analysis (Sagittarius Jupiter), and finally practical assessment of implementation details (Virgo Sun). This creates a unique three-phase approach where emotional intelligence, big-picture thinking, and detailed execution planning work together.

This sequence can be disrupted when emotional safety feels threatened, potentially leading to overthinking or analysis-paralysis. The natural strength lies in synthesizing both emotional and factual data before taking action.

### Conflict Zones & Inner Resistance

Primary tension points emerge when working with authority figures who lack emotional intelligence or in environments that prioritize metrics over meaning. The natural response may be to withdraw energy rather than engage in direct confrontation.

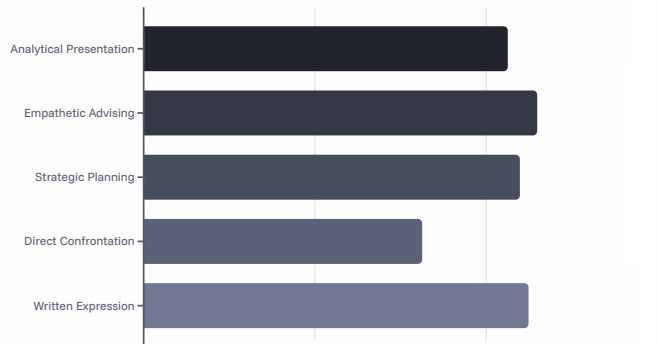
Inner resistance typically appears as a sense of misalignment or discomfort when roles conflict with personal values or when asked to compromise on quality standards. This resistance often manifests as reduced enthusiasm rather than outright refusal.

### Productivity Triggers & Emotional Fuel

Peak performance occurs in environments that combine emotional safety with intellectual challenge and practical impact. The need for occasional solitude to process and integrate experiences is essential for maintaining energy levels.

Primary motivational fuel comes from appreciation of contribution, trust in capabilities, and clear connection to meaningful outcomes. Recognition that highlights both the quality of work and its positive impact on others creates the strongest engagement.

## Communication Style Matrix



# Astrological Timelines

Astrological transits provide a cosmic timing mechanism that can help identify optimal windows for specific types of advancement and development. By mapping planetary movements against Kaustubh's natal chart, we can identify periods of heightened opportunity and potential challenge.

## Key Transits & Activation Windows



## Breakthroughs and Challenges

Phase	Nature	Strategic Insight



# Personal Strategy Scorecard

This section provides a quantitative assessment of Kaustubh's astrological configuration and its practical implications. The scorecard evaluates the internal coherence between desire, reality, and purpose, along with the external applicability of this configuration to current market and societal needs.



## Overall Alignment Score

Strong internal coherence between emotional drivers, opportunity framework, and conscious purpose, indicating high potential for integrated career satisfaction and impact.

## Market Relevance

Exceptional match between Kaustubh's natural capabilities and emerging societal needs in areas of systems improvement, ethical guidance, and human-centered design.



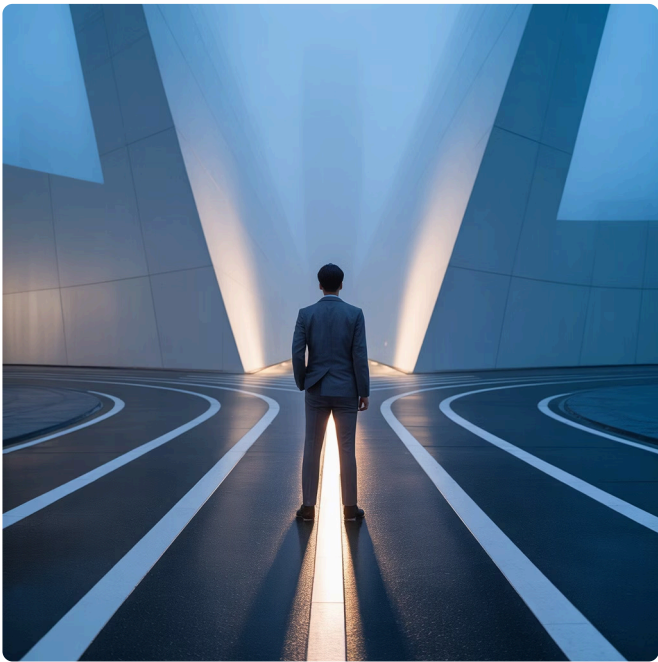
## Execution Readiness

Strong foundation with some development areas in translating conceptual understanding into consistent practical implementation under varying conditions.

## Strategic Leverage Zones

These represent domains where Kaustubh's astrological signature creates natural advantage and flow:

- **Systems Thinking:** Natural ability to see patterns, identify inefficiencies, and design improvements that benefit human experience
- **Trust-Based Communication:** Capacity to build deep rapport and create psychological safety in professional relationships
- **Ethical Clarity:** Strong internal compass for navigating complex situations with principled thinking
- **Educational Design:** Talent for structuring knowledge in accessible ways that facilitate genuine understanding



## Areas to Approach with Caution

These represent domains where additional structure or support may be needed for success:

# The Final Roadmap

This final section synthesizes all previous analysis into a concrete action plan with prioritized pathways and immediate next steps. The goal is to translate astrological insight into practical career strategy that maximizes Kaustubh's unique configuration of strengths and opportunities.

## Top 3 Paths to Pursue (Ranked)

1

### Strategic Consultant / Policy Expert

This path represents the highest alignment with Kaustubh's full astrological signature, combining:

- Analytical precision from Virgo Sun
- Ethical clarity and expansive thinking from Sagittarius Jupiter
- Emotional intelligence and nurturing instinct from Cancer Moon

Focus areas might include healthcare policy, educational system design, organizational transformation, or ethical technology implementation. This path offers exceptional flexibility while maintaining structural impact.

2

### Therapeutic + Systems Fusion Work

This innovative path combines healing modalities with structural improvement:

- Organizational psychology or team dynamics consulting
- Trauma-informed system design for institutions
- Executive coaching with focus on ethical leadership
- Mental health technology or service delivery innovation

This direction powerfully activates both the nurturing Cancer Moon and the systematic improvement drive of Virgo Sun.

3

### Academic or Thought Leadership

This path leverages Jupiter's natural teaching energy:

- Research and publication in chosen specialty area
- Development of frameworks or methodologies
- Educational program design or curriculum development
- Speaking, writing, or content creation on expertise domains

This direction creates lasting impact through knowledge dissemination while establishing authority in a chosen field.

## What to Start Doing Today

Regardless of which specific path is chosen, certain foundational activities will build momentum across all potential directions:

- Build Long-Form Thought Assets:** Begin creating substantive content that demonstrates your thinking process and



# Final Recommendations and Implementation Timeline

As we conclude this Astro-Purpose Analysis for Kaustubh Savant, it's important to synthesize the key insights into an actionable implementation timeline. The exceptional alignment between emotional core (Cancer Moon), philosophical framework (Sagittarius Jupiter), and service mission (Virgo Sun) creates a powerful foundation for impact as a Corrective Strategist in systems that need both analytical precision and human-centered design.

## Immediate (Next 6 Months)

Focus on knowledge consolidation and strategic positioning:

- Audit current skills against target roles to identify specific development needs
- Begin creating substantive content that demonstrates systems thinking abilities
- Identify 2-3 mentors who represent different aspects of chosen direction
- Join 1-2 professional communities aligned with strategic path

## Mid-Term (18-36 Months)

Leverage 2026 expansive window for major positioning:

- Position for significant role advancement or practice expansion
- Consider international opportunities or cross-cultural projects
- Formalize methodologies into teachable or scalable assets
- Build team or collaborative network to extend impact

## Short-Term (6-18 Months)

Build visibility and specialized expertise:

- Develop a signature framework or methodology in chosen domain
- Secure speaking or teaching opportunities to test ideas and build authority
- Establish consistent content creation rhythm (articles, case studies, analyses)
- Begin advising or consulting in limited capacity to build case studies

## Long-Term (3-5 Years)

Consolidate legacy-level work:

- Establish thought leadership position in chosen domain
- Create lasting institutional or systemic improvements
- Mentor others to extend impact beyond personal capacity
- Integrate knowledge across multiple domains for unique contribution

## Critical Success Factors

Five elements that will significantly influence success across any chosen path:

