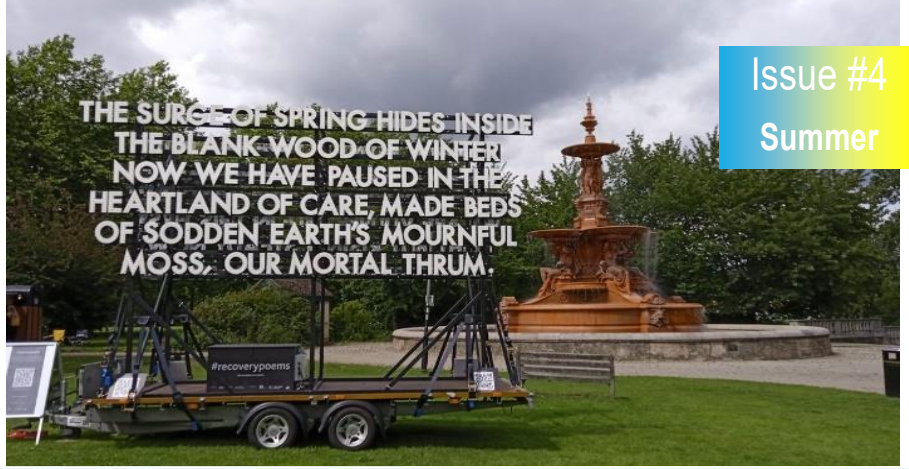


Coming Soon >>>

The Friends of Victoria Park are having a Teddy Bears Picnic and Family Fun Run in Victoria Park! To join them on Saturday 28<sup>th</sup> August, follow their Facebook page or go to their website for the most up to date information! [www.victoriaparkashford.uk](http://www.victoriaparkashford.uk)



THE SURGE OF SPRING HIDES INSIDE  
THE BLANK WOOD OF WINTER  
NOW WE HAVE PAUSED IN THE  
HEARTLAND OF CARE, MADE BEDS  
OF SODDEN EARTH'S MOURNFUL  
MOSS, OUR MORTAL THRUM.



Issue #4  
Summer

A Quarterly Insight into the Victoria Park Project

# Victoria Park Ashford



VPYC News!! >>>

## Victoria Park Youth Council Continue Their Fantastic Work

The Youth Council continues to flourish with in-park meetings now taking place

Our Youth Council has been able to start meeting in person enabling them to start working on activities such as the designs for the meadow maze on Watercress Fields. They have planned and executed the annual Victoria Park Kids Takeover Week which saw them deciding on and creating content for our social media and, this year, explored more in-park activities. The youth council also have opportunities for other activities and events in the plan including consultation on potential volunteer roles and training opportunities for young people. For more information on joining the youth council please email project Youth Involvement Officer Nicola on [Nicola.priest@ashford.gov.uk](mailto:Nicola.priest@ashford.gov.uk)

## BugBlitz hits Watercress Fields!

Kentish Stour Countryside Partnership held another successful family activity day!

As part of the Victoria Park Project Kentish Stour Countryside Partnership, our chosen partners for conservation, continue to deliver fantastic family activity days. This time around it was a 'BugBlitz', exploring the invertebrates that inhabit our park space through these summer months. Participants could take a guide and a sheet for recording their finds and were allocated a small area of space to find and identify as many invertebrates as possible. There were plenty of volunteers on hand to help with the wonderful Bumblebee Conservation Trust and Butterfly Conservation teams offering specialist assistance too.



The most popular activity was the bug safari's with all the volunteers taking families on a tour of the wildlife using bug-friendly nets and magnifying glasses to take a closer look. KSCSP have more family activities coming up this summer. The details are further on in this newsletter. Thank you to KSCSP for all their continued hard work making the park wildlife accessible to all and to all the attendees for their support of the day.

For more information about KSCSP, please go to or to join them as a Victoria Park Conservation Volunteer contact our Volunteer and Community Engagement Officer Vicky at [Victoria.fannon@ashford.gov.uk](mailto:Victoria.fannon@ashford.gov.uk)

Quarter in Review >>>

## Welcome to the Watercress Fields Meadow!

*This Summer has seen the growth of the meadow area in Watercress Fields.*

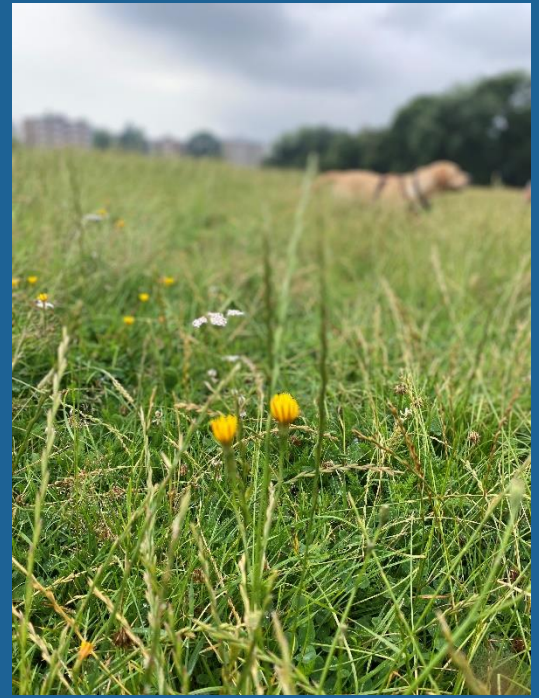
As part of activities run by the Victoria Park Project we are working with ASPIRE to develop the space from a simple cut field into a mixture of accessible field space for sports and recreation, and a more biodiverse meadow area.

There are paths currently cut into the meadow to enable safe passage across whilst enjoying the developing ecology. These paths will potentially be further developed so that as well as having access across the space there will be fun 'mazes' cut into the meadow to entice younger

in to engage with our wildlife and flora and fauna in a different way.

Our Youth Council are exploring options in their meetings and creating potential designs for a maze. The Youth Council are also considering previous advice from consultation with key partners such as ASPIRE and Kentish Stour Countryside Partnership to take into account both conservation issues and the practicalities of creating and maintaining both the meadow and the maze.

**For more information on joining the youth council please email project Youth Involvement Officer Nicola on [Nicola.priest@ashford.gov.uk](mailto:Nicola.priest@ashford.gov.uk)**



Coming soon >>>

*Our Autumn Edition will be out in October!*

## Follow Us>



Email: [VictoriaPark@ashford.gov.uk](mailto:VictoriaPark@ashford.gov.uk)

## Friends of Victoria Park

If you're interested in becoming a Friend of the park, please look at the website: [victoriaparkashford.uk/](http://victoriaparkashford.uk/)

Quarter in Review >>>

## Fabric of Ashford and the Recovery Poem

*July and August saw Love Ashford and Emergency Exit Arts bring their 'Fabric of Ashford' event to the Hubert Fountain at Victoria Park*

In partnership with Emergency Exit Arts, Loveashford is hosting The Fabric of Ashford, a community co-creation art project which will see colourful fabric squares, created and designed by the local community brought together to decorate the town centre bandstand.

The installation will be a collective effort that grows over the summer, and will capture Ashford's journey to recovery following the pandemic. Free textile workshops will be coming to Victoria Park in July and August allowing the public to create fabric-based artwork to contribute to the installation.

People will be encouraged to think about three key themes:

**Tribute:** a moment to commemorate who and what we have lost.

**Together:** how has the Ashford community come together and who can we celebrate?

**Tomorrow:** a new day. Looking forward with hope and reimagining a new dawn.

For those unable to attend the workshops, donated fabric can be collected from Made in Ashford in Park Mall for people to craft their creations from home. They can then be dropped back to the shop and added to the installation.

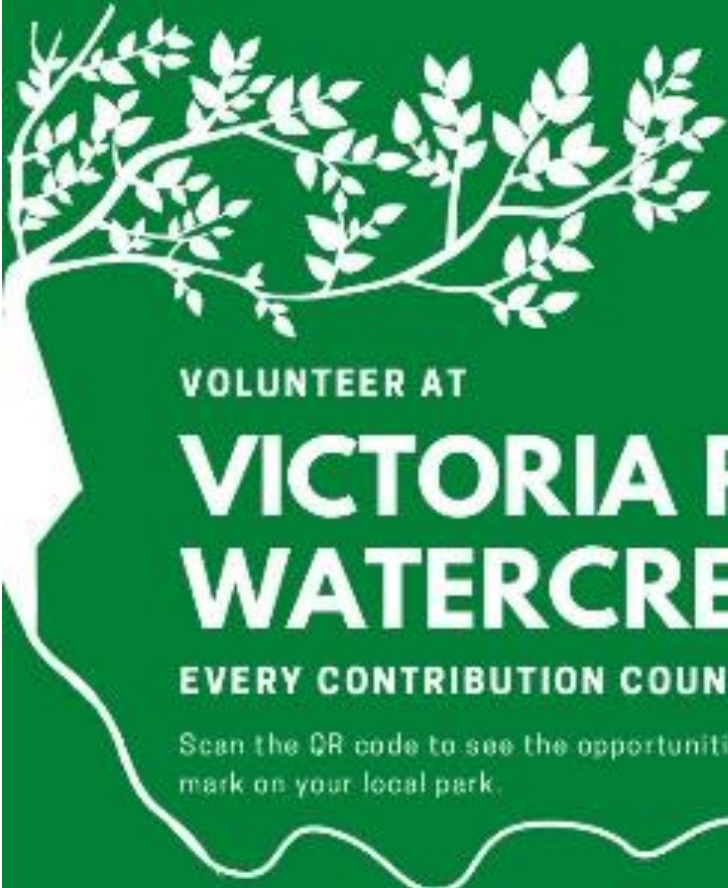
**Workshop times and dates:**

**Saturday 14th August**

Workshop 1: Victoria Park (by the Hubert Fountain), 1pm-4pm

Workshop 2: Elwick Place, 5pm-8pm





VOLUNTEER AT

# VICTORIA PARK & WATERCRESS FIELDS

EVERY CONTRIBUTION COUNTS

Scan the QR code to see the opportunities available and make your mark on your local park.



## VICTORIA PARK YOUTH COUNCIL

# VPYC

DO YOU WANT TO GIVE YOUR  
OPINION ON YOUTH ACTIVITIES  
IN VICTORIA PARK?



# ***WE NEED NATURE NATURE NEEDS YOU!***



## **Join the VICTORIA PARK CONSERVATION VOLUNTEERS**

all welcome over 16 years old

*Meet people, get active, enjoy the outdoors and make a difference.*

*There will be an introduction to the different kinds of habitat and wildlife that can be found in the parks.*

*Talks and workshops will be given by professionals on some of the many different species of flora and fauna that can be found here.*

*Help manage and create space for nature to thrive and for people to enjoy.*



### **THE CONSERVATION TASKS**

- 5 tasks spread out over the year - dates to be confirmed
- Tools will be provided with a tool talk on safe use of different equipment
- Each task will start with a short talk on the work and how it benefits specific species or biodiversity in general
- Tasks days will start at 9:30 and finish around 3:30 (with breaks of course!)
- All you need is your own packed lunch, refreshments, sturdy footwear, waterproofs and a love of the outdoors.



**To find out more and sign up to be a volunteer contact:**

Diane Comley from the Kentish Stour Countryside Partnership

Email: [diane.comley@kent.gov.uk](mailto:diane.comley@kent.gov.uk) or [victoria.fannon@ashford.gov.uk](mailto:victoria.fannon@ashford.gov.uk)

Telephone: 03000 410900 (leave a message if no answer)



# River Dipping and Arts



## in Watercress Fields at Victoria Park



Come and discover the hidden watery world of the River Great Stour and some of the wee creatures that live there. Then create your own artwork based on your experience to take home.

Thursday August 12th - from 10<sup>am</sup> to 12<sup>pm</sup>  
& Thursday August 19th - from 1<sup>pm</sup> to 3<sup>pm</sup>



There are limited spaces so you must  
**PRE-BOOK YOUR PLACE**  
(max 3 children per booking)!

Only Two Sessions

BOOK NOW!

Email: [kentishstour@kent.gov.uk](mailto:kentishstour@kent.gov.uk)  
or call 03000 410900,

We will confirm your reservation with location details.

For accompanied children 5 - 15 years old.  
Children must have footwear they can use in the water, so wellies or similar.

Check out our work at [www.kentishstour.org.uk](http://www.kentishstour.org.uk)



@VictoriaParkAshford

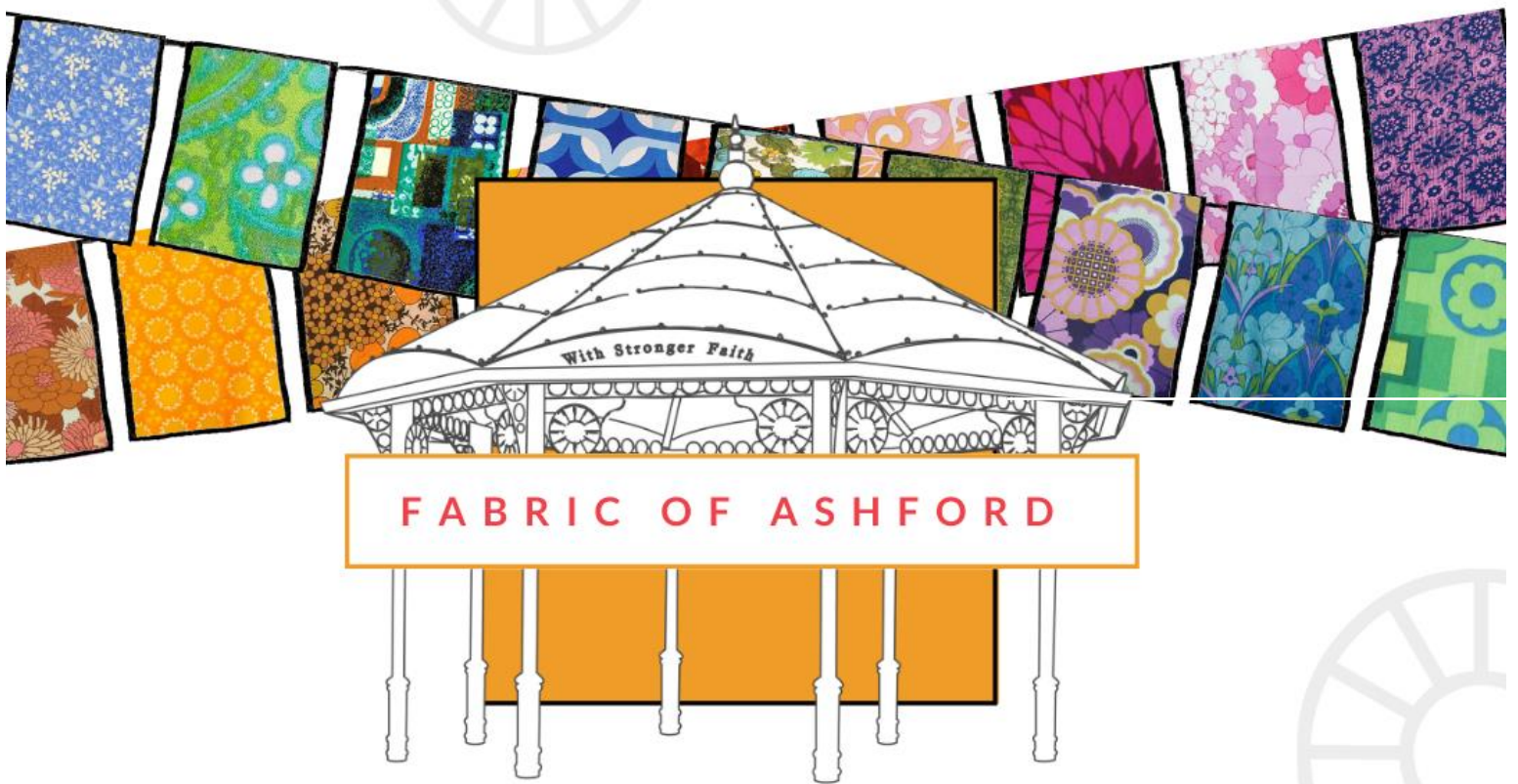


@VictoriaParkABC



@VictoriaParkAshford





**TAKE PART IN A COMMUNITY EFFORT  
TO TRANSFORM THE ASHFORD BANDSTAND**

ATTEND A FLAG WORKSHOP | DONATE MATERIALS | CREATE AT HOME

**FLAG WORKSHOP + BANDSTAND TAKEOVER | 17TH JULY**

BANDSTAND | HIGH STREET | 12PM - 8PM

**FLAG WORKSHOP | 31ST JULY**

VICTORIA PARK | JEMMETT ROAD | 1PM - 4PM  
ELWICK PLACE | 5PM - 8PM

**FLAG WORKSHOP | 14TH AUGUST**

VICTORIA PARK | JEMMETT ROAD | 1PM - 4PM  
ELWICK PLACE | 5PM - 8PM