



Sunkist.

Multi Vitamin Soft Serve



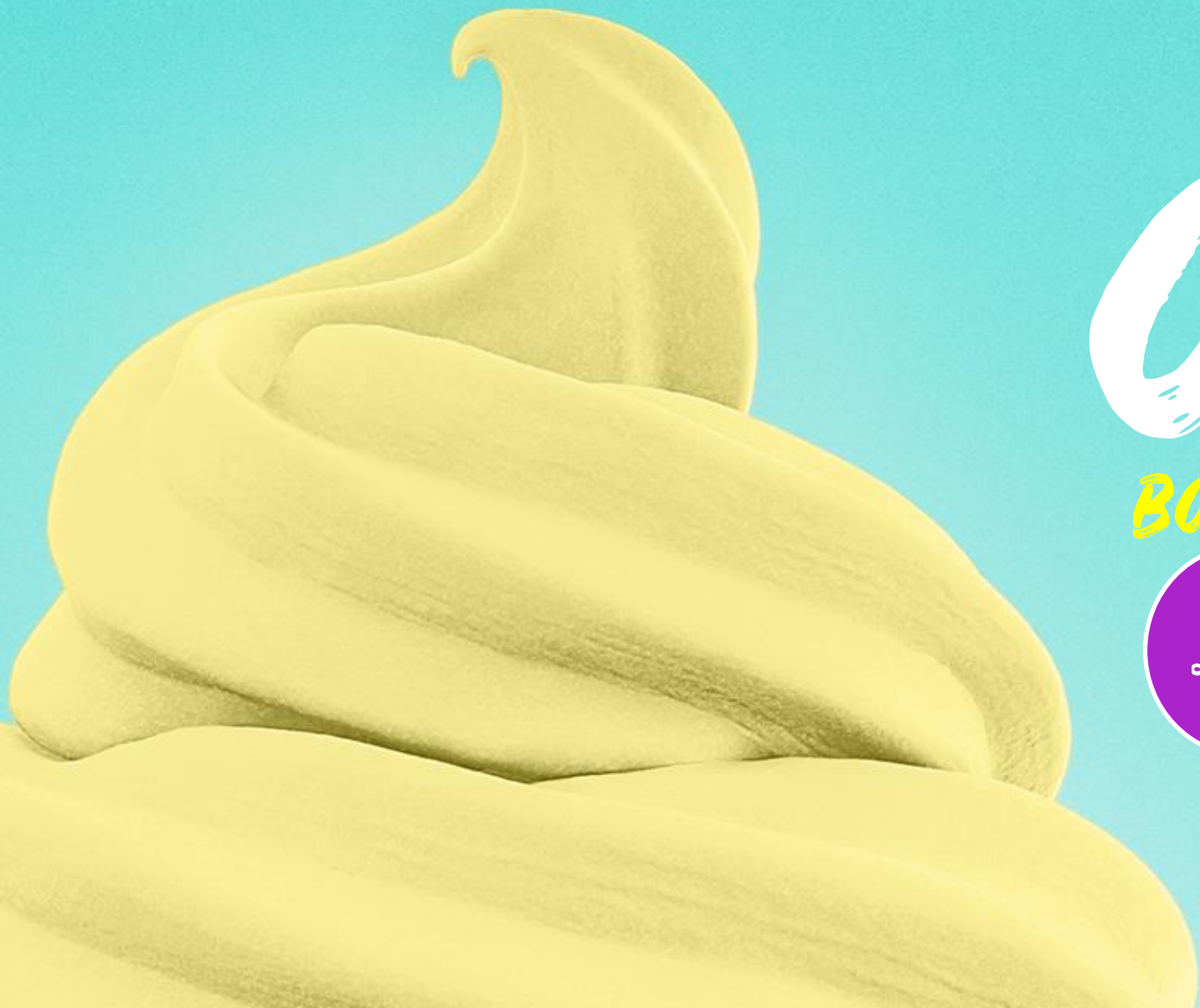
Fresh

FROM THE GROVES

FROM OUR FAMILY FARMS TO YOUR TABLE.

**SUNKIST® IS SYNONYMOUS WITH HIGH-QUALITY CITRUS AND REFRESHING FLAVOR. COMBINED WITH FROZEN BEAN'S
INGENUITY AND COMMITMENT TO CUSTOMER SATISFACTION AND CONVENIENCE, SUNKIST® SOFT-SERVE OFFERS
CUSTOMERS UNRIVALED TASTE, CONVENIENCE, AND AFFORDABILITY.**





ICE CREAM

BOOSTS' YOUR IMMUNITY



SUNKIST®
STRAWBERRY
SOFT-SERVE

"HEALTHIER"
Soft-Serve

HEALTHY & GOURMET FLAVORED SOFT-SERVE TREATS ARE FAST BECOMING ONE OF THE MOST POPULAR DESSERT AND SNACK TRENDS.

25%

OF U.S. CONSUMERS SAID
ICE CREAM
WAS THEIR FAVORITE DESSERT

- DATASSENTIALS

NEARLY 30% OF ALL ICE CREAM
LOVERS PREFER SOFT-SERVE
OVER SCOOP ICE-CREAM

- YAHOO FOOD

65%

OF AMERICANS
LOOK FOR FUNCTIONAL
BENEFITS FROM FOOD
AND DRINKS

- KERRY GROUP 2019

27%

INCREASE OF GLOBAL
MARKET SHARE IN
"BETTER-4-YOU"
HEALTH & WELLNESS

- RESEARCH & MARKETS 2020



ZINC
MINERALS

C+
VITAMINS

DAILY
D
VITAMINS

SUNKIST vs DOLE WHIP

what's inside matters...



NATURALLY FLAVORED
ONLY 5g SUGAR
VITAMINS C, D & ZINC
60 CALORIES
16g CARBS

ARTIFICIAL FLAVORS
24g SUGAR
NONE
110 CALORIES
26g CARBS

(*based on 2/3 cup serving)

"THE MOST SOUGHT AFTER
FOODS ARE THOSE WITH
NO ARTIFICIAL INGREDIENTS
AND NO PRESERVATIVES"

- L.E.K CONSULTING 2020

NO
ARTIFICIAL
COLORS

NO
ARTIFICIAL
FLAVORS

NO
ARTIFICIAL
SWEETENERS

SUNKIST®
PINEAPPLE
SOFT-SERVE





VOTED
#1

MOST POPULAR DESSERT
WORLDWIDE!

- FOOD INSIDER

DID YOU KNOW?

Ice Cream / Soft-Serve / Frozen Yogurt / Sorbet

What's the difference?

There are so many options when it comes to frozen desserts. Ice-cream, **soft-serve**, frozen yogurt, gelato and sorbet – what is the difference between all of them? Any of these sweet treats can be incorporated into a healthy, well-balanced diet.

75%

OF AMERICAN ADULTS SAY
THEY ARE TRYING TO CONSUME
LESS SUGAR

-INTERNATIONAL FOOD INFORMATION COUNCIL



No Artificial Sweeteners

ONLY
5g
or less
SUGAR
PER SERVING





ORANGE

PRODUCT CONSISTENCY & COLOR
MAY VARY BY MACHINE



INSTANT
SOFT-SERVE



SOFT
SERVE



GRANITA
BEVERAGE



BLENDED
DRINK

PRODUCT YIELD CHART (SOFT-SERVE)

CASE = 5 / 2LB BAGS

160OZ/BAG | 800OZ/CASE

(4 OZ SUGGESTED SERVING SIZE)
40/BAG | 200/CASE

MIXING : SIMPLY ADD 1 GALLON OF WATER



PINEAPPLE

PRODUCT CONSISTENCY & COLOR
MAY VARY BY MACHINE



INSTANT
SOFT-SERVE



SOFT
SERVE



GRANITA
BEVERAGE



BLENDED
DRINK

PRODUCT YIELD CHART (SOFT-SERVE)

CASE = 5 / 2LB BAGS

160OZ/BAG | 800OZ/CASE

(4 OZ SUGGESTED SERVING SIZE)
40/BAG | 200/CASE

MIXING : SIMPLY ADD 1 GALLON OF WATER



DEACH

PRODUCT CONSISTENCY & COLOR
MAY VARY BY MACHINE



INSTANT SOFT-SERVE

Nutrition Facts
About 40 servings per container
Serving size 4 fl oz (1/2 Cup) (65g)

Amount per serving		45
Calories		
% Daily Values*		
Total Fat	0g	0%
Saturated Fat	0g	0%
Trans Fat	0g	0%
Cholesterol	0mg	0%
Sodium	15mg	1%
Total Carbohydrate	12g	4%
Dietary Fiber	0g	0%
Total Sugar	3g	6%
Includes 3g Added Sugars		6%
Protein	0g	
<hr/>		
Vitamin D	5mcg	25%
Calcium	24mg	5%
Iron	4mg	0%
Vitamin A	58mcg	11%
Vitamin C	45mg	50%
Vitamin E	1mg	6%
Vitamin K	8mcg	6%
Vitamin D	0.1mg	8%
Vitamin B ₁	0.1mg	2%
Vitamin B ₂	0.1mg	6%
Vitamin B ₆	0.1mg	6%
Vitamin B ₁₂	0.1mcg	20%

*Percent Daily Values are based on a diet of other people's misdeeds.

Ingredients: Maltodextrin, Crystalline Fructose, Gum Solids, Citric Acid, Natural Flavors, Vitamin Blend (Vitamin A, Vitamin D3, Vitamin E, Calcium, Ascorbic Acid, Vitamin C, Pantoic Acid, Pyridoxine, Vitamin B2, Thiamine, Vitamin B6, Vitamin K1, Biotin, Cellulose Gum, Xanthan Gum, Guar Gum, Yucca Powder (Coloring), Ascorbic Acid, Stevia Extract, Sodium Citrate, Calcium Carbonate, Anti-Caking Agents, Zinc, Glutamine, Aspartic Acid, Inulin, and Vitamin D3.



STRAWBERRY

PRODUCT CONSISTENCY & COLOR
MAY VARY BY MACHINE



INSTANT SOFT-SERVE

Nutrition Facts
About 40 servings per container
Serving size 4 fl oz (1/2 Cup) (65g)

Amount per serving		45
Calories		
	% Daily Value*	
Total Fat 0g	0%	
Saturated Fat 0g	0%	
Trans Fat 0g	0%	
Cholesterol 0mg	0%	
Sodium 15mg	1%	
Total Carbohydrate 12g	4%	
Dietary Fiber 0g	0%	
Total Sugars 3g	6%	
Includes 3g Added Sugars	6%	
Protein 0g		
Vitamin D 5mcg	25%	
Calcium 24mg	3%	
Iron 0mg	0%	
Potassium 4mg	0%	
Vitamin A 58mcg	11%	
Vitamin C 45mg	50%	
Vitamin E 1mg	6%	
Vitamin K 8mcg	6%	
Vitamin B1 0.1mg	8%	
Niacin 0.1mg	8%	
Iron 1mg	6%	
Vitamin B12 0.1mg	6%	
Pantothenic Acid 0mg	0%	
Cin 0mg	20%	

*The % Daily Values (DV) tell you how much a nutrient in a serving of food contributes to a daily diet. A diet of 2,000 calories a day is used as the basis for calculation.

Ingredients: Maltodextrin, Crystalline Fructose, Citric Acid, Natural Flavors, Vitamin B12, Vitamin A, Vitamin D3, Vitamin E, Calcium, Ascorbic Acid, Nicotinic Acid, Pyridoxine, Vitamin B2, Thiamine, Vitamin K1, Biotin, Cellulose Gum, Xanthan Gum, Guar Gum, Tartronic Powder (Coloring), Ascorbic Acid, Stevia Extract, Sodium Citrate, Calcium Carbonate, Zinc, Disodium Phosphate, Annatto (Coloring), Orange Oil, Vitamin D3.



SOFT SERVE



GRANITA
BEVERAGE



BLENDING DRINK

PRODUCT YIELD CHART (SOFT-SERVE)

CASE = 5 / 2LB BAGS

160oz/BAG | 800oz/CASE

40/BAG | 200/CASE

MIXING : SIMPLY ADD 1 GALLON OF WATER



SOFT SERVE



**GRANITA
BEVERAGE**



**BLENDED
DRINK**

PRODUCT YIELD CHART (SOFT-SERVE)

CASE = 5 / 2LB BAGS

160oz/BAG | 800oz/CASE

(4 OZ SUGGESTED SERVING SIZE)
40/BAG | 200/CASE

MIXING : SIMPLY ADD 1 GALLON OF WATER



ITEM# FG700106-B
©2022 THE FROZEN BEAN, INC.
PKG-0606

Nutrition Facts

About 40 servings per container
Serving size 4 fl oz (1/2 Cup) (65g)

Amount per serving
Calories **50**

	% Daily Value*
Total Fat 0g	0%
Saturated Fat 0g	0%
Trans Fat 0g	
Cholesterol 0mg	0%
Sodium 25mg	1%
Total Carbohydrate 12g	4%
Dietary Fiber 0g	0%
Total Sugars 4g	
Includes 4g Added Sugars	8%

Protein 0g	
Vitamin D 5mcg	25%
Calcium 24mg	2%
Iron 0mg	0%
Potassium 1mg	0%
Vitamin A 58mcg	6%
Vitamin C 45mg	50%
Vitamin E 1mg	6%
Vitamin K 8mcg	6%
Thiamin 0.1mg	8%
Riboflavin 0.1mg	8%
Niacin 1mg	6%
Vitamin B ₆ 0.1mg	6%
Pantothenic Acid 0mg	0%
Zinc 2mg	20%

* The % Daily Value (DV) tells you how much a nutrient in a serving of food contributes to a daily diet. 2,000 calorie a day is used for general nutrition advice.

***** Soft Serve Nutrition Facts *****



ITEM# FG700105-B
©2022 THE FROZEN BEAN, INC.
PKG-0605

Nutrition Facts

About 40 servings per container
Serving size 4 fl oz (1/2 Cup) (65g)

Amount per serving
Calories **45**

	% Daily Value*
Total Fat 0g	0%
Saturated Fat 0g	0%
Trans Fat 0g	
Cholesterol 0mg	0%
Sodium 15mg	1%
Total Carbohydrate 12g	4%
Dietary Fiber 0g	0%
Total Sugars 4g	
Includes 3g Added Sugars	6%

Protein 0g	
Vitamin D 5mcg	25%
Calcium 24mg	2%
Iron 0mg	0%
Potassium 1mg	0%
Vitamin A 57mcg	6%
Vitamin C 45mg	50%
Vitamin E 1mg	6%
Vitamin K 8mcg	6%
Thiamin 0.1mg	8%
Riboflavin 0.1mg	8%
Niacin 1mg	6%
Vitamin B ₆ 0.1mg	6%
Pantothenic Acid 0mg	0%
Zinc 2mg	20%

* The % Daily Value (DV) tells you how much a nutrient in a serving of food contributes to a daily diet. 2,000 calorie a day is used for general nutrition advice.

***** Soft Serve Nutrition Facts *****



ITEM# FG700104-B
©2022 THE FROZEN BEAN, INC.
PKG-0604

Nutrition Facts

About 40 servings per container
Serving size 4 fl oz (1/2 Cup) (65g)

Amount per serving
Calories **45**

	% Daily Value*
Total Fat 0g	0%
Saturated Fat 0g	0%
Trans Fat 0g	
Cholesterol 0mg	0%
Sodium 15mg	1%
Total Carbohydrate 12g	4%
Dietary Fiber 0g	0%
Total Sugars 4g	
Includes 4g Added Sugars	8%

Protein 0g	
Vitamin D 5mcg	25%
Calcium 24mg	2%
Iron 0mg	0%
Potassium 4mg	0%
Vitamin A 58mcg	6%
Vitamin C 45mg	50%
Vitamin E 1mg	6%
Vitamin K 8mcg	6%
Thiamin 0.1mg	8%
Riboflavin 0.1mg	8%
Niacin 1mg	6%
Vitamin B ₆ 0.1mg	6%
Pantothenic Acid 0mg	0%
Zinc 2mg	20%

* The % Daily Value (DV) tells you how much a nutrient in a serving of food contributes to a daily diet. 2,000 calorie a day is used for general nutrition advice.

***** Soft Serve Nutrition Facts *****



ITEM# FG700107-B
©2022 THE FROZEN BEAN, INC.
PKG-0607

Nutrition Facts

About 40 servings per container
Serving size 4 fl oz (1/2 Cup) (65g)

Amount per serving
Calories **45**

	% Daily Value*
Total Fat 0g	0%
Saturated Fat 0g	0%
Trans Fat 0g	
Cholesterol 0mg	0%
Sodium 10mg	0%
Total Carbohydrate 12g	4%
Dietary Fiber 0g	0%
Total Sugars 5g	
Includes 5g Added Sugars	10%

Protein 0g	
Vitamin D 5mcg	25%
Calcium 24mg	2%
Iron 0mg	0%
Potassium 0mg	0%
Vitamin A 58mcg	6%
Vitamin C 45mg	50%
Vitamin E 1mg	6%
Vitamin K 8mcg	6%
Thiamin 0.1mg	8%
Riboflavin 0.1mg	8%
Niacin 1mg	6%
Vitamin B ₆ 0.1mg	6%
Pantothenic Acid 0mg	0%
Zinc 2mg	20%

* The % Daily Value (DV) tells you how much a nutrient in a serving of food contributes to a daily diet. 2,000 calorie a day is used for general nutrition advice.

***** Soft Serve Nutrition Facts *****