

Adorned with Leaves Necklace



Adorned with Leaves Necklace

Instructions by Joyce Trowbridge

Materials:

- 5 12x7mm Top Drilled Czech Glass Leaves (**Leaf**)
- 12 6mm Bead Caps (**Bead Cap**)
- 6 5x7mm Czech Glass Rondelles (**Rondelle**)
- 7 6mm Stone Rounds (**S6**)
- 15 inch Strand of 4mm Stone Rounds (**S4**)
- 2 Feet Medium SoftFlex Beading Wire
- 1 Lobster Clasp
- 1 Jump Ring
- 3 Inches Chain
- 3 Crimps
- 3 Crimp Covers

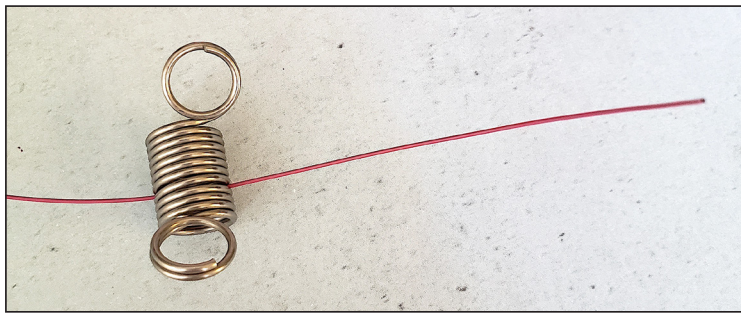
Tools:

- Bead Mat
- Chain Nose Pliers
- Bead Stopper
- Crimping Pliers
- Flexible Beading Wire Cutters



Step 1

Add Stop Bead 2 to 3 inches from one end of the beading wire.



Step 2

A. String:

1 Bead Cap, 1 S6, 1 Bead Cap, 1 Leaf, 1 Bead Cap, 1 S6, 1 Bead Cap,
1 Rondelle, 1 Leaf, 1 Bead Cap, 1 S6, 1 Bead Cap,
1 Rondelle, 1 Leaf, 1 Rondelle,
1 Bead Cap, 1 S6, 1 Bead Cap, 1 Leaf, 1 Rondelle,
1 Bead Cap, 1 S6, 1 Bead Cap, 1 Leaf, 1 Bead Cap, 1 S6, 1 Bead Cap,
Let beads slide to center of beading wire.



Step 3

A. String almost half of the S4 Beads.



B. Move Bead Stopper to side with S4 Beads.



Step 4

String enough **S4** beads to equal the first side. Check length. Add more or take off some for desired length.

**Step 5**

Use Chain Nose Pliers to add **Jump Ring** to **Lobster Clasp**.

**Step 6**

String **1 S6** and **1 Crimp** to one end.

**Step 7**

String through the **Jump Ring**, then go back through the **Crimp** and **S6**.

**Step 8**

Secure **Crimp** with **Crimping Pliers**.

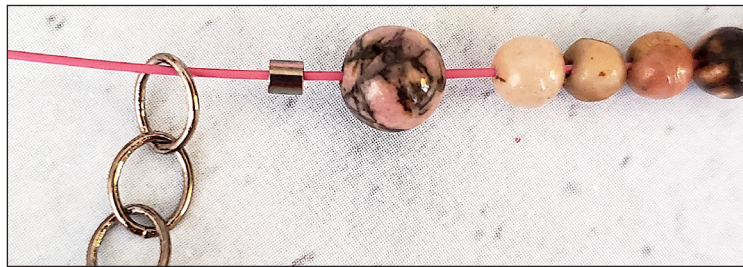
**Step 9**

Use **Chain Nose Pliers** to attach **Crimp Cover** over the **Crimp**.



Step 10

String 1 **S6**, 1 **Crimp** and through one link of the Chain.



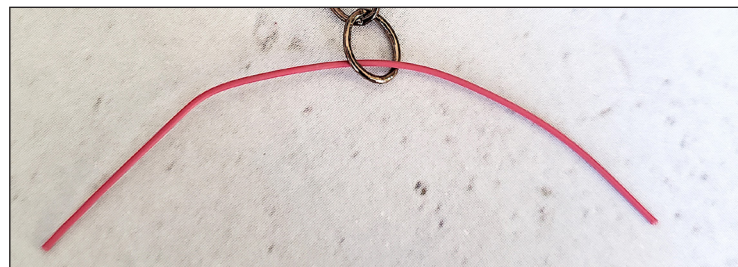
Step 11

Go back through the Crimp and S6. Secure Crimp with Crimping Pliers. Use Chain Nose Pliers to attach **Crimp Cover** over the Crimp. Trim wires.



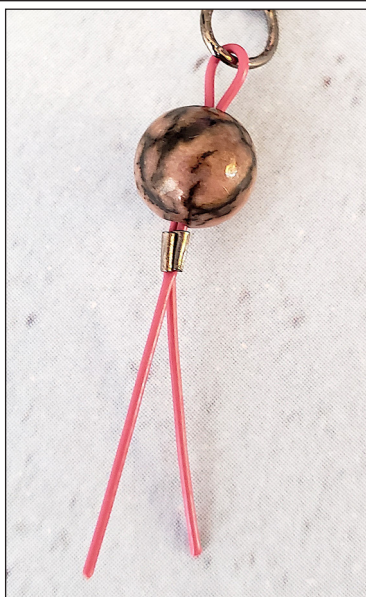
Step 12

Take largest leftover piece of beading wires and go through last link of Chain.



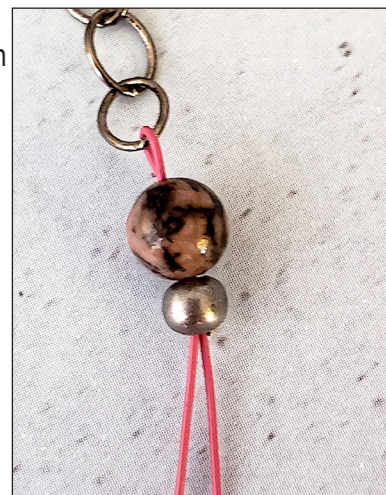
Step 13

Bring end together.
String 1 **S6** and 1 **Crimp** onto both ends.
Secure Crimp with Crimping Pliers.



Step 14

Use Chain Nose Pliers to attach Crimp Cover over Crimp.



Step 15

Trim ends.

