

Botanical Pearl Stretchy Bracelet



Botanical Pearl Stretchy Bracelet

Instructions by Joyce Trowbridge

Materials:

- 24-30 Freshwater Pearls
- 1 TierraCast Botanical Bead
- 3 feet .5mm Elasticity Cord

Tools:

- 1 Bead Mat
- 1 Scissors
- 1 Awl
- E6000 or GS Hypo-Cement Glue



Step 1

A. Cut and pre-stretch **3 feet of Elasticity Cord**. Tie a Double Overhand Knot by starting with an overhand knot then bringing the tail through the loop a second time.



B. Bring the knot near one end and tighten. This is a temporary knot to keep the beads from sliding off.



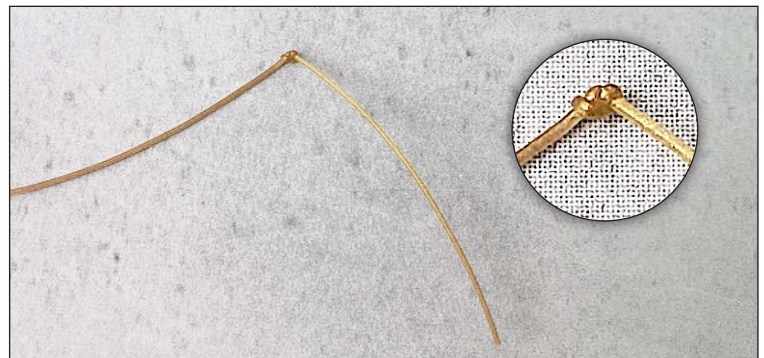
Step 2

String **24-30 Pearls** and let slide to the knot. Beads can be added or subtracted to adjust for size.



Step 3

On the other end, tie a Double Overhand Knot about 4-6 inches from the end.

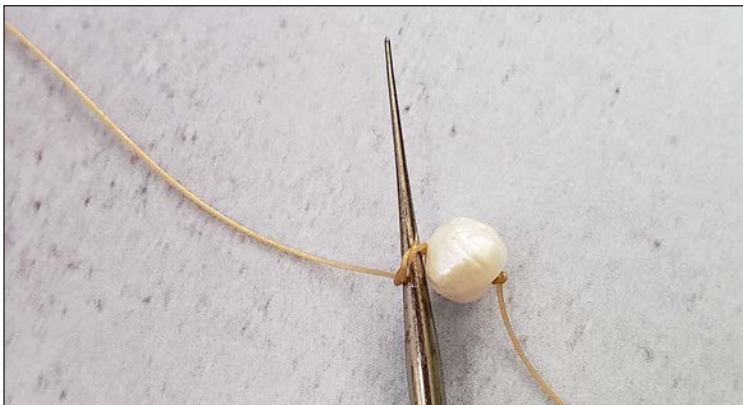


Step 4

A. Slide one Pearl down to the knot. Make a Double Overhand Knot. Leave open for a moment.



B. Place the awl inside the knot. Tighten knot around the awl. Use the awl to bring the knot up against the Pearl.



C. Slide the Awl out of the knot. Don't tighten yet, let it be loose. Bring a new pearl down to the knot. Try not to lift it up from the mat.



D. Tighten the knot by holding the cord with one hand and using the new Pearl to push up against the knot.



Step 5

Repeat Step 4 until the desired length is reached. Add or subtract beads as needed. End with a knot.



Step 6
String the Botanical Bead.



Step 7
Tie the two ends into a Surgeon's Knot.



Step 8
Add some Glue to the knot. Tuck the knot into the Botanical Bead.
Trim ends.

