

Braided Bliss Bracelet



Braided Bliss Bracelet

Materials:

- 22 6mm Round Beads (**Round**)
- 3-3.5 grams Size 8 Seed Beads (**Seed Bead**)
- 12 feet (3 colors of 4 feet each): (**A, B, C**)
Medium SoftFlex Flexible Beading Wire
- 2 Slide Tubes (**Slide Tube**)
- 2 Oval Jump Rings (**Jump Ring**)
- 1 Magnetic Clasp (**Magnetic Clasp**)
- 3 inches of Chain (**Chain**)
- 12 2x2mm Crimp Tubes (**Crimp**)

Instructions by Joyce Trowbridge

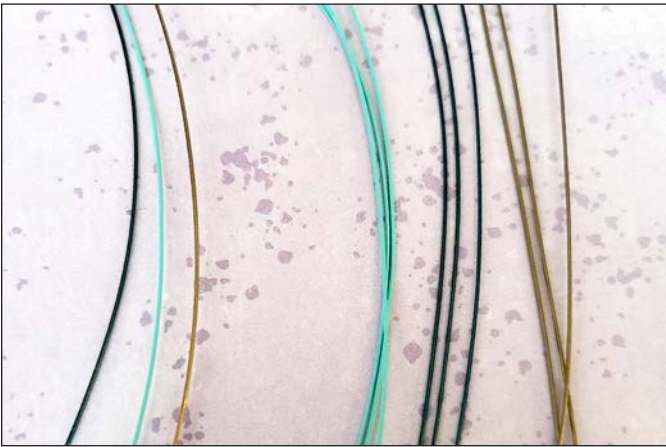
Tools:

- Bead Mat
- 2 Chainnose Pliers
- Crimping Pliers
- Beading Awl
- Flexible Beading Wire Cutters
- Bead Stopper



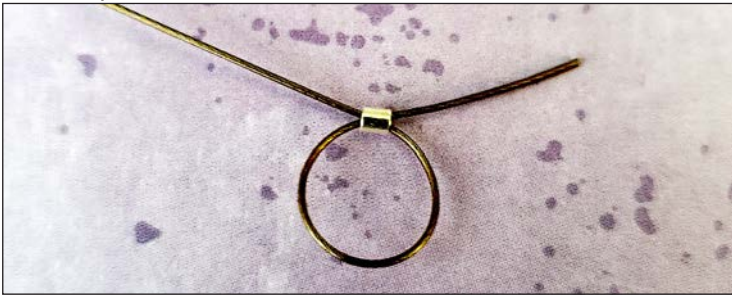
Step 1

Put to the side, 3 one foot pieces of SoftFlex Wire in each A, B, C color.



Step 2

A. Take any of the 3 remaining pieces of SoftFlex beading wire. String 1 Crimp. Loop around and bring beading wire back into the Crimp.



B. Pull loop snug around Crimp. Use crimping Pliers to secure Crimp. Trim Tail.



Step 3

String 1 Seed Bead, 1 Round, 1 Seed Bead, 1 Round until you reach desired length. End with a seed.

Remember Clasp takes up about an inch of your bracelet length.



Step 4

A. String 1 Crimp.

Loop beading wire around and back through Crimp. Leave a little slack within the strung beads.



B. Pull loop snug around Crimp.



Step 5

A. With another piece of beading wire, string **1 Crimp**. Loop beading wire around and through Crimp.



B. Pull loop snug around Crimp Use Crimping Pliers to secure Crimp. Trim Tails.

**Step 6**

String **many Seed Beads**.
Enough to match the length of the Seed Bead/Round combo.

**Step 7**

A. String **1 Crimp**. Loop beading wire around and through Crimp.

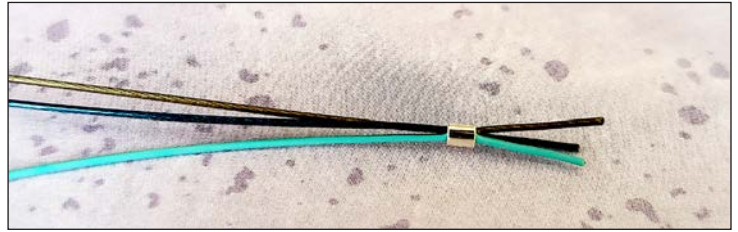


B. Pull loop snug around Crimp. Use Crimping Pliers to secure Crimp. Trim tails.

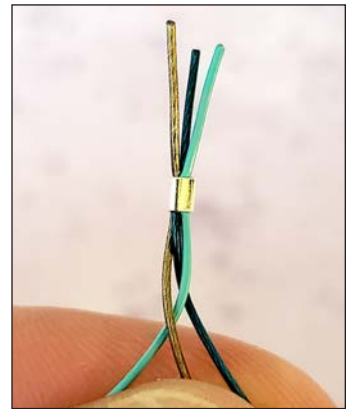
**Step 8**

From the pieces that were put to the side in Step 1, take out 1 of color: (**1 A, 1B, and 1C**).

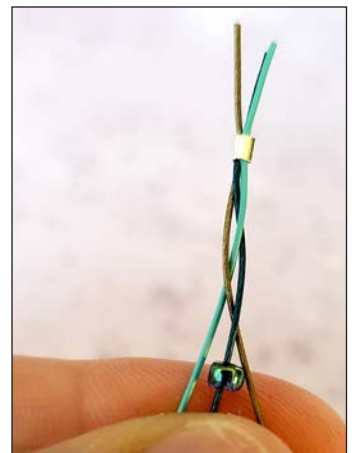
String **1 Crimp** onto the three together. Use Crimping Pliers to secure Crimp.

**Step 9**

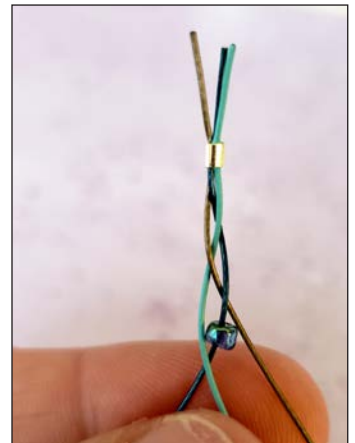
Start to braid, just one or two cross overs.

**Step 10**

A. String **1 Seed Bead** onto the right wire. Cross the right over the middle wire, bring Seed Bead up to sit in the center.



B. Cross left over the middle wire under the Seed Bead to capture it.



Step 11

A. String 1 **Seed Bead** onto the right wire. Cross the right wire over the middle wire, bring Seed Bead up to sit in the center.

B. Cross left over the middle wire under the Seed Bead to capture it.



Step 12

A. Continue to braid with **Seed Bead**.

B. Make it as long as the other two strands. Use a **Bead Stopper** to hold the braid.



Step 13

A. String 1 **Oval Crimp** onto all three wires.

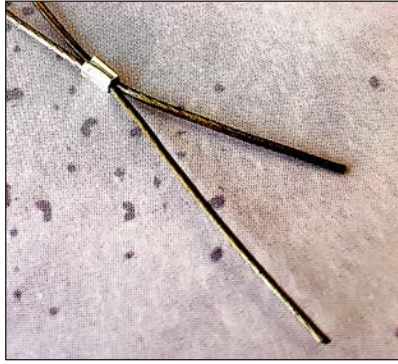


B. Remove **Bead Stopper**. Slide **Crimp** to appropriate spot. Secure **Oval Crimp** with **Crimping Pliers**. Trim tails of both ends.



Step 14

A. Take **2 Color A** beading wires. String **1 Crimp**. Secure Crimp with Crimping Pliers

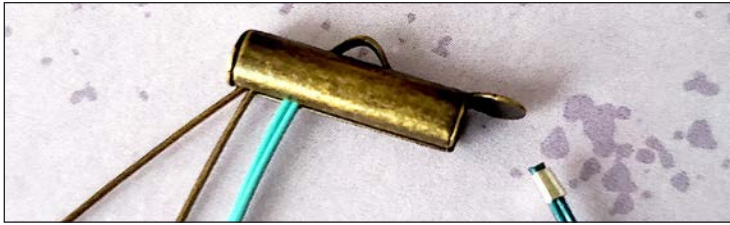


B. Repeat for **Color B** and **C**.



Step 15

A. Slide Crimp end into **Slide Tube** for Color A, B, and C.



B. Treat the double strands as one. Begin to braid.



C. Continue to braid for desired length. Use a Bead Stopper to hold braid.



Step 16

A. String a **Crimp Bead** onto each double strands.



B. Secure Crimp with Crimping Pliers. Trim ends.



Step 17

A. Slide Crimps into the second **Slide Tube**.



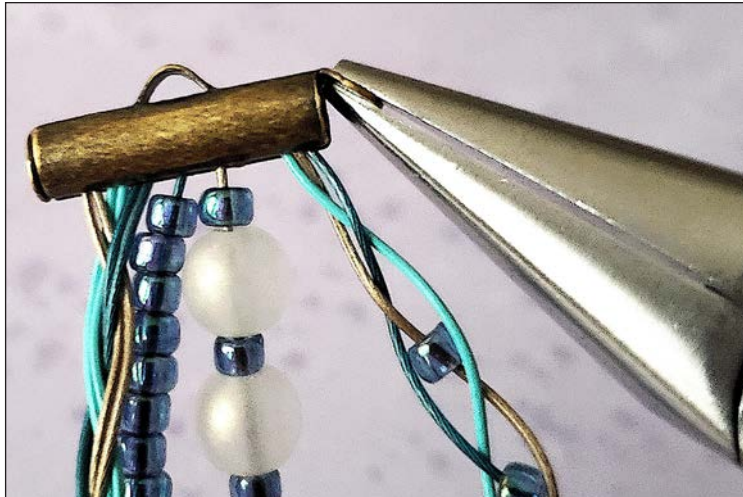
Step 18

On one side, slide the Crimps into the **Slide Tube**.
Braid — Seed Bead — Seed Bead/Round — Seed Bead Braid.



Step 19

A. Use Chain Nose Pliers to start to bend end into close.



B. Close all the way. You may have to press against a hard surface (i.e. outside of pliers, anvil, table. Make sure if pressing against table the it is not your good table!)



Step 20

Slide the Crimps of the other ends onto the second **Slide Tube**.
Try not to twist strands when putting together. Close Slide Tube.



Step 21

Use **Jump Ring** to attach **Magnetic Clasp** and safety **Chain** to the loop of the slide tube.



Step 22

Repeat for second side of using **Oval Jump Ring** to attach **Magnetic Clasp**, **Chain**, and **Slide Tube**.

