

Candy Melon Bracelet



Candy Melon Bracelet

Instructions by Joyce Trowbridge

Materials:

- 8 8mm Melon Beads (**M**)
- 24 3mm Mini Melon Beads (**Mini**)
- 4 6mm Swarovski Bicone Crystal (**6B**)
- 4 4mm Swarovski Bicone Crystal (**4B**)
- 3 Crystal Rondelles (**C**)
- 4 6mm Fire Polished Beads (**FP**)
- 12 Size 6 Toho Demi Beads (**Demi**)
- 4 Ilos Beads (**I**)
- 1 Foot Medium Soft Flex Beading Wire
- 1 TierraCast Toggle Clasp
- 2 Crimps
- 1-2 Oval Jump Rings
- 2 Crimp Covers
- 1 Yard 6lb. Fireline

Tools:

- Bead Mat
- Chain Nose Pliers
- Bead Stopper
- Crimper
- Wire Cutters
- Scissors
- Size 10 Beading Needle



Step 1

Add a **Needle** to one end of **Fireline**. String **Six Minis**. Leave about a 3-4 inch tail.



Step 2

Go through all beads again. Tie tail and Working Thread together. Go through all beads once more. Tie tail and Working Thread together again. Go through a few beads. Trim threads.



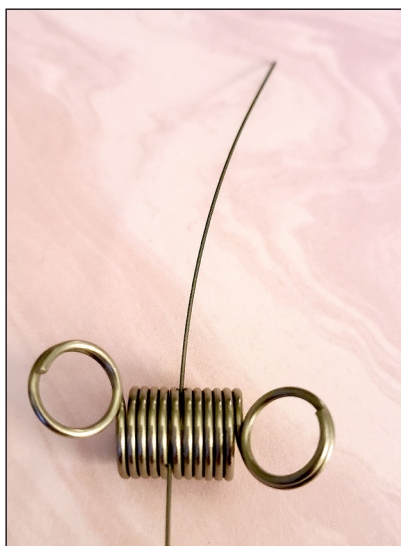
Step 3

Make a total of **Four Melon Rings**.



Step 4

Add **Bead Stopper** 2-3 inches from one end of the **Beading Wire**.



Step 5

String 1 M, 1 Melon Ring, 1 M, 1 Demi, 1 6B, 1 Demi, 1 FP, 1 C, 1 I, 1 Demi, and 1 4B.



Step 6

Continue stringing the same pattern in Step 5 for **two** more repeats.



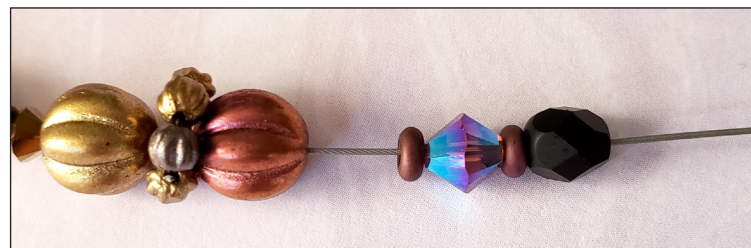
Step 7

String 1 M, 1 Melon Ring, and 1 M.



Step 8

A. Check length. Add more beads to either end of bracelet until you reach your desired length.

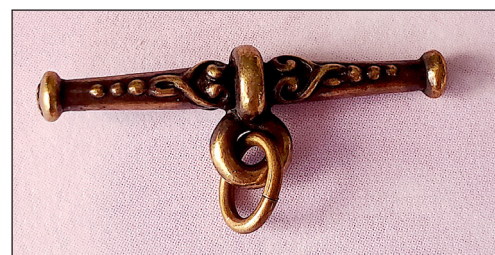


B. This shows different ways to add length.



Step 9

Use Chain Nose Pliers to attach **One Oval Jump Ring** to **Toggle Bar**.



Step 10

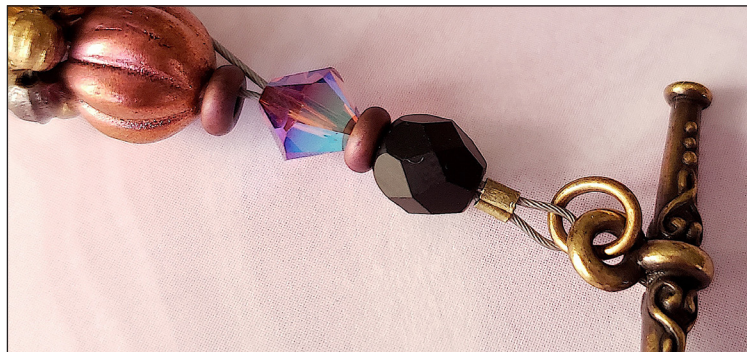
A. String **One Crimp** and go through **Jump Ring** on Toggle Bar.



B. Bring Beading Wire back through Crimp and a few beads.



C. Use Crimping Pliers to secure the Crimp.

**Step 11**

Use Chain Nose Pliers to attach the **Crimp Cover** over crimped Crimp.

**Step 12**

String **One Crimp** and go through **Toggle Ring**. Bring Beading Wire back through Crimp and a few beads. While pulling on slack, circle into bracelet shape to make sure you don't pull to tightly. *Clasping the toggle can help with this.*

**Step 13**

Use Crimping Pliers to secure the Crimp. Use Chain Nose Pliers to attach the **Crimp Cover** over the crimped Crimp. Trim wire.

