

# Knotted Crescent Bracelet





# Knotted Crescent Bracelet

Instructions by Joyce Trowbridge

## Materials:

31 Stone Heishi Beads  
9 6mm Stone Rounds  
5 Stone Art Deco Cut Beads  
4 8mm Large Hole Glass Beads  
10 TierraCast Large Hole Nugget Beads  
1 TierraCast Large Hole Beaded Bead  
6-7 inches Crescent Chain  
1 TierraCast Hammertone Ring  
1 Lobster Clasp  
1 Large Oval Jump Ring  
4 Medium Oval Jump Rings  
2 yards Amiet cord

## Tools:

1 Bead Mat  
2 Chain Nose Pliers  
1 Awl or Tweezers  
1 Scissors  
Glue: E6000 or GS Hypo Cement



## Step 1

Cut **2 pieces of Amiet Cord**, **1 yard each**. With both cords together, fold in half and loop through the **Hammered Ring**. Make a Lark's Head Knot. *This will give you 4 equally long cords attached to the Hammered Ring.*



## Step 2

String all four cords through the **Large Hole Beaded Bead**.

Take two of the cords and tie an Overhand Knot next to the Large Hole Beaded Bead. Leave the other two cords for later.



## Step 3

String **7 Stone Heishi Beads** onto one cord. Bring the two cords together and tie an Overhand Knot near the Stone Heishis. Keep tension slightly loose.

*Bead order in this pattern is a suggestion. Be free to mix up the bead pattern.*

*Use a Double Overhand Knot next to large hole beads.*



## Step 4

String **1 Stone Round** onto one cord. Bring both cords together and make an Overhand Knot.

Repeat to add a **second Stone Round**.





## Step 5

**A.** String **1 Stone Round** onto one cord. Bring both cords together and tie a Double Overhand Knot by bringing the cords through the knot twice.



**B.** Tighten knot.



## Step 6

**A.** String **1 Large Hole Nugget** onto both cords together. String **1 Art Deco** onto one cord. String **1 Large Hole Nugget** onto both cords together.



**B.** Bring both cords together and tie a Double Overhand Knot.



## Step 7

Repeat Steps 3-6 for desired length.



## Step 8

With the other 2 cords, start the next knotted bead layer. Bring the two cords together and tie a Double Overhand Knot.

String **1 Large Hole Nugget** onto both cords together.

String **1 Art Deco** onto 1 cord. String **1 Large Hole Nugget** onto both cords together. Tie a Double Overhand Knot.



## Step 9

String **1 Large Hole Glass Bead**, **1 large Hole Nugget** and **1 Large Hole Glass Bead** onto both cords together.

Tie a Double Overhand Knot.



## Step 10

String **7 Stone Heishi Beads** to one cord. Bring both cords together and tie an Overhand Knot.



## Step 11

String **1 Stone Round** onto one cord. Bring both cords together and tie a Double Overhand Knot.



## Step 12

Repeat Steps 8-11 for desired length.



## Step 13

Close **1 Large Oval Ring**. Bring all 4 cords through the Oval Jump Ring.



## Step 14

**A.** Bring the four cords behind the bracelet just below the Oval Jump Ring. Leave a small loop.



**B.** Bring the 4 cords through the loop you just made. Pull to tighten.



## Step 15

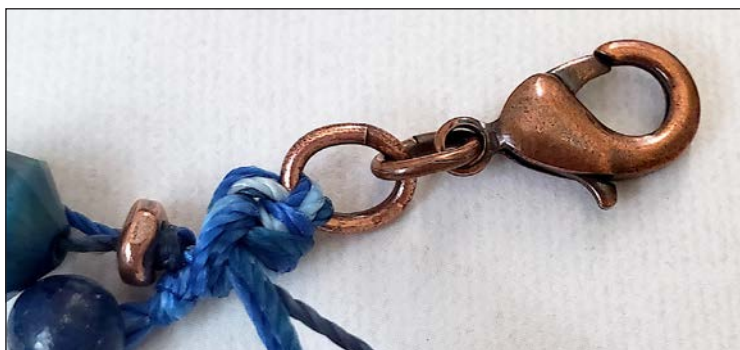
Repeat Step 14 two more times.





## Step 16

Use a **Medium Oval Jump Ring** to attach the **Lobster Claw** to the **Large Oval Jump Ring**.



## Step 17

Add **Beads** to the tails. Tie knots after the Beads. Trim. Add **Glue** to secure.



## Step 18

Use 2 **Medium Oval Jump Rings** to attach the curved side of the **Crescent Chain** to the **Hammered Ring**.



## Step 19

Check length of chain. *Adjust if needed.*

Use 1 **Medium Oval Jump Ring** to attach the other end of the **Crescent Chain** to the **Large Oval Jump Ring**.

