

Knotted Feather Necklace



Knotted Feather Necklace

Materials:

- 1 TierraCast Feather 2" Charm
- 1 TierraCast Hammertone Medium Ring
- 10 Fire Polish
- 25 Stone Heishi
- 10 Stone Round
- 2 Stone Art Deco
- 3-4 inches Crescent Moon Chain
- 2½ feet Leather Cord 2mm
- 2 yards Amiet Cord
- 10 Large Hole Glass
- 14 TierraCast 7mm Large Hole Nuggets
- 2 TierraCast Large Hole Beaded Beads
- 1 TierraCast 5mm Large Hole Small Nugget
- 4 TierraCast 2mm Palace Cord Ends
- 2 Bead Tips
- 3 Large Jump Rings
- 4 Oval Jump Rings

Instructions by Joyce Trowbridge

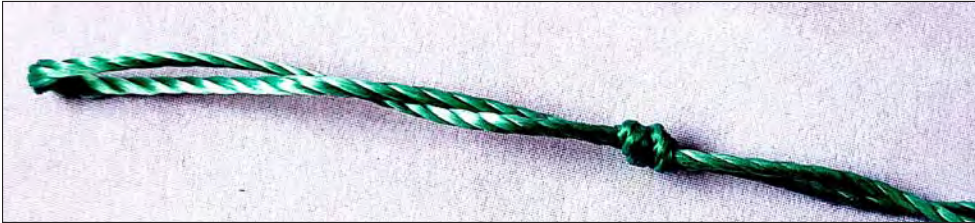
Tools:

- 1 Bead Mat
- 2 Chain Nose Pliers
- 1 Wire Cutter
- 1 Awl or Tweezers
- E600 Glue



Step 1

Fold **Amiet Cord** in half. Tie an overhand knot near the folded end.



Step 2

Onto one cord string

1 Fire Polish, 11 Stone Heishis, 1 Fire Polish, 3 Stone Rounds, 1 Fire Polish, 1 Stone Art Deco, and 1 Fire Polish.



Step 3

String 3 Stone Rounds.



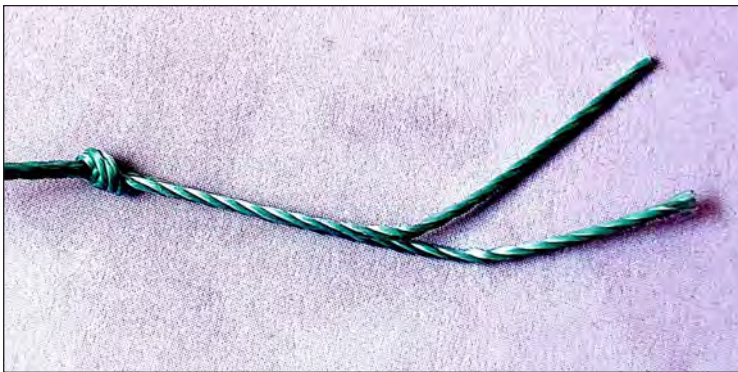
Step 4

String 1 Fire Polish, 11 Stone Heishis, 1 Fire Polish, 3 Stone Rounds, 1 Fire Polish, 1 Stone Art Deco and 1 Fire Polish.



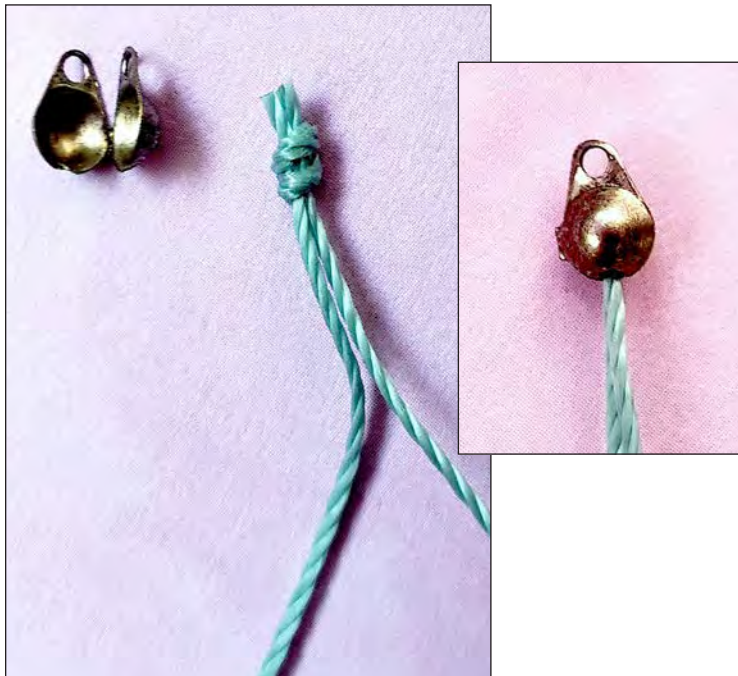
Step 5

Take the two open ends and tie an overhand knot near the end so the beads don't slide off.



Step 6

Trim the loop end off near the knot. Add glue. Place knot into the **Bead Tip**. Close Bead Tip around knot.

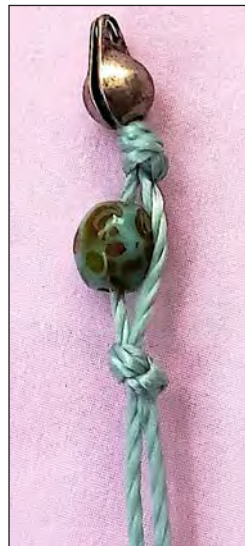


Step 7

With both cords together, tie an overhand knot close to the Bead Tip.



Step 8



Slide up 1 Fire Polish, with both cords together, tie an overhand knot after the Fire Polish. Leave some space for *fun airy-ness*.

Step 9

Slide 1 Stone Heishi up to the last knot. With both cords together tie an overhand knot.



Step 10

Slide 1 Stone Heishi up next to the last knot. With both cords together, tie an overhand knot.



Step 11

Slide 7 Stone Heishis up next to the last knot. With both cords together, tie an overhand knot.



Step 12

Slide 1 Stone Heishi up to the last knot. With both cords together, tie an overhand knot.



Step 13

Slide 1 Stone Heishi up to the last knot. With both cords together, tie an overhand knot.



Step 14

Continue slide one bead up and tying overhand knots for the rest of the strung beads. Use the sequence in Steps 9-13 when you reach the other set of Stone Heishis.



Step 15

Tie a second overhand knot next to the last knot. Trim cord close to second knot. Add glue. Place **Bead Tip** over second knot. Close Bead Tip.



Step 16

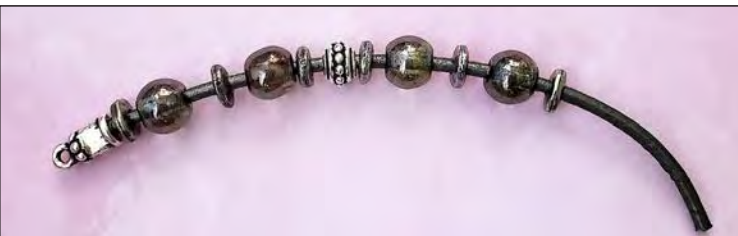
Cut a 4 inch piece of **Leather Cord**. Glue or crimp the **Palace Cord End** on one end of Leather.



Step 17

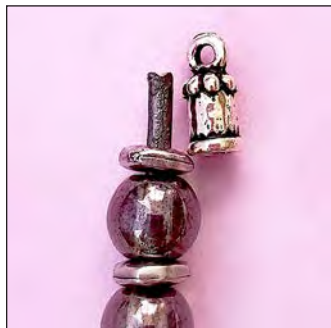
String:

- 1 Large Hole Nugget, 1 Large Hole Glass,
- 1 Large Hole Nugget, 1 Large Hole Glass,
- 1 Large Hole Nugget, 1 Large Hole Beaded Bead,
- 1 Large Hole Nugget, 1 Large Hole Glass,
- 1 Large Hole Nugget, 1 Large Hole Glass, 1 Large Hole Nugget.



Step 18

Trim Leather Cord to about the length of the Palace Cord End.



Step 19

Glue or crimp **Palace Crimp End** onto second side. Make sure the loops of both Palace Cord Ends are facing the same way.



Step 20

Use an **Oval Jump Ring** to attach one loop of the Palace Cord Ends to the Bead Tip on the Stone Heishi Side of the knotted piece.



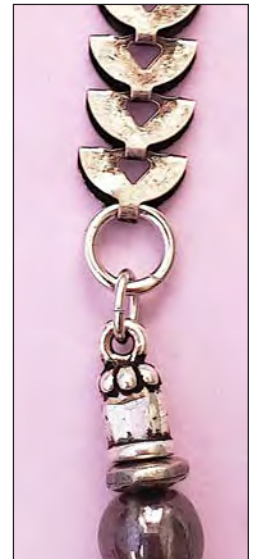
Step 21

Attach 1 **Large Round Jump Ring** to the curved end of the **Crescent Moon Chain**.



Step 22

Use an **Oval Jump Ring** to attach the other Palace Cord End to the Large Round Jump Ring on the Crescent Moon Chain.



Step 23

On one end of the rest of the Leather Cord, Glue or Crimp One Palace Cord End.



Step 24

String 1 Large Hole Nugget, 1 Large Hole Glass, 1 Large Hole Nugget, 1 Large Hole Glass, 1 Large Hole Nugget, 1 Large Hole Beaded Bead, 1 Large Hole Nugget, Large Hole Glass, 1 Large Hole Nugget, Large Hole Glass, 1 Large Hole Nugget, and 1 Large Hole Small Nugget.



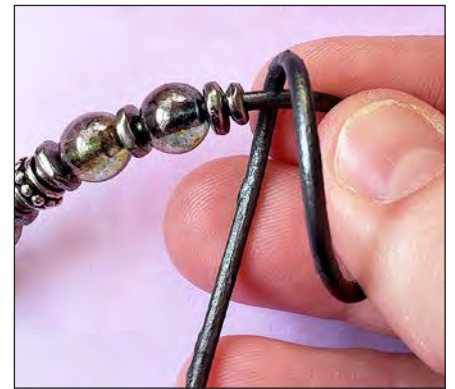
Step 25

Bend Leather Cord down and beneath the strung beads.



Step 26

Holding the folded side, bring Leather Cord up, over and behind the strung bead side.



Step 27

Wrap around a second time...



Step 28

and a third time.



Step 29

Bring end of Leather Cord through the 3 wrap coil, from left to right.



Step 30

Hold onto coils, keeping their shape with left hand while pulling Leather Cord end with right hand.



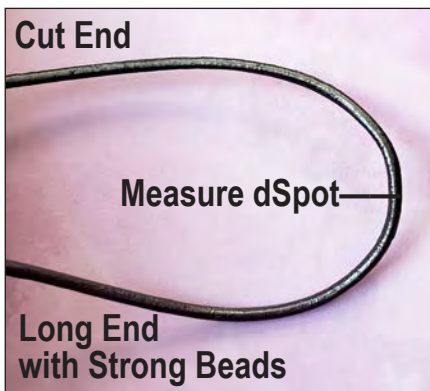
Step 31

Use left hand to keep the coil shape as it gets smaller while pulling the Leather Cord end.



Step 32

Mesasure 12 to 15 inches for length desired. Make a fold at the measured spot, keeping the cut end top and the strung beads behind cut end.



Step 33

Hold the fold end.



Step 34

Wrap the strung bead end around the cut end three times in same fashion as in Steps 27-29.



Step 35

Bring the strung bead end through the three wrap coils.



Step 36

Hold the coil with left hand, keeping it's shape while pulling the strung bead end with right hand.



Pull snug.



Step 37

String
1 Large Hole Nugget,
1 Large Hole Glass, and
1 Large Hole Nugget.



Step 38

Trim Leather Cord about the length of the Palace Cord End. Glue or crimp the **Palace Cord End** onto the Leather Cord.

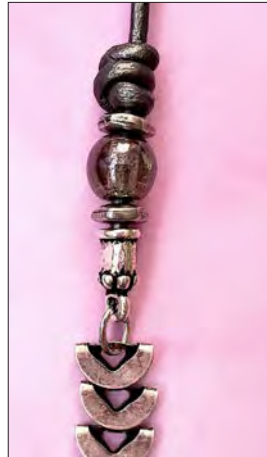


Try to keep the loops of the Palace Cord Ends roughly facing in the same way.



Step 39

Use an **Oval Jump Ring** to attach the top of the **Crescent Moon Chain** to the loop of the Palace Cord End on the side with One large Hold Glass Bead.



Note: May need to adjust the length of Crescent Moon Chain.

Step 40

Use an **Oval Jump Ring** to attach the other Palace Cord End loop to the Bead Tip on the Stone Art Deco Side.



Step 41

Use 1 **Large Round Jump Ring** to attach the **Feather** to the **Hammered Ring**.



Step 42

Find the bottom center of the necklace. Use a **Large Round Jump Ring** to attach the Hammered Ring to the bottom center of the necklace.

