

# Pixie Jewel Loom Bracelet





# Pixie Jewel Loom Bracelet

Instructions by Joyce Trowbridge

## Materials:

- 20 6mm Fire Polish Czech Beads (A)
- 40 6mm Fire Polish Czech Beads (B)
- 30 6mm Fire Polish Czech Beads (C)
- 8 2mm Crimp Tubes
- 2 20mm Slide Connectors
- 2 Medium Oval Jump Rings
- 1 Snap Clasp (or clasp of choice)
- 2 Yards Amiet Cord
- 2 Yards Wildfire (.006" or .008")

## Tools:

- 1 Jewel Loom® (or loom of choice)
- 1 Bead Mat
- 2 Chain Nose Pliers
- 1 Crimper
- 1 10/0 Beading Needle
- 1 Scissors

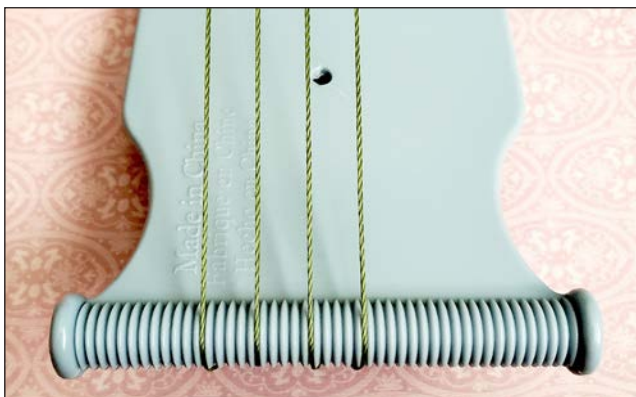


## Step 1

Use **Amiet Cord** to set up the Jewel Loom®, following the directions in the "Instruction Booklet" provided with the loom. Make 4 warps, each spaced four visible grooves apart.

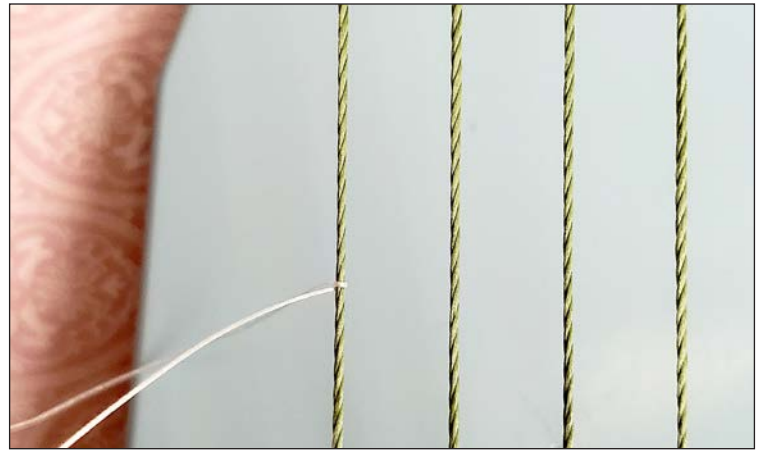


## Close up view of warp spacing



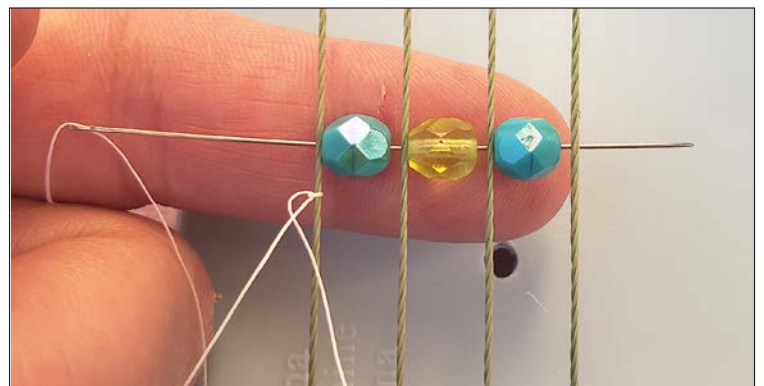
## Step 2

Add a Needle to **2 Yards of Wildfire**. Tie the tail end of the Wildfire with a half knot onto the left most warp cord. Leave about an 8-12 inches of tail on the Wildfire.

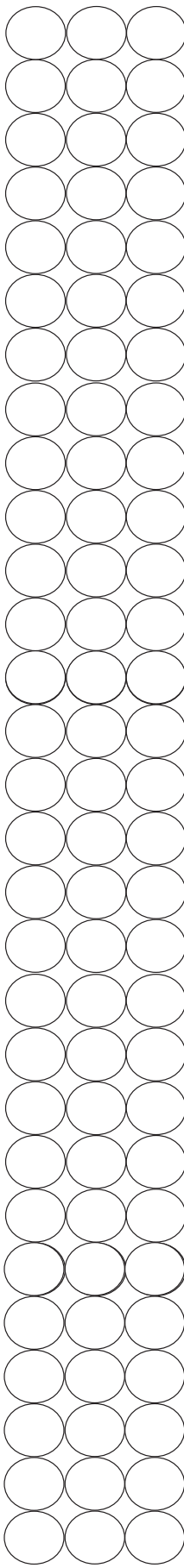
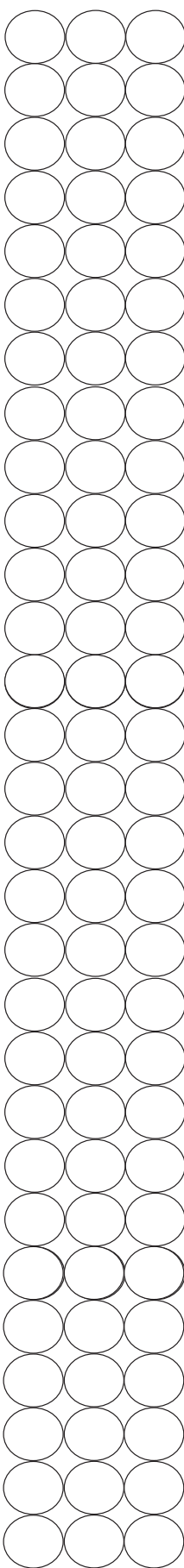
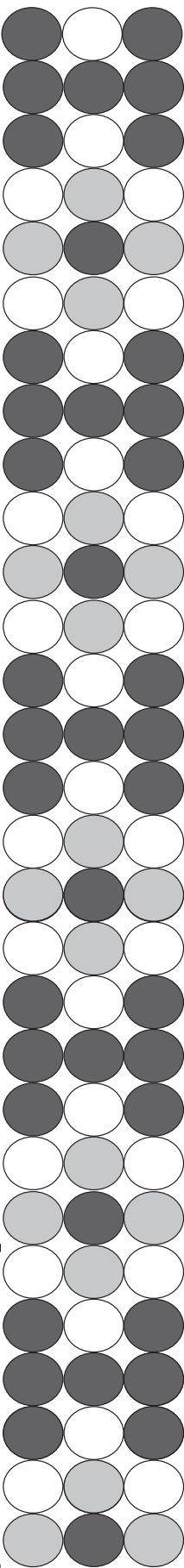
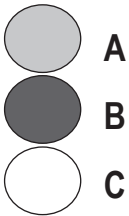


## Step 3

String the first **3 Beads (A,B,A see graph on page 2)** onto the needle. Keeping the 3 Beads on the needle, bring needle (from **left to right**) under the warps. Bring each Bead between the warp cords. Use finger to hold them in place.



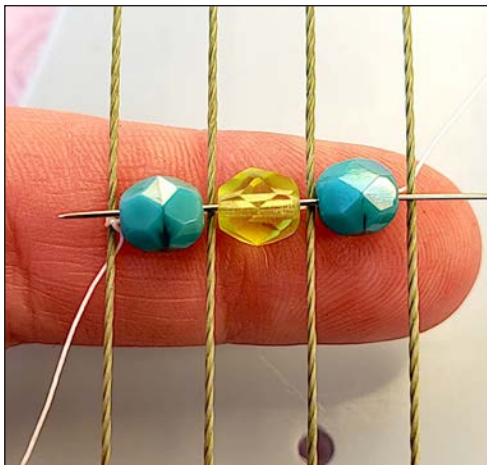
*End on any row  
necessary to complete  
desired length.*



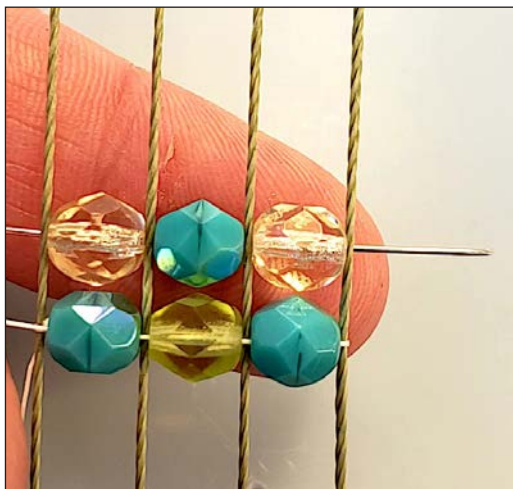


**Step 4**

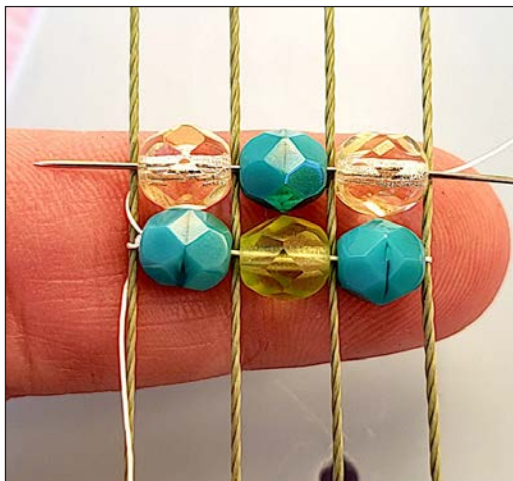
Pull the needle and thread through the three Beads. Keep finger under the beads to keep in place. Bring needle over the warp cords and through the beads going **right to left**.

**Step 5**

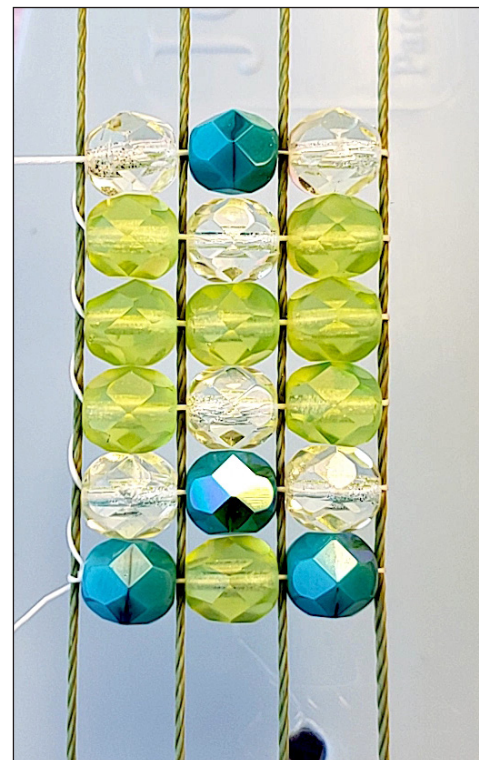
String the next **3 Beads** (see graph on page 2) onto the needle. Keeping the 3 Beads on the needle, bring needle (**from left to right**) under the warps. Bring each Bead between the warp cords. Use finger to hold them in place.

**Step 6**

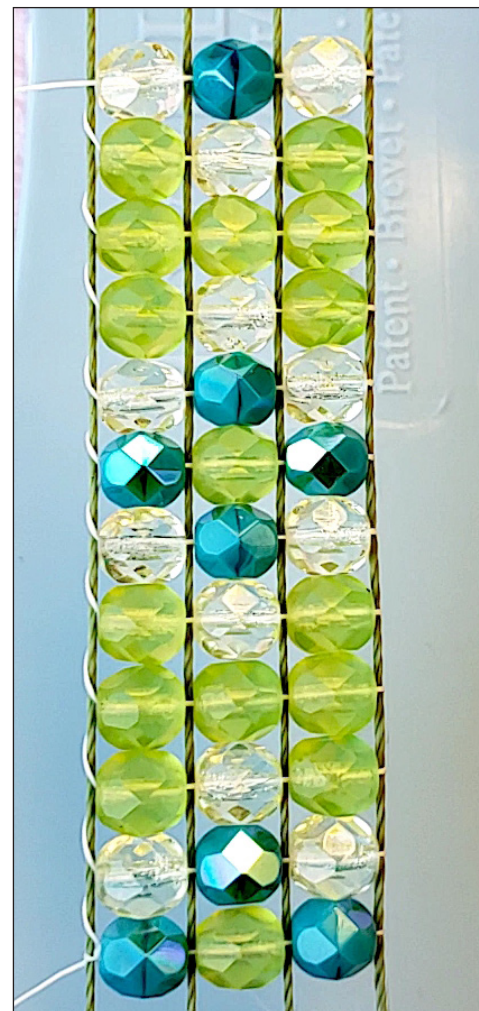
Pull the needle and thread through the three Beads. Keep finger under the beads to keep in place. Bring needle over the warp cords and through the beads going **right to left**.

**Step 7**

Repeat Steps 5 and 6, following the Bead Graph pattern.

**Step 8**

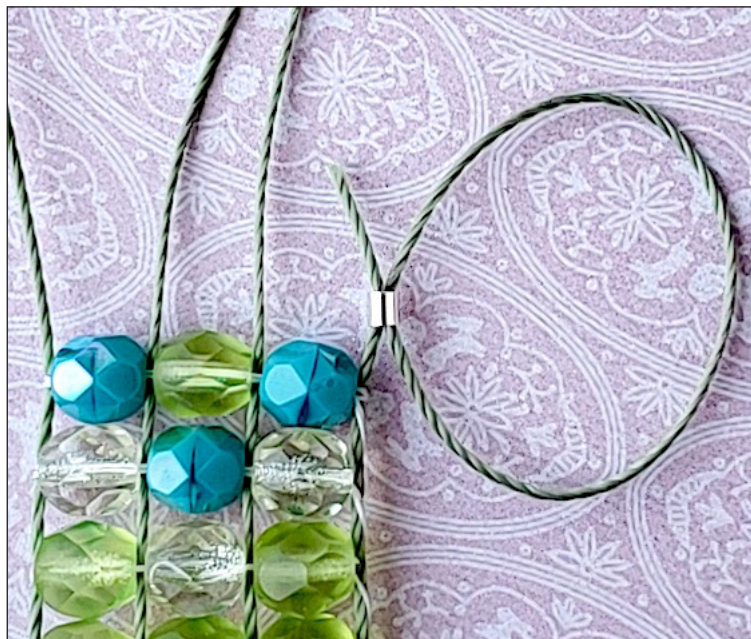
Continue adding beads by *repeating* Steps 5 and 6 following the Graph Pattern.





## Step 9

After adding enough beads for desired length, remove from Jewel Loom. String a **Crimp Tube** onto one warp cord. Bring cord around and back through the Crimp Tube.



## Step 10

Snug the crimp above the last row of beads. Crimp the Crimp Tube using Crimping Pliers.



## Step 11

Repeat Steps 9 and 10 for all four warp cords. Trim cords.



## Step 12

Slide the **Slide Connector** over the crimped crimps.





## Step 13

Close the Slide Connector.



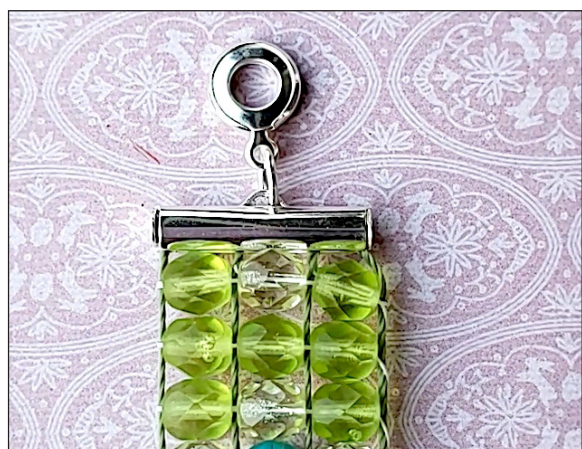
## Step 14

Use an **Oval Jump Ring** to attach one side of the **Clasp** to the Slide Connector.



## Step 15

Repeat Steps 9 through 14 for other side.



## Step 16

Enjoy your new awesome Pixie Jewel Loom Bracelet!

