

# Robin's Nest Necklace





# Robin's Nest Necklace

Instructions by Joyce Trowbridge

## Materials:

- 3 4mm Czech Glass Round Beads
- 1 TierraCast Botanical Branch
- 3 feet 26 gauge Wire
- 4 Medium Oval Jump Rings
- 18 inches TierraCast 2x3mm Cable Chain
- 1 Lobster Claw

## Tools:

- 1 Bead Mat
- 2 Chain Nose Pliers
- 1 Wire Cutters

## Step 1

String 3 4mm Czech Glass Round Beads onto 3 feet of 26 gauge Wire.

Group beads together about 3 inches from one end of the wire.

Twist wire together under the beads.



## Step 2

Bring the long end of the wire around the beads forming a circle around them.



## Step 3

Continue to circle the wire around the beads 5 or 6 more times.



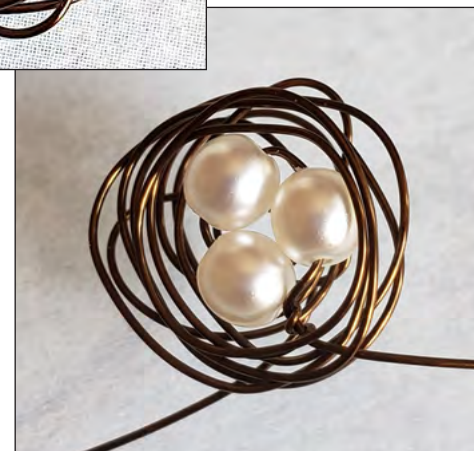
## Step 4

Bring the long wire end to the back and fill in the space behind the beads with smaller circles of wire.



Back

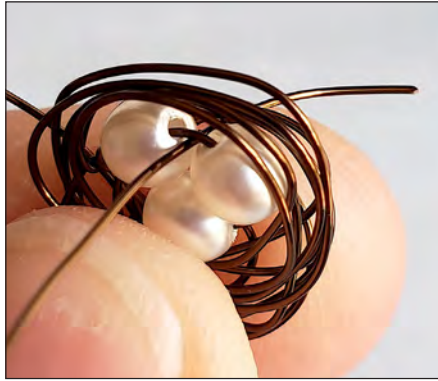
Front





**Step 5**

Start to bind the circles of wires together and connecting them to the beads by taking the long end through the space between the beads, then out to the back side.



**Step 6**

Continue to bind together 2 or 3 more times.



**Step 7**

Repeat Steps 4-6 until your nest is full. Make sure to have the two wire ends exit opposite of each other.



**Step 8**

Position the nest on the Botanical Branch as desired.



**Step 9**

Intertwine and wrap the wires around the Botanical Branch.



**Step 10**

Trim wire ends on the back side of the Botanical Branch. Use Chain Nose Pliers to press the ends close.



**Step 11**

Cut 2 pieces of Chain, each 9 inches long. Attach each end of the Botanical Branch to each piece of Chain with Oval Jump Rings.



**Step 12**

Attach the Lobster Claw to one end of the necklace with an Oval Jump Ring. Attach another Oval Jump Ring to the other end.

