
Spring Bling Wrap Bracelet



Spring Bling Wrap Bracelet

Instructions by Joyce Trowbridge

Materials:

1 TierraCast Button
6-7 inches 3mm Rhinestone Cup Chain
1 gram Size 11 Seed Beads
2 Cup Chain Ends
2 feet 2mm Leather Round Cord
2 yards Wildfire, Fireline or KO Thread

Tools:

Size 10 or 12 Beading Needle
Bead Mat
Chain Nose Pliers
Wire Cutters
Scissors
Washi Tape or Masking Tape
Thread Conditioner or Wax (*optional*)
Clipboard or Macrame Board (*optional*)



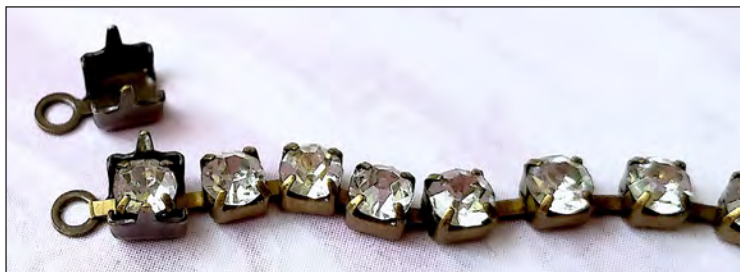
Step 1

String **one Button** onto **Leather Cord**. Slide to center of Leather Cord. Tie an overhand knot near Button. Leave a nice loop for Button to move easily.



Step 2

A. Place the end link of the Cup Chain into the Rhinestone Chain End.



B. Use Chain Nose pliers to secure the prongs of the Rhinestone Chain End around the Cup Chain.



Step 3

Tie one end of the thread onto the loop of the Rhinestone Chain End. Leave about a 6-8 inch tail. Add needle to other end of thread.



Step 4

Place the Rhinestone Chain End under and between the Leather Cords near the knot. Use Washi Tape to keep the tail of thread out of the way (*attach to Button*). Use another piece of Washi Tape to keep the Cup Chain between the Leather.



Step 5

Bring needle from back to front of the first Leather Cord, then down through the loop of Rhinestone Chain End. Go under the second Leather Cord in a downward motion.

**Step 6**

Bring needle from back to front of the Leather Cord, then down through the loop of Rhinestone Chain End and under next Leather Cord in an upward motion.

**Step 7**

Repeat Steps 5 & 6 to Reinforce.

**Step 8**

A. String **one 11/0 Seed Bead**. Take needle downwards, over Top Cord, and under Bottom Cord. Let the 11/0 Seed Bead rest on top of the loop of Rhinestone Chain End and between the Cords.



B. Take needle upwards, over Bottom Cord, through Bead, and under the Top Cord.



C. Pull snug.

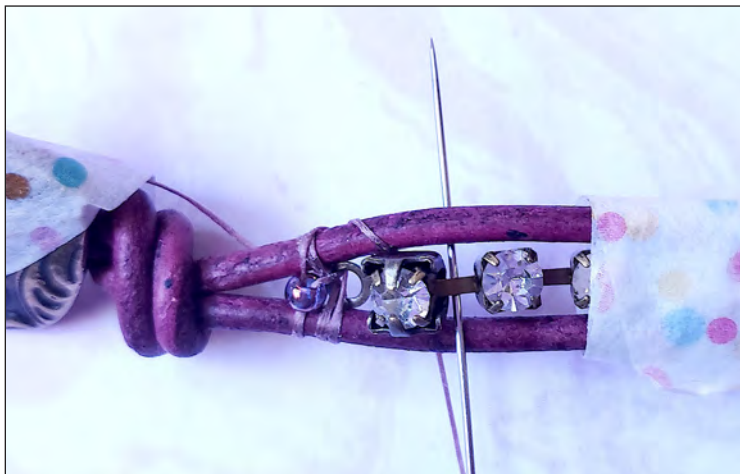


Step 9

A. Skipping the next Cup Link in the Chain, take needle downwards, over the Top Cord, then under Chain and Bottom Cord.



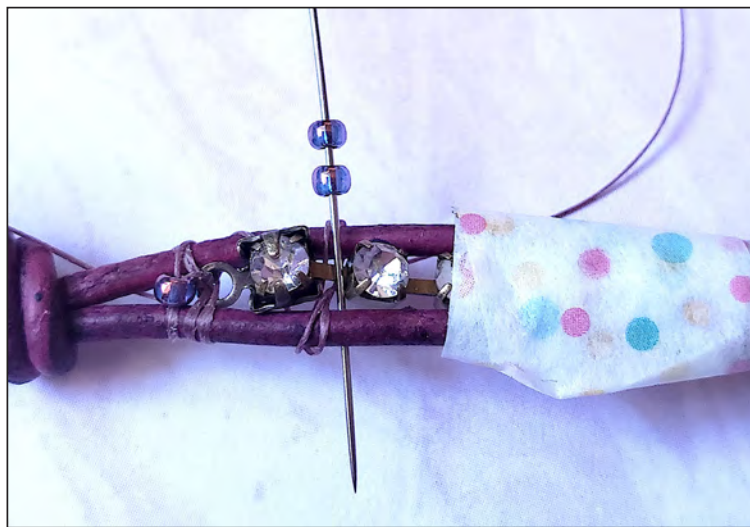
B. Take needle upwards, over Bottom Cord, the under both the Chain and Top Cord. Repeat A and B to reinforce if desired.



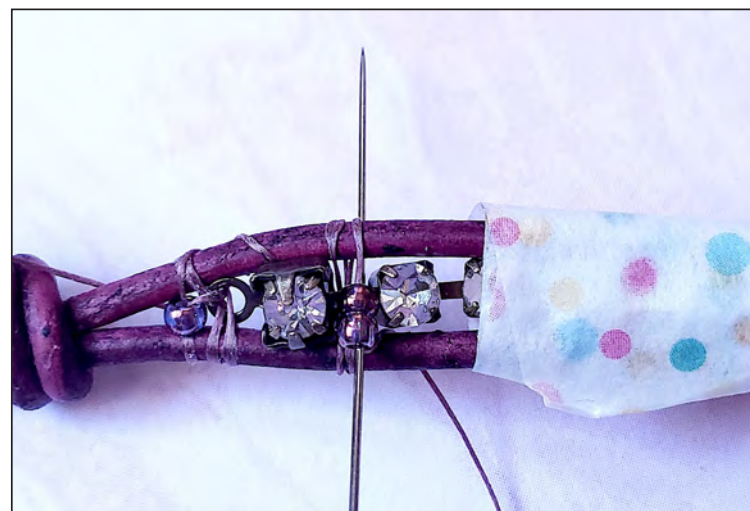
Note: Reinforcing is shown in photos.
If not reinforcing, there will show less thread passes around Leather Cord and behind Cup Chain.

Step 10

A. String 2 11/0 Seed Beads. Take needle downwards, over Top Cord and Chain, then under Bottom Cord.



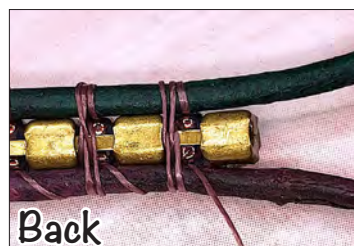
B. Take needle upwards, over Bottom Cord, through the 2 11/0 Seed Beads, and under Top Cord.

**Step 11**

Continue adding 11/0 Seed Beads and securing the Cup Chain between the Leather Cords by repeating Steps 9 and 10 for desired length.



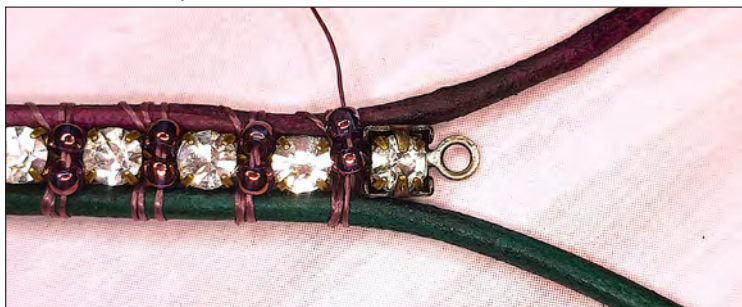
This is what it should look like from the back.



Back

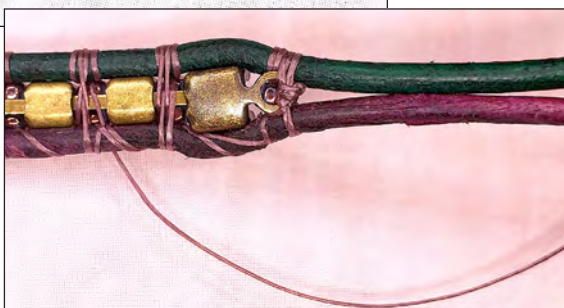
Step 12

Attach a Rhinestone Chain End on to the last link of the Cup Chain as in Step 2.

**Step 13**

Secure the loop of the Rhinestone Chain End and add **One 11/0 Seed Bead** by repeating Steps 5-8.

Tie Half Hitch Knots and weave thread into bracelet. Trim the ends.

**Step 14**

Weave in tail. Trim thread.

**Step 15**

Tie an Overhand Knot with the leather cords, near the last link of the Cup Chain.

**Step 16**

Tie another Overhand Knot, leaving enough space for the Button to fit through.

