

# Timeless Tree of Life Pendant





# Timeless Tree of Life Pendant

Instructions by Joyce Trowbridge

## Materials:

- 1 TierraCast Hammertone 1.25 inch Ring
- > 4 inches Gemstone Chips
- 7 feet of 26 gauge Wire
- 1 Jump Ring

## Tools:

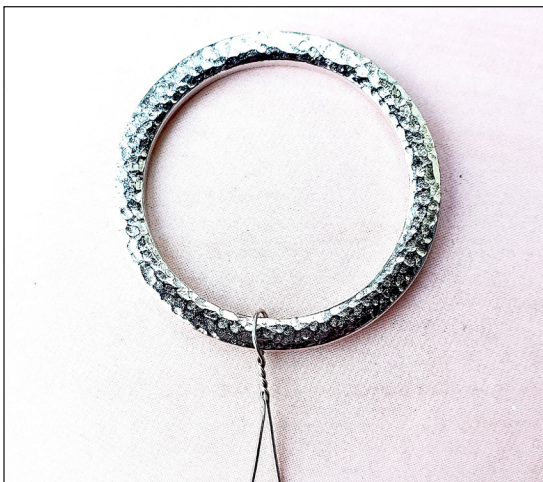
- 1 Bead Mat
- 2 Chain Nose Pliers
- 1 Round Nose Pliers
- 1 Wire Cutters



## Step 1

Cut **7 pieces of Wire**, 9 inches long.

Take **one piece of Wire** and fold around the **Hammertone Ring**. Make sure fold is at the center of wire. Twist wire a couple times to secure, but not too tight.



## Step 2

Attach all seven wires in the same way.



## Step 3

Rotate wires so they are up and in front of Ring.





**Step 4**

**A.** Twist all wires together pretty tightly to start the trunk of the tree.



**B.** Loosen twisted part of wire to make trunk thicker looking, if desired.

**Step 5**

**A.** Loosen up the wires above the trunk to start branches.

Let some wires stay together to make thick branches.

Spread out twisted wire roots a little.



**B.** Twist some wires together to form the thick branches.





**Step 6**

Add **several Gemstone Chips** on to a single wire for leaves. Wrap wire around Hammertone Ring 2 times. Wrap thick branches with no gemstones added around Ring. Treat the gathered wires as one.

Continue adding gemstones to single wires and thick branch wires around Hammertone Ring to form tree.  
(See photo at end of instructions for other thick branch and leaf





**Step 7**

**A.** When tree is formed turn piece over to work on back of pendant. Wrap any wires that need better securing. Bring all wires down this back side.



**B.** Trim wire close to Hammered Ring. Press in ends with Chain nose pliers

**Step 8**

Use chain nose or round nose pliers to add kinks and snarls in the branches and roots, if desired.

**Step 9**

Use two chain nose pliers to attach a **Jump Ring** on top. Add your favorite chain or leather cord to wear. (not shown)





