

Travelling Cable Accessories

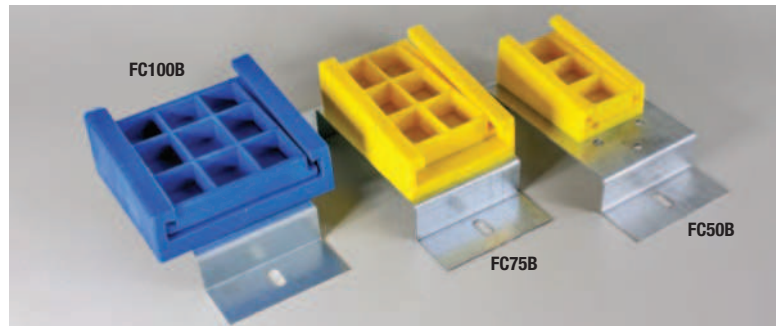
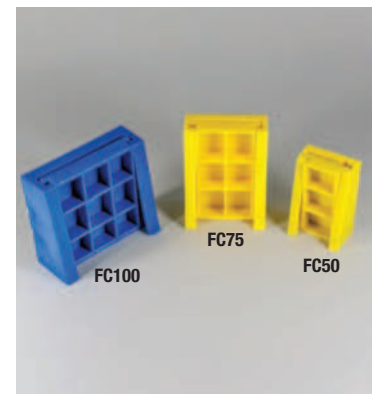
Wedge Clamps For Flat Travelling Cable

Flat wedge clamps are made from durable moulded nylon and consist of a bracket that attaches to the shaft wall (or the lift car) and a clamping wedge that secures the cable in the bracket.

They are designed to support up to **three cables** totalling a maximum thickness of **15mm**. If multiple cables are being used, the **narrowest cable width must not be less than 70% of the widest cable**. Flat wedge clamps are also available with a “top hat” stand-off bracket, offering more flexible fixing options.

The wall mounted steel suspension device is specifically designed for the installation of high rise travelling cables. The cables affixes to the suspension device in a ‘looped’ by means of its own steel wire support ropes.

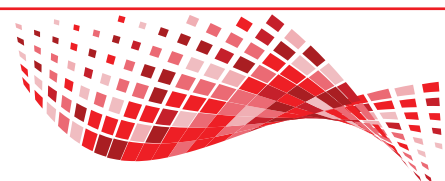
Order Code	Description	Dimensions LxWxH (mm)
FC50	2” (50mm) Flat Wedge Clamp	100 x 60 x 45
FC75	3” (75mm) Flat Wedge Clamp	120 x 90 x 50
FC100	4” (100mm) Flat Wedge Clamp	115 x 130 x 54
FC50B	2” (50mm) Flat Wedge Affixed to Stand-Off Bracket	230 x 65 x 75
FC75B	3” (75mm) Flat Wedge Clamp Affixed to Stand-Off Bracket	230 x 93 x 80
FC100B	4” (100mm) Flat Wedge Clamp Affixed to Stand-Off Bracket	230 x 130 x 84
LZ4001	Suspension Device for High Rise Travelling Cables	220 x 170 WxH

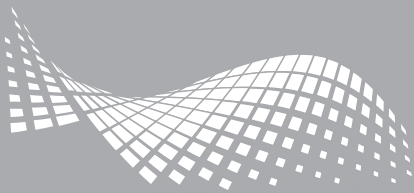


Termination Glands For Flat Travelling Cable

Flat cable glands offer a simple and neat solution for terminating flat travelling cable into a terminal box or control panel. They consist of two parts, which are separated to enable the single wires of the flat trailing cable to be fed through the gland hole. The oval gasket is then placed over the trailing flex to create an IP65 seal prior to the two parts of the gland being re-assembled. The gland can then be fitted to a terminal box, connection box or control panel.

Order Code	Description	Frame Dimensions LxHxW (mm)	Entry Dimensions LxH (mm)
FCE6	Flat Cable 6 Way Entry	73 x 39 x 18.9	19-23 x 5.5-6
FCE12	Flat Cable 12 Way Entry	98 x 39 x 18.9	32.5-38 x 5.5-6
FCE18	Flat Cable 18 Way Entry	120 x 39 x 18.9	49-54 x 5.5-6
FCE24	Flat Cable 24 Way Entry	147 x 39 x 18.9	72.77 x 5.5-6



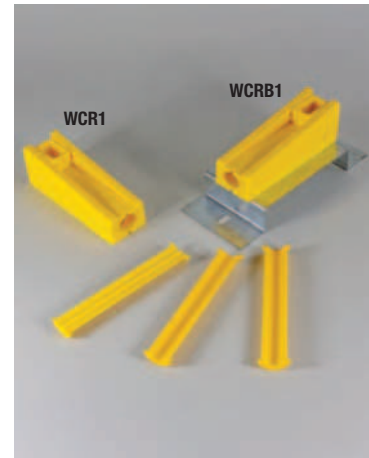


Travelling Cable Accessories

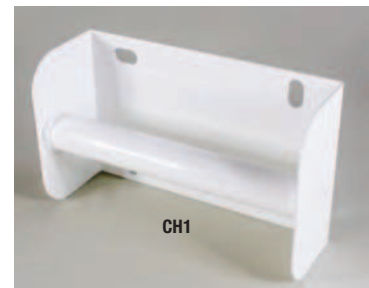
Wedge Clamps and Cable Hangers For Round Travelling Cable

Round wedge clamps are made from durable moulded nylon and will accept any round travelling cable up to a maximum diameter of 25mm or 48 way. They are supplied complete with removable internal fillets, enabling smaller diameter cables to be secured. Round wedge clamps are also available with a "top hat" stand-off bracket offering more flexible fixing options.

The cable hanger highlighted offers a further support option for both round and flat travelling cables.



Order Code	Description	Dimensions LxWxH (mm)
WCR1	Round Wedge Clamp	150 x 50 x 52
WCRB1	Round Wedge Clamp Affixed to Stand-Off Bracket	225 x 90 x 80
CH1	Cable Hanger For Round (Or Flat) Travelling Cable	220 x 75 x 140



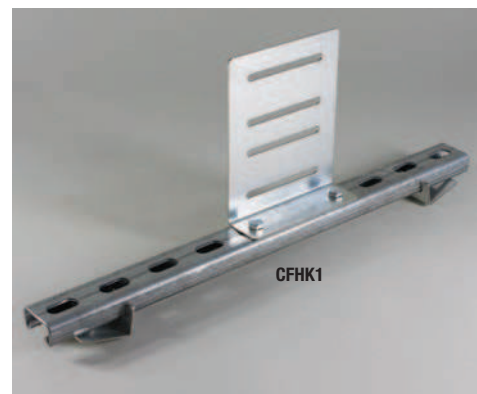
Flex Hanger Bracket and Car Flex Hanger Kit

The flex hanger bracket accepts any flat or round wedge clamp, including those with stand-off brackets, offering a quick and simple wall fixing option.

The car flex hanger kit consists of a flex hanger bracket which is affixed to a 500mm length of shallow, slotted channel. This contains two 'L' shaped brackets which enable simple fixing to the bottom of the lift car.

The car flex hanger kit will accept any flat or round wedge clamp, including those with 'top hat' stand-off brackets.

Please note that both the flex hanger bracket and the car flex hanger kit are NOT supplied with wedge clamps, so please remember to order these separately.



Order Code	Description	Dimensions LxWxH (mm)
FHB1	Flex Hanger Bracket	60 x 125 x 50
CFHK1	Car Flex Hanger Kit	180 x 500 x 50

Note: Wedge clamp is not included, so please order separately.



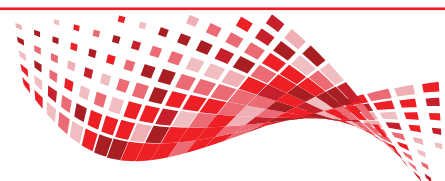
020 8507 1001

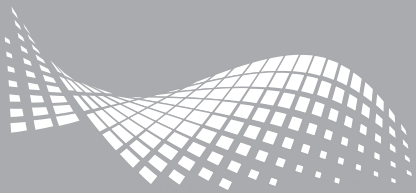


www.pewelectrical.com



sales@pewelectrical.com



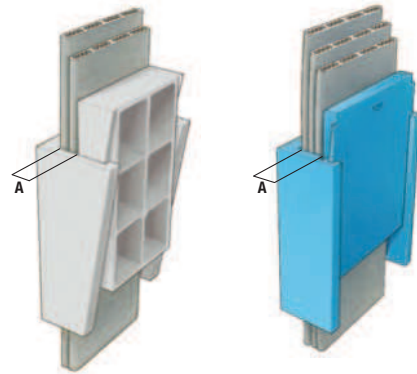


Installation of Wedge Clamps for Low Rise and Medium Rise Cables

1. Maximum Clamping Thickness of Wedge Clamp

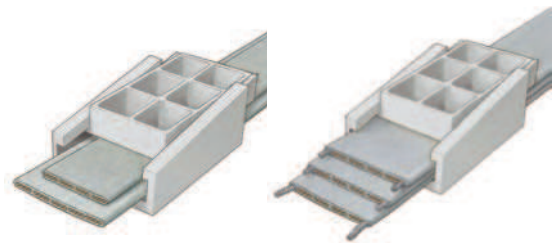
Wedge clamps are designed to support a maximum of 3 cables.

Wedge Clamp	Clamping Range A (mm)	Width of Cable
FC50	3-12mm	≤ 55mm
FC75	3-15mm	≤ 56-79mm
FC100	3-22mm	≤ 80-100mm



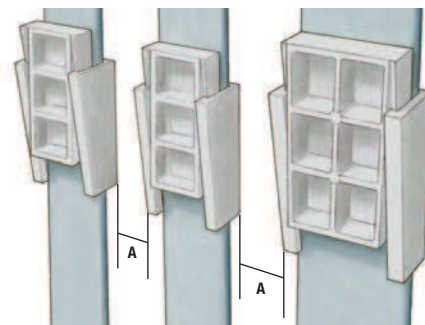
2. Permitted Cable Combinations

Wedge Clamp	Permitted Cable Combinations
FC50	Maximum 3 cables, with narrowest cable being no less than 70% of widest cable
FC75 & FC100	Maximum 3 cables, with narrowest cable being no less than 70% of widest cable



3. Fixing Several Adjacent Suspension Devices

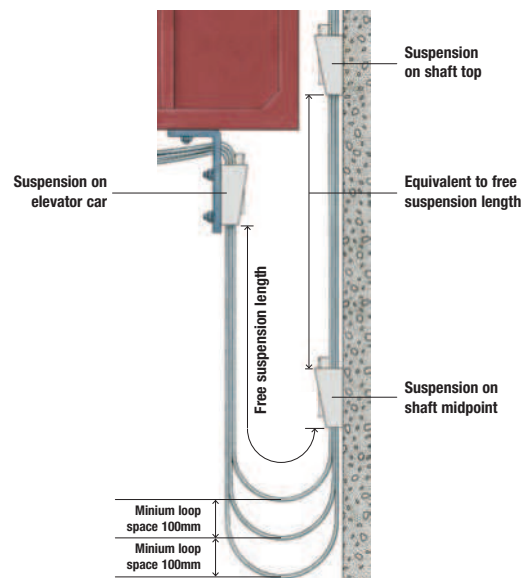
Spacing 'A' must be a minimum of 50mm.



4. Installation Positions of Suspension Devices

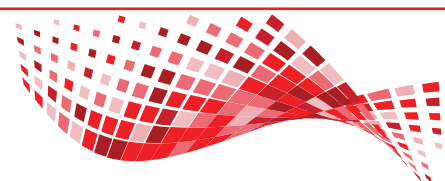
A third wedge clamp is required at shaft midpoint if the actual **travelling height** is greater than the **free suspension length**.

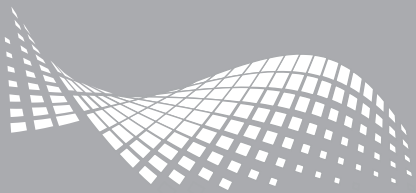
	Medium Rise Cables	High Rise Cables
Max travel height	80 metres / 260 feet	150 metres / 490 feet
Max free suspension length	45 metres / 150 feet	80 metres / 260 feet



5. Minimum Loop Spacing for Cable Combination

Distance between loops should be a minimum of 100mm, with the thinnest cable on top and the thickest cable underneath it.



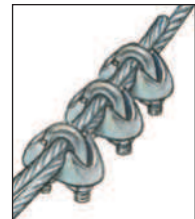
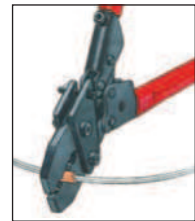


Installation of Suspension Device for High Rise Travelling Cables

1. Forming a Loop

Draw other end of steel wire rope through second sleeve, using tape for parallel fixation.

An alternative to crimping sleeves is to place 3 x Crosby clips (G-450) each side of the loop, or use cable grips according to DIN 1142.

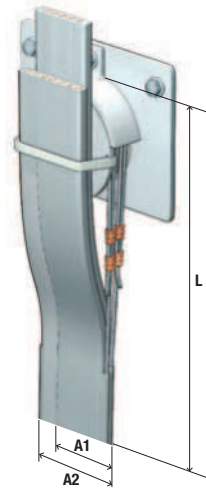


2. Preparation for Cable Installation

A1/A2 = Spacing distance between steel wire ropes.

$A1 \leq 50\text{mm} = L \text{ min } 500\text{mm}$

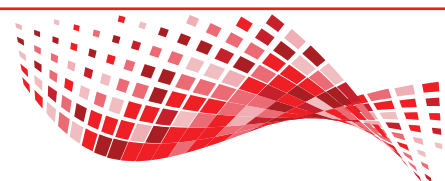
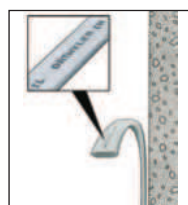
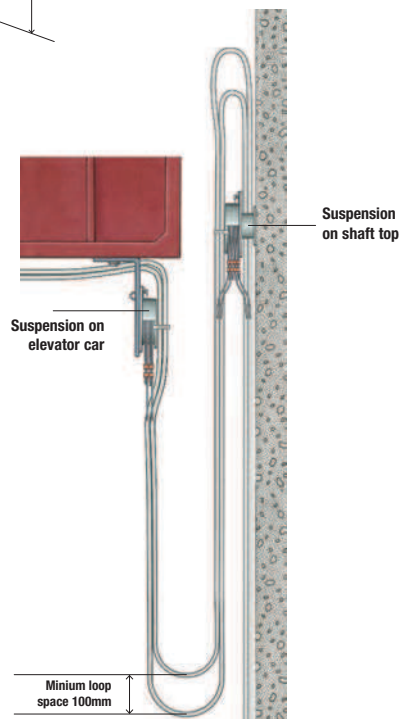
$A2 \geq 50\text{mm} = L \text{ min } 300\text{mm}$



3. Installation Position of Suspension Device for High Rise Travelling Cables

A third suspension device is required at shaft midpoint (not shown) if the actual travelling height is greater than the free suspension length.

High Rise Cables
Max travel height = 400 metres / 1312 feet
Max free suspension length = 220 metres / 722 feet



Cable Accessories

PVC Cable Cleats

One piece polyethylene cleats take a single bolt fixing for cables up to 50mm in diameter. They are suitable for both indoor and outdoor use and can be used in conjunction with metals and other material without electrolytic or chemical reaction. PVC cable cleats are widely used for securing Steel Wired Armoured (SWA) cables.

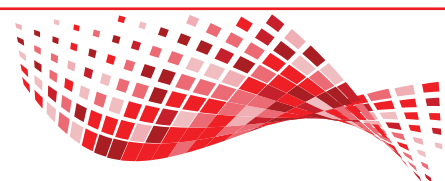
Order Code	Description	Order Code	Description
NP5	12.7mm Diameter Cleat	NP11	27.7mm Diameter Cleat
NP6	15.2mm Diameter Cleat	NP12	30.4mm Diameter Cleat
NP7	17.8mm Diameter Cleat	NP14	35.6mm Diameter Cleat
NP8	20.3mm Diameter Cleat	NP16	40.6mm Diameter Cleat
NP9	22.8mm Diameter Cleat	NP18	45.7mm Diameter Cleat
NP10	25.4mm Diameter Cleat	NP20	50.8mm Diameter Cleat

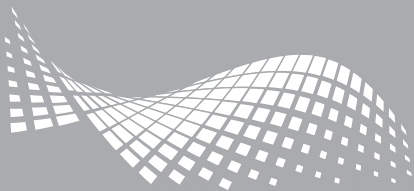


2 Part Cable Cleats

2 part cable cleats are designed to secure very large power cables between 50mm and 105mm in diameter. They can also be used to fix hydraulic hoses and pipes.

Order Code	Description
TC9	Two Part Fixing Cleat 50-57mm Diameter
TC10	Two Part Fixing Cleat 57-64mm Diameter
TC11	Two Part Fixing Cleat 64-70mm Diameter
TC12	Two Part Fixing Cleat 70-76mm Diameter
TC14	Two Part Fixing Cleat 76-85mm Diameter
TC15	Two Part Fixing Cleat 82-105mm Diameter





Cable Accessories

P Clips For Flexible Conduit And Cable

P Clips are manufactured from plated steel with a PVC insert. They are suitable for fixing both flexible conduits and cables, with intermediate sizes being accommodated by removing the PVC insert.

Order Code	Description	Fixing Hole Diameter (mm)	Pack Quantity
PC10	10mm Diameter P Clip	5	10
PC12	12mm Diameter P Clip	5	10
PC16	16mm Diameter P Clip	5	10
PC20	20mm Diameter P Clip	5	10
PC25	25mm Diameter P Clip	5	10
PC32	32mm Diameter P Clip	5	10
PC40	40mm Diameter P Clip	12	5
PC50	50mm Diameter P Clip	12	5
PC63	63mm Diameter P Clip	12	5



Mineral Insulated PVC Coated Cable Clips

Although these clips are suitable for fixing most types of cable, their LSOH properties make them ideal for fire rated cables.

Order Code	Description	Box Qty
RCHL32	PVC Coated MI Clip Max Diameter 8.0mm	50
RCHL34	PVC Coated MI Clip Max Diameter 8.5mm	50
RCHL37	PVC Coated MI Clip Max Diameter 9.0mm	50
RCHL40	PVC Coated MI Clip Max Diameter 9.5mm	50

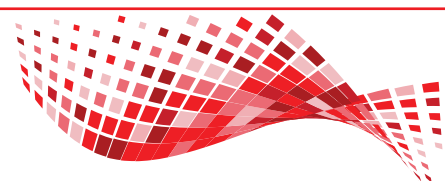
Note: PVC coated clips are available in Black (BLK), Red (RED) and White (WHI).

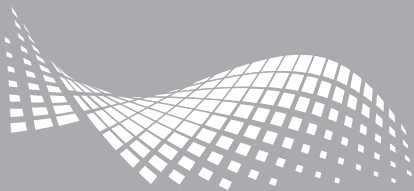


Spiral Binding

Spiral binding offers a simple and fast method of binding and protecting cable looms prior to installation or in situ. It enables cables to be directed from any point and will follow any route taken by the cable.

Order Code	Description	Pack Qty (mts)
1NFP	Spiral Binding For Looms 1.6-3.2mm Diameter	30
2NFP	Spiral Binding For Looms 4.8-8.2mm Diameter	30
3NFP	Spiral Binding For Looms 9.5-19.2mm Diameter	30



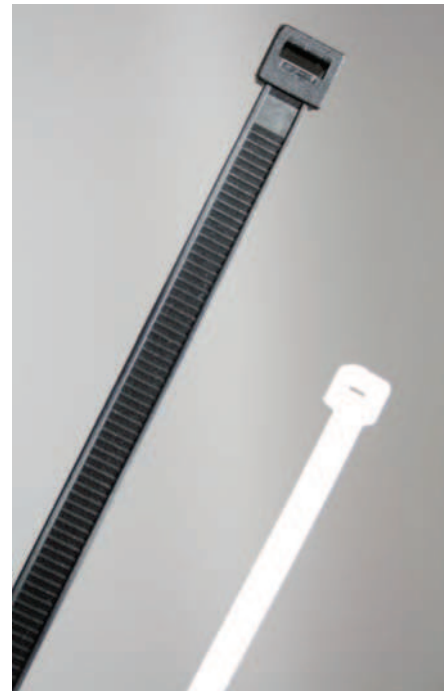


Cable Accessories

Nylon Cable Ties

Nylon cable ties are inert to fungus and mould and are resistant to petrol, oil, grease and alkalis. They are self-extinguishing to U.L.94V2 and can be tensioned by hand. They are supplied in bags of 100.

Order Code	Description
7045N	100 x 2.5mm White Cable Ties (Bag 100)
7045B	100 x 2.5mm Black Cable Ties (Bag 100)
7047N	160 x 4.5mm White Cable Ties (Bag 100)
7047B	160 x 4.5mm Black Cable Ties (Bag 100)
7048N	200 x 4.8mm White Cable Ties (Bag 100)
7048B	200 x 4.8mm Black Cable Ties (Bag 100)
7051N	370 x 4.8mm White Cable Ties (Bag 100)
7051B	370 x 4.8mm Black Cable Ties (Bag 100)
7056N	300 x 4.8mm White Cable Ties (Bag 100)
7056B	300 x 4.8mm Black Cable Ties (Bag 100)
7058N	370 x 7.6mm White Cable Ties (Bag 100)
7058B	370 x 7.6mm Black Cable Ties (Bag 100)



Stainless Steel Cable Ties

Stainless Steel cable ties are an ideal alternative when nylon ties are not suitable. They have excellent resistance to abrasion, corrosion, radiation, weathering and extremes of temperature. Also, they have a greater load carrying capacity and may be used for general strapping applications. They are supplied in bags of 100.

Order Code	Description
SRBT30S	150 x 4.6mm (6") S/Steel Cable Ties (Bag 100)
SRBT50S	225 x 4.6mm (9") S/Steel Cable Ties (Bag 100)
SRBT100S	360 x 4.6mm (14") S/Steel Cable Ties (Bag 100)
SRBT115S	520 x 4.6mm (20") S/Steel Cable Ties (Bag 100)
DSTG2	Application Tool



LSZH (Low Smoke Zero Halogen) Cable Ties

Order Code: **1783B**

These are made from a self-extinguishing, V0:UL94 halogen-free, fire proof material. Measuring 300mm long and 4.6mm wide and supplied in a bag of 100, these multi-toothed ratchet cable ties enable strong locking and a high tensile strength. These cable ties have been tested and are approved for use on London Underground projects.

Ideal for use in both demanding environments and general applications where limited fire hazard properties are required, such as public buildings, factories, offshore, railway stations and the underground.



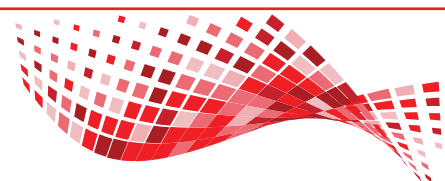
020 8507 1001



www.pewelectrical.com



sales@pewelectrical.com



Cable Accessories

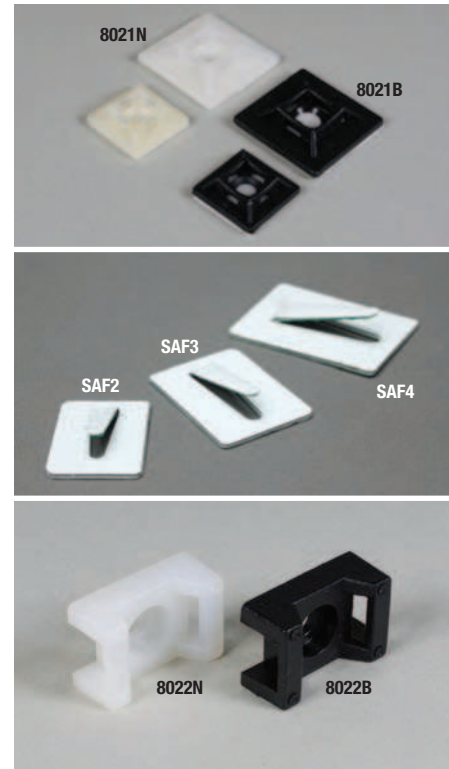
Self Adhesive Mounts and Cable Tie Cradles

Self adhesive cable tie bases are available in two sizes, either 19x19mm or 27x27mm and in either black or white. They are supplied in bags of 100.

Available in white only, self adhesive clips are suitable for routing cables inside cabinets or racks. These clips can be used to support cables ties or the cable itself. They are ideal for noise sensitive work areas, like hospitals or libraries and can be used on both steel and plastic surfaces. These clips are supplied in bags of 100.

Cable tie cradles hold cable ties firmly in place, increasing both their resistance and resilience. Supplied with holes for fixing screws, cable tie cradles are available in either black and white and are supplied in bags of 100.

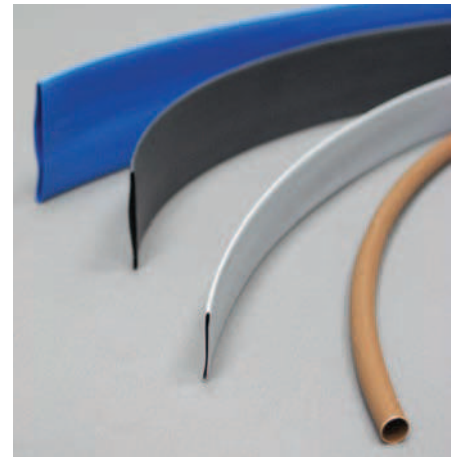
Order Code	Description
8020N	Self Adhesive White Cable Tie Base 19 x 19mm
8020B	Self Adhesive Black Cable Tie Base 19 x 19mm
8021N	Self Adhesive White Cable Tie Base 27 x 27mm
8021B	Self Adhesive Black Cable Tie Base 27 x 27mm
SAF2	Self Adhesive Clip - 8mm Diameter Cable
SAF3	Self Adhesive Clip - 12mm Diameter Cable
SAF4	Self Adhesive Clip - 16mm Diameter Cable
8022N	White Cable Tie Cradle
8022B	Black Cable Tie Cradle



Heat Shrink Sleeving

Heat shrink sleeving is suitable for general insulation, cable marking and colour coding. It has a shrink ratio of 2:1 and will operate between temperatures of -55 to +135°C. Each pack contains 4 colours, brown, blue, black and grey.

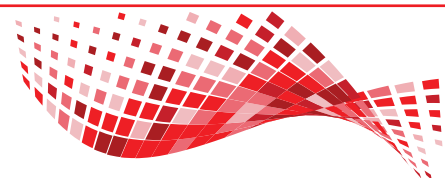
Order Code	Pre-Shrink Dia (mm)	Post-Shrink Dia (mm)	Lengths Per Pack (250mm)			
			Brown	Blue	Black	Grey
HSK3	3.2	1.6	3	3	3	3
HSK6	6.4	3.2	3	3	3	3
HSK12	12.8	6.4	3	3	3	3
HSK19	19.0	9.5	2	2	2	2
HSK25	25.0	12.5	2	2	2	2

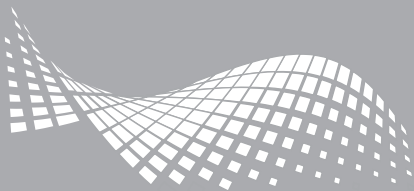


Nylon Cable Tie Fixings

Cable tie masonry mounts are screwed into a 6mm diameter hole and then the tie is fed through the aperture in the screw head. Cable tie fixings with rawlplug and fixing pin work by inserting a two part rawlplug into a pre-drilled hole and then securing it by hammering in the fixing pin, thus leaving a wall mounted cable tie facility. Both of the above are supplied in bags of 100.

Order Code	Description
CTMM1	Cable Tie Masonry Mount
CTS200	Cable Tie Fixing With Rawlplug And Fixing Pin





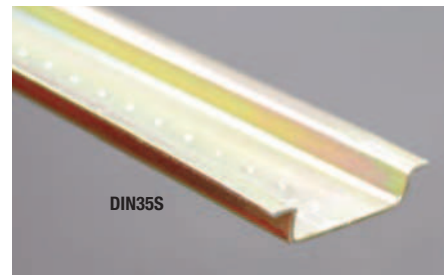
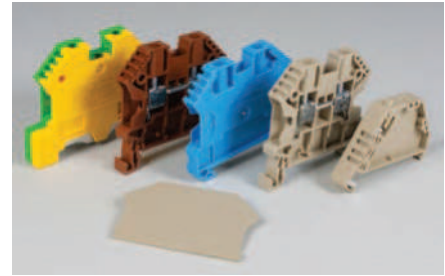
Cable Accessories

Din Rail, Terminals And Accessories

Our range of Din Rail terminals are made from unbreakable high strength Polyamide 6.6 and are flame retardant up to UL94V-2.They conform to IEC947-7-1.

Order Code	Description
DIN35S	Slotted 'Top Hat' Din Rail - 2mts
DTB4GREY	Din Rail Terminal 4.0mm Grey
DTB4BLUE	Din Rail Terminal 4.0mm Blue
DTB4EARTH	Din Rail Terminal 4.0mm Earth
DTB4BRN	Din Rail Terminal 4.0mm Brown
DTB4EC	Din Rail Terminal End Cap 4.0mm
DTB2.5ES	End Of Rail End Stop Grey

Note: Din Rail terminals to fit larger cable sizes of up to 95mm are available to order.



Din Rail Terminal Markers

Din Rail terminal markers are available in strips of 10, as detailed below.

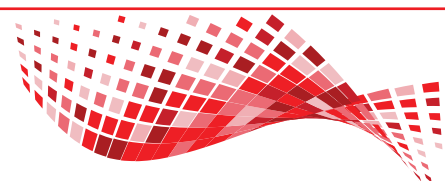
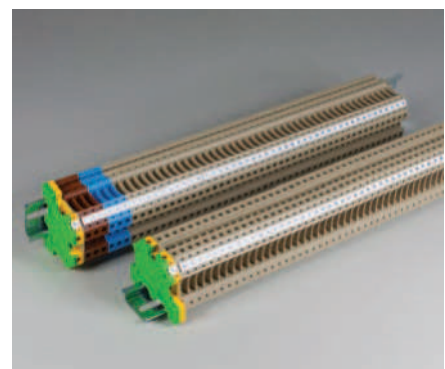
Order Code	Description
DTBMBLANK	Strip of 10 Blank Din Rail Markers
DTBM110	Strip of 10 Din Rail Terminal Markers Numbered 1-10
DTBM1120	Strip of 10 Din Rail Terminal Markers Numbered 11-20
DTBM2130	Strip of 10 Din Rail Terminal Markers Numbered 21-30
DTBM3140	Strip of 10 Din Rail Terminal Markers Numbered 31-40
DTBM4150	Strip of 10 Din Rail Terminal Markers Numbered 41-50
DTBM5160	Strip of 10 Din Rail Terminal Markers Numbered 51-60
DTBM6170	Strip of 10 Din Rail Terminal Markers Numbered 61-70
DTBM7180	Strip of 10 Din Rail Terminal Markers Numbered 71-80
DTBM8190	Strip of 10 Din Rail Terminal Markers Numbered 81-90
DTBM91100	Strip of 10 Din Rail Terminal Markers Numbered 91-100
DTBM/KT	Complete Set Of 10 Strips (1-10 to 91-100)

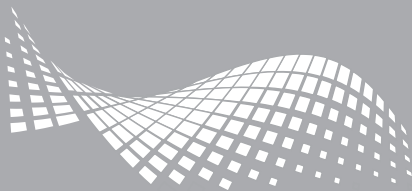


Din Rail Terminal Block Kit

The Din Rail terminal block kit consists of two 300mm lengths of rail, each with fifty numbered terminals, 1-49 and 50-100. The kit is designed for use in areas where space prohibits the use of a standard half way box enclosure.

Order Code	Description
DTBK	Din Rail Terminal Block Kit





Cable Accessories

Armoured Cable Gland Packs

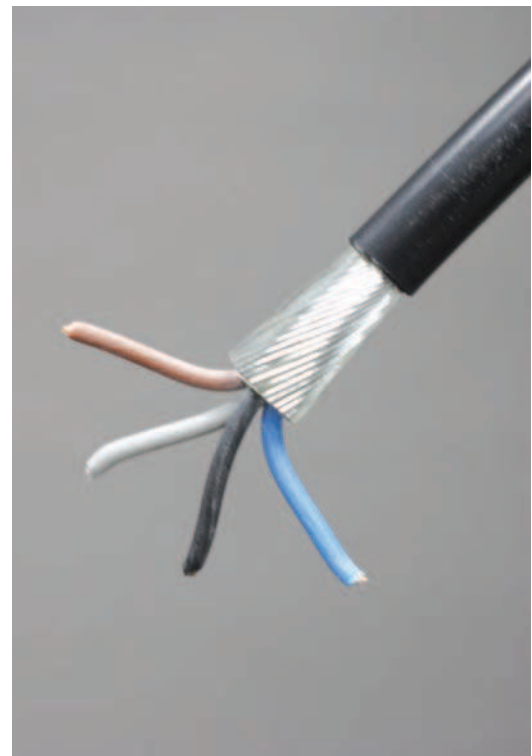
A complete armoured cable gland consists of one gland, shroud, earth tag and locknut. Sizes 20mm to 32mm contain 2 complete glands, while gland sizes 40mm to 75mm contain one complete gland. BW gland packs are suitable for indoor use, CW gland packs for outdoor use and LSF (low smoke and fume) gland packs are suitable for use when the fire, smoke emission or toxic fumes would create a threat to life and equipment.



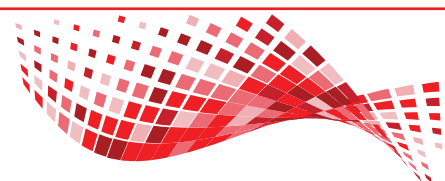
Order Code	Description	Cable Diameter Min-Max (mm)	Glands Per Pack
20S	SWA Gland Pack 20mm Small	11.4-15.9	2
20	SWA Gland Pack 20mm	15.0-20.9	2
25	SWA Gland Pack 25mm	20.3-27.4	2
32	SWA Gland Pack 32mm	26.0-33.9	2
40	SWA Gland Pack 40mm	31.0-40.4	1
50	SWA Gland Pack 50mm	36.5-46.7	1
63	SWA Gland Pack 63mm	48.9-59.4	1
75	SWA Gland Pack 75mm	62.8-73.4	1

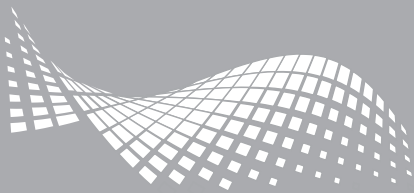
Please specify which type of gland pack you require, BW, CW or LSF.

Examples: BW20 = 20mm Indoor SWA Gland Pack.
 CW25 = 25mm Outdoor SWA Gland Pack,



SWA Cable Size	Approx Rating (Amps)	Two Core		Three Core		Four Core	
		Gland Pack	Cleat	Gland Pack	Cleat	Gland Pack	Cleat
1.5mm	16	BW20S	5	BW20S	5	BW20S	6
2.5mm	20	BW20S	5	BW20S	6	BW20S	6
4.0mm	27	BW20S	6	BW20S	6	BW20	6
6.0mm	34	BW20	6	BW20	7	BW20	7
10.0mm	46	BW25	7	BW25	8	BW25	8
16.0mm	62	BW25	8	BW25	9	BW25	10
25.0mm	80	BW25	9	BW25	10	BW32	11
35.0mm	99	BW32	10	BW32	11	BW40	12





Cable Accessories

Brass CXT Gland Packs

CXT gland packs are IP66 rated and are suitable for use with flexible armoured cables such as SY and CY screened control flex. The IP66 watertight seal enables the glands to be used for both indoors and outdoors applications. A complete gland consists of one gland, two brass washers, one locknut and one shroud.



Order Code	Description	Cable Diameter Min-Max (mm)	Sets Per Pack
CXT20S	SWA Gland Pack 20mm Small	6.1-11.6	2
CXT20	SWA Gland Pack 20mm	9.8-13.9	2
CXT25	SWA Gland Pack 25mm	11.1-19.9	2
CXT32	SWA Gland Pack 32mm	18.3-33.9	2
CXT40	SWA Gland Pack 40mm	31.0-40.4	1
CXT50	SWA Gland Pack 50mm	36.5-46.7	1
CXT63	SWA Gland Pack 63mm	44.9-59.4	1



Cable Marker Dispenser

This cable marking system consists of a handy dispenser, featuring a tear-off mechanism, which is filled with 10 rolls of self adhesive vinyl cloth tape. Rolls are 5mm wide and 2.4mts long and contain about 500 markings. The dispenser contains numbers 0 to 9 (one roll of each).



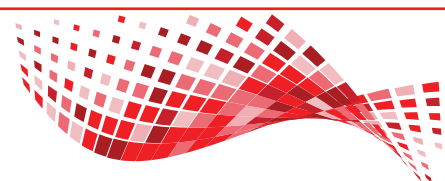
Order Code	Description
CMD1	Cable Marker Dispenser-10 rolls (0-9 inc) - Black On White

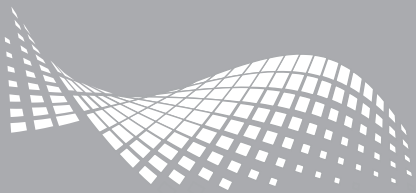
Cable Marker Kit

An 18 compartment kit containing 4500 markers.

Order Code	Description
CMK4500/18	Cable Marker Kit Containing 4500 Markers And An Application Tool. Consisting Of 250 Of Each Number, 0-9 And Also The Letters, L, N, R, S, T, +, - And $\frac{1}{2}$.

Note: The application tool is available separately - Order Code : **CMAT1**





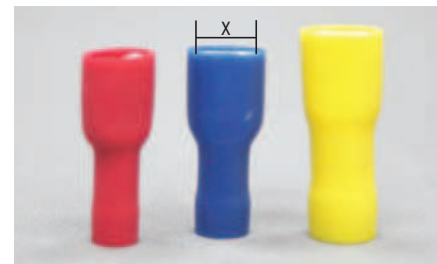
Cable Accessories

Pre-Insulated Crimp Terminals

Pre-insulated crimp terminals are suitable for cable sizes 0.5mm² - 6.0mm². The insulation sleeve is colour coded in red, blue or yellow to indicate cable size. All pre-insulated crimp terminals are sold in bags of 100.

Fully Insulated Female Push-On Terminals

X	Red (0.5-1.5mm)	Blue (1.5-2.5mm)	Yellow (4.0-6.0mm)
2.8mm	1231	-	-
4.8mm	1218	1219	-
6.3mm	1207	1213	1215



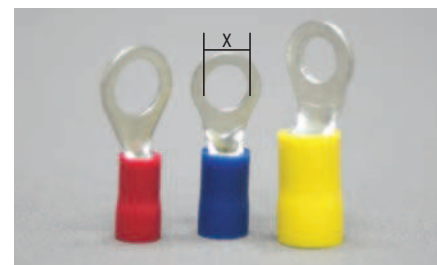
Splice Terminals

X	Red (0.5-1.5mm)	Blue (1.5-2.5mm)	Yellow (4.0-6.0mm)
N/A	2409	2410	2411



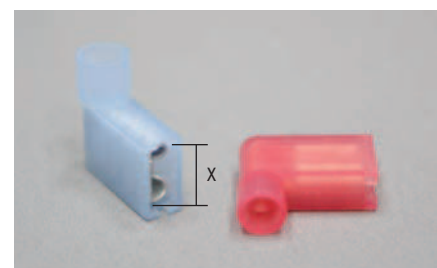
Ring Terminals

X	Red (0.5-1.5mm)	Blue (1.5-2.5mm)	Yellow (4.0-6.0mm)
3.7mm	1602	1613	1626
4.3mm	1604	1614	1624
5.3mm	1606	1616	1625
6.5mm	1607	1618	1627
8.5mm	1608	1619	1629



Fully Insulated Female Angled Push-On Terminals

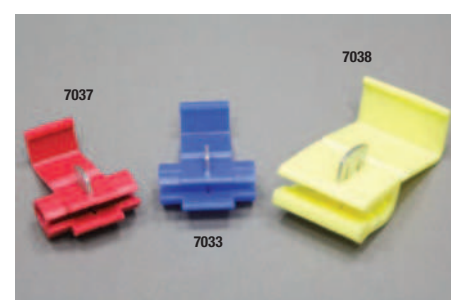
X	Red (0.5-1.5mm)	Blue (1.5-2.5mm)	Yellow (4.0-6.0mm)
6.3mm	1236	1237	1238



Self Stripping Connectors - Scotchlok Type

Scotchlocks offer excellent electrical connection without cutting tap or run wires. They are simple to use (applied with pliers) and offer three types of connection: tap, low voltage and pigtail. Pack quantity is 100.

Colour And Size	Red (0.5-1.5mm)	Blue (1.5-2.5mm)	Yellow (4.0-6.0mm)
Order Code	7037	7033	7038



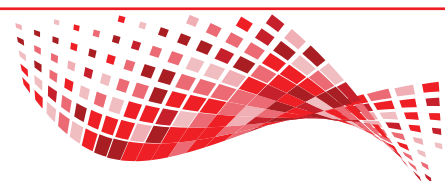
020 8507 1001

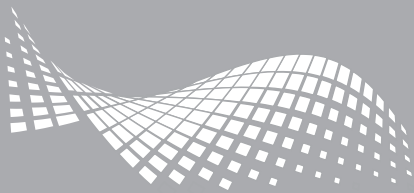


www.pewelectrical.com



sales@pewelectrical.com





Cable Accessories

WAGO Connectors

Compact splicing connectors great for managing cables. Come in 2, 3 or 5 connectors. Easy to use; just flick the lever up and place your cable in.

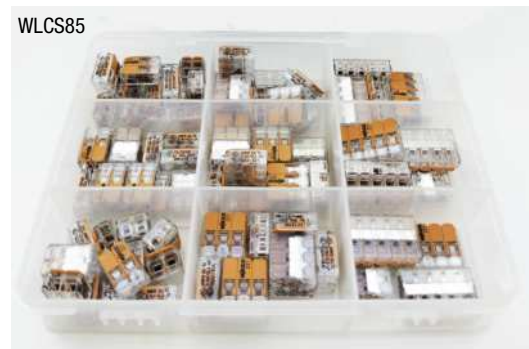
Connectors

Order Code	Description	Connector count
WC2212w	2 Connector Splicer	2 way
WC2213w	3 Connector Splicer	3 way
WC2215w	5 Connector Splicer	5 way
WC2212INLINE	Cable inline	1 way



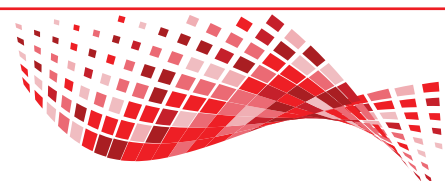
Connector kits

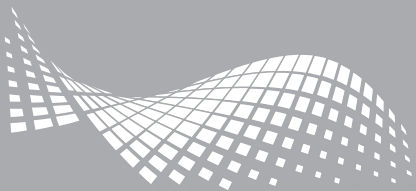
Order Code	Description	Pieces
WBIB75	75 Piece Connector Box	75
WLCS85	85 Piece Connector Box	85 (40 x 2w; 30 x 3w; 15 x 5w)



Inline Mounting Carriers

Order Code	Description
2212501	Inline Mounting Carrier With Strain Relief
2212502	2 Way Mounting Carrier With Strain Relief
2212503	3 Way Mounting Carrier With Strain Relief
2212504	4 Way Mounting Carrier With Strain Relief
2212505	5 Way Mounting Carrier With Strain Relief





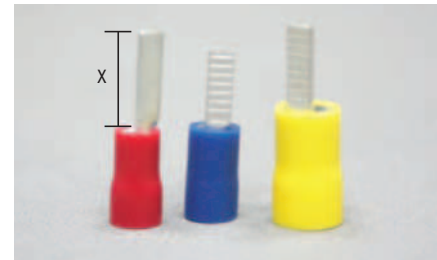
Cable Accessories

Pre-Insulated Crimp Terminals

Pre-insulated crimp terminals are suitable for cable sizes 0.5mm² - 6.0mm². The insulation sleeve is colour coded in red, blue or yellow to indicate cable size. All pre-insulated crimp terminals are sold in bags of 100.

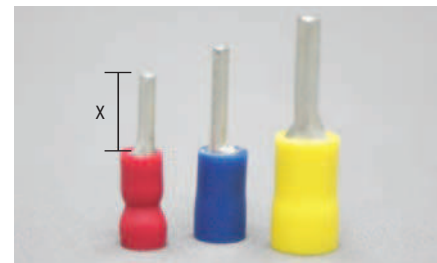
Blade Terminals

X	Red (0.5-1.5mm)	Blue (1.5-2.5mm)	Yellow (4.0-6.0mm)
10.0mm	-	2435	2437
11.0mm	2433	-	-
14.0mm	-	-	-
18.0mm	2434	2436	2438



Pin Terminals

X	Red (0.5-1.5mm)	Blue (1.5-2.5mm)	Yellow (4.0-6.0mm)
9.0mm	2430	2431	-
12.0mm	2427	2428	-
14.0mm	-	-	2429



Piggy Back Terminals

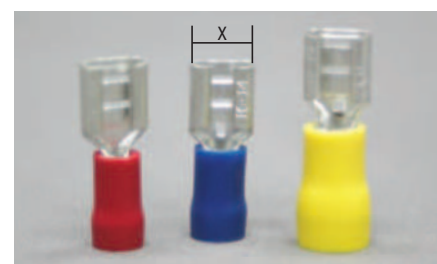
X	Red (0.5-1.5mm)	Blue (1.5-2.5mm)	Yellow (4.0-6.0mm)
6.3mm	1205	1211	1235



Female Push-On Terminals

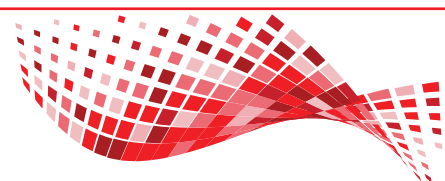
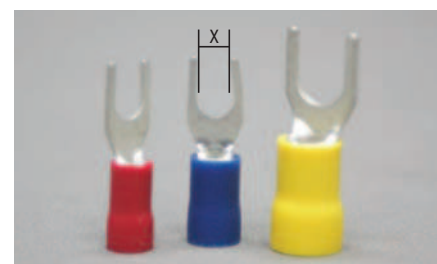
X	Red (0.5-1.5mm)	Blue (1.5-2.5mm)	Yellow (4.0-6.0mm)
2.8mm	1201	-	-
4.8mm	1203	1208	-
6.3mm	1204	1210	1214
9.5mm	-	-	1217

Example: Female push-on terminal for 2.5mm cable = 1210



Fork Terminals

X	Red (0.5-1.5mm)	Blue (1.5-2.5mm)	Yellow (4.0-6.0mm)
3.2mm	2001	2010	-
3.7mm	2002	2011	2023
4.3mm	2006	2014	2020
5.3mm	2008	2017	2021
6.5mm	2009	2019	2022



Cable Accessories

Spade Terminals

X	Red (0.5-1.5mm)	Blue (1.5-2.5mm)	Yellow (4.0-6.0mm)
6.3mm	1206	1212	1216



Flex End Terminals

Order Code	Description	Colour Code
VICE0505	Flex End Terminal For 0.5mm ² Cable	White
VICE7575	Flex End Terminal For 0.75mm ² Cable	Blue
VICE1010	Flex End Terminal For 1.0mm ² Cable	Red
VICE1515	Flex End Terminal For 1.5mm ² Cable	Black
VICE2525	Flex End Terminal For 2.5mm ² Cable	Grey
VICE4040	Flex End Terminal For 4.0mm ² Cable	Orange
VICE6040	Flex End Terminal For 6.0mm ² Cable	Green
VICE0010	Flex End Terminal For 10.0mm ² Cable	Brown



Closed End (Insulated) Terminals

Conductor And Size	(1.0-1.75mm)	(1.0-2.5mm)	(2.0-5.5mm)
Order Code	2423	2422	2424

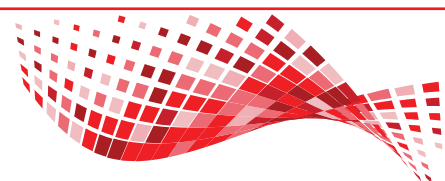
Uninsulated Copper Terminals

Hole Size	6mm Stud	8mm Stud	10mm Stud	12mm Stud	14mm Stud	16mm Stud	Through Splice
10mm	7110M6	7110M8	7110M10	7110M12	-	-	7110THRO
16mm	7116M6	7116M8	7116M10	7116M12	-	-	7116THRO
25mm	7125M6	7125M8	7125M10	7125M12	-	-	7125THRO
35mm	7135M6	7135M8	7135M10	7135M12	-	-	7135THRO
50mm	7150M6	7150M8	7150M10	7150M12	-	-	7150THRO
70mm	7170M6	7170M8	7170M10	7170M12	-	-	7170THRO
95mm	-	7195M8	7195M10	7195M12	7195M14	7195M16	7195THRO
120mm	-	71120M8	71120M10	71120M12	71120M14	71120M16	71120THRO
150mm	-	-	71150M10	71150M12	71150M14	71150M16	71150THRO
185mm	-	-	71185M10	71185M12	71185M14	71185M16	71185THRO
240mm	-	-	-	71240M12	71240M14	71240M16	71240THRO



Uninsulated copper terminals are manufactured from seamless copper tube and are tested to comply with BS4579.

Example: 7125M10 is a 25mm² copper terminal with an M10 diameter fixing hole.



Cable Accessories

Insulated And Uninsulated Terminal Kits

We offer a number of terminal kits containing a selection of either insulated crimp terminals or uninsulated copper tube terminals. Kits are available both with and without crimping tools and can easily be topped up from our selection of terminals.

Order Code	Description
TK1	Assortment of 12 popular pre-insulated crimp terminals (1.5-6.0mm). Complete with a hand ratchet crimp tool.
	Kit Includes: 1210, 1614, 2006, 2427, 2428, 1625, 1627 1204, 1606, 1607, 1616 and 2010



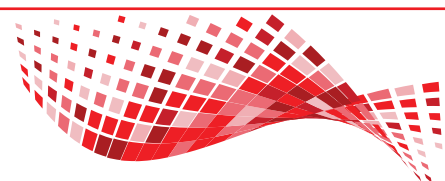
Order Code	Description
TK2	Assortment of 6 popular uninsulated copper tube terminals (6-16mm). Complete with a hand ratchet crimp tool.
	Kit Includes: 7106M6, 7106M8, 7110M6, 7110M8, 7116M6 and 7116M8

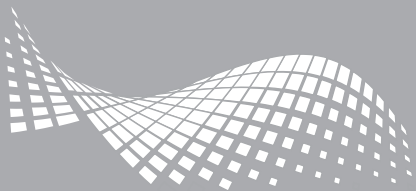


Order Code	Description
TK3	Assortment of 16 popular pre-insulated crimp terminals (1.5-6mm).
	Kit Includes: 1204, 1604, 1607, 1618, 2409, 2427, 1210, 1606, 1616 1614, 2410, 2428, 1627, 1625, 2411 and 2429



Order Code	Description
TK4	Assortment of 12 popular uninsulated copper tube terminals (10-16mm).
	Kit Includes: 7110M6, 7110M10, 7116M8, 7125M6, 7125M8 7125M10, 7135M8, 7135M10, 7135M12, 7150M6 7150M8 and 7150M10

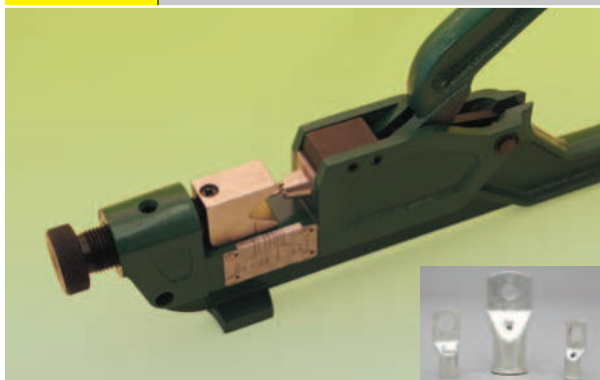




Cable Accessories

Compression, Cutting And Stripping Tools

Order Code	Description
CT25150	Non ratchet heavy duty crimping tool for copper tube terminals size 25mm-150mm.



Order Code	Description
9018	Ratchet crimping tool for copper tube terminals size 10mm-16mm.



Order Code	Description
9014	Ratchet crimping tool for pre-insulated terminals size 0.5mm-6.0mm.



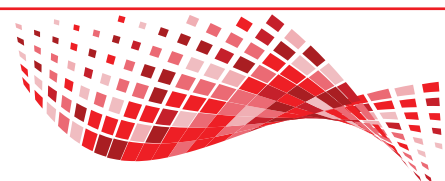
Order Code	Description
ESA0760C	Heavy duty ratchet crimping tool for insulated crimp terminals size 0.5mm-6mm. Designed for frequent use. Features low pressure grip for comfort.

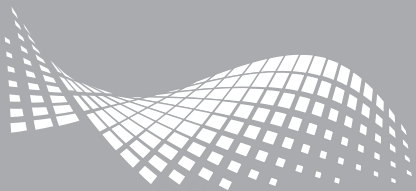


Order Code	Description
9009	Ratchet crimping tool for fully insulated female angled push-on terminals 6mm.



Order Code	Description
CS629	Cable sheath stripper. Designed to strip cable sheath on cables 6.0 to 29mm in diameter. It features a self locking adjustable cutting depth for sheath thickness.





Cable Accessories

Compression, Cutting And Stripping Tools

Order Code	Description
COC5862	Coaxial cable stripper. Designed to strip cable sheath from coaxial TV cables 4.8 to 7.5mm in diameter, i.e. RG58 and RG59 TV cable. It can also be adjusted to strip RG62 TV cable by means of an hexagon key, which is supplied.



Order Code	Description
SAS618	Self adjusting insulation stripper. Well suited for repetitive tasks, the tool adjusts to suit the cable cross section automatically. Suitable for stripping cables from 6.0 to 18mm in dia.



Order Code	Description
KT1AS	A versatile low cost tool that will strip, crimp and cut PVC cables from 0.5mm-6.0mm.



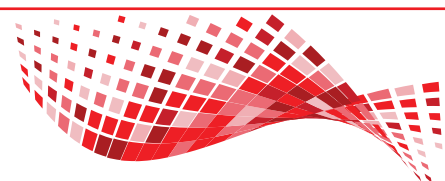
Order Code	Description
H35/2	Single hand action, professional cable stripper, featuring jaws that automatically stay open so that the cable can be removed without crushing. suitable for cables 0.25mm-6.0mm offering a maximum strip length of 22mm.



Order Code	Description
7083	Medium duty cable cutter for cables up to 50mm ² (14mm diameter).



Order Code	Description
DCC500HR	Hand ratchet cable cutter for cutting PVC sheathed copper and aluminium cables up to 500mm ² (55mm diameter).



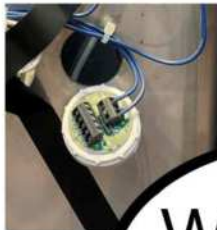


PEW Electrical
Distributors

WhatsUp?

We are on WhatsApp!

Send us the image of
the parts that need identifying!



What are
those?

VEGA and
Dewhurst
pushbuttons!



Unit 1 The iO Centre
59-71 River Road
Barking
Essex
IG11 0DR
sales@pewelectrical.com
0208 507 1001

www.pewelectrical.com



Serving the lift & escalator industry since 1988