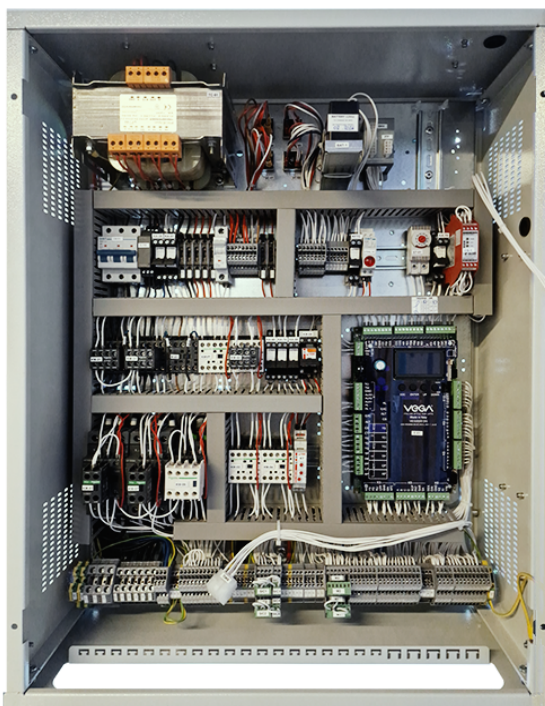


HYDRAULIC CONTROL PANEL

Our Hydraulic control panels are all powered by our highly reliable VEGA control boards offering outstanding performance, which are specifically designed to work with both VEGA's in-house-manufactured equipment (for new installations) and a wide variety of third-party equipment (for modernisations).



MAIN FEATURES

- Control Board: VEGA VEG2000DG, SIRIA or CPU100
- Power: Max. 22kW Star/Delta, 15kW Direct
- Starting: Star/Delta, Direct or Soft Start
- Max. speed/stop: 1 m/s, 32 floors
- Type: Simplex, Duplex, Triplex
- Re-levelling: Included
- Signalisation: Parallel, VEGA Serial
- Enclosure: Powder coated 1.2mm stainless steel H800xW600xD250mm (or bespoke)
- Positioning: Magnetic Sensors, Absolute Encoder
- Accessories: Pre-wired car top control, fixtures, travelling flex, halfway boxes, VEGA serial looms and boards.

AVAILABLE FROM STOCK - TECHNICAL FEATURES

Starting:	Direct, Star/Delta, Soft Start
Nom/Max Speed:	0.6 ms / 1.0ms
Max Stops:	8 floors
Movement:	Re-levelling and A3 preparation included
Doors:	3 Phase 415VAC, 240VAC, Automatic VVVF, Manual
Car positioning:	Magnetic Sensors
Signals:	Parallel or VEGA Serial (inc. nodes and looms)
Cabinet:	RAL 7035, H800 x W600 x D250mm
Hand winding:	Buzzer with LED indicator

