

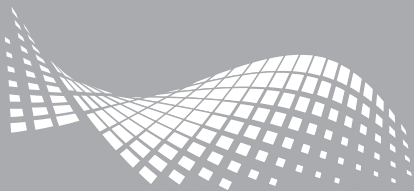


# GENERAL POWER CABLES



**PEW ELECTRICAL**  
Distributors Limited





# Wiring Cables

## PVC Equipment / Panel Wire 2491X

### Application

PVC panel wiring for use in lift controllers, relay and instrumentation panels of power switchgear and for purposes such as internal connectors in rectifier equipment and motor starters.

### Construction

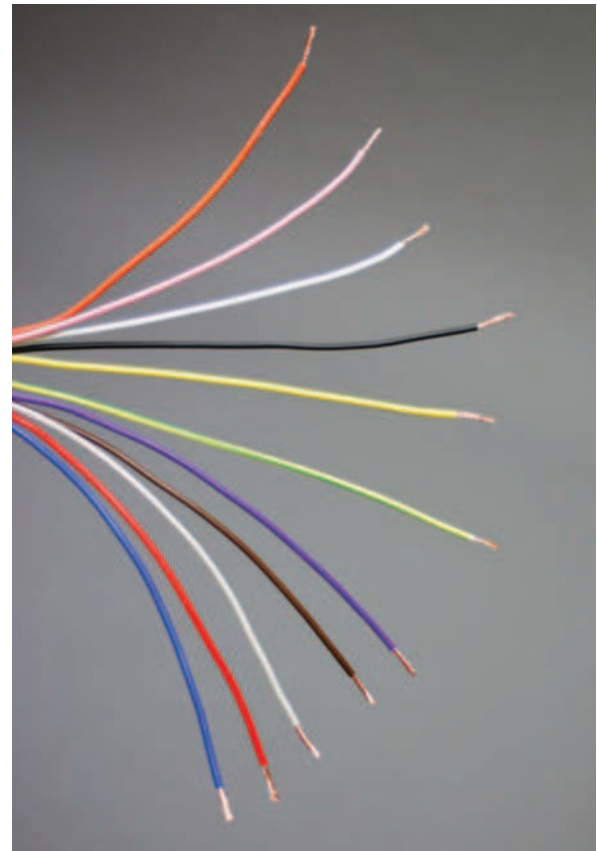
Conductor: Class 5 flexible copper conductor.  
Insulation: PVC (Polyvinyl Chloride).

### Technical Data

Voltage: 300/500V  
Temperature Range: -30°C to +70°C

### Relevant Standards

EN 50525-2-31, EN 60228  
Flame Retardant according to IEC/EN 60332-1-2



### Colours available

● BLK ● BLU ● BRN ● EAR ● GRV ● ORA ● PIN ● RED ● VIO ○ WHI ● YEL

Colour	0.75mm 2491X	1.0mm 2491X	1.0mm 2491X
	100mts	100mts	500mts
Black	.752491XBLK	1.02491XBLK	1.02491X5BLK
Blue	.752491XBLU	1.02491XBLU	1.02491X5BLU
Brown	.752491XBRN	1.02491XBRN	1.02491X5BRN
Earth	.752491XEAR	1.02491XEAR	1.02491X5EAR
Grey	.752491XGRY	1.02491XGRY	1.02491X5GRY
Orange	.752491XORA	1.02491XORA	1.02491X5ORA
Pink	.752491XPIN	1.02491XPIN	1.02491X5PIN
Red	.752491XRED	1.02491XRED	1.02491X5RED
Violet	.752491XVIO	1.02491XVIO	1.02491X5VIO
White	.752491XWHI	1.02491XWHI	1.02491X5WHI
Yellow	.752491XYEL	1.02491XYEL	1.02491X5YEL

**Dimensions:** 0.75mm 2491X (Outside diameter = 2.2mm)  
1.0mm 2491X (Outside diameter = 2.4mm)  
1.5mm 2491X (Outside diameter = 2.9mm)

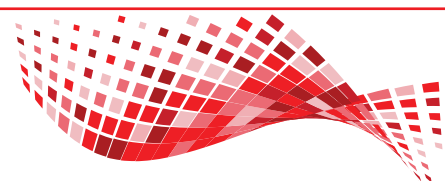
**Example:** 100mts .752491XGRY = 100mts x 0.75mm 2491X Grey.

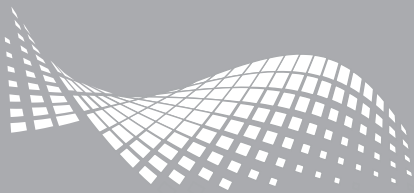


020 8507 1001

www.pewelectrical.com

sales@pewelectrical.com

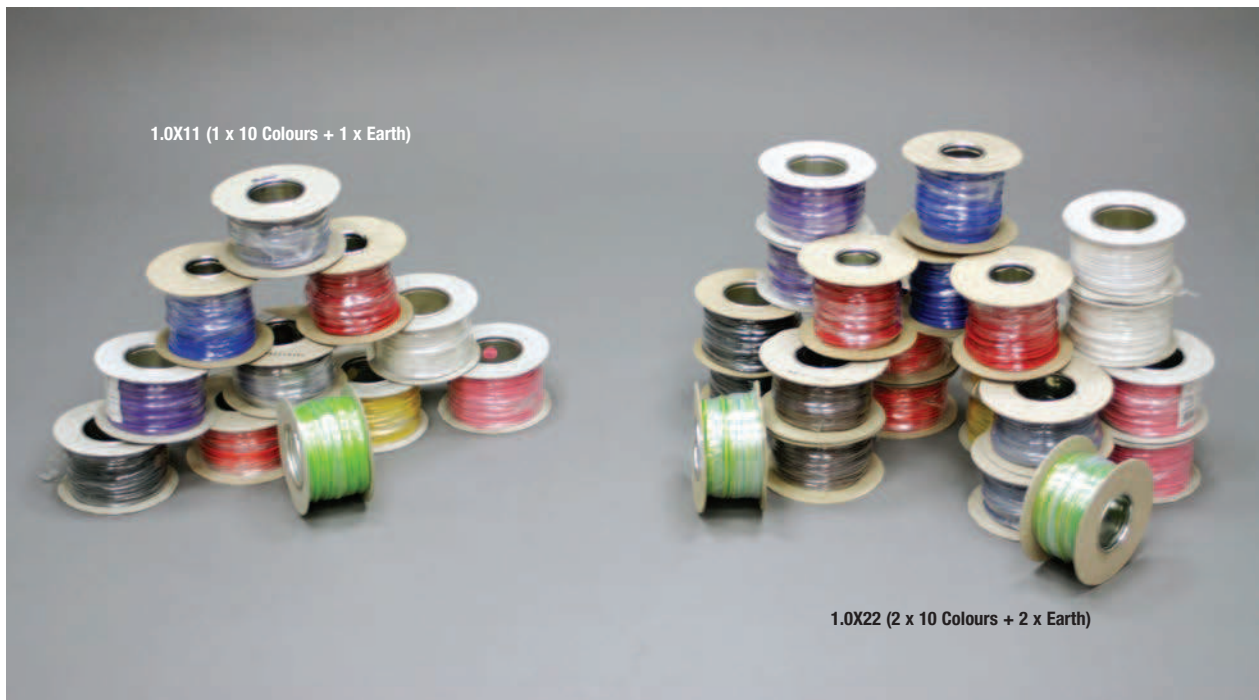




# Wiring Cables

## 2491X Cable Suites

2491X cable suites offer a fast and convenient solution to ordering multiple drums and colours. Suites are available in 100mtr and 500mtr drums and are supplied in multiples of ten (no earth) or eleven (including earth). Larger cable suites are available on request.



Suite Description	Suite Contents	0.75mm 2491X	1.0mm 2491X	1.0mm 2491X
		100mts	100mts	500mts
Suite Of 10 Colours	1 x 10 Colours	.75X10	1.0X10	1.0X510
Suite Of 11 Colours	1 x 10 Colours + 1 x Earth	.75X11	1.0X11	1.0X511
Suite Of 20 Colours	2 x 10 Colours	.75X20	1.0X20	1.0X520
Suite Of 22 Colours	2 x 10 Colours + 2 x Earth	.75X22	1.0X22	1.0X522
Suite Of 30 Colours	3 x 10 Colours	.75X30	1.0X30	-
Suite Of 33 Colours	3 x 10 Colours + 3 x Earth	.75X33	1.0X33	-
Suite Of 40 Colours	4 x 10 Colours	.75X40	1.0X40	-
Suite Of 44 Colours	4 x 10 Colours + 4 x Earth	.75X44	1.0X44	-

**Example:** .75X30 = 30 x 100mts 0.75mm 2491X (3 x 10 Colours).

**Example:** 1.0X22 = 22 x 100mts 1.0mm 2491X (2 x 10 Colours + 2 x Earth).



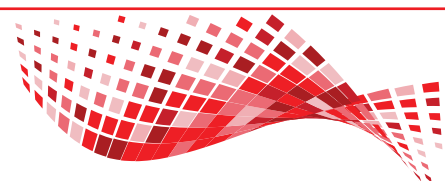
020 8507 1001

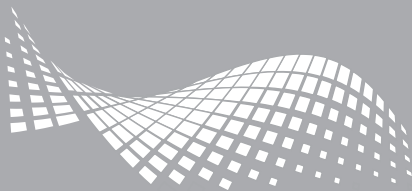


www.pewelectrical.com



sales@pewelectrical.com





# Wiring Cables

## LSZH (Low Smoke Zero Halogen) Equipment / Panel Wire 2491B

### Application

LSZH panel wiring for appliances with maximum operating temperatures of 90°C, and generally in areas (such as public and government buildings) where smoke and toxic fumes may cause a threat to life and equipment. The cables produce no corrosive gases when burnt which is particularly important where electronic equipment is installed.

### Construction

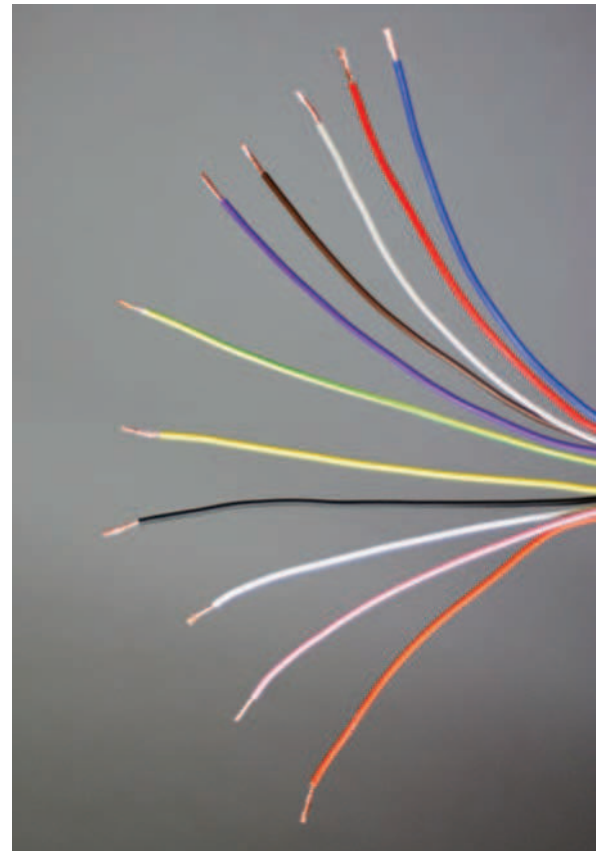
Conductor: Class 5 flexible copper conductor.  
Insulation: LSZH (Low Smoke Zero Halogen).

### Technical Data

Voltage: 0.5mm<sup>2</sup> to 1mm<sup>2</sup>: 300/500V  
1.5mm<sup>2</sup> to 240mm<sup>2</sup>: 450/750V  
Temperature Range: -25°C to +90°C

### Relevant Standards

EN 50525-3-41, EN 60228,  
Flame Retardant according to IEC/EN 60332-1-2, IEC/EN 60332-3-24  
Halogen Free according to IEC/EN 61034-1/2, IEC/EN 60754-1/2



### Colours available

● BLK ● BLU ● BRN ● EAR ● GRY ● ORA ● PIN ● RED ● VIO ○ WHI ● YEL

Colour	0.75mm 2491B	1.0mm 2491B	1.0mm 2491B	1.5mm 2491B
	100mts	100mts	500mts	100mts
Black	.752491BBLK	1.02491BBLK	1.02491B5BLK	1.52491BBLK
Blue	.752491BBLU	1.02491BBLU	1.02491B5BLU	1.52491BBLU
Brown	.752491BBRN	1.02491BBRN	1.02491B5BRN	1.52491BBRN
Earth	.752491BEAR	1.02491BEAR	1.02491E5EAR	1.52491BEAR
Grey	.752491BGRY	1.02491BGRY	1.02491B5GRY	1.52491BGRY
Orange	.752491BORA	1.02491BORA	1.02491O5ORA	1.52491BORA
Pink	.752491BPIN	1.02491BPIN	1.02491P5PIN	1.52491BPIN
Red	.752491BRED	1.02491BRED	1.02491R5RED	1.52491BRED
Violet	.752491BVIO	1.02491BVIO	1.02491V5VIO	1.52491BVIO
White	.752491BWHI	1.02491BWHI	1.02491W5WHI	1.52491BWHI
Yellow	.752491BYEL	1.02491BYEL	1.02491Y5YEL	1.52491BYEL

**Dimensions:** 0.75mm 2491B (Outside diameter = 2.8mm)  
1.0mm 2491B (Outside diameter = 2.9mm)  
1.5mm 2491B (Outside diameter = 3.5mm)

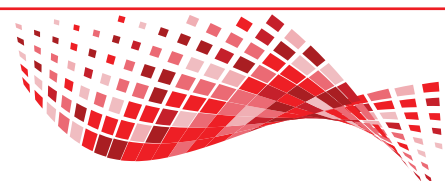
**Example:** 100mts 1.02491BORA = 100mts x 1.0mm 2491B Orange.

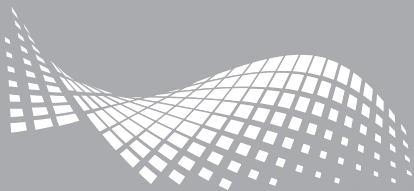


020 8507 1001

www.pewelectrical.com

sales@pewelectrical.com





# Wiring Cables

## LSZH 2491B Cable Suites

2491B cable suites offer a fast and convenient solution to ordering multiple drums and colours. Suites are available in 100mtr and 500mtr drums and are supplied in multiples of ten (no earth) or eleven (including earth). Larger cable suites are available on request.



Suite Description	Suite Contents	0.75mm 2491B	1.0mm 2491B	1.5mm 2491B	1.0mm 2491B
		100mts	100mts	100mts	500mts
Suite Of 10 Colours	1 x 10 Colours	.75B10	1.0B10	1.5B10	1.0B510
Suite Of 11 Colours	1 x 10 Colours + 1 x Earth	.75B11	1.0B11	1.5B11	1.0B511
Suite Of 20 Colours	2 x 10 Colours	.75B20	1.0B20	1.5B20	1.0B520
Suite Of 22 Colours	2 x 10 Colours + 2 x Earth	.75B22	1.0B22	1.5B22	1.0B522
Suite Of 30 Colours	3 x 10 Colours	.75B30	1.0B30	1.5B30	-
Suite Of 33 Colours	3 x 10 Colours + 3 x Earth	.75B33	1.0B33	1.5B33	-
Suite Of 40 Colours	4 x 10 Colours	.75B40	1.0B40	1.5B40	-
Suite Of 44 Colours	4 x 10 Colours + 4 x Earth	.75B44	1.0B44	1.5B44	-

**Example:** .75B30 = 30 x 100mts 0.75mm 2491B (3 x 10 Colours).

**Example:** 1.0B22 = 22 x 100mts 1.0mm 2491B (2 x 10 Colours + 2 x Earth).



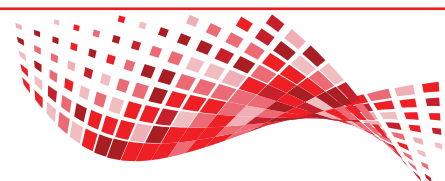
020 8507 1001



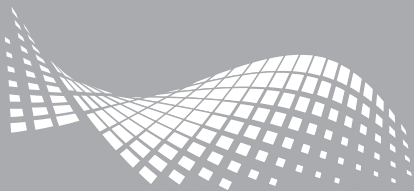
www.pewelectrical.com



sales@pewelectrical.com







# Wiring Cables

## Single Core Cable 6491X

### Application

6491X Cable is suitable for power and lighting circuits and building wiring. The cable is intended for use in semi-flush exposed conduits and embedded conduits as well as in closed installation ducts, and is ideal for the internal wiring of appliances.

### Construction

Conductor: Class 2 stranded copper conductor  
Insulation : PVC (Polyvinyl Chloride)

### Technical Data

Voltage: 450/750V.  
Temperature Range: -15°C to +70°C

### Relevant Standards

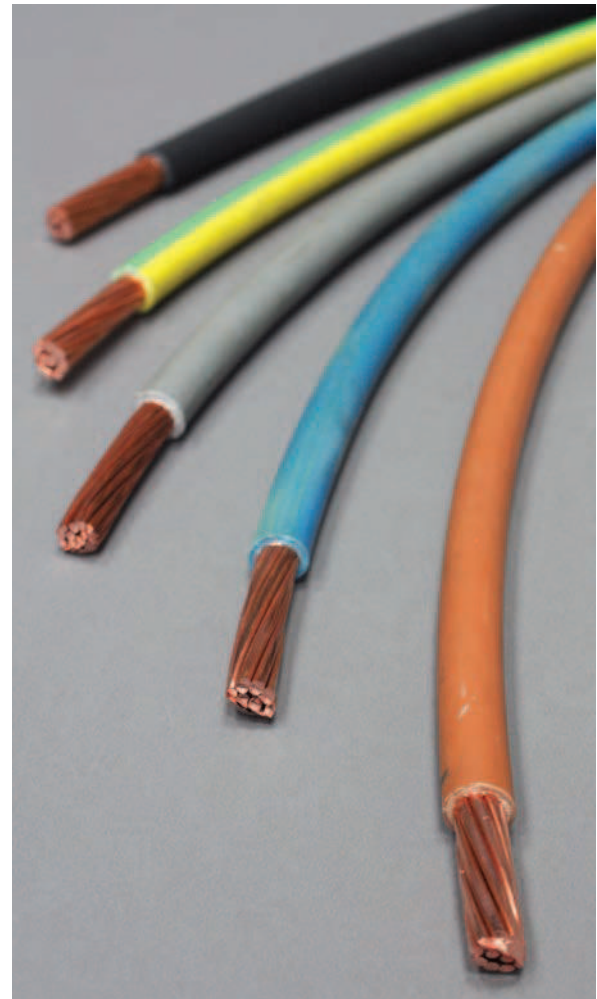
EN 50525-2-31  
Flame Retardant according to IEC/EN 60332-1-2

### Drum Sizes

1.5-2.5mm: 100mts and 500mts.  
4.0mm: 100mts.  
6.0mm-35mm: Cut to size or 50mts, 100mts.  
Sizes above 35mm are cut to size.

### Colours available

● BLK ● BLU ● BRN ● EAR ● GRY



Order Code	Description	Overall Diameter (mm)
1.56491X	1.5mm Singles Stranded	2.9
2.56491X	2.5mm Singles Stranded	3.6
4.06491X	4.0mm Singles Stranded	4.1
6.06491X	6.0mm Singles Stranded	4.7
10.06491X	10.0mm Singles Stranded	5.9
16.06491X	16.0mm Singles Stranded	6.8
25.06491X	25.0mm Singles Stranded *	8.4
35.06491X	35.0mm Singles Stranded *	9.4
50.06491X	50.0mm Singles Stranded *	11
70.06491X	70.0mm Singles Stranded *	12.7
95.06491X	95.0mm Singles Stranded *	14.7

Note: Cables marked with \* are available to order only.

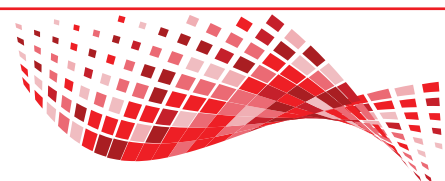
Example: 100mts 2.56491XBLK = 100mts x 2.5mm 6491X Black.

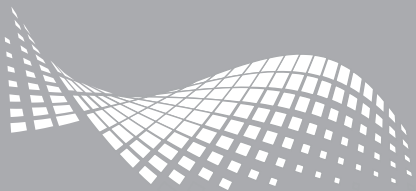


020 8507 1001

www.pewelectrical.com

sales@pewelectrical.com





## Wiring Cables

### 6491X Cable Suites

6491X cable suites offer a fast and convenient solution to ordering multiple drums and colours of 6491X cable. We offer 6491X cable suites in multiples of three or five colours, as detailed in the order table below.



Order Code	Description
1.56X3	Suite Of 3 x 100mts 1.5mm 6491X (Earth, Blue, Brown)
1.56X5	Suite Of 5 x 100mts 1.5mm 6491X (Earth, Blue, Brown, Grey, Black)
2.56X3	Suite Of 3 x 100mts 2.5mm 6491X (Earth, Blue, Brown)
2.56X5	Suite Of 5 x 100mts 2.5mm 6491X (Earth, Blue, Brown, Grey, Black)

**Example:** 1.56X3 = 3 x 100mts x 1.5mm 6491X (Earth, Blue, Brown).



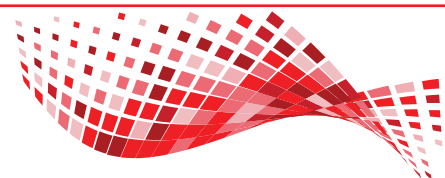
020 8507 1001

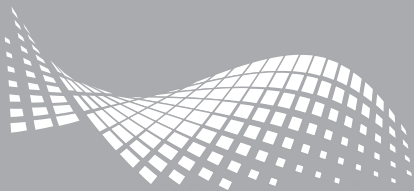


[www.pewelectrical.com](http://www.pewelectrical.com)



[sales@pewelectrical.com](mailto:sales@pewelectrical.com)





# Wiring Cables

## LSZH Single Core Cable 6491B

### Application

Suitable for use in conduit and for fixed, protected installation. For installations where fire, smoke emission and toxic fume create a potential risk to life and equipment.

### Construction

Conductor: Class 5 flexible copper conductor.  
Insulation: LSZH (Low Smoke Zero Halogen).

### Technical Data

Voltage: 450/750V.  
Temperature Range: 0°C to +90°C

### Relevant Standards

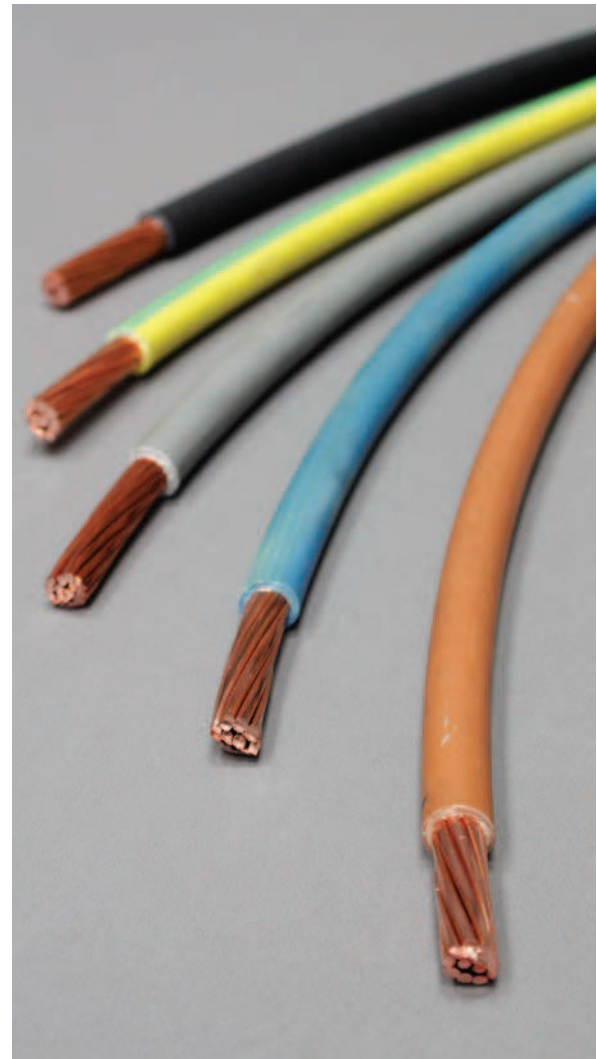
EN 50525-3-41, EN 60228  
Flame Retardant according to IEC/EN 60332-1-2 Halogen Free  
according to IEC/EN 61034-1/2, IEC/EN 60754-1/2.

### Drum Sizes

1.5-2.5mm: 100mts and 500mts.  
4.0mm: 100mts.  
6.0mm-35mm: Cut to size or 100mts.  
Sizes above 35mm are cut to size.

### Colours available

● BLK ● BLU ● BRN ● EAR ● GRY



Order Code	Description	Overall Diameter (mm)
1.56491B	1.5mm Singles Stranded	3.4
2.56491B	2.5mm Singles Stranded	4.1
4.06491B	4.0mm Singles Stranded	4.7
6.06491B	6.0mm Singles Stranded	5.4
10.06491B	10.0mm Singles Stranded	6.8
16.06491B	16.0mm Singles Stranded	8
25.06491B	25.0mm Singles Stranded *	9.8
35.06491B	35.0mm Singles Stranded *	11
50.06491B	50.0mm Singles Stranded *	13.2
70.06491B	70.0mm Singles Stranded *	15.1
95.06491B	95.0mm Singles Stranded *	17

Note: Cables marked with \* are available to order only.

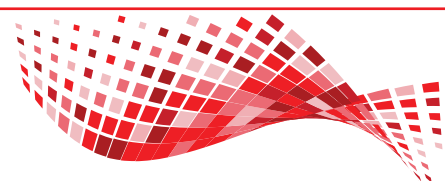
Example: 100mts 2.56491BGRY = 100mts x 2.5mm 6491B Grey.



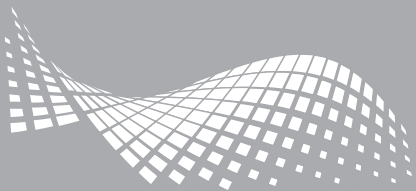
020 8507 1001

www.pewelectrical.com

sales@pewelectrical.com







## Wiring Cables

### LSZH 6491B Cable Suites

6491B cable suites offer a fast and convenient solution to ordering multiple drums and colours of 6491B cable. We offer 6491B cable suites in multiples of three or five colours, as detailed in the order table below.



Order Code	Description
1.56B3	Suite Of 3 x 100mts 1.5mm 6491B (Earth, Blue, Brown)
1.56B5	Suite Of 5 x 100mts 1.5mm 6491B (Earth, Blue, Brown, Grey, Black)
2.56B3	Suite Of 3 x 100mts 2.5mm 6491B (Earth, Blue, Brown)
2.56B5	Suite Of 5 x 100mts 2.5mm 6491B (Earth, Blue, Brown, Grey, Black)

**Example:** 2.56B5 = 5 x 100mts x 2.5mm 6491B (Earth, Blue, Brown, Grey, Black).



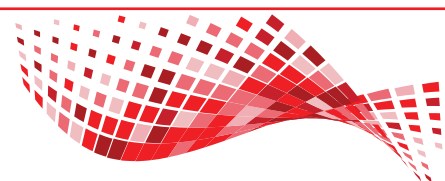
020 8507 1001

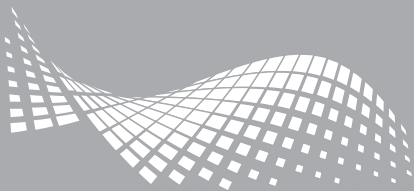


[www.pewelectrical.com](http://www.pewelectrical.com)



[sales@pewelectrical.com](mailto:sales@pewelectrical.com)





# Flexible Cables

## YY Control Flex

### Application

YY control flex is for instrumentation and control equipment, for tooling machinery production lines, and in flexible applications for free movement without tensile load. Suitable in dry, ambient and wet rooms. These indoor cables are not used for external or underground installation.

### Construction

Conductor: Class 5 flexible plain copper  
Insulation: PVC (Polyvinyl Chloride)  
Sheath: PVC (Polyvinyl Chloride)

### Core Identification

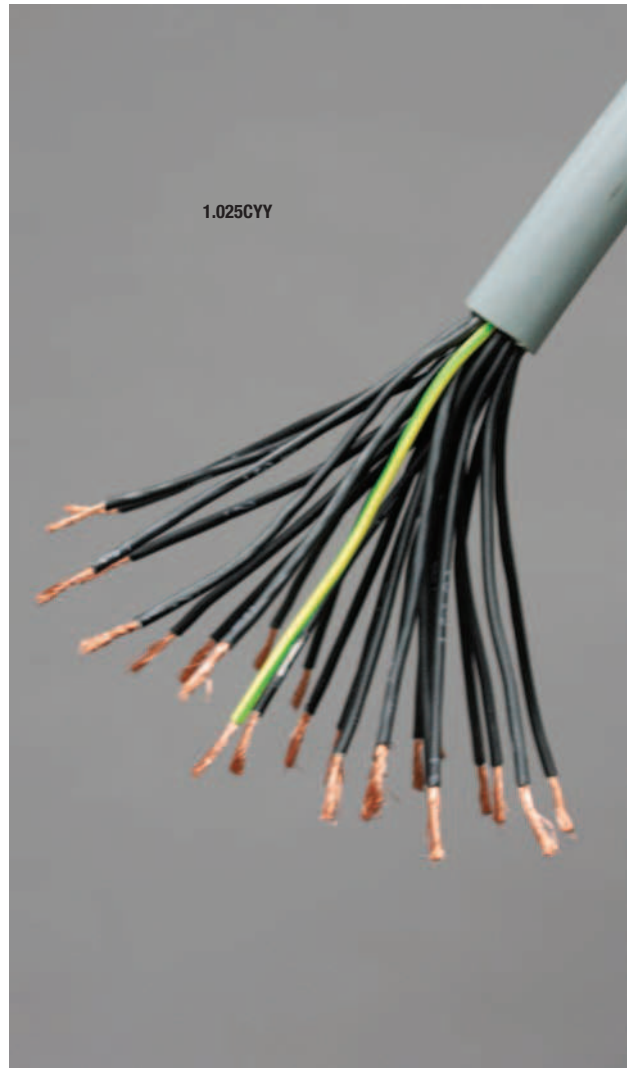
- Black with ○ White number
- From 3 cores: ● Black with white number + ● Green/Yellow
- Sheath Colour: ● Grey

### Technical Data

Voltage: 300/500V  
Temperature Range: fixed: -40°C to +80°C / flexed: -5°C to +70°C

### Relevant Standards

VDE 0207-363-3, VDE 0482-332-1-2, VDE 819-102 (TM54)  
Flame Retardant according to IEC/EN 60332-1-2



Order Code	Description	Overall Diameter (mm)
0.755CYY	0.75mm 5 Core YY Control Flex	6.7
0.758CYY	0.75mm 8 Core YY Control Flex	8.1
1.08CYY	1.0mm 8 Core YY Control Flex	9
0.7512CYY	0.75mm 12 Core YY Control Flex	9.9
1.012CYY	1.0mm 12 Core YY Control Flex	10.9
0.7518CYY	0.75mm 18 Core YY Control Flex	11.9
1.018CYY	1.0mm 18 Core YY Control Flex	12.9
0.7525CYY	0.75mm 25 Core YY Control Flex	14.3
1.025CYY	1.0mm 25 Core YY Control Flex	15.7



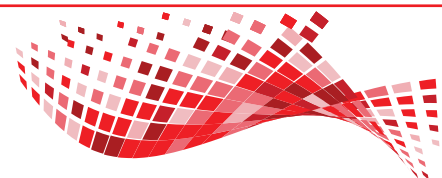
020 8507 1001



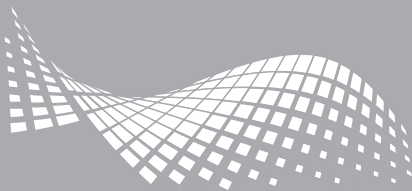
www.pewelectrical.com



sales@pewelectrical.com







# Flexible Cables

## LSZH (Low Smoke Zero Halogen) YY Control Flex

### Application

LSZH YY control flex is for instrumentation and control equipment for tooling machinery, production lines, and in flexible applications with free movement and no tensile load. Suitable for use in dry, ambient and wet rooms. These cables are not suitable for outdoor or underground installations.

### Construction

Conductor: Class 5 flexible plain copper  
Insulation: LSZH (Low Smoke Zero Halogen)  
Sheath: LSZH (Low Smoke Zero Halogen)

### Core Identification

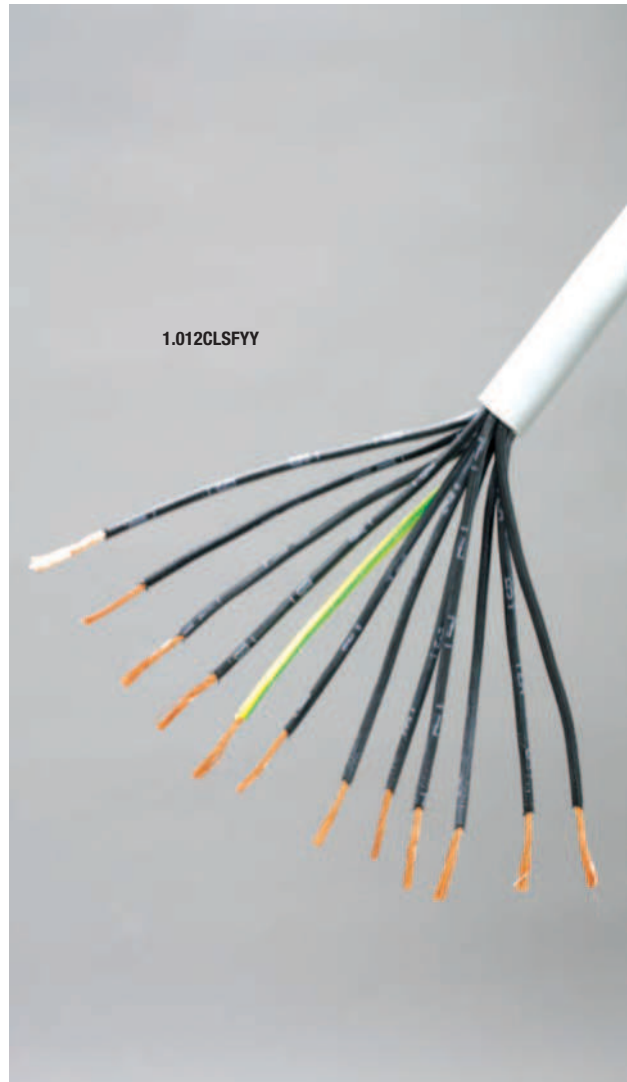
- Black with ○ White number
- From 3 cores: ● Black with ○ White number + ● Green/Yellow
- Sheath Colour ● Grey

### Technical Deta

Voltage: 300/500V  
Temperature Range: fixed: -40°C to +80°C / flexed: -15°C to +70°C

### Relevant Standards

Flame Retardant according to IEC/EN 60332-1-2,  
IEC/EN 60332-3-24  
Low Smoke Zero Halogen according to IEC/EN 60754-1/2, IEC/EN 61034-1/2



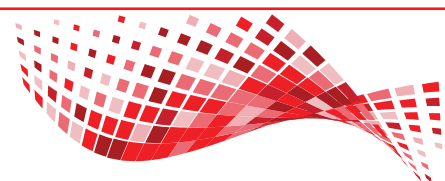
Order Code	Description	Overall Diameter (mm)
1.07CLSFYY	1.0mm 7 Core LSOH YY Control Flex	8.1
1.012CLSFYY	1.0mm 12 Core LSOH YY Control Flex	10.9
1.018CLSFYY	1.0mm 18 Core LSOH YY Control Flex	12.9
1.025CLSFYY	1.0mm 25 Core LSOH YY Control Flex	15.7
1.525CLSFYY	1.5mm 25 Core LSOH YY Control Flex	18

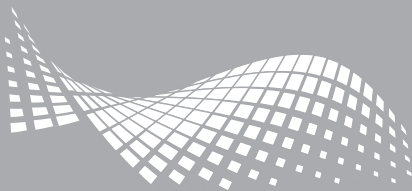


020 8507 1001

www.pewelectrical.com

sales@pewelectrical.com





# Control Cables

## SY Control Flex

### Application

SY control flex is designed for connecting cables for instrumentation and control equipment. Suitable for use in dry, moist and wet rooms. The galvanised steel wire braid serves as protection against mechanical loads and acts as a magnetic screen against interference.

### Construction

Conductor: Class 5 flexible plain copper  
 Insulation: PVC (Polyvinyl Chloride)  
 Inner/Outer Sheath: PVC (Polyvinyl Chloride)  
 Armour: GSWB (Galvanised Steel Wire Braid)

Core Identification: Sheath Colour:  
 3 core: ● Blue ● Brown ● Green/Yellow ● Transparent  
 4 core: ● Black ● Brown ● Grey ● Green/Yellow  
 5 core: ● Black ● Blue ● Brown ● Grey ● Green/Yellow

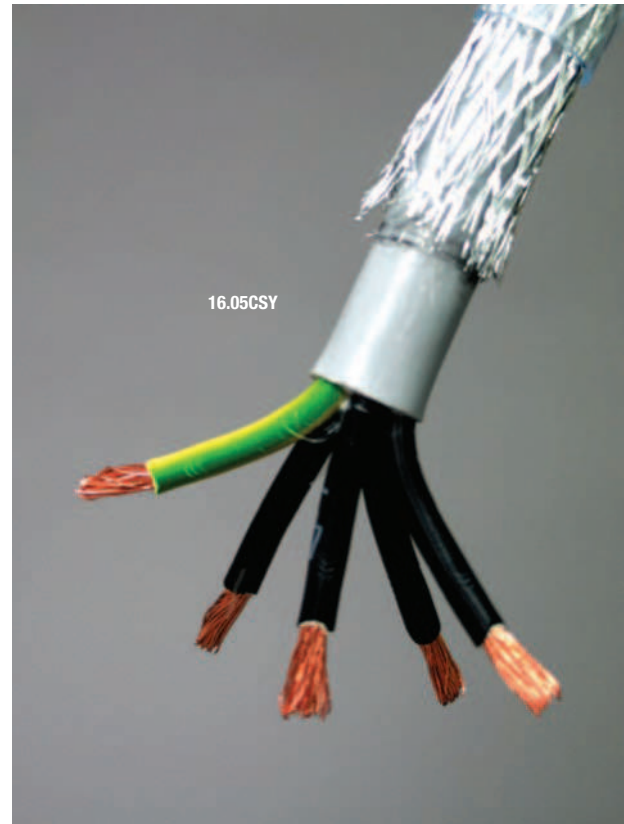
### Technical Data

Voltage: 300/500V  
 Temperature Range: -40°C to +80°C

### Relevant Standards

VDE 0207-363-3, VDE 0482-332-1-2, VDE 819-102 (TM54)  
 Flame Retardant according to IEC/EN 60332-1-2

**Note:** Cables marked with \* are available to order only.



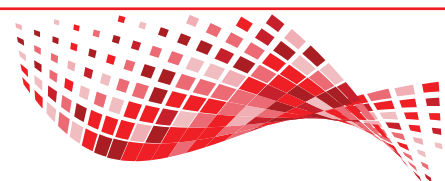
Order Code	Description	Overall Diameter (mm)	Indoor Or Outdoor Use	Suitable Clip
			Gland (Pack Of 2)	
0.753CSY	0.75mm 3 Core SY Control Flex	7.5	CXT20S	RCHL32
1.03CSY	1.0mm 3 Core SY Control Flex	7.9	CXT20S	RCHL32
1.53CSY	1.5mm 3 Core SY Control Flex	8.6	CXT20S	PC10
2.53CSY	2.5mm 3 Core SY Control Flex	10.1	CXT20S	PC10
4.03CSY	4.0mm 3 Core SY Control Flex	12	CXT20	PC12
6.03CSY	6.0mm 3 Core SY Control Flex	13.5	CXT20	PC16
1.04CSY	1.0mm 4 Core SY Control Flex	8.5	CXT20S	PC10
1.54CSY	1.5mm 4 Core SY Control Flex	9.2	CXT20S	PC10
2.54CSY	2.5mm 4 Core SY Control Flex	11.1	CXT20S	PC12
4.04CSY	4.0mm 4 Core SY Control Flex	13.2	CXT20	PC12
6.04CSY	6.0mm 4 Core SY Control Flex	14.8	CXT25	PC16
10.04CSY	10.0mm 4 Core SY Control Flex	18.8	CXT25	PC20
16.04CSY	16.0mm 4 Core SY Control Flex	20.9	CXT32	PC25
25.04CSY	25.0mm 4 Core SY Control Flex	30	CXT40 (Pack of 1)	PC25
35.04CSY	35.0mm 4 Core SY Control Flex	35.3	CXT40 (Pack of 1)	PC32
1.05CSY	1.0mm 5 Core SY Control Flex	9.1	CXT20S	PC10
1.55CSY	1.5mm 5 Core SY Control Flex	10.1	CXT20S	PC10
2.55CSY	2.5mm 5 Core SY Control Flex	12.1	CXT20S	PC12
4.05CSY	4.0mm 5 Core SY Control Flex	14.2	CXT25	PC16
6.05CSY	6.0mm 5 Core SY Control Flex	16.5	CXT25	PC16
10.05CSY	10.0 mm 5 Core SY Control Flex	20.6	CXT32	PC20
16.05CSY	16.0mm 5 Core SY Control Flex	23.4	CXT32	PC25



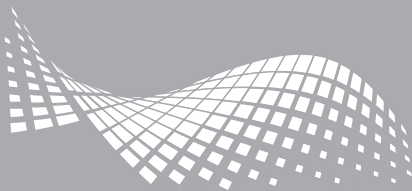
020 8507 1001

www.pewelectrical.com

sales@pewelectrical.com







# Control Cables

## LSZH (Low Smoke Zero Halogen) SY Control Flex

### Application

LSZH SY control flex is used as interconnecting cable for measuring, controlling or regulation in control equipment for assembly and production lines, conveyors and for computer units. Suitable for flexible use in conditions of light mechanical stress. The braided screen offers mechanical protection and a level of electro-magnetic shielding. The galvanized coating helps protect against corrosion. Can be used outdoors when protected against direct sunlight, and in dry or moist conditions indoors. For installations where fire, smoke emissions and toxic fumes create a potential risk to life and equipment.

### Construction

Conductor: Class 5 flexible copper conductor  
Insulation: LSZH (Low Smoke Zero Halogen) Type T16  
Bedding/Sheath: LSZH (Low Smoke Zero Halogen) Type TM7  
Braiding: GSWB (Galvanized Steel Wire Braid) minimum coverage of braiding shall be 50%

Core identification:

- 3 core: ● Blue ● Brown ● Green/Yellow
- 4 core: ● Black ● Brown ● Grey ● Green/Yellow
- 5 core: ● Black ● Blue ● Brown ● Grey ● Green/Yellow

### Sheath Colour

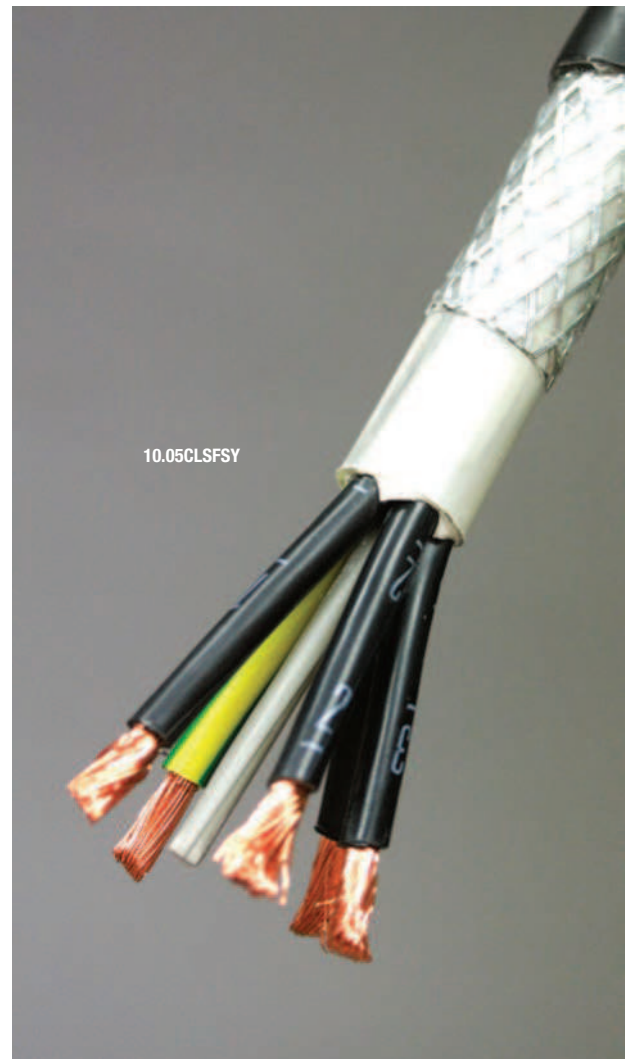
- Black

### Technical Data

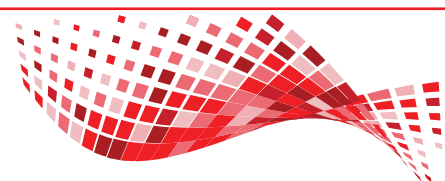
Voltage: 300/500V  
Temperature Range: -15°C to +70°C

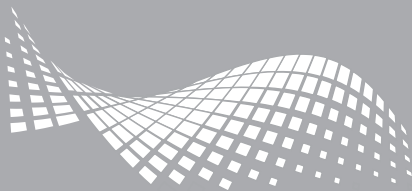
### Relevant Standards

Flame Retardant according to IEC/EN 60332-1-2, IEC/EN 60332-3-24  
Low Smoke Zero Halogen according to IEC/EN 61034-1  
Determination of halogen acid gas content: IEC/EN 60574-1  
Determination of acidity and conductivity: IEC/EN 60574-2



Order Code	Description	Overall Diameter (mm)	Indoor Or Outdoor Use	Suitable Clip
			Gland (Pack Of 2)	
6.04CLSFSY	6.0mm 4 Core LSOH SY Control Flex	15	CXT20	PC16
10.04CLSFSY	10.0mm 4 Core LSOH SY Control Flex	16	CXT25	PC20
6.05CLSFSY	6.0mm 5 Core LSOH SY Control Flex	16	CXT25	PC16
10.05CLSFSY	10.0mm 5 Core LSOH SY Control Flex	20	CXT32	PC20
16.05CLSFSY	16.0mm 5 Core LSOH SY Control Flex	24	CXT32	PC25





# Flexible Cables

## General Purpose PVC Flex 318\*Y

### Application

Ordinary duty PVC cable for use in domestic appliances, kitchens and offices. For use with light portable appliances such as table lamps and office equipment. Generally unsuitable for outdoor use or industrial applications. Also sometimes known as Twin & Earth.

### Construction

Conductor: Class 5 flexible copper conductor

Insulation: PVC (Polyvinyl Chloride)

Sheath: PVC (Polyvinyl Chloride)

Core Identification:

3 core: ● Blue ● Brown ● Green/Yellow

4 core: ● Black ● Brown ● Grey

5 core: ● Black ● Blue ● Brown ● Grey

### Technical Data

Voltage: 300/500V

Temperature Range: +5°C to +70°C

### Relevant Standards

EN 50525-2-11, EN 60228

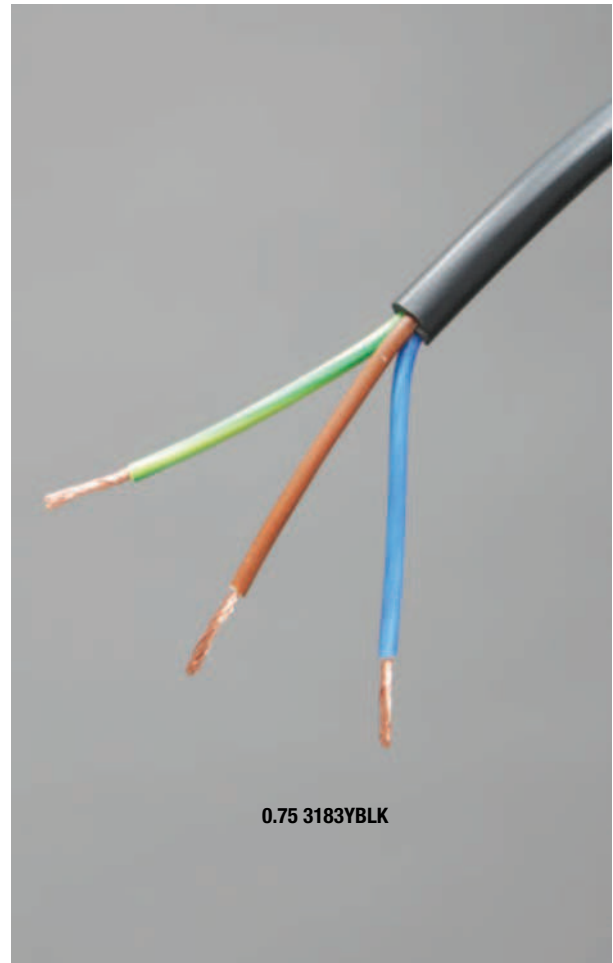
Flame Retardant according to IEC/EN 60332-1-2

### Colours Available

● BLK ○ WHI

### Drum Sizes

Cut so size or 50mts, 100mts.



Order Code	Description	Overall Diameter (mm)
0.75 3183Y	0.75mm 3 Core PVC Flex	6.7
1.0 3183Y	1.0mm 3 Core PVC Flex	7
1.5 3183Y	1.5mm 3 Core PVC Flex	8.1
2.5 3183Y	2.5mm 3 Core PVC Flex	9.9
0.75 3184Y	0.75mm 4 Core PVC Flex	7.3
1.0 3184Y	1.0mm 4 Core PVC Flex	7.9
1.5 3184Y	1.5mm 4 Core PVC Flex	9
2.5 3184Y	2.5mm 4 Core PVC Flex	10.8
0.75 3185Y	0.75mm 5 Core PVC Flex	8.1
1.0 3185Y	1.0mm 5 Core PVC Flex	8.6
1.5 3185Y	1.5mm 5 Core PVC Flex	10
2.5 3185Y	2.5mm 5 Core PVC Flex	12.1

**Note:** When ordering PVC flex, please suffix the above codes with the colour you require, Black (BLK) or White (WHI).

**Example:** 100mts 1.53183YBLK = 100mts x 1.5mm 3 Core Black PVC Flex.



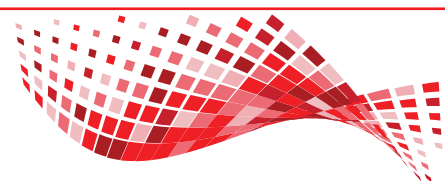
020 8507 1001



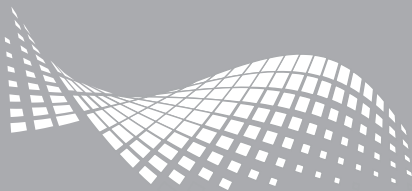
www.pewelectrical.com



sales@pewelectrical.com







# Flexible Cables

## LSZH (Low Smoke Zero Halogen) Flex 318\*B

### Application

Used as an indoor general wiring cable primarily for installations in public areas. Examples include use on pendant lighting drops or as a general supply lead within hospital or airport projects. For installation where fire, smoke emission and toxic fumes create a potential risk to life and equipment.

### Construction

Conductor: Class 5 flexible copper conductor  
Insulation: LSZH (Low Smoke Zero Halogen) Type T16  
Sheath: LSZH (Low Smoke Zero Halogen) Type TM7  
Core Identification:

- 3 core: ● Blue ● Brown ● Green/Yellow
- 4 core: ● Black ● Brown ● Grey ● Green/Yellow
- 5 core: ● Black ● Blue ● Brown ● Grey ● Green/Yellow

### Technical Data

Voltage: 300V/500V  
Temperature Range: +5°C to +70°C

### Relevant Standards

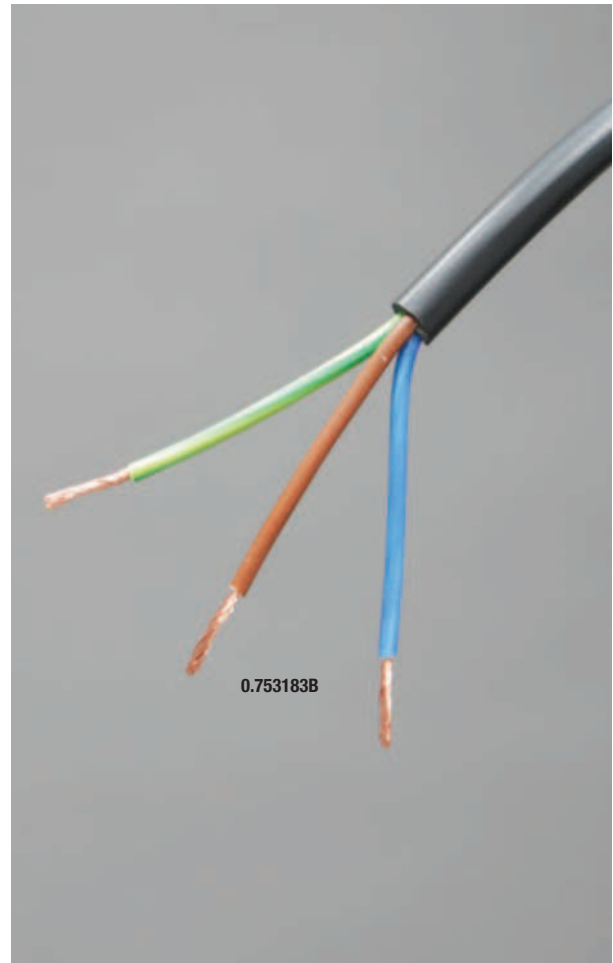
EN 50525-3-11 (HD21.14), EN 60228  
Flame Retardant according to IEC/EN 60332-1-2

### Colours Available

● BLK ○ WHI

### Drum Sizes

Cut to size or 100mts.



Order Code	Description	Overall Diameter (mm)
0.75 3183B	0.75mm 3 Core LSF Flex	6.7
1.0 3183B	1.0mm 3 Core LSF Flex	7
1.5 3183B	1.5mm 3 Core LSF Flex	8
2.5 3183B	2.5mm 3 Core LSF Flex BLK only *	9.9
0.75 3184B	0.75mm 4 Core LSF Flex	7.3
1.0 3184B	1.0mm 4 Core LSF Flex	7.9
1.5 3184B	1.5mm 4 Core LSF Flex	9
2.5 3184B	2.5mm 4 Core LSF Flex BLK only *	10.8
0.75 3185B	0.75mm 5 Core LSF Flex	8.1
1.0 3185B	1.0mm 5 Core LSF Flex	8.3
1.5 3185B	1.5mm 5 Core LSF Flex	10.4

**Note:** When ordering LSF flex, please suffix the above codes with the colour you require, Black (BLK) or White (Whi). Cables marked with \* are available to order only.

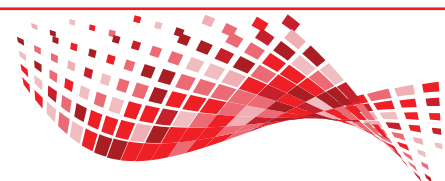
**Example:** 100mts 0.753184BBLK = 100 mts x 0.75mm 4 Core Black LSF Flex.

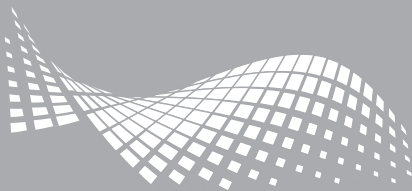


020 8507 1001

www.pewelectrical.com

sales@pewelectrical.com





# Flexible Cables

## Tough Rubber Sheathed Flex 318\*TRS / H07RN-F

### Application

These cables are designed to provide high flexibility and have the capacity to withstand weather, oil/grease, mechanical and thermal stresses. Applications include handling equipment, mobile power supplies, worksites, stage and audio visual equipment, port areas and dams. Also for use in drainage and water treatment, cold environments and severe industrial environments. Also an alternative to YY PVC Control Cable and SY PVC Control Cable.

### Construction

Conductor: Class 5 flexible copper conductor  
 Insulation: EPR (Ethylene Propylene Rubber)  
 Sheath: PCP (Polychloroprene)

- 2 core: ● Blue ● Brown
- 3 core: ● Blue ● Brown ● Green/Yellow
- 4 core: ● Black ● Brown ● Grey ● Green/Yellow
- 5 core: ● Black ● Blue ● Brown ● Grey ● Green/Yellow

### Technical Data

Voltage: 450/750V  
 Temperature range: -30°C to +90°C

### Relevant Standards

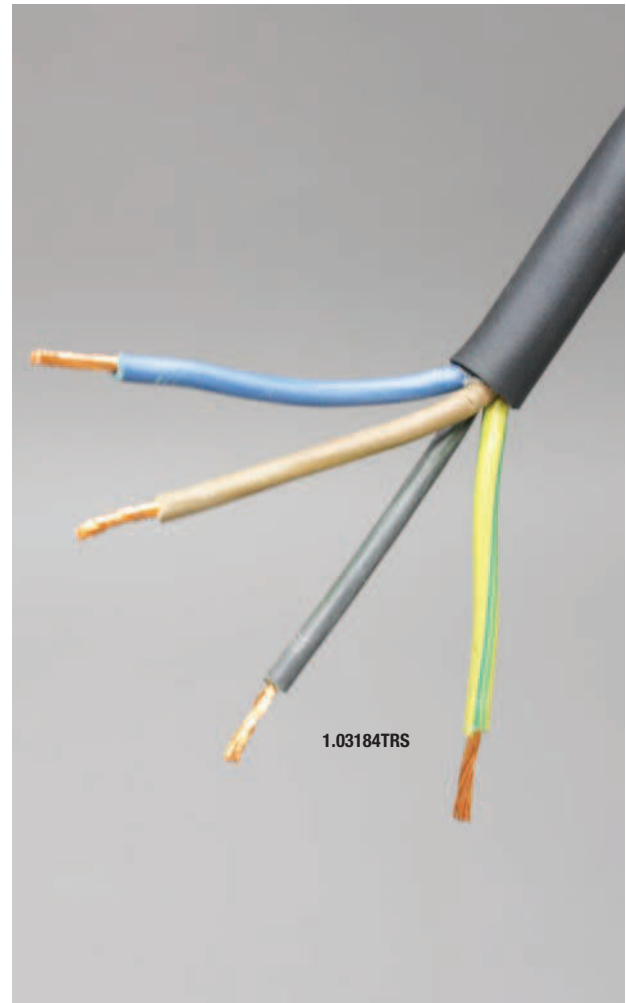
EN 50525-2-21, EN 60228  
 Flame Retardant according to IEC/EN 60332-1-2 Water Resistant according to AD7.

### Colours Available

● BLK

### Drum Sizes

Cut to size or 100mts.



Order Code	Description	Overall Diameter (mm)
0.75 3183TRS	0.75mm 3 Core Tough Rubber Flex	6.6
1.0 3183TRS	1.0mm 3 Core Tough Rubber Flex	8.74
1.5 3183TRS	1.5mm 3 Core Tough Rubber Flex	9.68
2.5 3183TRS	2.5mm 3 Core Tough Rubber Flex	11.48
0.75 3184TRS	0.75mm 4 Core Tough Rubber Flex	7.3
1.0 3184TRS	1.0mm 4 Core Tough Rubber Flex	9.63
1.5 3184TRS	1.5mm 4 Core Tough Rubber Flex	10.63
2.5 3184TRS	2.5mm 4 Core Tough Rubber Flex	12.6
0.75 3185TRS	0.75mm 5 Core Tough Rubber Flex	8.1
1.0 3185TRS	1.0mm 5 Core Tough Rubber Flex	11.8
1.5 3185TRS	1.5mm 5 Core Tough Rubber Flex	14
2.5 3185TRS	2.5mm 5 Core Tough Rubber Flex	16.2

**Note:** Core range is 1-19 (all except 3-5 are to order only) in diameters from 5.8mm to 22.1mm respectfully.

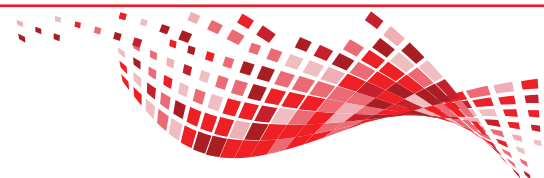
**Example:** 1.03184TRS = 1.0mm 4 Core Tough Rubber Sheathed Flex.

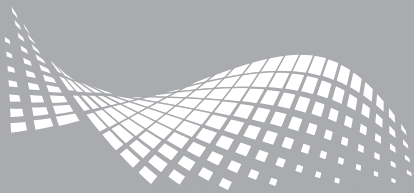


020 8507 1001

www.pewelectrical.com

sales@pewelectrical.com





# Flexible Cables

## Arctic Grade Flex 3183AG

### Application

Arctic grade PVC cords manufactured to BS 6004 are designed to withstand severe external temperatures and will remain flexible at temperatures down to -40°C. Making them particularly suitable for outdoor applications and for use where flexibility is required at sub zero temperatures. At normal temperatures the cable is very flexible, offering some of the characteristics usually found in elastomeric cables.

### Construction

Conductor: Class 5 flexible copper conductor  
Insulation: Arctic grade PVC (Polyvinyl Chloride)  
Sheath: Arctic grade PVC (Polyvinyl Chloride)  
Core Identification  
3 core: ● Blue ● Brown ● Green/Yellow

### Technical Data

Voltage: 300/500V  
Temperature Range: -40°C to +60°C

### Relevant Standards

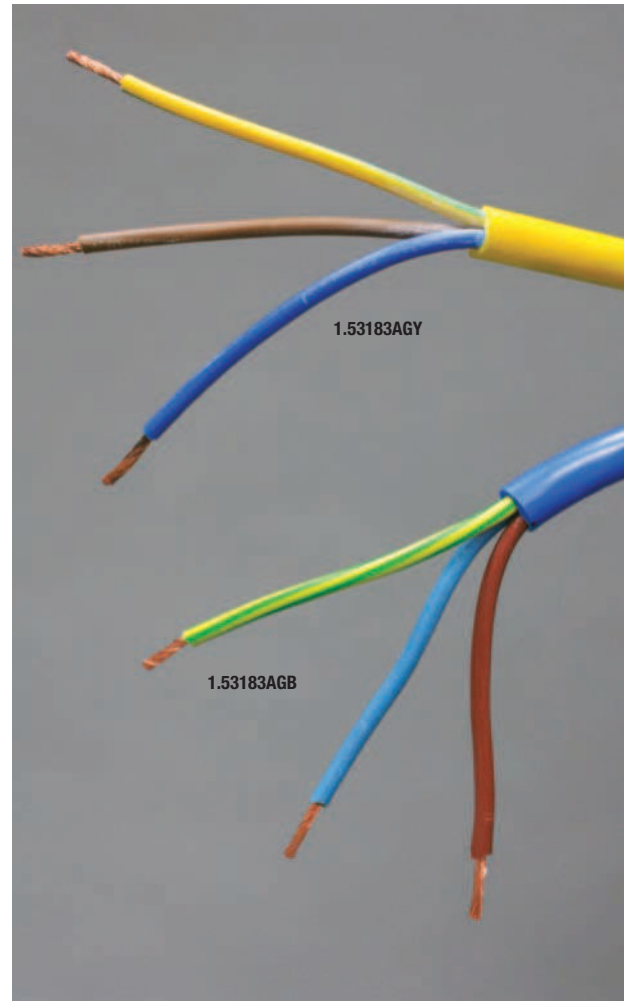
BS 6004, EN 60228  
Flame Retardant according to IEC/EN 60332-1-2

### Colours Available

● BLU and ● YEL

### Drum Sizes

Cut to size or 100mts.



Order Code	Description	Overall Diameter (mm)
1.5 3183AGY	1.5mm 3 Core Yellow Arctic Grade Flex	6.2
1.5 3183AGB	1.5mm 3 Core Blue Arctic Grade Flex	6.2
2.5 3183AGY	2.5mm 3 Core Yellow Arctic Grade Flex	9.2
2.5 3183AGB	2.5mm 3 Core Blue Arctic Grade Flex	9.2

**Example:** 1.53183AGY = 1.5mm 3 Core Yellow Arctic Grade Flex.



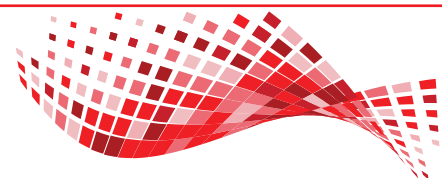
020 8507 1001



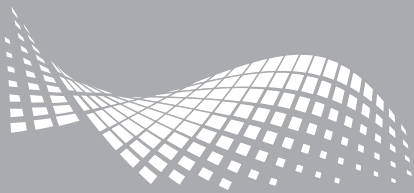
www.pewelectrical.com



sales@pewelectrical.com







# Wiring Cables

## Tri-Rated Cable

### Application

Heat resistant, flame retardant cable designed for use in the switch control, relay and instrumentation panels of power switchgear and for purposes such as internal connectors in rectifier equipment, motor starters and controllers. Tri-rated cable is also known as panel wire.

### Construction

Conductor: Class 5 flexible copper conductor  
 Insulation: PVC (Polyvinyl Chloride)

### Technical Data

Voltage: 0.5mm<sup>2</sup> - 1mm<sup>2</sup>: 300/500V  
 1.5mm<sup>2</sup> and above: 450/750V

Temperature Range: BS 6231: -15°C to +90°C

### Relevant Standards

EN 50525-2-31\*, BS 6231 Type CK, UL Subj.758, GSA C22.2 No. 210 (HD 21.7 S2) #LL246095, IEC/EN 60228

Flame Retardant according to IEC/EN 60332-1-2

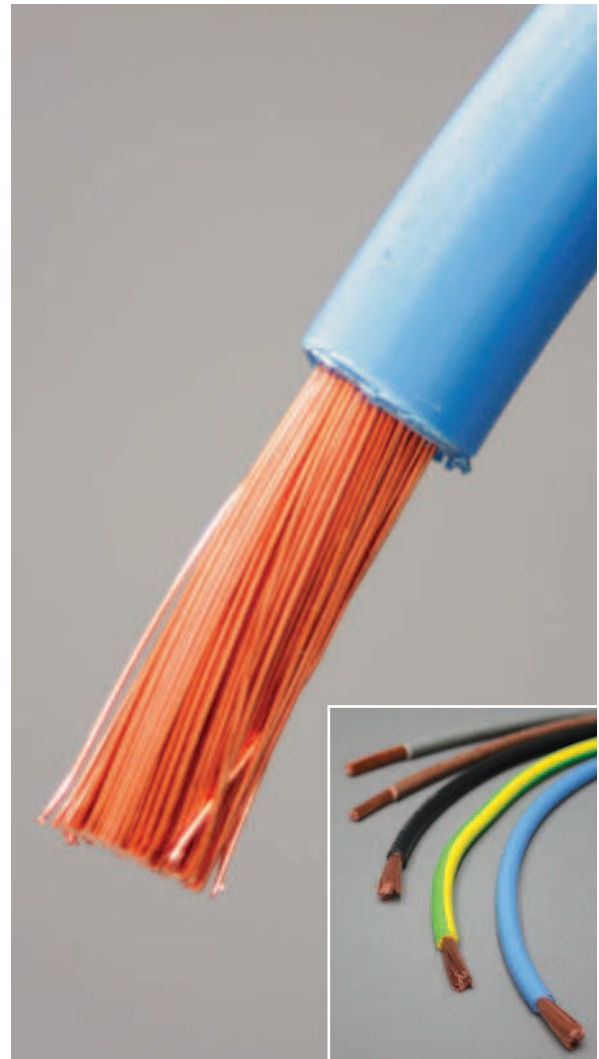
### Drum Sizes

0.75mm-4.0mm: 100mts.  
 6.0mm-35mm: Cut to size or 100mts.

Sizes above 35mm are cut to size.

### Colours Available:

- BLK
- BLU
- BRN
- EAR
- GRY
- ORA
- PIN
- RED
- VIO
- WHI
- YEL



Order Code	Description	Overall Diameter (mm)	Approximate AWG
0.75 TRI	0.75mm Tri-Rated Cable *	2.85	19
1.0 TRI	1.0mm Tri-Rated Cable *	3	18
1.5 TRI	1.5mm Tri-Rated Cable *	3.3	16
2.5 TRI	2.5mm Tri-Rated Cable *	3.75	14
4.0 TRI	4.0mm Tri-Rated Cable *	4.35	12
6.0 TRI	6.0mm Tri-Rated Cable *	4.85	10
10.0 TRI	10.0mm Tri-Rated Cable *	6.3	8
16.0 TRI	16.0mm Tri-Rated Cable *	8.1	6
25.0 TRI	25.0mm Tri-Rated Cable *	9.4	4
35.0 TRI	35.0mm Tri-Rated Cable *	10.9	2
50.0 TRI	50.0mm Tri-Rated Cable *	13.1	1
70.0 TRI	70.0mm Tri-Rated Cable *	15.1	2/0

Note: Cables marked with \* are available to order only.

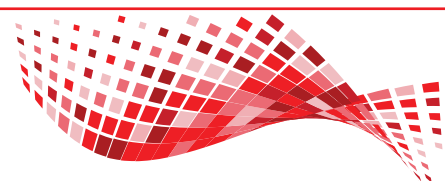
Example: 100mts 2.5TRI/BLK = 100mts x 2.5mm Tri-Rated Black.

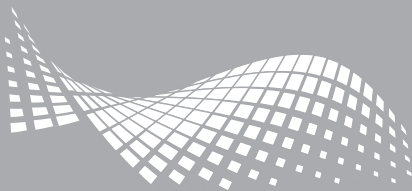


020 8507 1001

www.pewelectrical.com

sales@pewelectrical.com





# Power Cables

## Double Insulated Mains Cable

### Application

Fixed installation in dry or damp areas for lock circuits, domestic and light industrial wiring. Also used in connection to (smart)meters.

### Construction

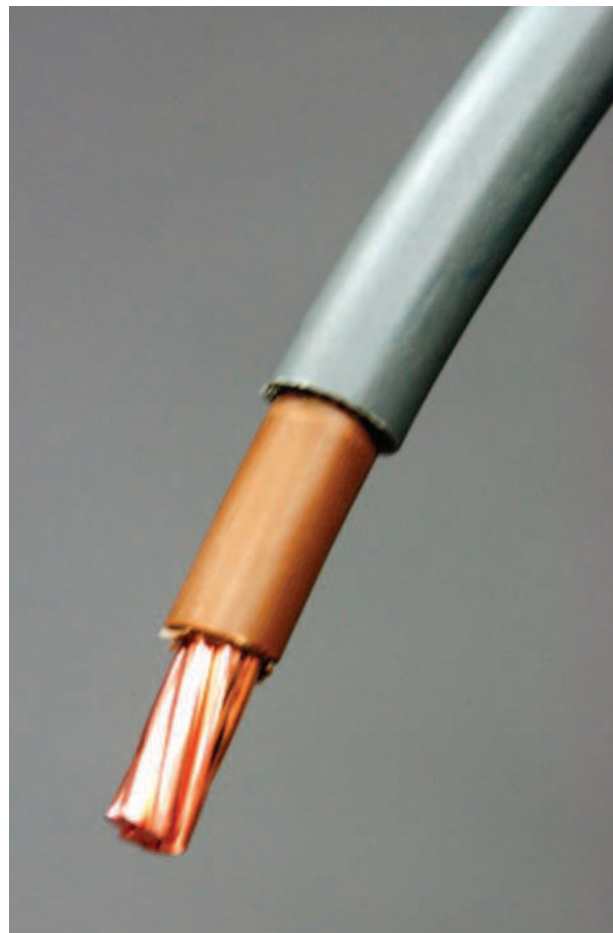
Conductor: 1mm<sup>2</sup>  
Insulation: PVC (Polyvinyl Chloride)  
Sheath: PVC (Polyvinyl Chloride)  
Insulation Colour: ● Brown or ● Blue.  
Sheath Colour: ● Grey

### Technical Data

Voltage: 300/500V.  
Temperature Range: -15°C to +70°C

### Relevant Standards

BS 6004, EN 60228  
Flame Retardant according to IEC/EN 60332-1-2



Order Code	Description	Overall Diameter (mm)
1.06181Y	1.0mm Double Insulated Mains Cable	4.1
10.06181Y	10.0mm Double Insulated Mains Cable *	8.1
16.06181Y	16.0mm Double Insulated Mains Cable *	9.3
25.06181Y	25.0mm Double Insulated Mains Cable *	11.1

Note: 6181Y cable is available in Grey/Brown and Grey/Blue. Please specify the colour you require. Cables marked with \* are available to order only.



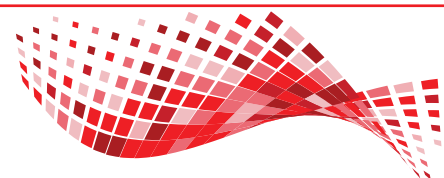
020 8507 1001

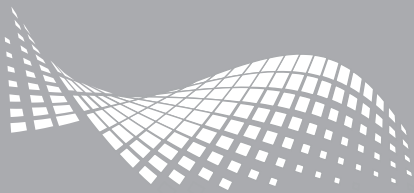


www.pewelectrical.com



sales@pewelectrical.com





# Steel Wired Armoured (SWA) PVC Cable

## Application

Multi-core PVC cable with steel wire armour (SWA). Power and auxiliary fixed wiring cables for use in power networks, underground, outdoor and indoor applications and for use in cable ducting.

## Construction

Conductor: Class 2 stranded copper conductor  
 Insulation: XLPE (Cross-Linked Polyethylene)  
 Bedding: PVC (Polyvinyl Chloride)  
 Armour: SWA (Steel Wire Armour)  
 Sheath: PVC (Polyvinyl Chloride)

## Technical Data

Voltage: 0.6/1kV  
 Temperature Range: -25°C to +90°C

## Relevant Standards

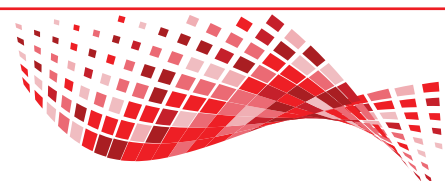
BS 5467, IEC/EN 60502-1, IEC/EN 60228  
 Flame Retardant according to IEC/EN 60332-1-2



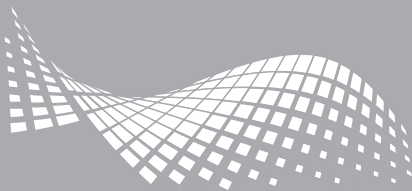
Cable Size	Order Code											
	Two Core				Three Core				Four Core			
	Cable	Gland Pack	Cleat	Overall Dia. (mm)	Cable	Gland Pack	Cleat	Overall Dia. (mm)	Cable	Gland Pack	Cleat	Overall Dia. (mm)
1.5mm	1.56942X *	BW20S	5	12.1	1.56943X *	BW20S	5	12.6	1.56944X *	BW20S	6	13.3
2.5mm	2.56942X *	BW20S	6	13.6	2.56943X *	BW20S	6	14.1	2.56944X *	BW20S	6	15.0
4.0mm	4.06942X *	BW20S	6	14.7	4.06943X *	BW20S	6	15.3	4.06944X *	BW20	7	16.4
6.0mm	6.06942X *	BW20	7	15.9	6.06943X *	BW20	7	16.6	6.06944X *	BW20	8	18.7
10.0mm	10.06942X *	BW25	8	18.0	10.06943X *	BW25	8	19.5	10.06944X *	BW25	9	21.1
16.0mm	16.06942X *	BW25	9	20.4	16.06943X *	BW25	9	21.6	16.06944X *	BW25	10	23.4

- Larger sizes (or larger core numbers, ie 5 or 7 core) of SWA cable are also normally available. **Please contact our sales team with your requirements.**
- All of the gland packs detailed in the above table are of standard 'BW' type. Please replace 'BW' with 'CW' for weatherproof gland packs.  
 ie For 6.0mm 4C SWA outdoor use, select CW20 weatherproof gland pack.
- Please note that SWA gland packs contain two complete glands up to size 32. Gland pack sizes of 40 and upwards contain one complete gland.

**Note:** Cables marked with \* are available to order only.







# LSZH Steel Wired Armoured (SWA) Cable

## Application

Multi-core LSZH cable with steel wire armour (SWA). Power and auxiliary fixed wiring cables for use in power networks, underground, outdoor and indoor applications and for use in cable ducting. For installation where fire, smoke emission and toxic fumes create a potential threat to life and equipment.

## Construction

Conductor : Class 2 stranded copper conductor  
 Insulation: XLPE (Cross-Linked Polyethylene)  
 Bedding: LSZH (Low Smoke Zero Halogen)  
 Armour: SWA (Steel Wire Armour)  
 Sheath: LSZH (Low Smoke Zero Halogen)

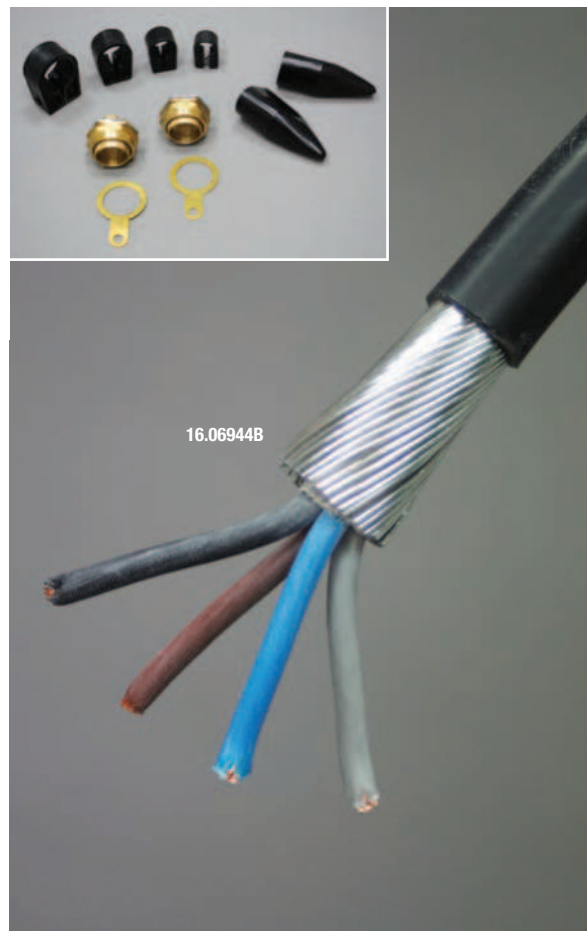
## Technical Data

Voltage: 0.6/1kV  
 Temperature Range: -20°C to +90°C

## Relevant Standards

BS 6724, BS EN/IEC 60228, BS EN/IEC 60754-1/2, BS EN 50267-2-1, BS EN/IEC 60502-1, BS EN/IEC 61034-2

Flame Retardant according to BS EN/IEC 60332-1-2, BS EN/IEC 60332-3-24 Cat C



Cable Size	Order Code											
	Two Core				Three Core				Four Core			
	Cable	Gland Pack	Cleat	Overall Dia. (mm)	Cable	Gland Pack	Cleat	Overall Dia. (mm)	Cable	Gland Pack	Cleat	Overall Dia. (mm)
1.5mm	1.56942B *	BW20S	5	12.1	1.56943B *	BW20S	5	12.6	1.56944B *	BW20S	6	13.3
2.5mm	2.56942B *	BW20S	6	13.6	2.56943B *	BW20S	6	14.1	2.56944B *	BW20S	6	15.0
4.0mm	4.06942B *	BW20S	6	14.7	4.06943B *	BW20S	6	15.3	4.06944B *	BW20	7	16.4
6.0mm	6.06942B *	BW20	7	15.9	6.06943B *	BW20	7	16.6	6.06944B *	BW20	8	18.7
10.0mm	10.06942B *	BW25	8	18.0	10.06943B *	BW25	8	19.5	10.06944B *	BW25	9	21.1
16.0mm	16.06942B *	BW25	9	20.4	16.06943B *	BW25	9	21.6	16.06944B *	BW25	10	23.4

■ All of the gland packs detailed in the above table are of standard 'BW' type. Please replace 'BW' with 'CW' for weatherproof gland packs or 'LSF' for low smoke and fume gland packs.

ie For 6.0mm 4C LSOH SWA outdoor use, select CW20 weatherproof gland pack.

■ Please note that SWA gland packs contain two complete glands up to size 32. Gland pack sizes of 40 and upwards contain one complete gland.

**Note:** Cables marked with \* are available to order only.



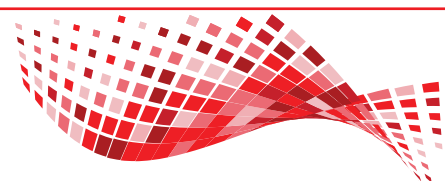
020 8507 1001

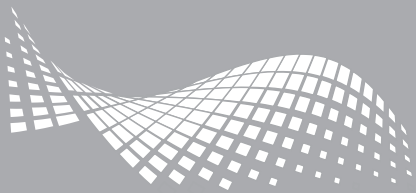


www.pewelectrical.com



sales@pewelectrical.com





# Power Cables

## PVC Flat Wiring Cable With Bare CPC

### Application

Domestic wiring cable. Can be installed in fixed installations in dry or damp premises clipped to surface, on trays or in free air where the risk of mechanical damage would not be an issue. Suitable for laying in conduit or trunking where mechanical protection is required.

### Construction

Insulation: PVC (Polyvinyl Chloride)  
 Sheath: PVC (Polyvinyl Chloride)  
 Core Identification:  
 2 core: ● Blue ● Brown  
 3 core: ● Brown ● Black ● Grey  
 Sheath Colour: ● Grey

### Technical Data

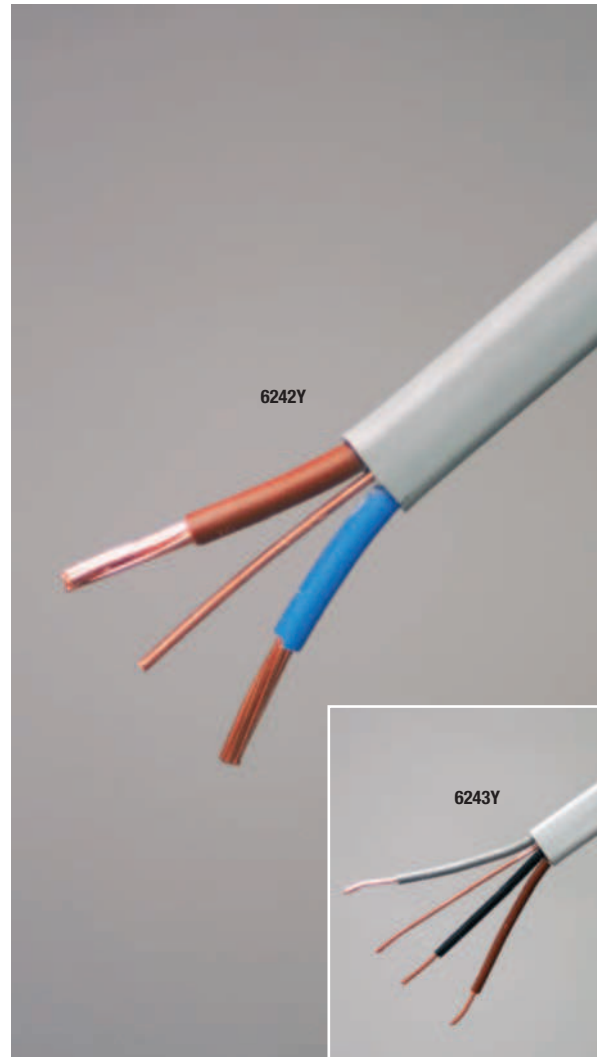
Voltage: 300/500V.  
 Temperature Range: -5°C to +70°C

### Relevant Standards

BS 6004, EN 60228  
 Flame Retardant according to IEC/EN 60332-1-2

### Drum Sizes

Cut to size or 100mts.



Order Code	Description	Dimensions (HxW)	Clip Ref (mm)
1.06242Y	1.0mm Flat Twin & Earth Cable	4.35 x 7.95	KF1.0
1.56242Y	1.5mm Flat Twin & Earth Cable	5.65 x 10.65	KF1.5
2.56242Y	2.5mm Flat Twin & Earth Cable	7.1 x 13.7	KF2.5
4.06242Y	4.0mm Flat Twin & Earth Cable	8.7 x 17.25	KF4.0
6.06242Y	6.0mm Flat Twin & Earth Cable	9.85 x 20	KF6.0
1.06243Y	1.0mm Flat Triple & Earth Cable	4.85 x 8.9	KF1.5
1.56243Y	1.5mm Flat Triple & Earth Cable	6.3 x 11.95	KF2.5
10.06242Y	10.0mm Flat Twin & Earth Cable	4.35 x 9.8 *	KF10.0
16.06242Y	16.0mm Flat Twin & Earth Cable	4.85 x 11.2 *	KF16.0

Note: Cables marked with \* are available to order only.

Flat wiring cables are also available in LSZH (Low Smoke Zero Halogen). Please contact our sales team for further information.

Example: 100mts 1.06243Y = 100mts x 1.0mm Triple & Earth Cable.

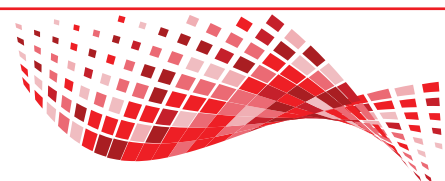
Example: 100mts 2.56242Y = 100mts x 2.5mm Twin & Earth Cable.



020 8507 1001

www.pewelectrical.com

sales@pewelectrical.com



# Cable Accessories

## PVC Cable Cleats

One piece polyethylene cleats take a single bolt fixing for cables up to 50mm in diameter. They are suitable for both indoor and outdoor use and can be used in conjunction with metals and other material without electrolytic or chemical reaction. PVC cable cleats are widely used for securing Steel Wired Armoured (SWA) cables.

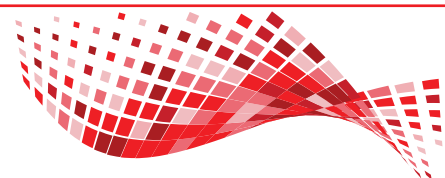
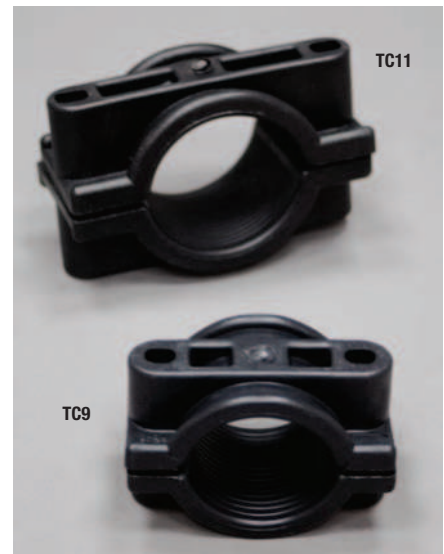
Order Code	Description	Order Code	Description
NP5	12.7mm Diameter Cleat	NP11	27.7mm Diameter Cleat
NP6	15.2mm Diameter Cleat	NP12	30.4mm Diameter Cleat
NP7	17.8mm Diameter Cleat	NP14	35.6mm Diameter Cleat
NP8	20.3mm Diameter Cleat	NP16	40.6mm Diameter Cleat
NP9	22.8mm Diameter Cleat	NP18	45.7mm Diameter Cleat
NP10	25.4mm Diameter Cleat	NP20	50.8mm Diameter Cleat



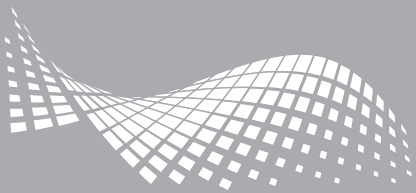
## 2 Part Cable Cleats

2 part cable cleats are designed to secure very large power cables between 50mm and 105mm in diameter. They can also be used to fix hydraulic hoses and pipes.

Order Code	Description
TC9	Two Part Fixing Cleat 50-57mm Diameter
TC10	Two Part Fixing Cleat 57-64mm Diameter
TC11	Two Part Fixing Cleat 64-70mm Diameter
TC12	Two Part Fixing Cleat 70-76mm Diameter
TC14	Two Part Fixing Cleat 76-85mm Diameter
TC15	Two Part Fixing Cleat 82-105mm Diameter







## Cable Accessories

### P Clips For Flexible Conduit And Cable

P Clips are manufactured from plated steel with a PVC insert. They are suitable for fixing both flexible conduits and cables, with intermediate sizes being accommodated by removing the PVC insert.

Order Code	Description	Fixing Hole Diameter (mm)	Pack Quantity
PC10	10mm Diameter P Clip	5	10
PC12	12mm Diameter P Clip	5	10
PC16	16mm Diameter P Clip	5	10
PC20	20mm Diameter P Clip	5	10
PC25	25mm Diameter P Clip	5	10
PC32	32mm Diameter P Clip	5	10
PC40	40mm Diameter P Clip	12	5
PC50	50mm Diameter P Clip	12	5
PC63	63mm Diameter P Clip	12	5



### Mineral Insulated PVC Coated Cable Clips

Although these clips are suitable for fixing most types of cable, their LSOH properties make them ideal for fire rated cables.

Order Code	Description	Box Qty
RCHL32	PVC Coated MI Clip Max Diameter 8.0mm	50
RCHL34	PVC Coated MI Clip Max Diameter 8.5mm	50
RCHL37	PVC Coated MI Clip Max Diameter 9.0mm	50
RCHL40	PVC Coated MI Clip Max Diameter 9.5mm	50

**Note:** PVC coated clips are available in Black (BLK), Red (RED) and White (WHI).



### Spiral Binding

Spiral binding offers a simple and fast method of binding and protecting cable looms prior to installation or in situ. It enables cables to be directed from any point and will follow any route taken by the cable.

Order Code	Description	Pack Qty (mts)
1NFP	Spiral Binding For Looms 1.6-3.2mm Diameter	30
2NFP	Spiral Binding For Looms 4.8-8.2mm Diameter	30
3NFP	Spiral Binding For Looms 9.5-19.2mm Diameter	30



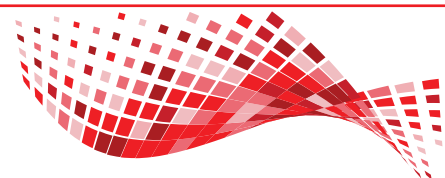
020 8507 1001

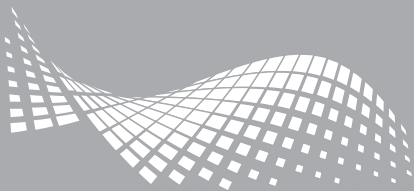


[www.pewelectrical.com](http://www.pewelectrical.com)



[sales@pewelectrical.com](mailto:sales@pewelectrical.com)



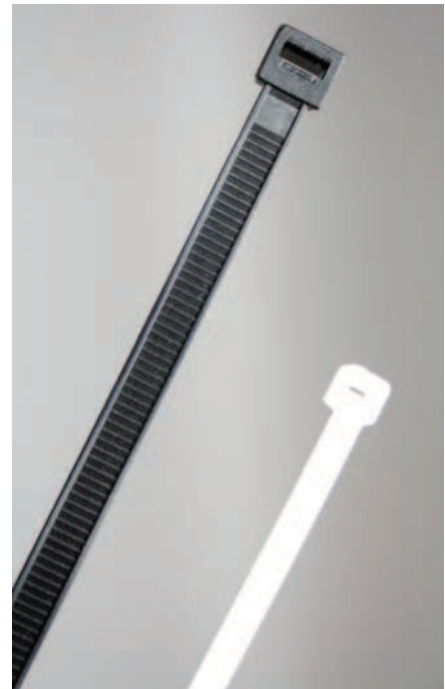


## Cable Accessories

### Nylon Cable Ties

Nylon cable ties are inert to fungus and mould and are resistant to petrol, oil, grease and alkalis. They are self-extinguishing to U.L.94V2 and can be tensioned by hand. They are supplied in bags of 100.

Order Code	Description
7045N	100 x 2.5mm White Cable Ties (Bag 100)
7045B	100 x 2.5mm Black Cable Ties (Bag 100)
7047N	160 x 4.5mm White Cable Ties (Bag 100)
7047B	160 x 4.5mm Black Cable Ties (Bag 100)
7048N	200 x 4.8mm White Cable Ties (Bag 100)
7048B	200 x 4.8mm Black Cable Ties (Bag 100)
7051N	370 x 4.8mm White Cable Ties (Bag 100)
7051B	370 x 4.8mm Black Cable Ties (Bag 100)
7056N	300 x 4.8mm White Cable Ties (Bag 100)
7056B	300 x 4.8mm Black Cable Ties (Bag 100)
7058N	370 x 7.6mm White Cable Ties (Bag 100)
7058B	370 x 7.6mm Black Cable Ties (Bag 100)



### Stainless Steel Cable Ties

Stainless Steel cable ties are an ideal alternative for when nylon ties are not suitable. They have excellent resistance to abrasion, corrosion, radiation, weathering and extremes of temperature. Also, they have a greater load carrying capacity and may be used for general strapping applications. They are supplied in bags of 100.

Order Code	Description
SRBT30S	150 x 4.6mm (6") S/Steel Cable Ties (Bag 100)
SRBT50S	225 x 4.6mm (9") S/Steel Cable Ties (Bag 100)
SRBT100S	360 x 4.6mm (14") S/Steel Cable Ties (Bag 100)
SRBT115S	520 x 4.6mm (20") S/Steel Cable Ties (Bag 100)
DSTG2	Application Tool



### LSZH (Low Smoke Zero Halogen) Cable Ties

Order Code: **1783B**

These are made from a self-extinguishing, V0:UL94 halogen-free, fire proof material. Measuring 300mm long and 4.6mm wide and supplied in a bag of 100, these multi-toothed ratchet cable ties enable strong locking and a high tensile strength. These cable ties have been tested and are approved for use on London Underground projects.

Ideal for use in both demanding environments and general applications where limited fire hazard properties are required, such as public buildings, factories, offshore, railway stations and the underground.



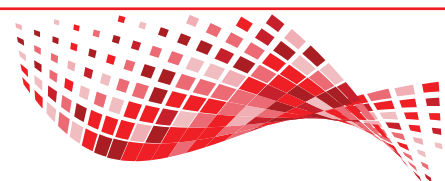
020 8507 1001



[www.pewelectrical.com](http://www.pewelectrical.com)



[sales@pewelectrical.com](mailto:sales@pewelectrical.com)



## Cable Accessories

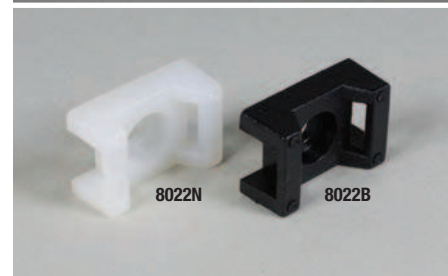
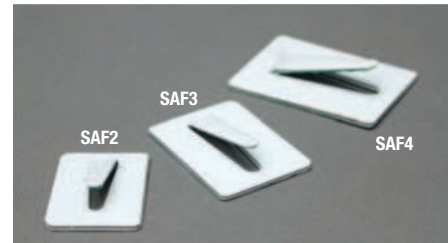
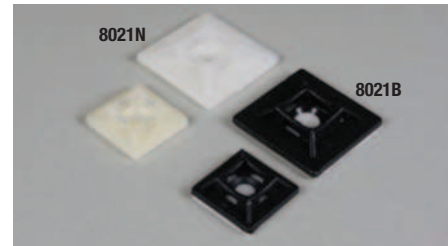
### Self Adhesive Mounts and Cable Tie Cradles

Self adhesive cable tie bases are available in two sizes, either 19x19mm or 27x27mm and in either black or white. They are supplied in bags of 100.

Available in white only, self adhesive clips are suitable for routing cables inside cabinets or racks. These clips can be used to support cables ties or the cable itself. They are ideal for noise sensitive work areas, like hospitals or libraries and can be used on both steel and plastic surfaces. These clips are supplied in bags of 100.

Cable tie cradles hold cable ties firmly in place, increasing both their resistance and resilience. Supplied with holes for fixing screws, cable tie cradles are available in either black and white and are supplied in bags of 100.

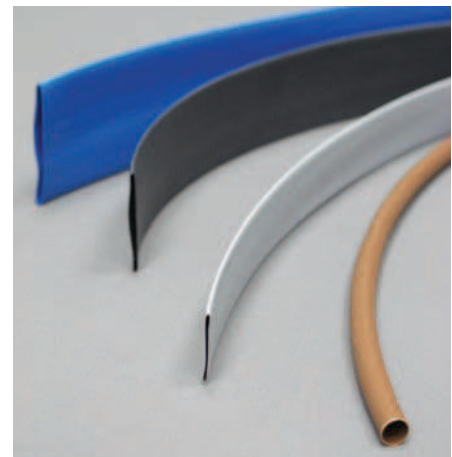
Order Code	Description
8020N	Self Adhesive White Cable Tie Base 19 x 19mm
8020B	Self Adhesive Black Cable Tie Base 19 x 19mm
8021N	Self Adhesive White Cable Tie Base 27 x 27mm
8021B	Self Adhesive Black Cable Tie Base 27 x 27mm
SAF2	Self Adhesive Clip - 8mm Diameter Cable
SAF3	Self Adhesive Clip - 12mm Diameter Cable
SAF4	Self Adhesive Clip - 16mm Diameter Cable
8022N	White Cable Tie Cradle
8022B	Black Cable Tie Cradle



### Heat Shrink Sleeving

Heat shrink sleeving is suitable for general insulation, cable marking and colour coding. It has a shrink ratio of 2:1 and will operate between temperatures of -55 to +135°C. Each pack contains 4 colours, brown, blue, black and grey.

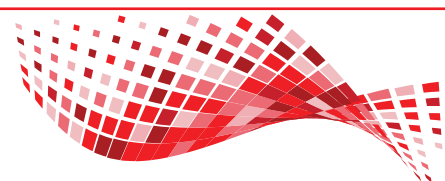
Order Code	Pre-Shrink Dia (mm)	Post-Shrink Dia (mm)	Lengths Per Pack (250mm)			
			Brown	Blue	Black	Grey
HSK3	3.2	1.6	3	3	3	3
HSK6	6.4	3.2	3	3	3	3
HSK12	12.8	6.4	3	3	3	3
HSK19	19.0	9.5	2	2	2	2
HSK25	25.0	12.5	2	2	2	2



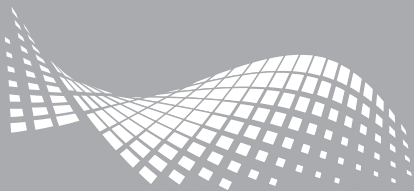
### Nylon Cable Tie Fixings

Cable tie masonry mounts are screwed into a 6mm diameter hole and then the tie is fed through the aperture in the screw head. Cable tie fixings with rawlplug and fixing pin work by inserting a two part rawlplug into a pre-drilled hole and then securing it by hammering in the fixing pin, thus leaving a wall mounted cable tie facility. Both of the above are supplied in bags of 100.

Order Code	Description
CTMM1	Cable Tie Masonry Mount
CTS200	Cable Tie Fixing With Rawlplug And Fixing Pin







# Cable Accessories

## Armoured Cable Gland Packs

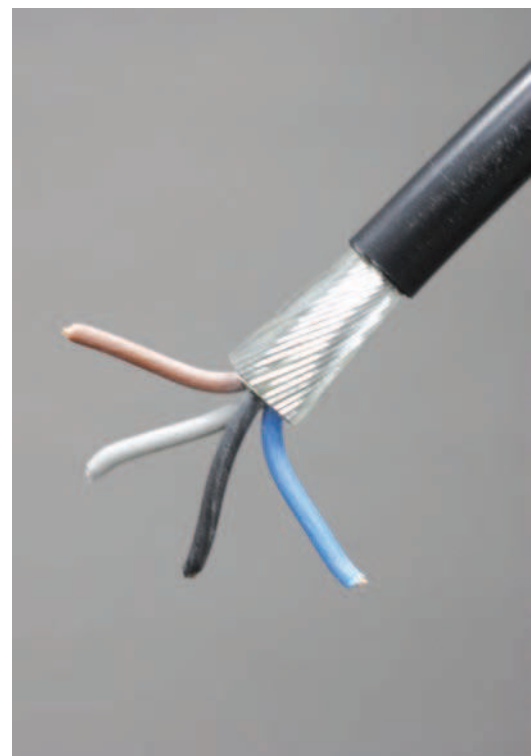
A complete armoured cable gland consists of one gland, shroud, earth tag and locknut. Sizes 20mm to 32mm contain 2 complete glands, while gland sizes 40mm to 75mm contain one complete gland. BW gland packs are suitable for indoor use, CW gland packs for outdoor use and LSF (low smoke and fume) gland packs are suitable for use when the fire, smoke emission or toxic fumes would create a threat to life and equipment.



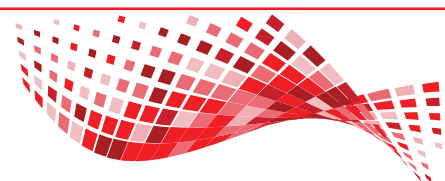
Order Code	Description	Cable Diameter Min-Max (mm)	Glands Per Pack
20S	SWA Gland Pack 20mm Small	11.4-15.9	2
20	SWA Gland Pack 20mm	15.0-20.9	2
25	SWA Gland Pack 25mm	20.3-27.4	2
32	SWA Gland Pack 32mm	26.0-33.9	2
40	SWA Gland Pack 40mm	31.0-40.4	1
50	SWA Gland Pack 50mm	36.5-46.7	1
63	SWA Gland Pack 63mm	48.9-59.4	1
75	SWA Gland Pack 75mm	62.8-73.4	1

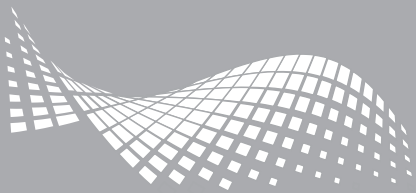
Please specify which type of gland pack you require, BW, CW or LSF.

**Examples:** BW20 = 20mm Indoor SWA Gland Pack.  
 CW25 = 25mm Outdoor SWA Gland Pack,



SWA Cable Size	Approx Rating (Amps)	Two Core		Three Core		Four Core	
		Gland Pack	Cleat	Gland Pack	Cleat	Gland Pack	Cleat
1.5mm	16	BW20S	5	BW20S	5	BW20S	6
2.5mm	20	BW20S	5	BW20S	6	BW20S	6
4.0mm	27	BW20S	6	BW20S	6	BW20	6
6.0mm	34	BW20	6	BW20	7	BW20	7
10.0mm	46	BW25	7	BW25	8	BW25	8
16.0mm	62	BW25	8	BW25	9	BW25	10
25.0mm	80	BW25	9	BW25	10	BW32	11
35.0mm	99	BW32	10	BW32	11	BW40	12





# Cable Accessories

## Brass CXT Gland Packs

CXT gland packs are IP66 rated and are suitable for use with flexible armoured cables such as SY and CY screened control flex. The IP66 watertight seal enables the glands to be used for both indoors and outdoors applications. A complete gland consists of one gland, two brass washers, one locknut and one shroud.



Order Code	Description	Cable Diameter Min-Max (mm)	Sets Per Pack
CXT20S	SWA Gland Pack 20mm Small	6.1-11.6	2
CXT20	SWA Gland Pack 20mm	9.8-13.9	2
CXT25	SWA Gland Pack 25mm	11.1-19.9	2
CXT32	SWA Gland Pack 32mm	18.3-33.9	2
CXT40	SWA Gland Pack 40mm	31.0-40.4	1
CXT50	SWA Gland Pack 50mm	36.5-46.7	1
CXT63	SWA Gland Pack 63mm	44.9-59.4	1



## Cable Marker Dispenser

This cable marking system consists of a handy dispenser, featuring a tear-off mechanism, which is filled with 10 rolls of self adhesive vinyl cloth tape. Rolls are 5mm wide and 2.4mts long and contain about 500 markings. The dispenser contains numbers 0 to 9 (one roll of each).



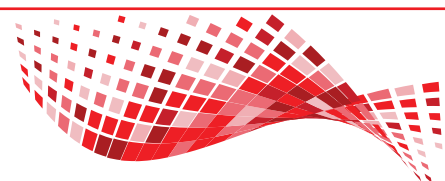
Order Code	Description
CMD1	Cable Marker Dispenser-10 rolls (0-9 inc) - Black On White

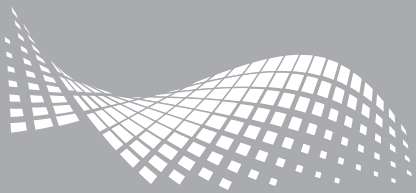
## Cable Marker Kit

An 18 compartment kit containing 4500 markers.

Order Code	Description
CMK4500/18	Cable Marker Kit Containing 4500 Markers And An Application Tool. Consisting Of 250 Of Each Number, 0-9 And Also The Letters, L, N, R, S, T, +, - And $\frac{1}{2}$ .

Note: The application tool is available separately - Order Code : **CMAT1**





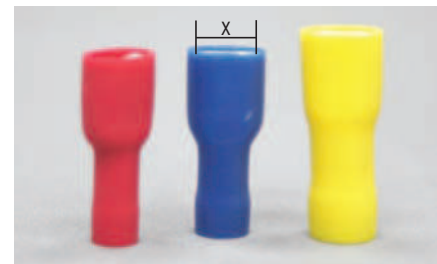
# Cable Accessories

## Pre-Insulated Crimp Terminals

Pre-insulated crimp terminals are suitable for cable sizes 0.5mm<sup>2</sup> - 6.0mm<sup>2</sup>. The insulation sleeve is colour coded in red, blue or yellow to indicate cable size. All pre-insulated crimp terminals are sold in bags of 100.

### Fully Insulated Female Push-On Terminals

X	Red (0.5-1.5mm)	Blue (1.5-2.5mm)	Yellow (4.0-6.0mm)
2.8mm	1231	-	-
4.8mm	1218	1219	-
6.3mm	1207	1213	1215



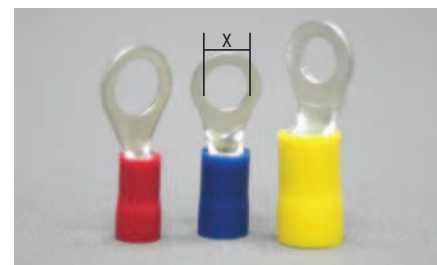
### Splice Terminals

X	Red (0.5-1.5mm)	Blue (1.5-2.5mm)	Yellow (4.0-6.0mm)
N/A	2409	2410	2411



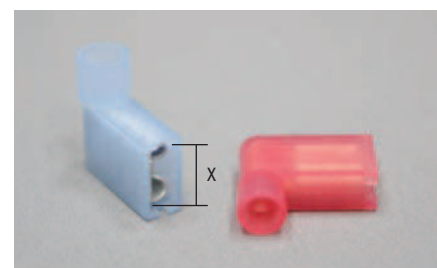
### Ring Terminals

X	Red (0.5-1.5mm)	Blue (1.5-2.5mm)	Yellow (4.0-6.0mm)
3.7mm	1602	1613	1626
4.3mm	1604	1614	1624
5.3mm	1606	1616	1625
6.5mm	1607	1618	1627
8.5mm	1608	1619	1629



### Fully Insulated Female Angled Push-On Terminals

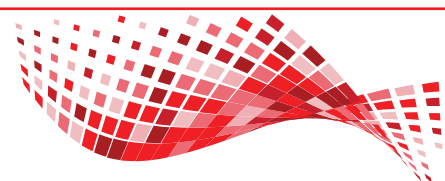
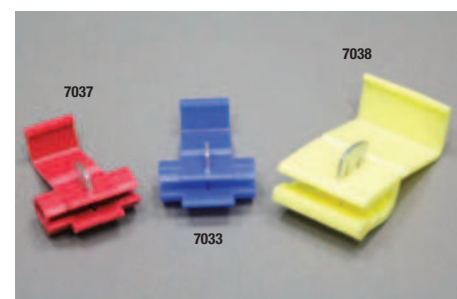
X	Red (0.5-1.5mm)	Blue (1.5-2.5mm)	Yellow (4.0-6.0mm)
6.3mm	1236	1237	1238



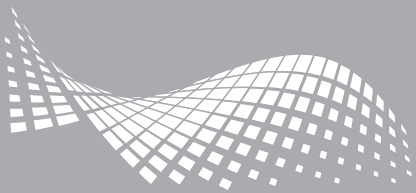
### Self Stripping Connectors - Scotchlok Type

Scotchlocks offer excellent electrical connection without cutting tap or run wires. They are simple to use (applied with pliers) and offer three types of connection: tap, low voltage and pigtail. Pack quantity is 100.

Colour And Size	Red (0.5-1.5mm)	Blue (1.5-2.5mm)	Yellow (4.0-6.0mm)
Order Code	7037	7033	7038







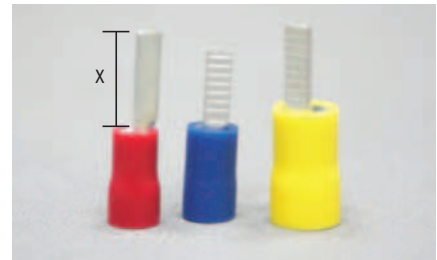
# Cable Accessories

## Pre-Insulated Crimp Terminals

Pre-insulated crimp terminals are suitable for cable sizes 0.5mm<sup>2</sup> - 6.0mm<sup>2</sup>. The insulation sleeve is colour coded in red, blue or yellow to indicate cable size. All pre-insulated crimp terminals are sold in bags of 100.

### Blade Terminals

X	Red (0.5-1.5mm)	Blue (1.5-2.5mm)	Yellow (4.0-6.0mm)
10.0mm	-	2435	2437
11.0mm	2433	-	-
14.0mm	-	-	-
18.0mm	2434	2436	2438



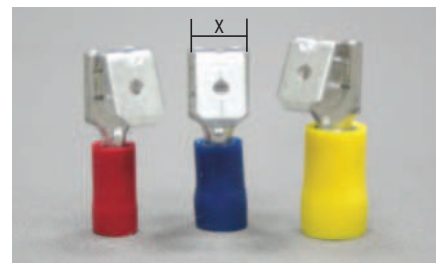
### Pin Terminals

X	Red (0.5-1.5mm)	Blue (1.5-2.5mm)	Yellow (4.0-6.0mm)
9.0mm	2430	2431	-
12.0mm	2427	2428	-
14.0mm	-	-	2429



### Piggy Back Terminals

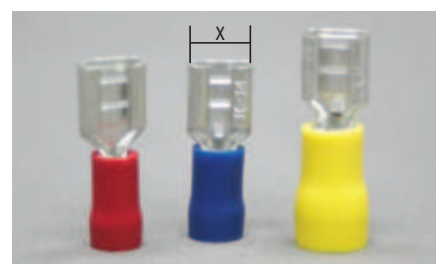
X	Red (0.5-1.5mm)	Blue (1.5-2.5mm)	Yellow (4.0-6.0mm)
6.3mm	1205	1211	1235



### Female Push-On Terminals

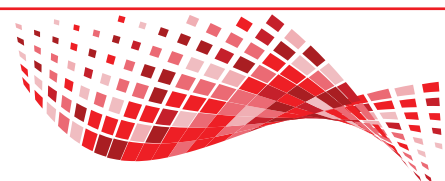
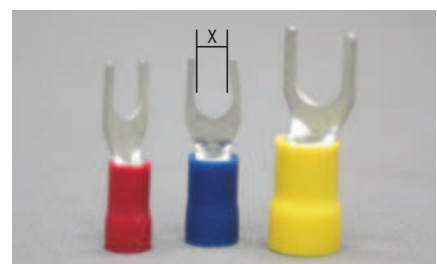
X	Red (0.5-1.5mm)	Blue (1.5-2.5mm)	Yellow (4.0-6.0mm)
2.8mm	1201	-	-
4.8mm	1203	1208	-
6.3mm	1204	1210	1214
9.5mm	-	-	1217

**Example:** Female push-on terminal for 2.5mm cable = 1210



### Fork Terminals

X	Red (0.5-1.5mm)	Blue (1.5-2.5mm)	Yellow (4.0-6.0mm)
3.2mm	2001	2010	-
3.7mm	2002	2011	2023
4.3mm	2006	2014	2020
5.3mm	2008	2017	2021
6.5mm	2009	2019	2022



# Cable Accessories

## Spade Terminals

X	Red (0.5-1.5mm)	Blue (1.5-2.5mm)	Yellow (4.0-6.0mm)
6.3mm	1206	1212	1216



## Flex End Terminals

Order Code	Description	Colour Code
VICE0505	Flex End Terminal For 0.5mm <sup>2</sup> Cable	White
VICE7575	Flex End Terminal For 0.75mm <sup>2</sup> Cable	Blue
VICE1010	Flex End Terminal For 1.0mm <sup>2</sup> Cable	Red
VICE1515	Flex End Terminal For 1.5mm <sup>2</sup> Cable	Black
VICE2525	Flex End Terminal For 2.5mm <sup>2</sup> Cable	Grey
VICE4040	Flex End Terminal For 4.0mm <sup>2</sup> Cable	Orange
VICE6040	Flex End Terminal For 6.0mm <sup>2</sup> Cable	Green
VICE0010	Flex End Terminal For 10.0mm <sup>2</sup> Cable	Brown



## Closed End (Insulated) Terminals

Conductor And Size	(1.0-1.75mm)	(1.0-2.5mm)	(2.0-5.5mm)
Order Code	2423	2422	2424

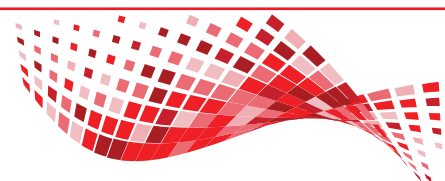
## Uninsulated Copper Terminals

Hole Size	6mm Stud	8mm Stud	10mm Stud	12mm Stud	14mm Stud	16mm Stud	Through Splice
10mm	7110M6	7110M8	7110M10	7110M12	-	-	7110THRO
16mm	7116M6	7116M8	7116M10	7116M12	-	-	7116THRO
25mm	7125M6	7125M8	7125M10	7125M12	-	-	7125THRO
35mm	7135M6	7135M8	7135M10	7135M12	-	-	7135THRO
50mm	7150M6	7150M8	7150M10	7150M12	-	-	7150THRO
70mm	7170M6	7170M8	7170M10	7170M12	-	-	7170THRO
95mm	-	7195M8	7195M10	7195M12	7195M14	7195M16	7195THRO
120mm	-	71120M8	71120M10	71120M12	71120M14	71120M16	71120THRO
150mm	-	-	71150M10	71150M12	71150M14	71150M16	71150THRO
185mm	-	-	71185M10	71185M12	71185M14	71185M16	71185THRO
240mm	-	-	-	71240M12	71240M14	71240M16	71240THRO



Uninsulated copper terminals are manufactured from seamless copper tube and are tested to comply with BS4579.

**Example:** 7125M10 is a 25mm<sup>2</sup> copper terminal with an M10 diameter fixing hole.



# Cable Accessories

## Insulated And Uninsulated Terminal Kits

We offer a number of terminal kits containing a selection of either insulated crimp terminals or uninsulated copper tube terminals. Kits are available both with and without crimping tools and can easily be topped up from our selection of terminals.

Order Code	Description
TK1	Assortment of 12 popular pre-insulated crimp terminals (1.5-6.0mm). Complete with a hand ratchet crimp tool.
	<b>Kit Includes:</b> 1210, 1614, 2006, 2427, 2428, 1625, 1627 1204, 1606, 1607, 1616 and 2010



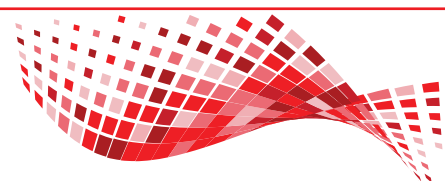
Order Code	Description
TK2	Assortment of 6 popular uninsulated copper tube terminals (6-16mm). Complete with a hand ratchet crimp tool.
	<b>Kit Includes:</b> 7106M6, 7106M8, 7110M6, 7110M8, 7116M6 and 7116M8



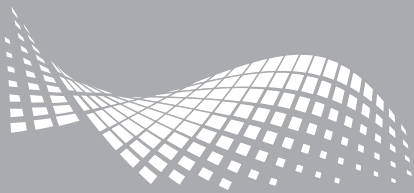
Order Code	Description
TK3	Assortment of 16 popular pre-insulated crimp terminals (1.5-6mm).
	<b>Kit Includes:</b> 1204, 1604, 1607, 1618, 2409, 2427, 1210, 1606, 1616 1614, 2410, 2428, 1627, 1625, 2411 and 2429



Order Code	Description
TK4	Assortment of 12 popular uninsulated copper tube terminals (10-16mm).
	<b>Kit Includes:</b> 7110M6, 7110M10, 7116M8, 7125M6, 7125M8 7125M10, 7135M8, 7135M10, 7135M12, 7150M6 7150M8 and 7150M10



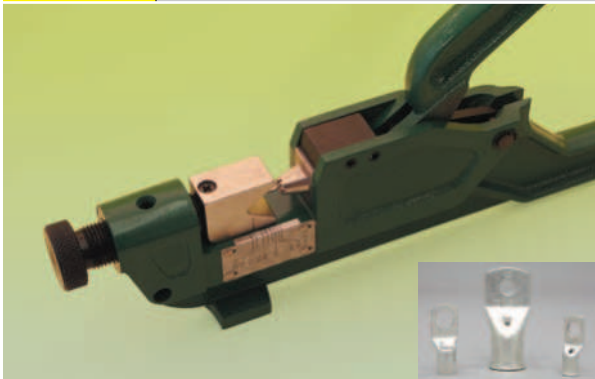




# Cable Accessories

## Compression, Cutting And Stripping Tools

Order Code	Description
CT25150	Non ratchet heavy duty crimping tool for copper tube terminals size 25mm-150mm.



Order Code	Description
9018	Ratchet crimping tool for copper tube terminals size 10mm-16mm.



Order Code	Description
9014	Ratchet crimping tool for pre-insulated terminals size 0.5mm-6.0mm.



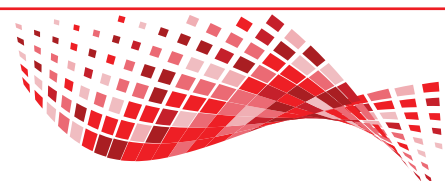
Order Code	Description
ESA0760C	Heavy duty ratchet crimping tool for insulated crimp terminals size 0.5mm-6mm. Designed for frequent use. Features low pressure grip for comfort.

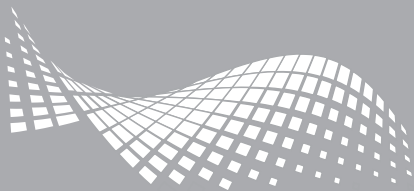


Order Code	Description
9009	Ratchet crimping tool for fully insulated female angled push-on terminals 6mm.



Order Code	Description
CS629	Cable sheath stripper. Designed to strip cable sheath on cables 6.0 to 29mm in diameter. It features a self locking adjustable cutting depth for sheath thickness.





# Cable Accessories

## Compression, Cutting And Stripping Tools

Order Code	Description
COC5862	Coaxial cable stripper. Designed to strip cable sheath from coaxial TV cables 4.8 to 7.5mm in diameter, i.e. RG58 and RG59 TV cable. It can also be adjusted to strip RG62 TV cable by means of an hexagon key, which is supplied.



Order Code	Description
SAS618	Self adjusting insulation stripper. Well suited for repetitive tasks, the tool adjusts to suit the cable cross section automatically. Suitable for stripping cables from 6.0 to 18mm in dia.



Order Code	Description
KT1AS	A versatile low cost tool that will strip, crimp and cut PVC cables from 0.5mm-6.0mm.



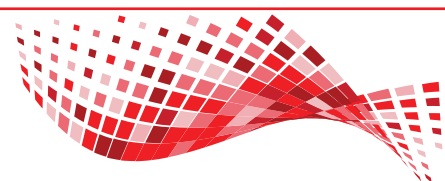
Order Code	Description
H35/2	Single hand action, professional cable stripper, featuring jaws that automatically stay open so that the cable can be removed without crushing. suitable for cables 0.25mm-6.0mm offering a maximum strip length of 22mm.



Order Code	Description
7083	Medium duty cable cutter for cables up to 50mm <sup>2</sup> (14mm diameter).



Order Code	Description
DCC500HR	Hand ratchet cable cutter for cutting PVC sheathed copper and aluminium cables up to 500mm <sup>2</sup> (55mm diameter).





PEW Electrical  
Distributors

# WhatsUp?

## We are on WhatsApp!

Send us the image of  
the parts that need identifying!



What are  
those?

VEGA and  
Dewhurst  
pushbuttons!





Unit 1 The iO Centre  
59-71 River Road  
Barking  
Essex  
IG11 0DR  
sales@pewelectrical.com  
0208 507 1001

**[www.pewelectrical.com](http://www.pewelectrical.com)**



Serving the lift & escalator industry since 1988