



PEW Electrical Distributors

## TFT Displays



## IRIS 4.3"

High resolution landing and car position indicator



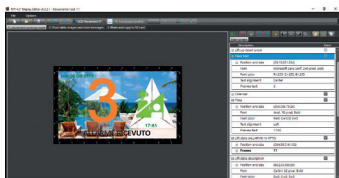
### MAIN FEATURES

- Easy configuration via onboard menu or PC with SIRIO Software
- **Onboard speaker** for speech (car) and gong (landing)
- Updating by microSD Card or **auto update via USB Stick**
- Customisable backgrounds, arrows, floors and signals
- **EN 81-70 compliant**
- ECO Energy saving system mode (stand-by switch off)
- Easy keypad for the selection of the main features (gong volume, communication interface, first floor, brightness, stand-by duration)
- Emergency light functionality
- Communication interface: Vega serial, RS485, CAN, parallel and magnetic sensors
- Mounting: protection case
- Mounting: horizontal and vertical
- Compact design: 110mm x 70mm x 20mm
- **OPTION: EN81-71 Antivandal Version CAT 2, 10mm Glass with Steel frame**

Dimensions: 4.3"  
 Visible area: 95.3 x 53.8mm.  
 Resolution: 480(RGB) x 320 -QVGA  
 Pixel (mm): 0.198x0.198mm.  
 Colours: 65,000  
 Energy consumption: 220mA  
 Power supply: 12/24 Vdc  
 Temperature range: -20/+70°C  
 Encumbrance: 160x80x22mm



4.3" with AV Frame and Lens



### SIRIO SOFTWARE

- Intuitive dedicated programming software
- Easily customise your TFT layout
- Inbuilt fonts and arrow design options
- Change display orientation
- Export to microSD Card for display update

### ORDER CODES

TFT430PRS: IRIS 4.3" TFT, for 2mm plate, direct parallel signals or with SNV201ENC-VG (binary, gray, 1PF) with onboard Flash Drive (USB update)

TFT430PARSER: IRIS 4.3" TFT, for 2mm plate, direct parallel signals or VEGA Serial with onboard Flash Drive

SNV201ENC-VG: VEGA TFT Encoder with Speech for Binary, Gray, 1PF, Standalone

SNV201/1WSPK: 1Watt Speaker (for speech)

SNV201/5WSPK: 5Watt Speaker (for speech)

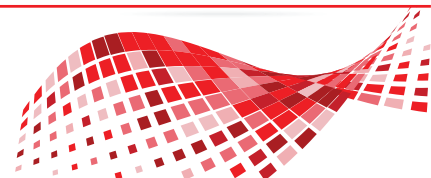
SNV201/FIX: DIN Rail Fixing for PCB

**PEW Electrical Distributors Ltd**

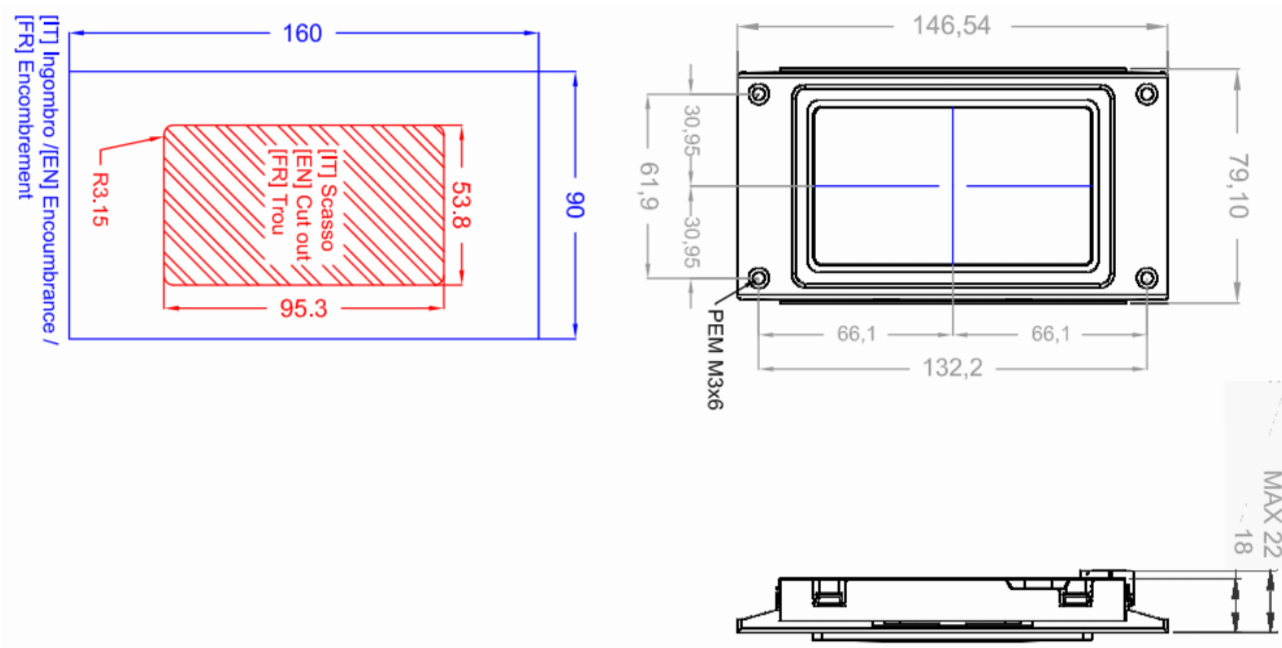
Unit 1 The iO Centre  
59-71 River Road  
Barking, Essex IG11 0DR

**0208 507 1001**

sales@pewelectrical.com  
www.pewelectrical.com



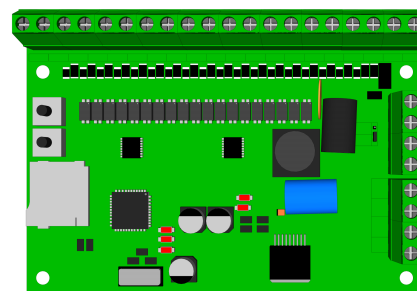
## DIMENSIONS



## INTERFACES

### SNV201ENC-VG

- RS485 serial encoder board (4-wire) to car & landings
- Binary, Gray, 1PF inputs
- Maximum 32 stops (depending on signals)
- Default or configurable service message inputs
- Configure set-up onboard via buttons
- Onboard Speech for in-car speaker (1W or 5W)
- Update speech using .wav files to MicroSD Card



### 1 PER FLOOR

- Direct input to display
- Maximum 10 stops

### PARALLEL INPUT

- Common Positive (Anode)
- Common Negative (Cathode)