



PEW Electrical Distributors

TFT Displays



IRIS 7.0"

High resolution car position indicator



MAIN FEATURES

- Easy configuration via onboard menu or PC with SIRIO Software
- Updating by microSD Card
- Customisable backgrounds, arrows, floors, logos and signals
- EN 81-70 compliant
- ECO Energy saving system mode (stand-by)
- Easy keypad for the selection of the main features (buzzer volume, communication interface, first floor, brightness, stand-by duration)
- Emergency light functionality
- Communication interface: Vega serial, RS485, CAN, parallel and magnetic sensors
- Mounting: protection case
- Mounting: horizontal and vertical
- Compact design: 110mm x 70mm x 20mm
- OPTION: **EN81-71 Antivandal Version CAT 2, 10mm Glass with Steel frame**



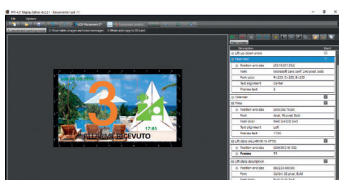
Dimensions: 7.0"
 Visible area: 154.1 x 86mm.
 Resolution: 800(RGB) x 480 -WVGA
 Pixel (mm): 0.1926x0.1179mm
 Colours: 16m
 Energy consumption: 360mA
 Power supply: 12/24 Vdc +/-10%
 Temperature range: -20/+70°C
 Encumbrance: 178x166x22mm



Example layouts / graphics



7.0" with AV Frame and Lens



SIRIO SOFTWARE

- Intuitive dedicated programming software
- Easily customise your TFT layout
- Inbuilt fonts and arrow design options
- Change display orientation
- Export to microSD Card for display update

ORDER CODES

TFT751A-2: 7.0" TFT, for 2mm plate, parallel input (standalone) and VEGA Serial
 TFT753A-2: 7.0" TFT, for 2mm plate, parallel input and SNV201ENC-VG (binary, gray, 1PF)
 (1.2mm lens also available)

add AV to above: Antivandal EN81-71 Category 2, for 2mm plate

SNV201ENC-VG: VEGA Encoder with Speech for Binary, Gray, 1PF

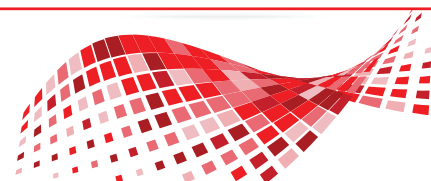
SNV201/1WSPK: 1Watt Speaker (for speech)
 SNV201/5WSPK: 5Watt Speaker (for speech)

PEW Electrical Distributors Ltd

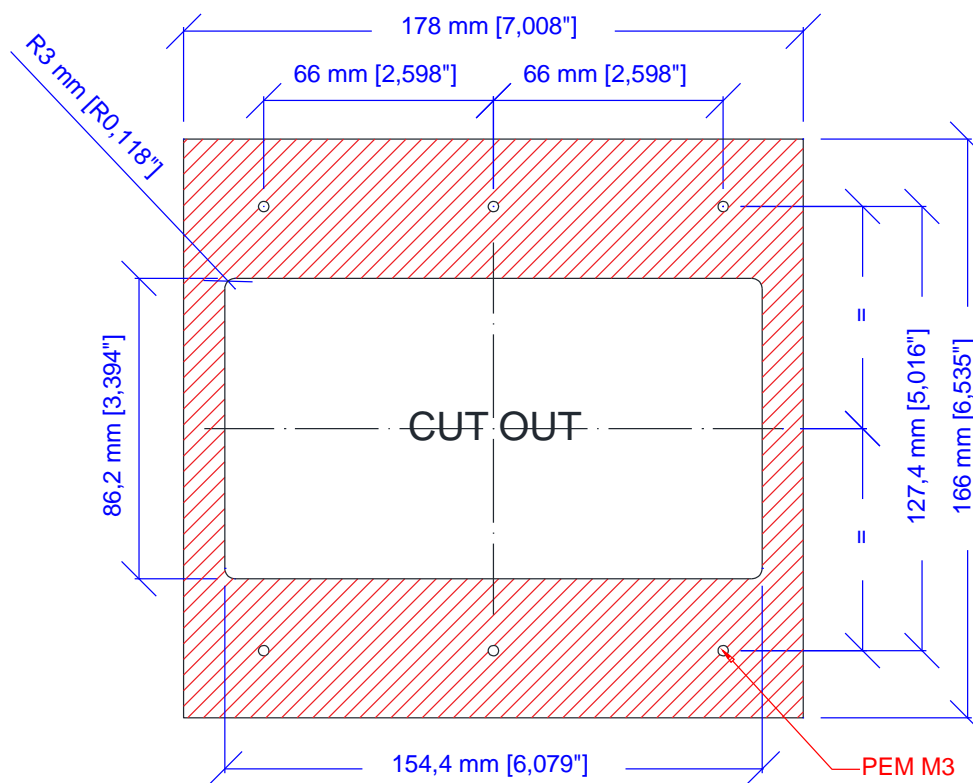
Unit 1 The iO Centre
 59-71 River Road
 Barking, Essex IG11 0DR

0208 507 1001

sales@pewelectrical.com
 www.pewelectrical.com



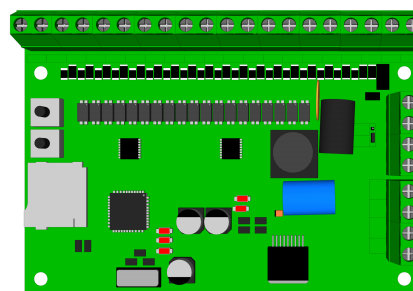
DIMENSIONS



INTERFACES

SNV201:ENC

- RS485 serial encoder board (4-wire) to car & landings
- Binary or Gray inputs
- Maximum 32 stops
- Default or configurable service message inputs
- Configure set-up onboard via buttons
- Inbuilt Speech with speaker included (1W or 5W)
- Update speech using .wav files to MicroSD Card



1 PER FLOOR

- Direct input to display
- Maximum 10 stops

PARALLEL INPUT

- Common Positive (Anode)
- Common Negative (Cathode)