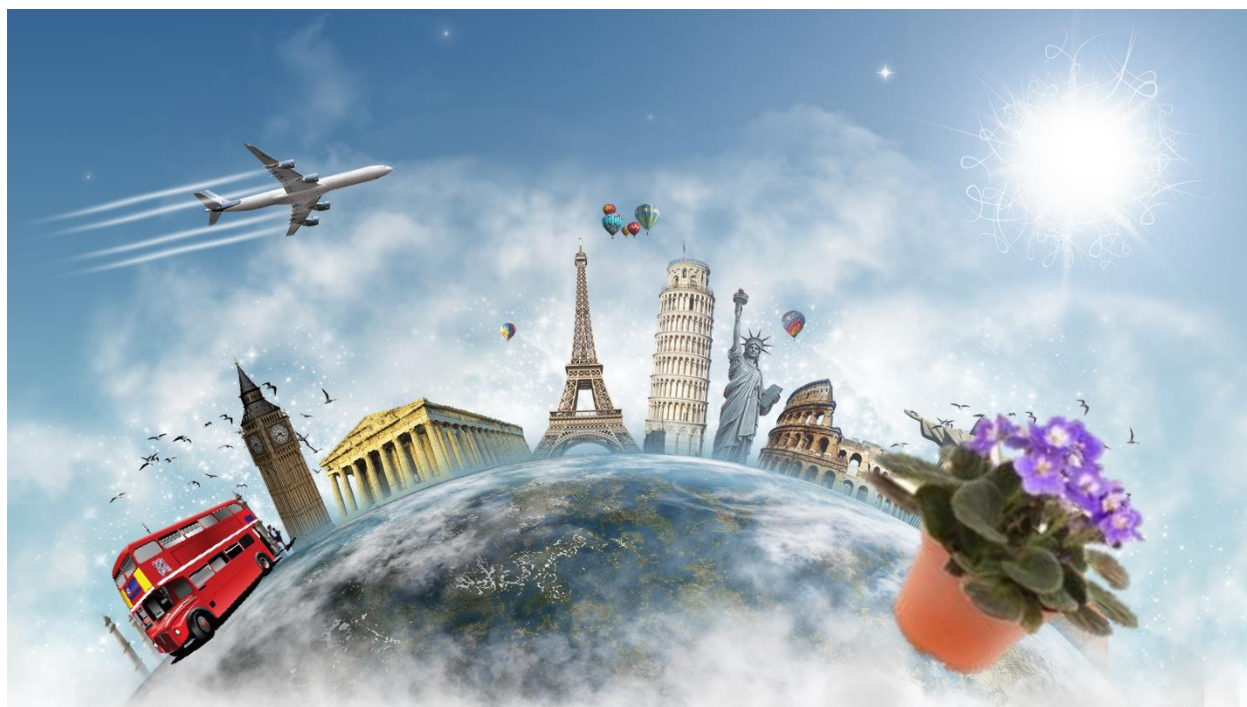


African Violets Take a European Holiday



Presented by the
Tampa African Violet Society
February 21-22, 2025

Show Hours:

Friday, Feb. 21—Noon to 5 pm

Saturday, Feb. 22—9 am to 3 pm

Plant Sale Hours:

Friday, Feb. 21—9 am to 5 pm

Saturday, Feb. 22—9 am to 3 pm



Temple Terrace United Methodist Church
5030 E. Busch Boulevard
Tampa, FL 33617



AFRICAN VIOLETS TAKE A EUROPEAN HOLIDAY!

2025 SHOW COMMITTEE

Show Chair	Mary Beth Bryant
Show Co-Chair	Sandi Soto
Schedule	Mary Lou Harden
Entries	Sandi Soto
Classification	Jim Boyer
Plant Placement	Mary Beth Bryant
Final Plant Placement	Mary Lou Harden
Focal Point	Mary Beth Bryant
Judges & Clerks	Jim Boyer
Plant Sales	Celeste Christman
Show Plant Sales	Mary Beth Bryant
Awards	Mary Lou Harden
Club Supplies	TBD
Publicity	Lynn Bandy, Mary Lou Harden
Education	Tammi Fitzgerald
Hospitality	Celeste Christman
Novice Administrator	Jim Boyer
Design Administrator	Mary Lou Harden
Set Up.....	Everyone
Clean Up	Everyone

GENERAL RULES

1. Only Active, Life and Honorary members of the Tampa African Violet Society are eligible to enter exhibits in the show.
2. The latest edition of the *AVSA Handbook for African Violet Growers, Exhibitors and Judges* will be the authority for any cases not covered by specific rules in this schedule. Qualified AVSA judges using the merit method of judging will judge the exhibits, using the AVSA scales of points applicable to each class. The judging of the show will begin at 9:00 a.m. on Friday, February 23, 2024. Only Judges, Clerks, Judges Chair, Show Chair and Classification Chair are permitted in the show area during judging. The decisions of the judges are considered final.
3. Horticultural and Design entries must be made between 2:30 p.m. and 7:30 p.m. on Thursday, February 22, 2024. Entries for show workers only will be from 1:30 p.m.
4. Each exhibitor is required to present a completed Exhibitor's List of Entries to the Classification reception table. Entry forms must be filled out in pencil in case any corrections are necessary. Each Exhibitor wishing to sell his/her show plants must submit a Show Plant Sales Form at the time of entering his/her plants, listing the names of the plants and the price of each plant the Exhibitor wishes to receive. After Entries, the Exhibitor gives the form to the Show Plant Sales Chair.
5. If someone other than the owner enters exhibits for the owner, the name of that person must be listed on the back of the Exhibitor's List of Entries form.
6. Entries must be correctly named, or they will be subject to correction by the Classification Committee.
7. Only clean, healthy plants will be accepted. Plants entered in the Horticulture Division must have been in the possession of the Exhibitor for at least three months.
8. All African violet plants entered (except trailers and species) must be single-crowned. All African violet plants must be in bloom.
9. Double-potting, flared-top pots, supports and collars will not be accepted. Self-watering pots such as Moist-Rite and Oyama, etc., may be entered in colors such as white, black, green, or any other natural tone. All other plants must be slip-potted into neutral-colored pots such as white, green, black, etc. Slip-potting means dropping the pot containing the plant into a clean pot of the same or just a fraction larger-sized pot. The exhibitor's name must not show. It is recommended that plastic or aluminum foil be placed in the bottom of the outer pot to prevent leakage onto the table covering. Exceptions: trailers, trailing species and other Gesneriads may be exhibited in the container in which they are growing. The pot must be clean.
10. Protective covers, mulches and unobtrusive stakes are permitted for Gesneriads other than African violets.
11. Gesneriads entered in Class 50 must have some special quality of foliage, coloring, texture, growth habit, etc., and not just be a Gesneriad out of bloom.

12. Exhibitors may enter only one plant of each variety in each class but may enter more than one variety in a class.
13. Only AVSA members may enter plants in Classes 1, 2 and 3 and must present a current AVSA membership card displaying the membership number. Exhibitors must provide plant Registration numbers. An Exhibitor may enter only one collection in each Collection class.
14. Only DAVS members may enter plants in Classes 4 and 5. Exhibitors must provide plant Registration numbers. An Exhibitor may enter only one collection in each Collection class.
15. Any African violet entered in a collection is eligible for all special awards.
16. Exhibits in Classes 38 and 39 must not have been shown at a prior AVSA convention show. The Exhibitor must have originated the seedlings, or the right to them must have been released in writing by the originator to the Exhibitor. Plants grown from purchased seeds are the property of the grower. It is not necessary to obtain permission from the seed's producer. Sports and mutants will be exhibited as 'Sport of _____.' If it has been named, the name will follow in parentheses.
17. "Best in Class" shall be chosen from the blue-ribbon winners in each class. "Best in Section" shall be chosen from the "Best in Class" winners from each class in the section. Only blue-ribbon winners are eligible for special awards.
18. Entries in Class 40 must be planted in an unusual, novel, or decorative container. It is not required for the entry to suggest the show theme. Only one entry per person.
19. At its discretion, the Show Committee may subdivide or consolidate classes after entries close.
20. The names of the Exhibitors shall remain covered until all special awards have been chosen.
21. The show will be open on Friday, February 23, 2024, from noon to 5:00 p.m. and on Saturday, February 24, 2024, from 9:00 a.m. to 3:00 p.m.
22. Exhibits may not be altered or removed from the show area until 3:00 p.m. on Saturday, February 24, 2024, with the exception that any sold Show Plants may be removed beginning at 2:00 p.m. on Saturday, February 24. TAVS will provide reasonable protection for the exhibits but will not be responsible for any damage or loss.
23. A "Novice" is an Exhibitor who has never won a blue ribbon in the Horticulture Division in any AVSA judged show.

DESIGN DIVISION RULES

1. An Exhibitor may have only one entry in each class. Exhibitors must complete the Exhibitor's List of Entries for their designs and follow General Rule #4 above.
2. Reservations must be made by February 15, 2024, to Mary Lou Harden, Design Administrator, at mlhard@verizon.net.

3. Notify the Design Administrator immediately if it is necessary to cancel your reservation.
4. All entries in the Design Division must have a 3" x 5" card listing the African violet varieties and other plant materials used, if known. A subtitle or written interpretation of the design may be provided on a separate 3" x 5" card but is not required.
5. All designs must be the creation of the Exhibitor and must be entered and placed by the Exhibitor.
6. A "Novice" is an Exhibitor who has never won a blue ribbon in the Design Division in any AVSA judged show.
7. Exhibitors will be permitted to work on their designs on Thursday, February 22, 2024, from 3 p.m. to 9 p.m. after completing the entry process and on Friday, February **23, from 7:00 a.m. to 8:45 a.m. All design Exhibitors and their materials must be out of the show area by 8:45 a.m.**

HORTICULTURE DIVISION

Section 1 – Collections

Class 1 – AVSA Collection of three different registered standard varieties of the same type (three single-crown or three trailers) regardless of type.

Class 2 – AVSA Collection of three different registered miniature or semi-miniature varieties of the same type (three single-crown miniatures, three miniature trailers, three single-crown semi-miniatures or three semi-miniature trailers).

Class 3 – AVSA Collection of three different species, regardless of type.

Class 4 – DAVS Collection of three different Dixie registered standard varieties of the same type (three single-crown or three trailers).

Class 5 – DAVS Collection of three different Dixie registered miniature or semi-miniature varieties of the same type (three single-crown miniatures, three miniature trailers, three single-crown semi-miniatures or three semi-miniature trailers).

Section II – Standard specimen plants, green foliage, any type blossom

Class 6 – White, cream, blush, green, yellow, and two-tones of these colors

Class 7 – Pink, coral, rose, and two-tones of these colors

Class 8 – Red, wine, fuchsia, plum, maroon, burgundy, mauve and two-tones of these colors

Class 9 – Blue, purple, lavender, orchid, and two-tones of these colors

Class 10 – Fantasy and Chimera

Class 11 – Edged

Class 12 – Multi-colored

Section III – Standard specimen plants, variegated foliage, any type blossom

Class 13 - White, cream, blush, green, yellow, and two-tones of these colors

Class 14 – Pink, coral, rose, and two-tones of these colors

Class 15 – Red, wine, fuchsia, plum, maroon, burgundy, mauve and two-tones of these colors

Class 16 – Blue, purple, lavender, orchid, and two-tones of these colors

Class 17 – Fantasy and Chimera

Class 18 – Edged

Class 19 – Multi-colored

Section IV – Miniature specimen plants, any type foliage, any type blossom

Class 20 – White, cream, blush, yellow, green and two-tones of these colors

Class 21 – Pink, coral, rose and two-tones of these colors

Class 22 – Red, wine, fuchsia, plum, maroon, burgundy, mauve and two-tones of these colors

Class 23 – Blue, purple, lavender, orchid and two-tones of these colors.

Class 24 – Fantasy and Chimera

Class 25 – Edged

Class 26 – Multi-colored

Section V – Semi-miniature specimen plants, any type foliage, any type blossom

Class 27 – White, cream, blush, yellow, green and two-tones of these colors

Class 28 – Pink, coral, rose and two-tones of these colors.

Class 29 – Red, wine, fuchsia, plum, maroon, burgundy, mauve and two-tones of these colors

Class 30 – Blue, purple, lavender, orchid and two-tones of these colors

Class 31 – Fantasy and Chimera

Class 32 – Edged

Class 33 – Multi-colored

Section VI – Trailers, any type foliage, any type blossom

Class 34 – Standard trailers

Class 35 – Semi-miniature trailers

Class 36 – Miniature trailers

Section VII – Special Classes

Class 37 – Saintpaulia species

Class 38 – New cultivar seedling origination (see Rule #16)

Class 39 – New cultivar sport and mutant origination (see Rule #16)

Class 40 – African violet plant in an unusual, novel or decorative container (see Rule #18)

Class 41 – Vintage violets (25 years or older, before 1999)

Class 42 – Club Project Plant

A. Novice

B. Other Than Novice

Class 43 – Novice (see Rule #23)

Section VIII – Gesneriads other than African violets (see Rules #10 and #11)

Class 44 – Miniature Sinningia (may be displayed in a regular pot or growing in a clear container, cover permitted; no single plant more than 5" in diameter)

Class 45 – Standard Sinningia, single or double-crowned (may be displayed in a regular pot or growing in a clear container, cover permitted)

Class 46 – Tuberous-rooted in bloom

Class 47 – Scaly-rhizomed in bloom

Class 48 – Fibrous-rooted in bloom

Class 49 – Episcias in bloom

Class 50 – Gesneriads grown for ornamental qualities other than bloom.

SPECIAL EXHIBITS DIVISION

Section IX – Special Exhibits

Class 51 – Education and AVSA information

DESIGN DIVISION

Although Europe is the second smallest of the world's continents, its countries have rich histories, art and culture. Some are renowned for their museums, some for their cuisine, fashion and wine, others for their music and dance, and still others for their historical sites. Some are also famous for their canals, tulip fields, windmills, forests and coastal islands.

Section X – Interpretive Flower Arrangements

Designs using cut African violet blossoms. Dried, treated, painted, colored and fresh-cut plant materials as well as man-made materials are permitted. Artificial plant material, live or dead creatures and national flags are not permitted. Accessories,

bases and backdrops and/or draping are permitted unless restricted by class description. Only one exhibit per exhibitor per class.

Class 52. “Vienna, Austria,” the home of Mozart and the world-famous Vienna State Opera House. As a child, Mozart performed concerts in Vienna’s beautiful Schonbrunn Palace and Imperial Palace. A flower arrangement in a white cardboard niche 28”H x 23”W x 12”D deep (15” may be used for depth of niche). Limit 3.

Class 53. “Prague, ‘City of a Thousand Spires.’” Few cities embody the past as authentically as Prague. Prague’s architecture is its most prominent feature, with its medieval gates, Baroque belfries and Gothic church spires, but the city is also rich in Romanesque, baroque and art nouveau buildings that stir the imagination. A flower arrangement in a white foam board niche 22”H x 18”W x 12”D (15” may be used for depth of niche). Limit 3

Class 54. “Venice, Italy.” Cruise along the Grand Canal on a romantic gondola ride. An underwater arrangement, completely submerged, in a clear container not to exceed 16 inches. To be staged on mirrored risers. Limit 3

Section XI – Interpretive Plant Arrangements

Designs using one or more blooming African violet plants removed from the pot, with their rootball encased in plastic or other material. Dried, treated, painted, colored and fresh-cut plant materials, as well as man-made materials are permitted. Artificial plant material, live or dead creatures and national flags are not permitted. Accessories, backdrops, and/or draping are permitted unless restricted by class description. Only one exhibit per exhibitor per class.

Class 55. “Athens, Greece.” Greece has ancient monuments at seemingly every turn, but it’s in Athens where the greatest and most iconic still stand. High on a rocky outcrop overlooking the city, the Acropolis epitomizes the glory of ancient Greece with its graceful Parthenon and 17,000-seat Theatre of Dionysos. Other impressive ruins enriching this vibrant city include the Temple of Olympian Zeus and two agoras (marketplaces) one Greek, one Roman, mingling with first-rate museums. A plant arrangement to be staged in a white cardboard niche 22”H x 18”W x 12”D (15” may be used for depth of niche). Limit 3

Class 56. “The Castles of Germany.” Germany has over 2000 castles and the middle Rhine is known for its German Castle fortresses. The most outstanding castles are the Marksburg, the Burg Pfalzgrafenstein and the Rheinfels. A plant arrangement to be staged in a white cardboard niche 28”H x 23”W x 12”D (15” may be used for depth of niche). Limit 3

Class 57. “Paris, France.” Home to the iconic Eiffel Tower, the world’s largest art museum at the Louvre, hundreds of other incredible museums, Notre Dame Cathedral, Montmartre, as well as the banks of the Seine, Paris is known as the “City

of Light.” A plant arrangement to be staged in a white cardboard niche 14”H x 11”W x 10”D (12” may be used for depth of niche). *Limit 3*

Section XII – Container Gardens

Miniature gardens with one or more blooming African violet plants and other growing plants. All plants must be planted in the container. No cut plant material, artificial plant material, cacti, succulents, live or dead creatures or national flags are permitted with the exception of weathered wood or natural materials that are used for effect. Accessories and landscaping elements are permitted. No decorative bases are allowed. Only one exhibit per class per exhibitor. Not to exceed 30” in any direction. No limit on entries, but **reservations are required for all container garden classes.**

Class 58 – A Natural Garden

Class 59 – Terrarium

Class 60 – Dish Garden