



DAIRY AUTOMATION SOLUTIONS

PARLOR 400 SERIES

Completely **Perfect Milking**

Espresso Detacher

Presto Detacher



The highest level of parlor automation

Why is the Smart Sensor so important?

The Espresso and Presto are AIC Waikato's Parlor detachers with monitors that use conductivity for real time milk sensing.

Our "Real Time" milk sensing instantly calculates milk flow rates and produces milk flow curves and flow rates on a graphic display or displayed as peak and average data — creating a precision tool for determining "Perfect Milking".

AIC Waikato's real time milk flow sensing provides the best solution for flexible and consistent end-of-milking detach. Unlike using resistance for milk sensing that is exceedingly difficult to keep accurately adjusted and consistent in the parlor, or fill and dump milk metering devices that react slowly in between dumps; AIC Waikato's real time milk sensing instantly calculates end-of-milking flow, reducing strip times and milking stress.

In addition to AIC Waikato's real time sensing providing the path to achieving "Perfect Milking", our sensor incorporates exclusive "CT-Logic" (Critical Temperature Logic) for animal health and herd temperature management.

Milk conductivity is also measured as a means of recognizing changes in milk quality due to natural reactions in the animal's immune system.

More outstanding features of AIC Waikato's Exclusive Milk Sensing:

- No Moving Parts
- No Regular Maintenance
- Small Easy to Install
- Minimal Vacuum Drop
- Easy to Clean
- Wash Temperature Monitoring



Tracker RFID™ for Individual Cow Identification and Monitoring

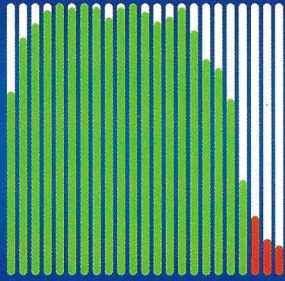
AIC Waikato's RFID system identifies cows in the parlor using an RFID tag and transfers the individual cow's milk weight, conductivity and milk temperature data to our software, storing every cow's milking record and making it available for dairy management software to import. The Tracker RFID™ system compiles cow, herd, operator and parlor performance data optimizing your return on investment.

- Uses the latest in RFID ear tag technology
- Creates list of high temperature cows
- Integrates with AIC Waikato's **Tracker Sort™** systems
- Compatible with all Dairy Management Software Packages
- Easy to Install
- No Regular Maintenance
- Remotely accessible



www.aicwaikato.com

Managing productivity from Real-Time information



AIC Waikato brings detailed milk flow data into your management system and in front of your operators — increasing productivity and herd health

The Perfect Milking flow curve

- Rapid Increase in Milk Flow, Reaching Near Peak Quickly
- Sustained Near Peak Milk Flow Rate for 3-4 minutes
- Sharp Drop in Milk Flow prior to End of Milking
- "Minimal" Low Milk Flow period, Noted in "Red"
- Consistent "Very High", Peak and Average Milk Flow Rates
- Short Milking Unit-On Time (Lower Milking Stress)

The fusion of manpower, livestock and technology to achieve optimum productivity and health.



AIC Waikato's Perfect Milking philosophy

We believe the most profitable dairies - like all businesses - are those which perform fundamental tasks to the highest standards. This belief is enabled by the "Perfect Milking" philosophy which is the cornerstone to streamlining a farm dairy business.

AIC Waikato tools and technologies guide farmers to achieve "Perfect Milking" — consistently delivering higher milk productivity in lower stress environments; ensuring healthier cows, managed staff and optimum utilization of milking equipment.

Our systems are clear, easy to use and uncluttered providing everything you need and nothing you don't. Our technology has gained an enviable reputation for innovation, reliability and durability.

AIC

WAIKATO

Espresso Detacher

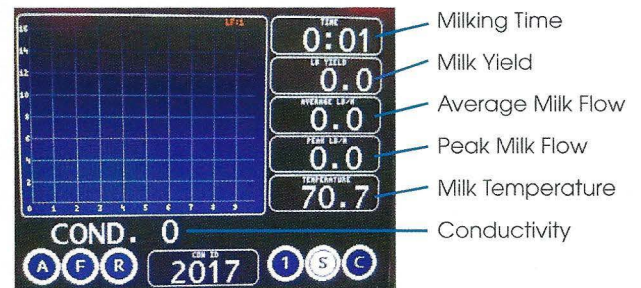
AIC Waikato's newest innovation in detachers



The highest level of parlor automation with high speed interactive microprocessor to effectively manage your

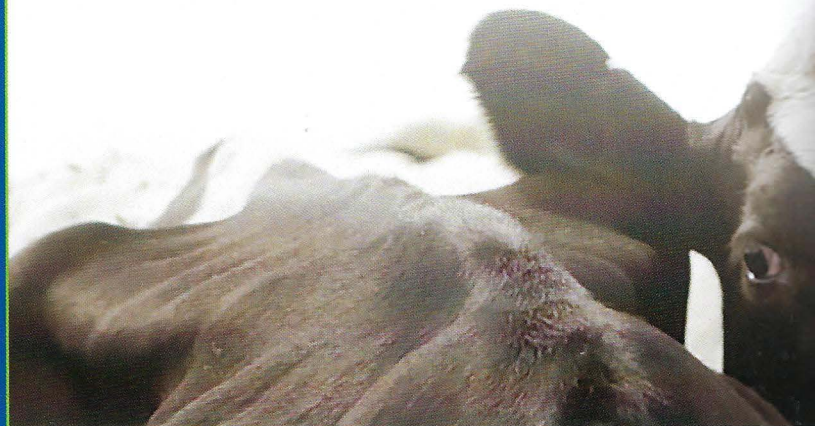
- Milking • Pulsation
- Herd Health • Washing

"Real Time" parlor automation with high speed interactive microprocessors to effectively monitor your milk flow rates and curves.



Circle Call Outs:

- **A** or **M** = Automatic or Manual Mode
- **F** = Front Pulsation Output
- **R** = Rear Pulsation Output
- **S** = Milk Line Shut-off output
- **C** = Retractor Cylinder or Motor output



FEATURES

	Expresso	Presto
Graphic Display	✓	✓
Milk Yield	✓	✓
Milk Temperature	✓	✓
CT-Logic	✓	✓
Wireless Communication	✓	
Operator Management	✓	
High-Speed Microprocessor	✓	
Keypad Data Entry	✓	
Colored High Definition Screen	✓	
Data analysis	✓	
Expandable Memory	✓	
Conductivity Monitor	✓	✓
Flexible end-of-milk detach	✓	✓
Rugged stainless steel construction	✓	✓
Prep timer	✓	✓

BENEFITS

	Expresso	Presto
Simple to Install and Clean	✓	✓
Easily Adapts to All Brands	✓	✓
Optimize Milk Flow	✓	✓
ID Sick Cows	✓	✓
Improve Herd Health	✓	✓
Consistent Detach	✓	✓
Consistent Attach	✓	✓
Fast On-Farm Set-Up	✓	✓
Low Maintenance Cost	✓	✓
Reduce milker unit "on-time"	✓	✓
Ease of operation	✓	✓
Improve udder health	✓	✓

Presto Detacher

Affordable, durable, dependable and easy-to-operate solution for any configuration

Clear and concise monitoring for "Real Time" information.



Manage Your Cow-Side Information

