

**TESTING BRIEF**  
**National Assessment of Educational Progress (NAEP) - Reading**  
**January 28 – March 8, 2019**

---

The Nation’s Report Card, the National Assessment of Educational Progress (NAEP), is a nationally representative and continuing assessment of what America’s students know and can do in various subject areas. Since 1969, assessments have been conducted periodically in reading, mathematics, science, writing, history, geography, and other fields. By making objective information on student performance available to policymakers at the national, state, and local levels, NAEP is an integral part of our nation’s evaluation of the condition and progress of education. Only information related to academic achievement is collected under this program. NAEP guarantees the privacy of individual students and their families. This report provides selected NAEP results for Georgia’s public school students in reading at grades 4 and 8. Student performance is reported as an average score based on the NAEP reading scale, which ranges from 0 to 500. Beginning in 1992, reading has been assessed in thirteen different years at the state level (at grade 4 in 1992 and 1994, and at both grades 4 and 8 in 1998, 2002, 2003, 2005, 2007, 2009, 2011, 2013, 2015, 2017 and 2019). This report presents results from 2002 to 2019. This is the second year for digitally based assessment (DBA) results for NAEP.

**KEY FINDINGS IN READING**

**Grade 4**

- The average reading scale score for students in Georgia was 218. This was not significantly different from the score in 2017 (220).
- Georgia’s average score in 2019 (218) was not significantly different than that of the nation’s public schools (219).
- The average reading scale score for White students in Georgia increased one (1) point from 2017 (231) to 2019 (232). The average scale score for Black students decreased (1) point from 2017 (206) to 2019 (205). The average scale score for Hispanic students decreased five (5) points from 2017 (214) to 2019 (209). Scale score changes for these race/ethnic groups were not statistically significant.
- The average reading scale score for students who were eligible for the National School Lunch Program (NSLP) was 209 in 2017 and 207 in 2019, a two (2) point decrease.
- In 2019, the percentage of students in Georgia who performed at or above *Basic* was 63 percent. This was not significantly different from 2017 (66 percent).
- The percentage of students in Georgia who performed at or above *Basic* (63 percent) was not significantly different than the nation’s public schools (65 percent).
- In 2019, the percentage of students in Georgia who performed at or above *Proficient* was 32 percent. This was three points less than the percentage for 2017 (35 percent).
- The percentage of students in Georgia who performed at or above *Proficient* (32 percent) was not statistically different than the percentage for the nation’s public schools (34 percent).
- In 2019, the percentage of students in Georgia who performed at *Advanced* was 9 percent. This was the same as the percentage in 2017 (9 percent).
- The percentage of students in Georgia who performed at *Advanced* was 9 percent which was the same as the percentage for the nation’s public schools (9 percent).
- There are 19 states/jurisdictions whose average scale score is statistically higher than Georgia, their scores range from 222 to 235.
- There are 26 states/jurisdictions whose average scale score is not significantly different than Georgia, their scores range from 215 to 221.
- There are 6 states/jurisdictions whose average scale score is lower than Georgia, their scores range from 204 to 214.

## KEY FINDINGS IN READING

### Grade 8

- The average reading score for students in Georgia was 262. This was significantly different from the score in 2017 (266).
- Georgia's average score (262) was not significantly different than that of the nation's public schools (262).
- The average reading scale score for White students in Georgia decreased four (4) points from 2017 (276) to 2019 (272). The average scale score for Black students decreased six (6) points from 2017 (255) to 2019 (249). The average scale score for Hispanic students decreased four (4) points from 2017 (260) to 2019 (256). Scale score change for these race/ethnic groups were not statistically significant.
- The average reading scale score for students who were eligible for the National School Lunch Program (NSLP) was 252, this was a four (4) point decrease since 2017 (256).
- In 2017, the percentage of students in Georgia who performed at or above *Basic* was 72 percent. This was lower than 2017 (76 percent).
- The percentage of students in Georgia who performed at or above *Basic* (72 percent) was the same as the percentage for the nation's public schools (72 percent).
- In 2017, the percentage of students in Georgia who performed at or above *Proficient* was 32 percent. This was not significantly different than 2015 (35 percent).
- The percentage of students in Georgia who performed at or above *Proficient* (32 percent) was not significantly different than the percentage for the nation's public schools (32 percent).
- In 2019, the percentage of students in Georgia who performed at *Advanced* was 4 percent. This was the same percentage as 2017 (4 percent).
- The percentage of students in Georgia who performed at *Advanced* (4 percent) was the same as the percentage for the nation's public schools (4 percent).
- There are 12 states/jurisdictions whose average scale score is statistically higher than Georgia, their scores range from 266 to 280.
- There are 26 states/jurisdictions whose average scale score is not significantly different than Georgia, their scores range from 262 to 266.
- There are 13 states/jurisdictions whose average scale score is lower than Georgia, their scores range from 250 to 260.

Table 1: Average Scale Scores – NAEP Grade 4 Reading 2002-2019

Average Scale Scores											
	2002	2003	2005	2007	2009	2011	2013	2015	2017	2019	Change 2002-2019
<b>All Students</b>	215*	214*	214*	219	218	221	222	222	220	218	+3
<b>White</b>	226*	226*	226*	230	229	231	233	232	231	232	+6
<b>Black</b>	200*	199*	199*	205	204	208	209	212*	206	205	+5
<b>Hispanic</b>	200	201	203	212	208	214	213	211	214	209	+9
<b>Asian</b>	227*	233	243	232	238	242	245	240	248	246	+19
<b>Male</b>	211	210*	210	216	214	216	219*	219	216	214	+3
<b>Female</b>	219	218	219	222	221	226	225	225	223	222	+3
<b>FRL (NSL)</b>	202*	200*	201*	207	207	209	211	214*	209	207	+5
<b>Students with Disabilities</b>	180	181	191	202*	187	189	191	197*	177	182	+2
<b>English Learner</b>	180*	182*	182*	185	186	191	189	188	190	196	+16

\*Value is significantly different from the 2019 value.

Figure 1: Average Scale Scores – NAEP Grade 4 Reading 2002-2019

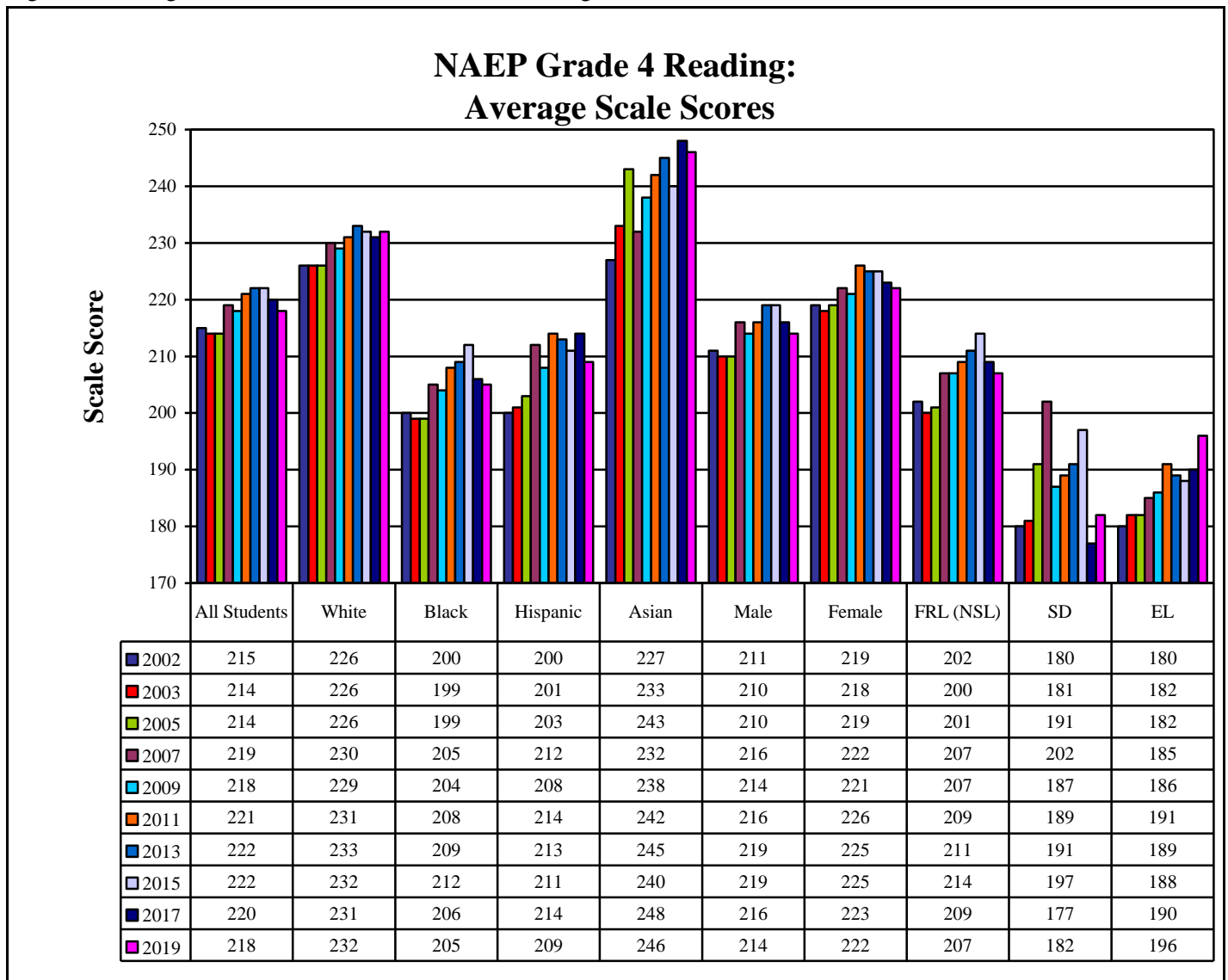


Table 2: Achievement Level – Percent At or Above Basic on NAEP Grade 4 Reading 2002-2019

Percent At or Above Basic											
	2002	2003	2005	2007	2009	2011	2013	2015	2017	2019	Change 2002-2019
<b>All Students</b>	59*	59*	58*	66	63	66	67	68*	66	63	+4
<b>White</b>	72	72	73	79	76	78	79	80	78	77	+5
<b>Black</b>	41*	42	40*	48	47	51	52	57	53	50	+9
<b>Hispanic</b>	45*	48	46	58	52	60	58	55	60	56	+11
<b>Asian</b>	68*	77	84	78	83	87	86	84	86	87	+19
<b>Male</b>	56	55	53*	62	59	61	63	64	62	60	+4
<b>Female</b>	62	63	63*	69	66	72*	71	72*	70	67	+5
<b>FRL (NSL)</b>	44*	43*	43*	51	50	53	56	60	55	53	+9
<b>Students with Disabilities</b>	24	28	37	48*	30	34	37	39	27	29	+5
<b>English Learner</b>	23	28	20*	24*	22*	31	29	23*	32	41	+18

\*Value is significantly different from the 2019 value.

Figure 3: Percent At or Above Basic – NAEP Grade 4 Reading 2002-2019

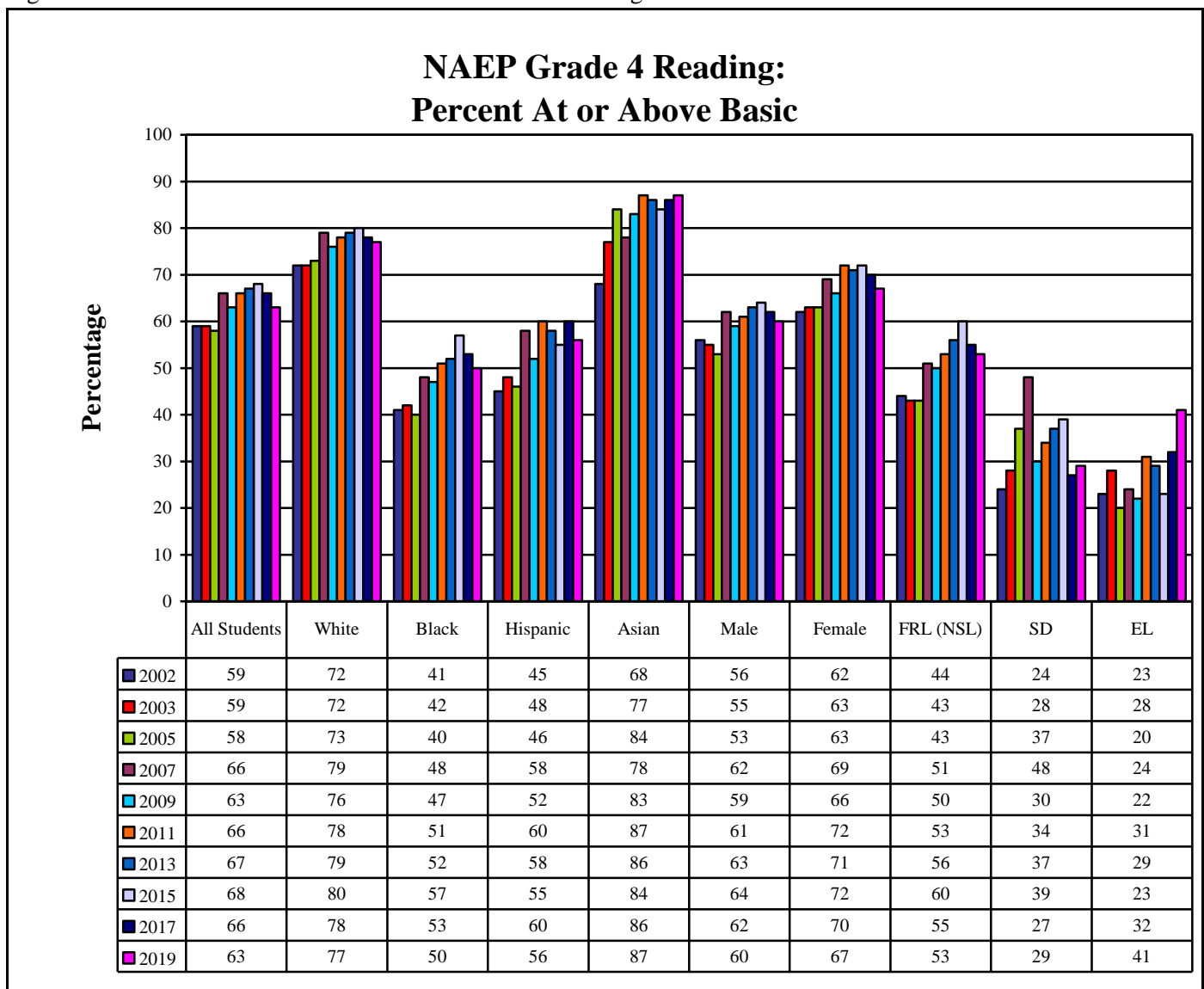


Table 3: Achievement Level – Percent At or Above Proficient on NAEP Grade 4 Reading 2002-2019

Percent At or Above Proficient											
	2002	2003	2005	2007	2009	2011	2013	2015	2017	2019	Change 2002-2019
<b>All Students</b>	28*	27*	26*	28	29*	32	34	34	35	32	+4
<b>White</b>	39*	38*	37*	40	40*	43	45	45	46	48	+9
<b>Black</b>	13*	12	12*	14	15	19	20	22	22	17	+4
<b>Hispanic</b>	15	17	14	21	20	25	24	22	26	23	+8
<b>Asian</b>	42	43	57	49	53	57	61	56	67	62	+20
<b>Male</b>	25	24*	22*	25	26	28	32	30	32	30	+5
<b>Female</b>	31	30	30	31	33	37	36	37	37	35	+4
<b>FRL (NSL)</b>	16	13*	13*	15*	18	20	21	23	22	20	+4
<b>Students with Disabilities</b>	9	10	15	17	14	11	16	17	11	13	+4
<b>English Learner</b>	4*	9	4	4*	6	5	8	5	10	11	+6

\*Value is significantly different from the 2019 value.

Figure 3: Percent At or Above Proficient – NAEP Grade 4 Reading 2002-2019

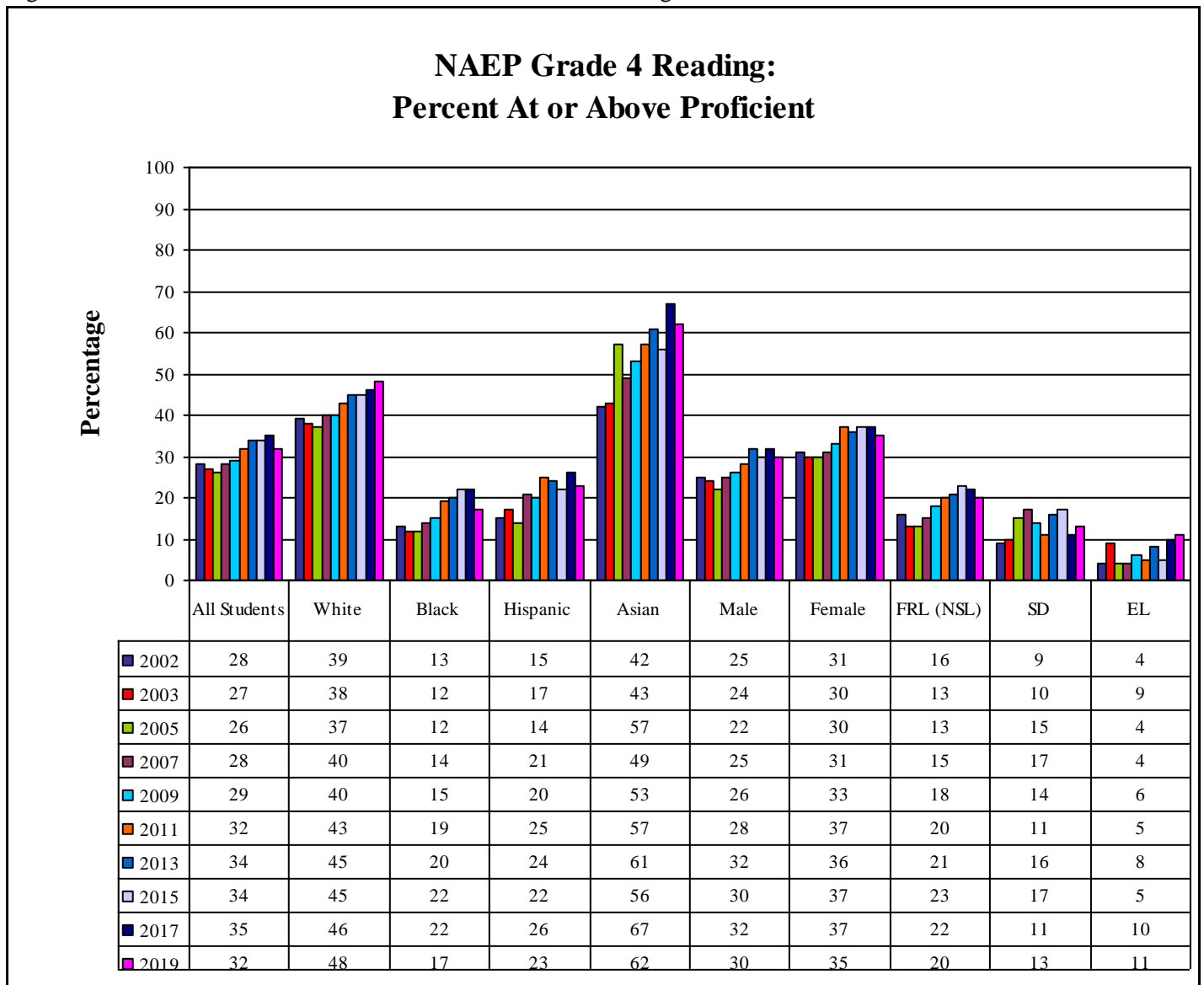


Table 4: Average Scale Scores – NAEP Grade 8 Reading 2002-2019

Average Scale Scores											
	2002	2003	2005	2007	2009	2011	2013	2015	2017	2019	Change 2002-2019
<b>All Students</b>	258*	258*	257*	259*	260	262*	265	262	266	262	+4
<b>White</b>	268*	268	268*	271*	268*	272	274	273	276	272	+4
<b>Black</b>	246	244*	241*	246	249	251	252	248*	255	249	+3
<b>Hispanic</b>	242*	245*	247	250	254	258	260	257	260	256	+14
<b>Asian</b>	265*	265*	275	N/A	286	277	286	280	291	285	+20
<b>Male</b>	253	253	251*	253	255	258	260	255	261*	256	+3
<b>Female</b>	263*	263*	263*	264*	266	267	270	269	272	269	+6
<b>FRL (NSL)</b>	245*	243*	243*	247*	249	253	255	253	256	252	+7
<b>Students with Disabilities</b>	216*	212*	226	231	224*	234	230	227	233	233	+17
<b>English Learner</b>	N/A	N/A	N/A	N/A	N/A	N/A	220	233	222	219	-3**

\*Value is significantly different from the 2019 value.

NA – Reporting standards for sample size not met.

\*\*Due to N/A, change reported for years other than 2002-2019

Figure 4: Average Scale Scores – NAEP Grade 8 Reading 2002-2019

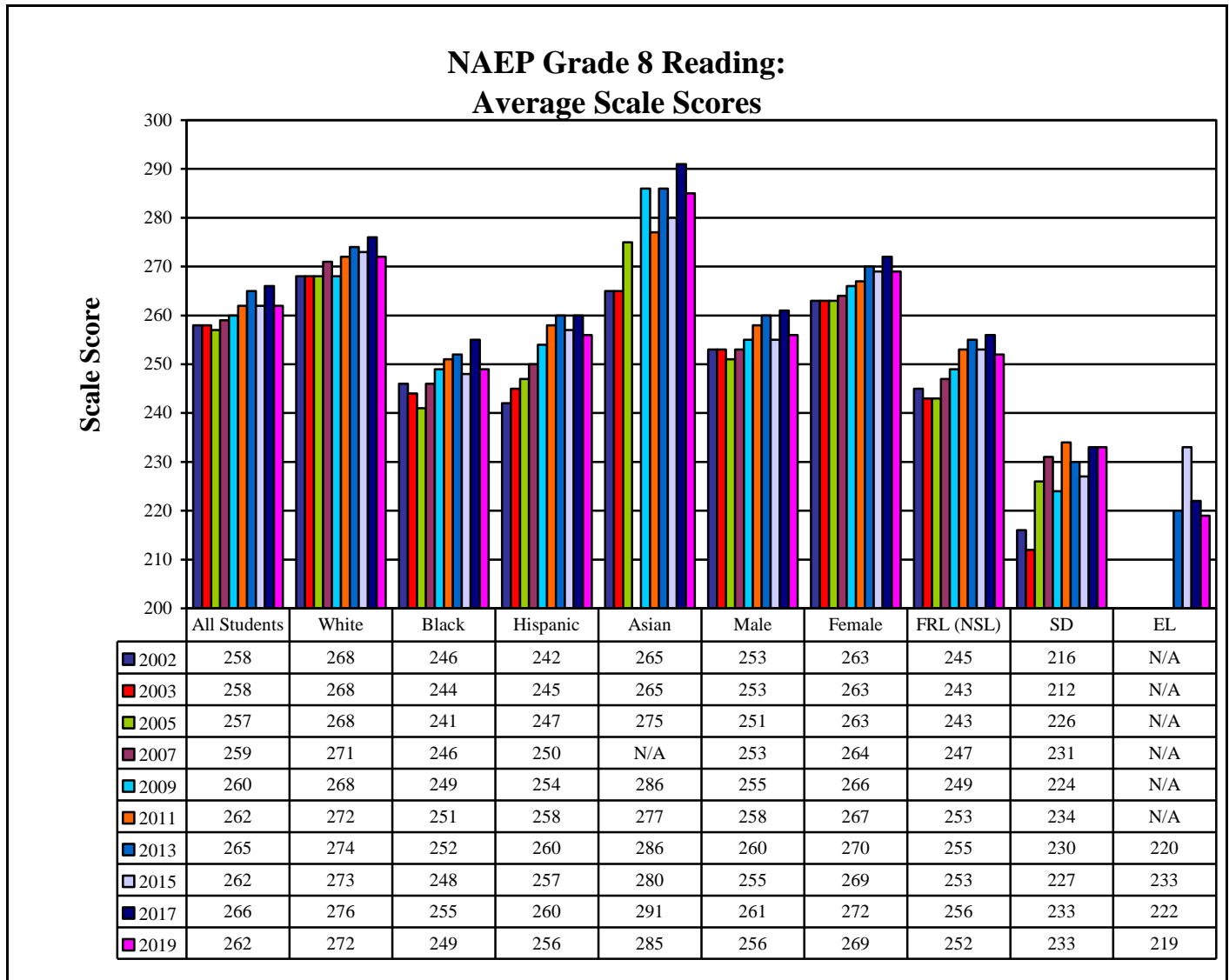


Table 5: Achievement Level – Percent At or Above Basic on NAEP Grade 8 Reading 2002-2019

Percent At or Above Basic											
	2002	2003	2005	2007	2009	2011	2013	2015	2017	2019	Change 2002-2019
<b>All Students</b>	70	69	67*	70	72	74	75	73	76	72	+2
<b>White</b>	80	81	79	84	81	85	85	85	85	82	+2
<b>Black</b>	56	54	49*	56	60	61	64	59	66	59	+3
<b>Hispanic</b>	51	55	59	62	67	70	74	70	71	67	+16
<b>Asian</b>	77	70	79	N/A	90	88	85	89	91	88	+12
<b>Male</b>	64	63	61	65	66	69	71	67	70	66	+2
<b>Female</b>	75	76	73*	75	78	79	80	79	82	78	+3
<b>FRL (NSL)</b>	56	54*	52*	57	60	65	67	65	66	62	+6
<b>Students with Disabilities</b>	26	22*	32	41	32	39	38	36	39	39	+13
<b>English Learner</b>	N/A	N/A	N/A	N/A	N/A	N/A	21	42	24	24	+ 3**

\*Value is significantly different from the 2019 value.

N/A – Reporting standards for sample size not met.

\*\* Due to N/A, change reported for years other than 2002-2019.



Figure 5: Percent At or Above Basic – NAEP Grade 8 Reading 2002-2019

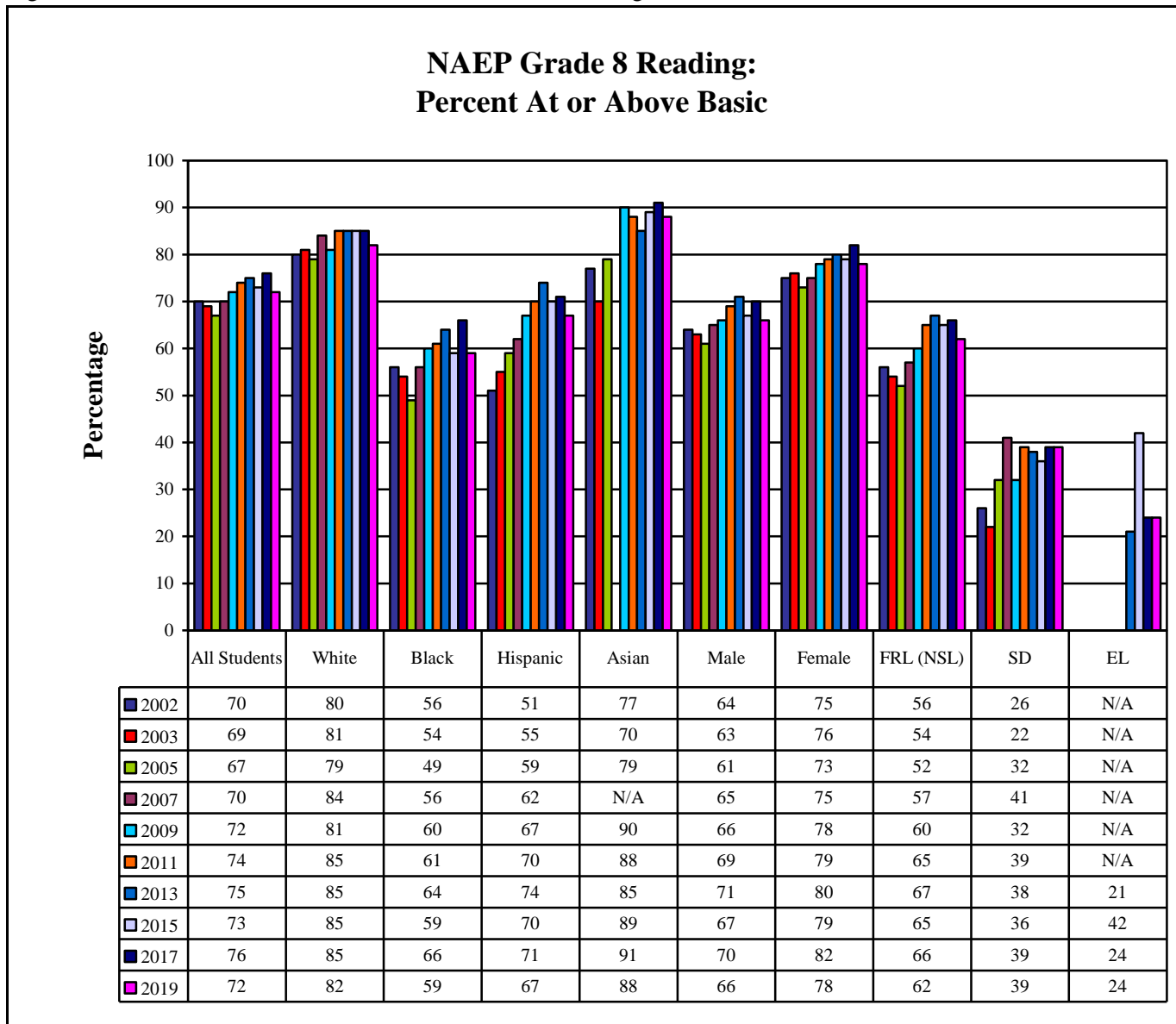


Table 6: Achievement Level – Percent At or Above Proficient on NAEP Grade 8 Reading 2002-2019

Percent At or Above Proficient											
	2002	2003	2005	2007	2009	2011	2013	2015	2017	2019	Change 2002-2019
<b>All Students</b>	26*	26*	25*	26*	27*	28*	32	30	35	32	+6
<b>White</b>	35*	36	35*	38	35*	38	42	43	46	43	+8
<b>Black</b>	14	12	10*	13	15	14	17	15	21	18	+4
<b>Hispanic</b>	14	16	14*	17	20	21	26	21	29	25	+11
<b>Asian</b>	27*	39	47	N/A	61	48	60	51	65	58	+32
<b>Male</b>	22	22	20*	20*	22*	23	26	23	29	26	+4
<b>Female</b>	30*	30*	30*	31*	32*	32	37	37	42	38	+8
<b>FRL (NSL)</b>	14*	12*	12*	14*	14*	16*	20	20	24	21	+7
<b>Students with Disabilities</b>	6	2*	5	6	4*	8	6	7	9	10	+4
<b>English Learner</b>	N/A	N/A	N/A	N/A	N/A	N/A	4	6	4	3	-1**

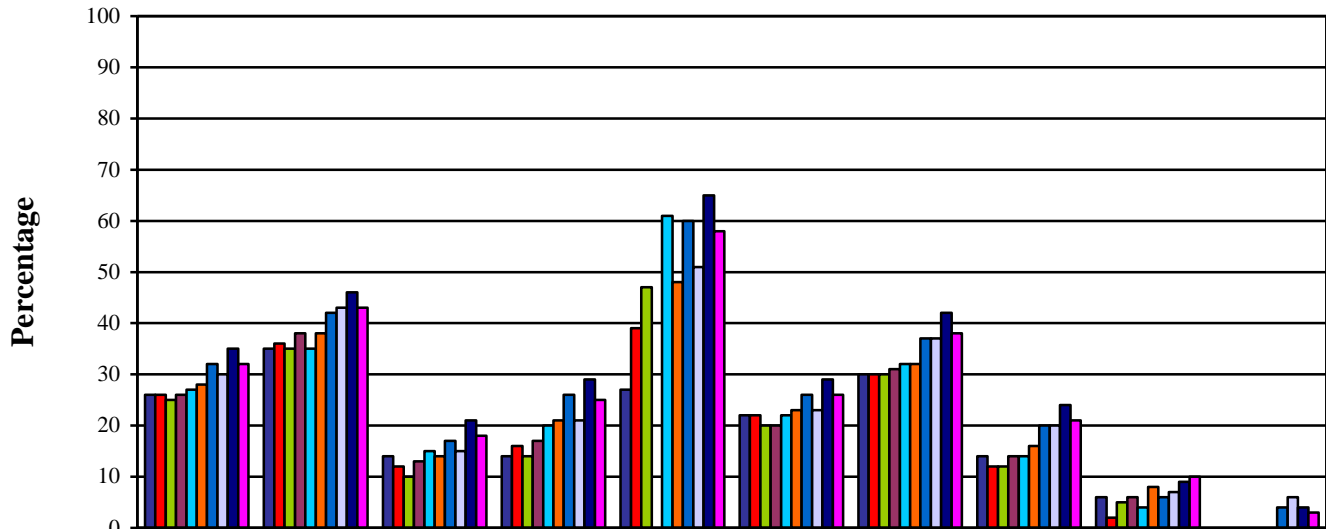
\*Value is significantly different from the 2019 value.

N/A – Reporting standards for sample size not met.

\*\* Due to N/A, change reported for years other than 2002-2019.

Figure 6: Percent At or Above Proficient – NAEP Grade 8 Reading 2002-2019

### NAEP Grade 8 Reading: Percent At or Above Proficient



	All Students	White	Black	Hispanic	Asian	Male	Female	FRL (NSL)	SD	EL
2002	26	35	14	14	27	22	30	14	6	N/A
2003	26	36	12	16	39	22	30	12	2	N/A
2005	25	35	10	14	47	20	30	12	5	N/A
2007	26	38	13	17	N/A	20	31	14	6	N/A
2009	27	35	15	20	61	22	32	14	4	N/A
2011	28	38	14	21	48	23	32	16	8	N/A
2013	32	42	17	26	60	26	37	20	6	4
2015	30	43	15	21	51	23	37	20	7	6
2017	35	46	21	29	65	29	42	24	9	4
2019	32	43	18	25	58	26	38	21	10	3