



ARTHOUSE

Bennett Build

Selected Projects



About Us

Bennett Build, based in Portland, OR is a global network of construction professionals and researchers dedicated to helping clients understand and solve their problems in concrete and flooring construction. We are committed to building for safety, sustainability and strength.

S E R A



EASTERN OREGON
UNIVERSITY



LEVER

LRS
ARCHITECTS
PORTLAND | SHANGHAI

project[^]

PNCA
Pacific Northwest College of Art

WALSH
CONSTRUCTION CO.

ArtHouse

A combination of round and crushed river rock to complete a polished concrete floor for The Pacific Northwest College of Art's student housing. *Lever Architecture, LRS Architects, Project^, Walsh.*



415 Natoma

House & Robertson Architects



Internal curing



Quantifiable benchmarks and QC



Contractor training as requirement of mockup and quality assurance



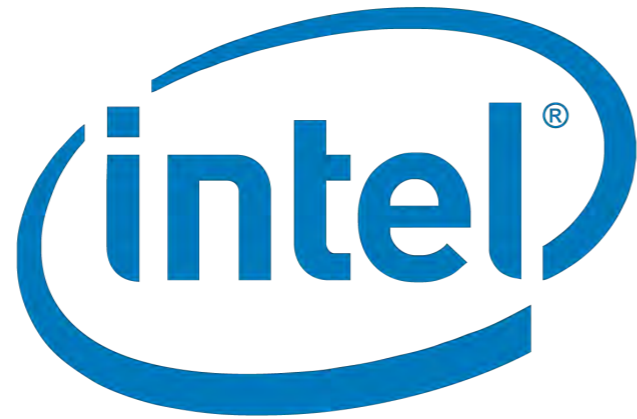
Smart sequencing





ZGF

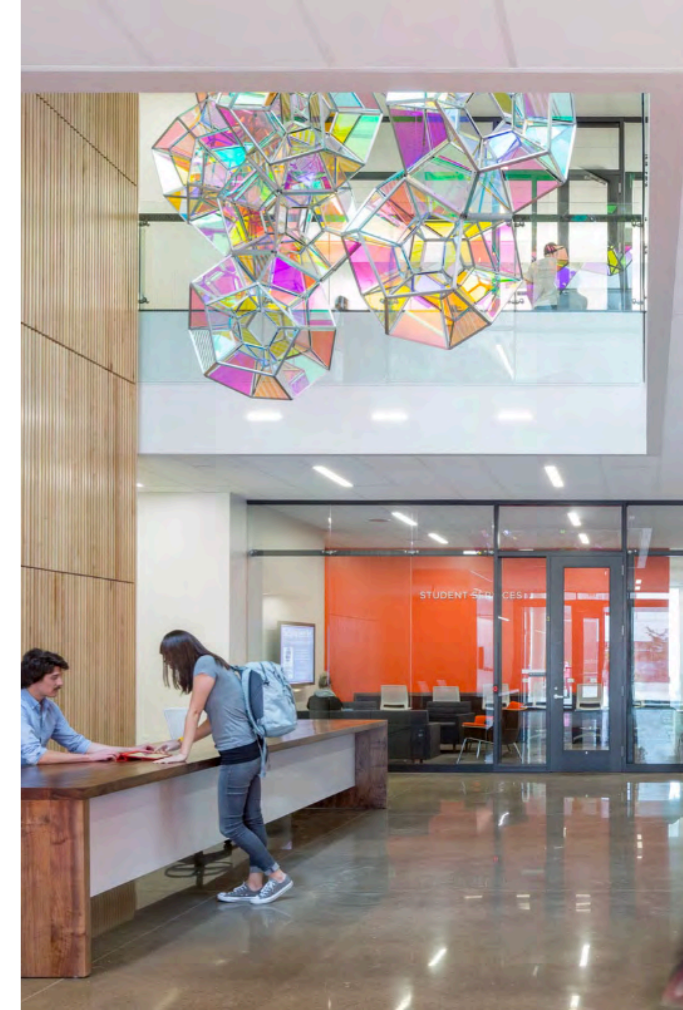
ZIMMER GUNSUL FRASCA ARCHITECTS LLP



SRG

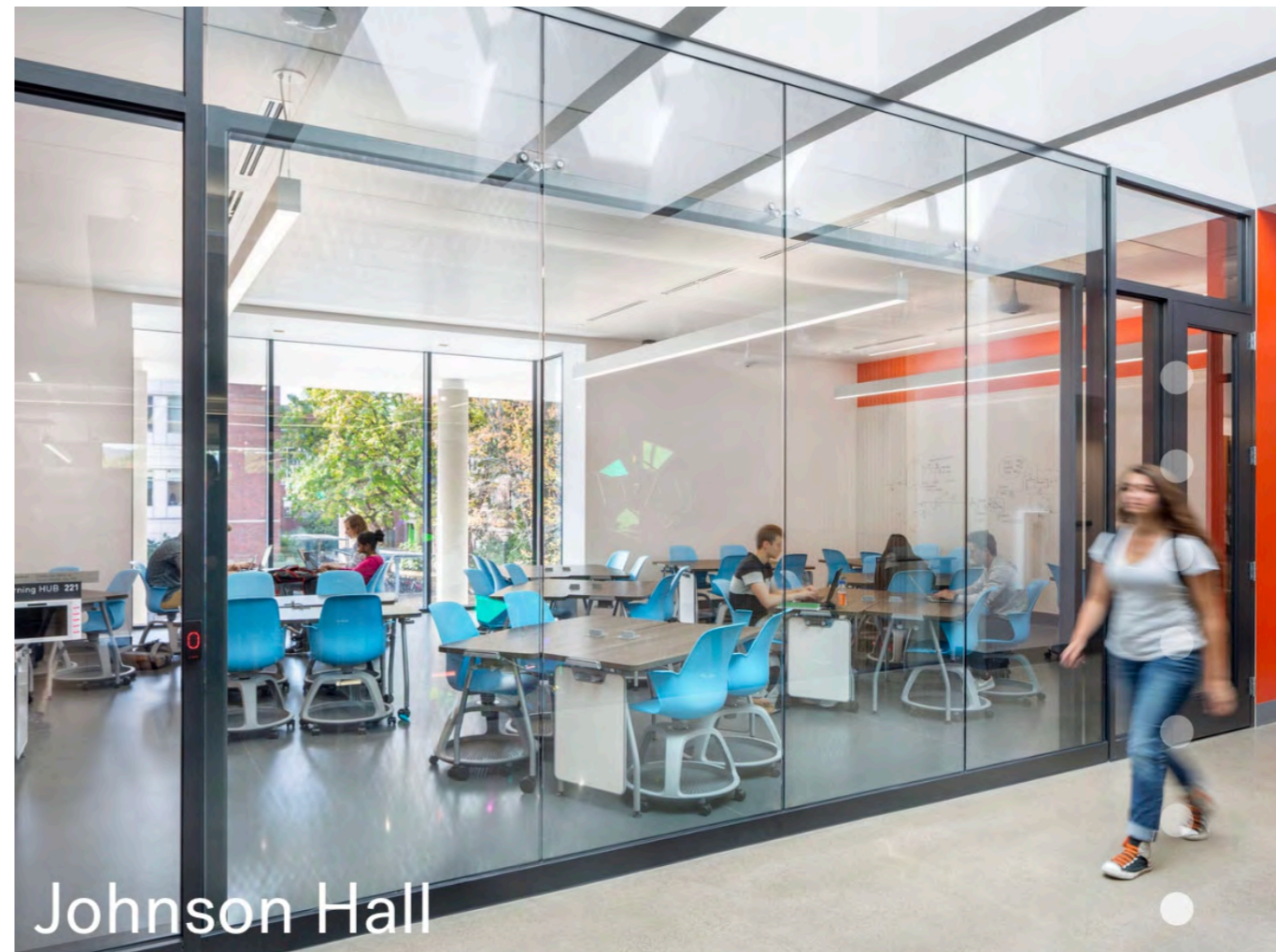


Oregon State University



Johnson Hall

Oregon State University's Johnson Hall included both new slabs and cementitious overlays that received polished concrete finishes. Working for SRG Partnership, this was one of the first projects on the West coast to employ micro surface texture measurements as benchmarks to polished refinement. *SRG Partnership*

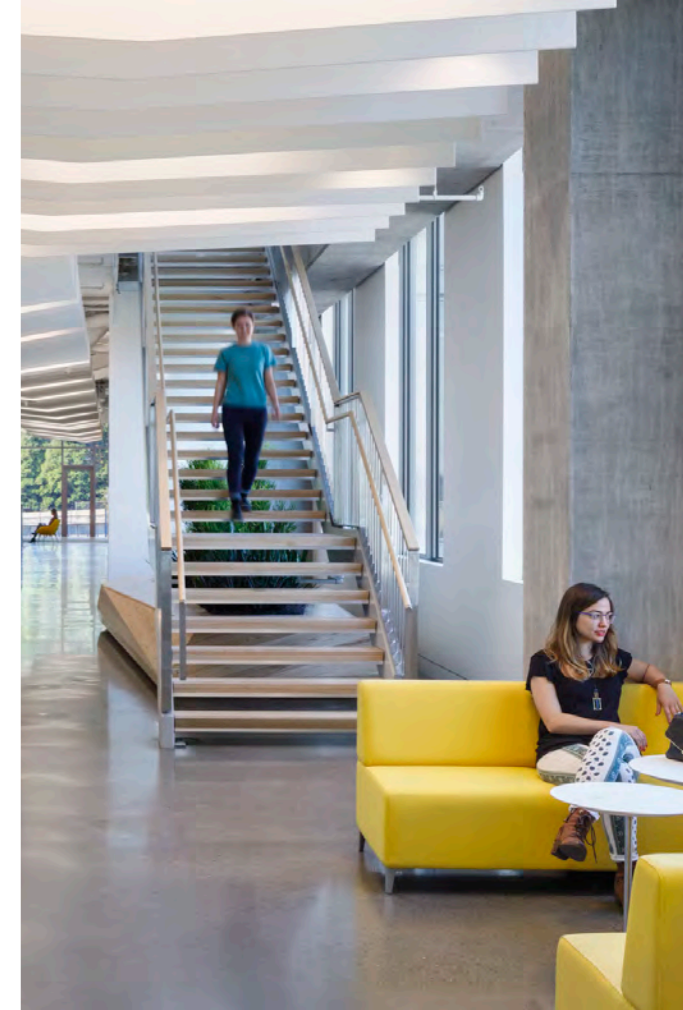


SRG



Cancer Institute

Oregon Health and Science University's Knight Cancer Institute sought a state-of-the-art cancer research facility that would support and facilitate a team science approach. Sustainability was key. Working with specification team, quantifiable benchmarks were included to defend design intent and avoid less sustainable substitutions to ultimately help achieve LEED platinum certification.



Knight Cancer Institute

Oregon Health and Science University



Certified LEED Platinum by US Green Building Council (USGBC).



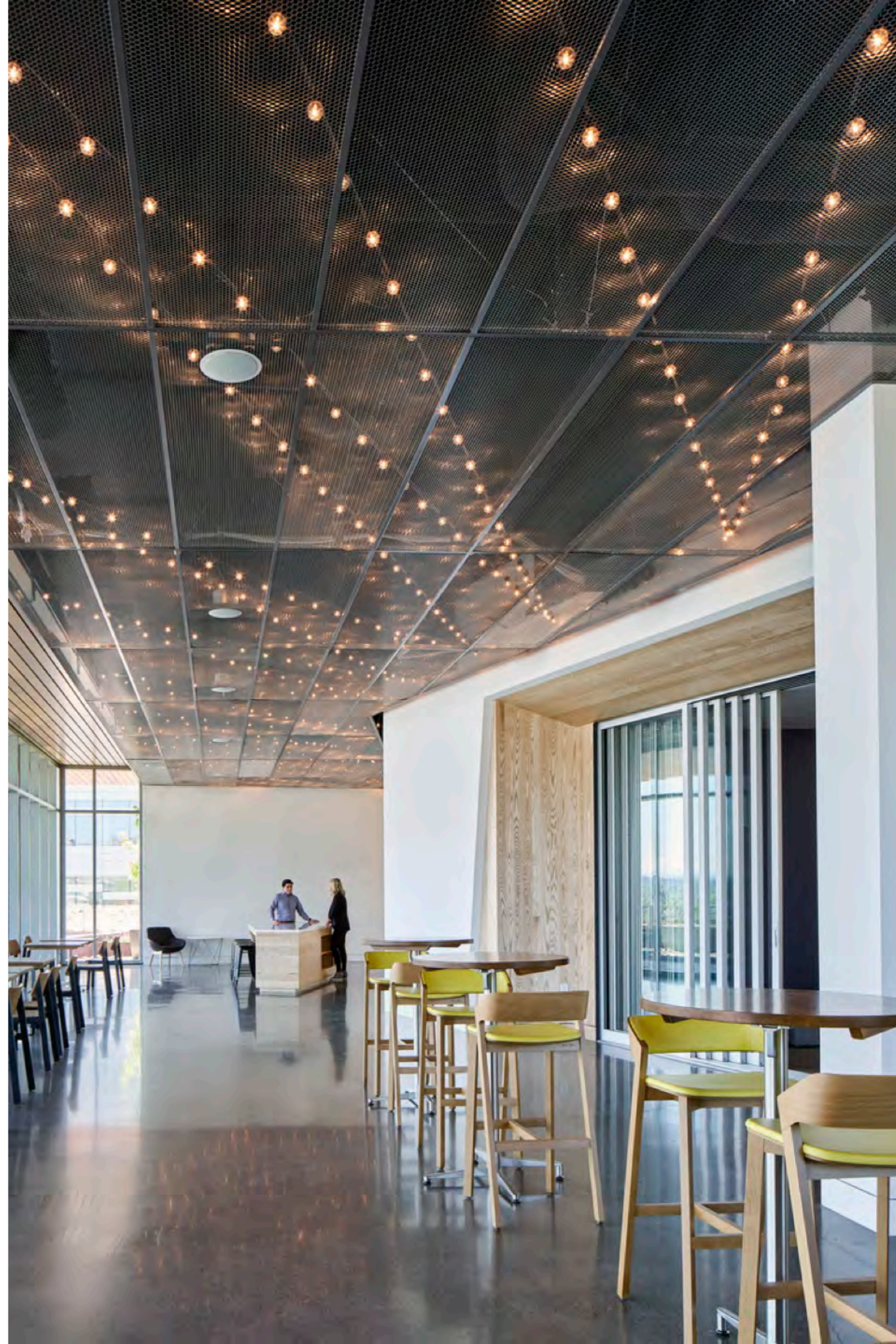
DJC TopProjects, First Place, Health Care, 2019



ACEC Oregon, Engineering Excellence Honor Award, 2019



Surface micro texture (Ra) requirements to ensure design intent fulfilled





LRS
ARCHITECTS
PORTLAND | SHANGHAI

NEW SEASONS
MARKET

Tualatin's New Seasons location wanted fresh, flat and natural exposed concrete floors for their new location. The floors were finished to a semigloss finish (16µin).
LRS Architects, R+H Construction

DIBENEDETTO/THOMSON/LIVINGSTONE ARCHITECTS

ESCO[®]
A Weir Group Division

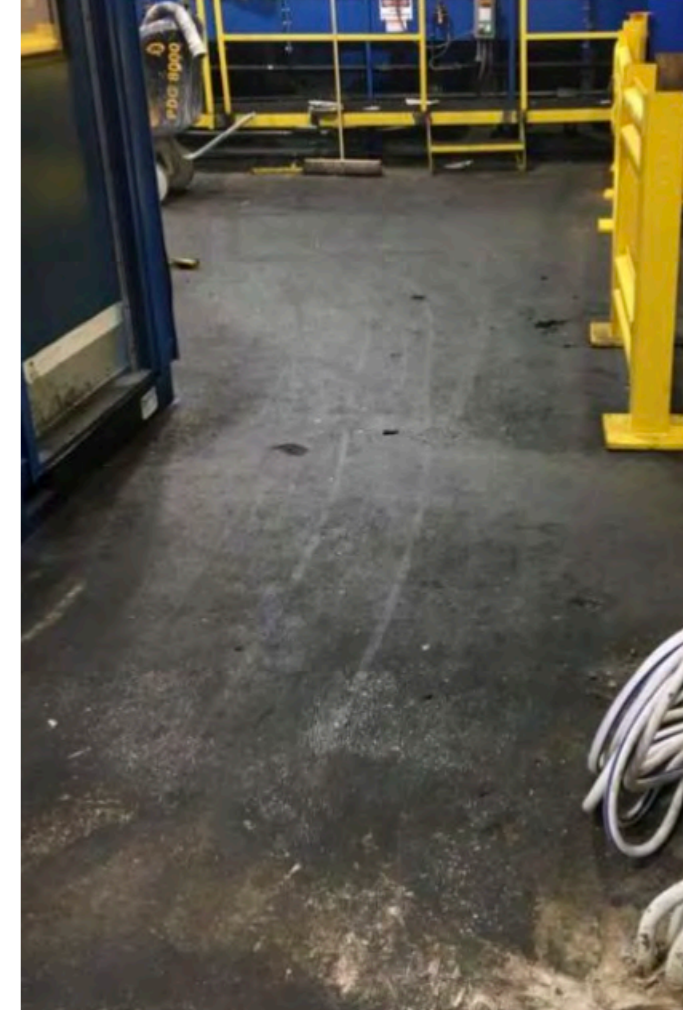
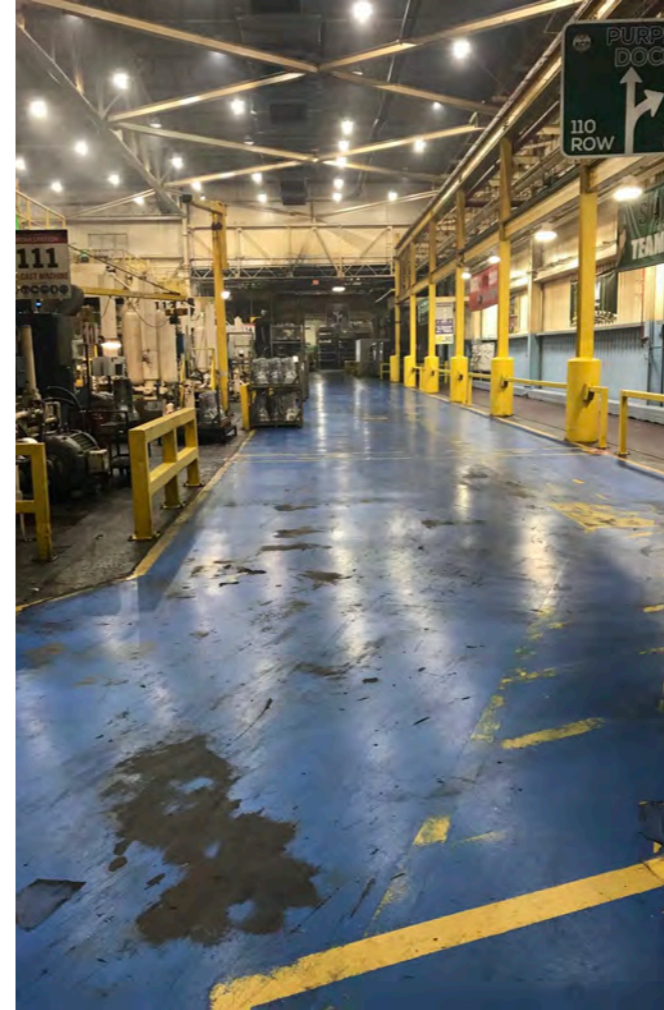
The Weir Group's ESCO[®] division engineers, manufactures and services innovative mission critical equipment used by companies in mining and infrastructure markets around the world.

Their Portland floors needed to be physically resistant to the abuse of high traffic rolling loads in an industrial setting. The facility's original slab-on-grade was ground and then refined to 16µin after receiving an epoxy grout coat.





FIAT CHRYSLER AUTOMOBILES



Ending the cycle of epoxy coatings at the world's largest die cast plant was paramount to saving costs to the environment and FCA's bottom line. For both new and existing slabs hydro cements were used in place of traditional admixtures and topical solutions to provide resilient floors that are easy to maintain and no longer require halting plant production to service the concrete floors.

b8ta

Gensler



b8ta Mission Bay

b8ta is a software-powered retail store designed for discovering, trying and buying new tech products. As the brand expands into multiple locations, including the flagship Mission Bay location in San Francisco, Gensler has designed innovative retail stores that focus on product discovery and interaction. Floor solutions included durable polishable overlay and exposed concrete finishes for structural slabs.



Cadillac House

Targeted at New York's young, creative tastemakers, Cadillac House SoHo provided a one-of-a-kind interactive experience to redefine and leverage the iconic luxury brand.

The existing exterior slab had the dangers of freeze-thaw above and the heat of the boiler room below. High Ff/FI requirements were designed in to keep the slab in good shape for years to come.



2017 Retail Week Interiors Awards -
Best International Store »



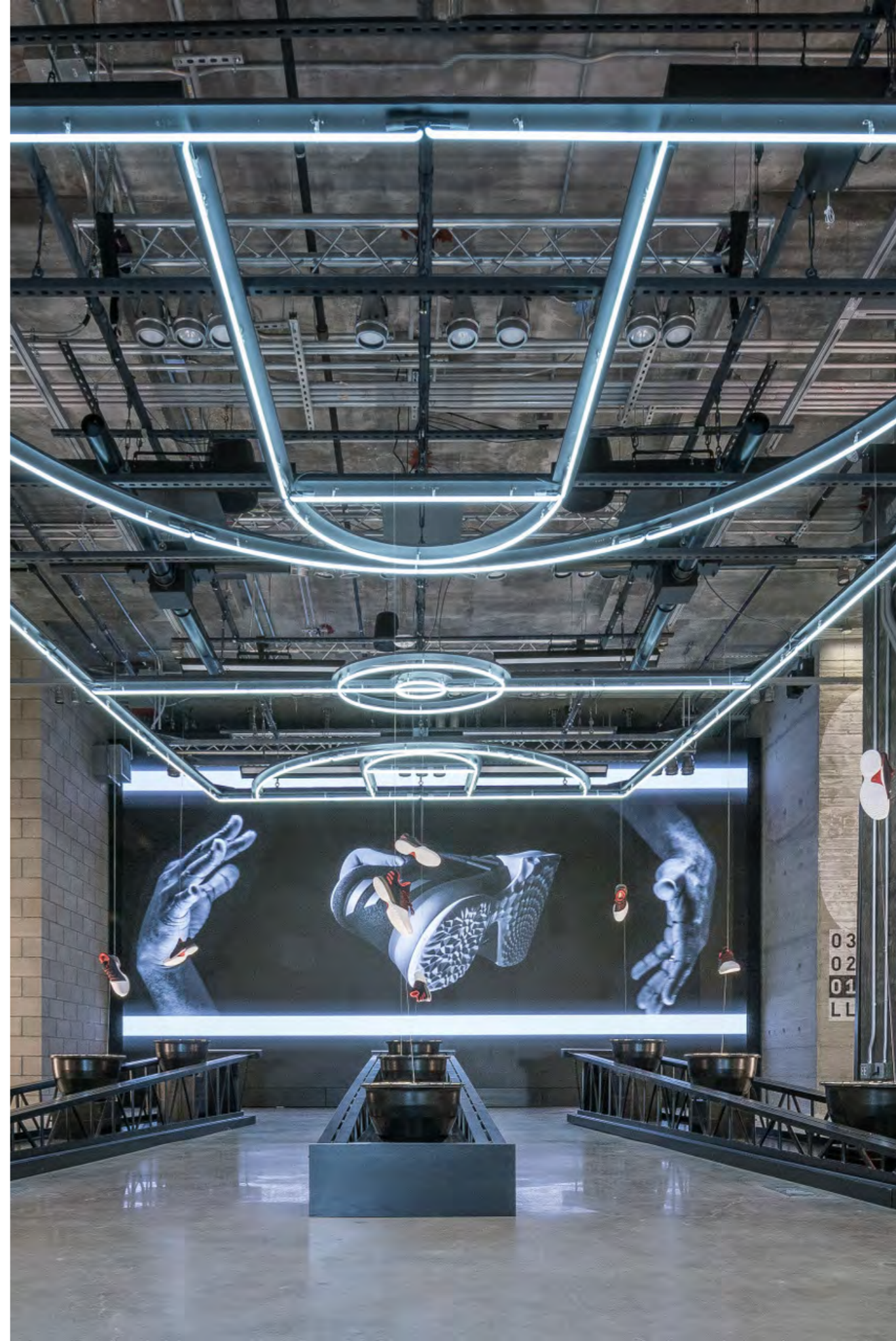
adidas NYC scores Best Retail Store
Design at the 2017 MAPIC Awards »



2018 Innovation by Design Awards –
Honorable Mention, Retail
Environments »



2017 SARA National Awards – Design of
Honor Award, Commercial Retail
category »





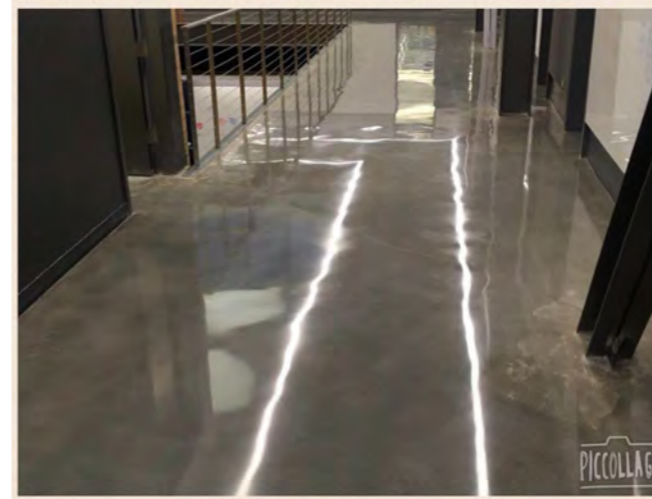
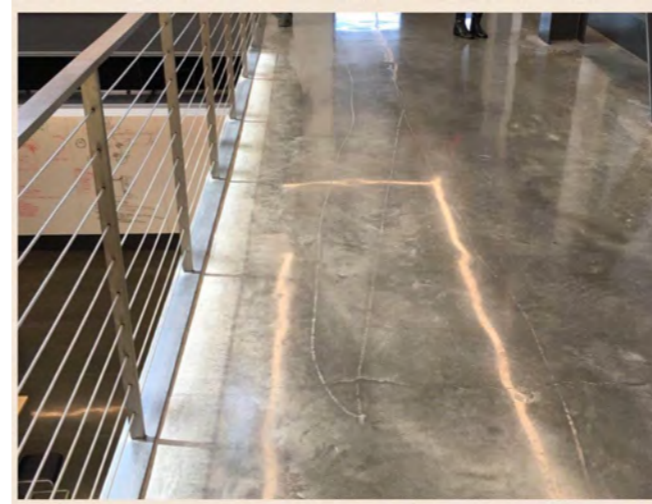


Gensler

Hajjar STEM Center

Dwight-Englewood School Hajjar STEM Center, a school building in New Jersey that would bring cutting-edge technologies together in keeping with the spirit for the intended use of the facility.

Initially subcontractor did not meet benchmarks as quantified in specification resulting in a subpar floor. Repairs and reprocessing of concrete were required to meet requirements while protecting owner from additional costs.



Hines

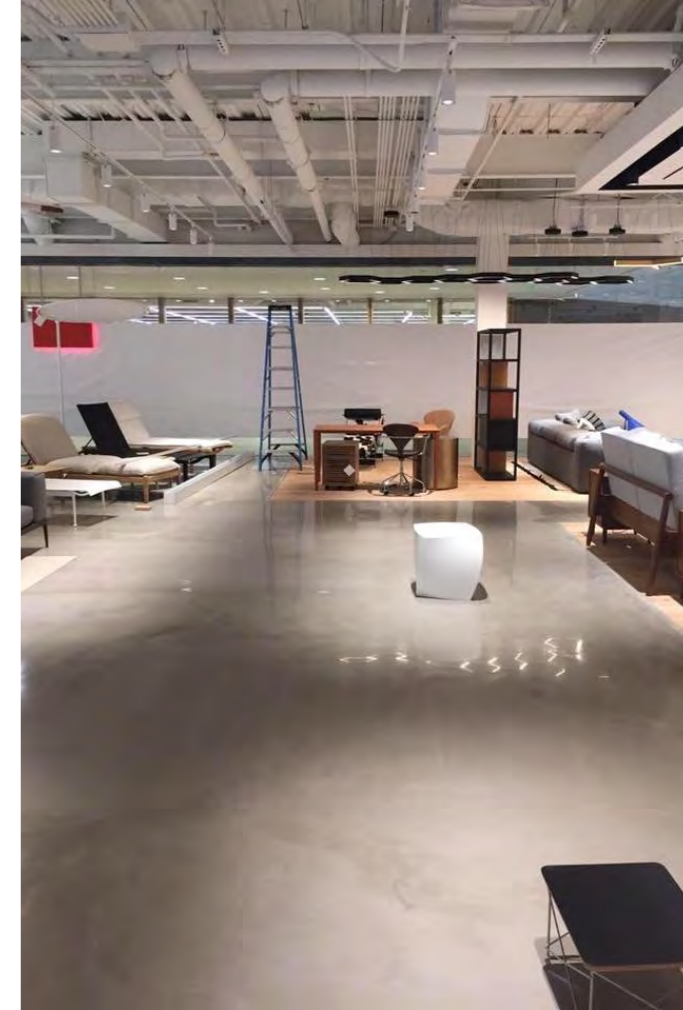
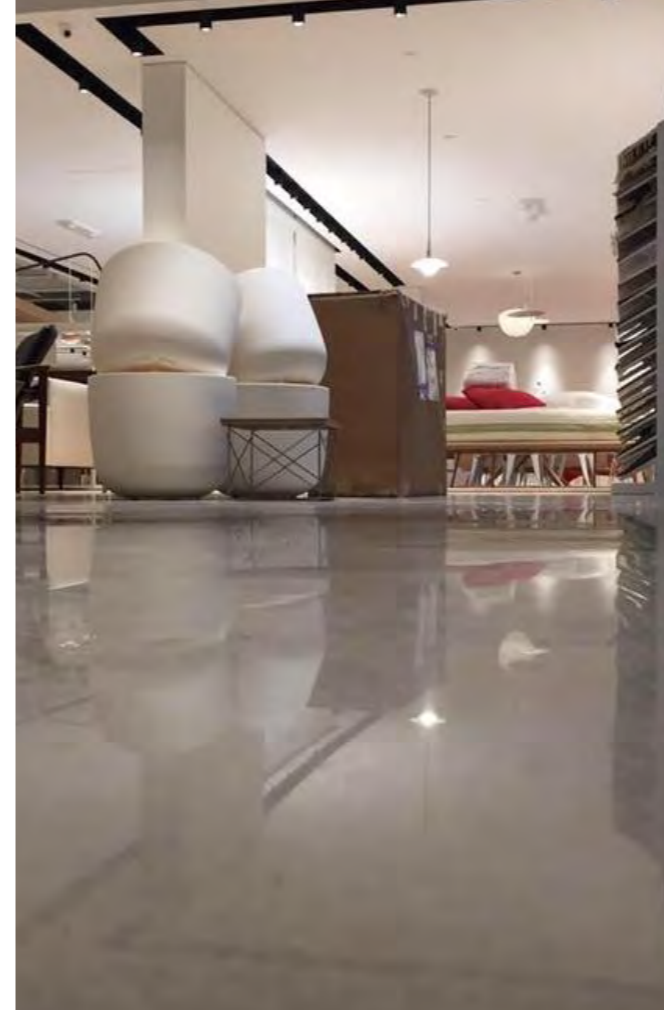
DFA



GALLERIA

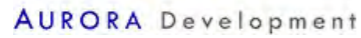
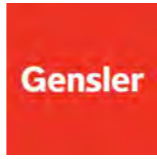
For the luxury retail Hines property in Edina, MN a new level of polishable overlay was required to achieve aesthetic benchmarks that hinted at marble while still enjoying the resilience of concrete.

Inclined surfaces and wood finishes sharing the floor spaces presented challenges, but a truly beautiful floor resulted in the end.



Friends and Clients

www.BennettBuild.us



BENNETT BUILD

