

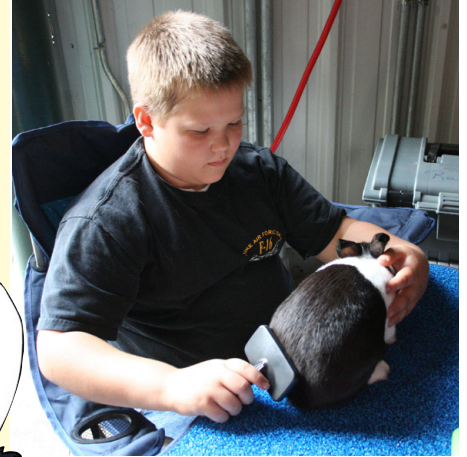


YOU can start a 4-H rabbit project!

You need a rabbit

Study different breeds. Consider rabbit size and temperament. Talk to local breeders. It is usually better to purchase your rabbit from a reputable breeder. Cost is around \$20.

Helpful Web sites: www.arba.net & <http://lancaster.unl.edu/4h>



Suggested breeds for youth and some local breeders*

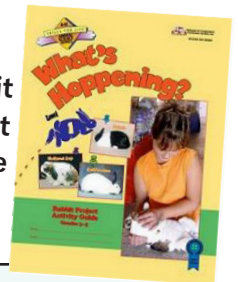
These breeds are small sized with good temperament.

- Holland Lop** Rosa Fields, rosashopshop@hotmail.com
- Holland Lop** Hannah Bellinghausen, (402) 420-2264
- Holland Lop** Mark Hurt, (402) 488-0722
- Florida White** Gordon Maahs, (402) 782-6380
- Jersey Woolies & Fuzzy Lop**. Kaye Thurston, (402) 450-9617
- Himalayan/French Lop** Kaiya Green, (402) 791-2066

You can keep your rabbit indoors or outdoors.

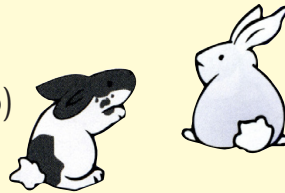


4-H Rabbit Project Guide



Supplies needed

- Cage** \$25 or \$40 for supplied start up kit
- Bedding for waste. . \$2-6 for pine shavings or pellet bedding
- Water bottle \$5
- Food dish \$1-\$8
- Pellet food \$5 (2lb) to \$15 (50lb)
- Grooming brush . . . \$4
- Nail trimmer \$8



(*for small rabbit breeds such as those listed above – use a 24" x 24" x 16" cage)

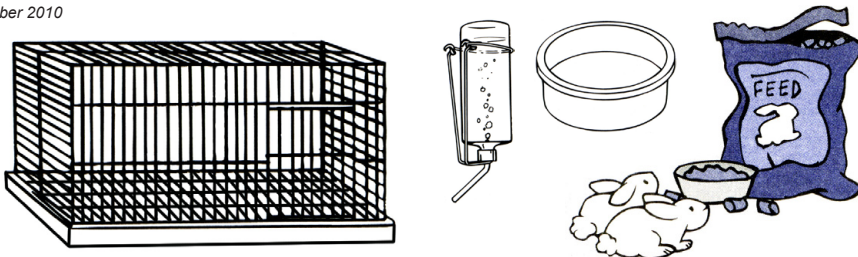
Some local sources* for rabbit supplies

- Tractor Supply Company**
7200 Husker Circle, (402) 476-2292
9000 Amber Hill Court, (402) 420-0011
- Orschlen Farm & Home**
5640 Cornhusker Hwy, (402) 466-1191
- Wal-Mart**
4700 N. 27th Street, (402) 438-4377
3400 N. 85th Street, (402) 466-0447
8700 Andermatt Drive, (402) 484-6166

Most pet stores carry rabbit supplies as well

For more information, contact Marty at UNL Extension in Lancaster County at (402) 441-7180

October 2010



*These lists are for your convenience, they are not complete, and information may change. Use of commercial and trade names does not imply approval or constitute endorsement by UNL Extension.



Extension is a Division of the Institute of Agriculture and Natural Resources at the University of Nebraska–Lincoln cooperating with the Counties and the United States Department of Agriculture.

University of Nebraska–Lincoln Extension's educational programs abide with the nondiscrimination policies of the University of Nebraska–Lincoln and the United States Department of Agriculture.