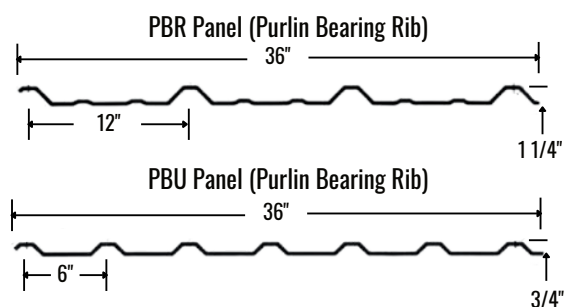


# Our Services

**My Metal** is a full-service metal manufacturer. We manufacture our metal paneling and trim using only the highest quality materials right here in New Mexico.

We strive to give our customers the best products and service, and we will do our best to make your project or idea a reality. Whether you have a project, big or small, let our friendly sales team help! We will do our best to make you, our valued customer, satisfied with our products and prices.

## Panel Profiles



At **My Metal**, we offer over 20 colors of paneling and trim to give your home the look and feel you want. Our paneling and trim are manufactured right here in New Mexico out of 26 gauge domestic steel and is UL 2218 classified for impact resistance Class 4. We are proud to offer a 40-year limited paint warranty on all colors.



## Contact Us

### Clovis

☎ 575-763-2662  
📍 1379 US 60/84  
Clovis, NM 88101

### Ruidoso

☎ 575-808-9552  
📍 1096 Mechem Dr., Suite 311  
Ruidoso, NM 88345  
Find us inside Lincoln Towers

### Roswell

☎ 575-578-1539  
📍 5368 West 2nd  
Roswell, NM 88201



gomymetal.com



**We've Got You Covered in  
More Ways than One!**

**Metal Roofs and Fences  
Trim and Accessories  
Steel Buildings  
Cold-Formed Buildings  
Structural Steel  
Garage Doors**

[www.gomymetal.com](http://www.gomymetal.com)



## Roofing

If you're in need of a new roof, try **My Metal** for the quality, durability and look you want! Steel roofing is not only an attractive addition to your home, but a smart choice as well. Many of **My Metal's** coil coatings meet Energy Star ratings which can lower your energy costs and insurance premiums!

Looking for a more traditional look with the quality and durability of a metal roof? **My Metal** has partnered with **Tilcor Roofing Systems** and **Met-Tile** to offer metal paneling with traditional styles like cedar shake and Spanish tile. Contact us for more information.

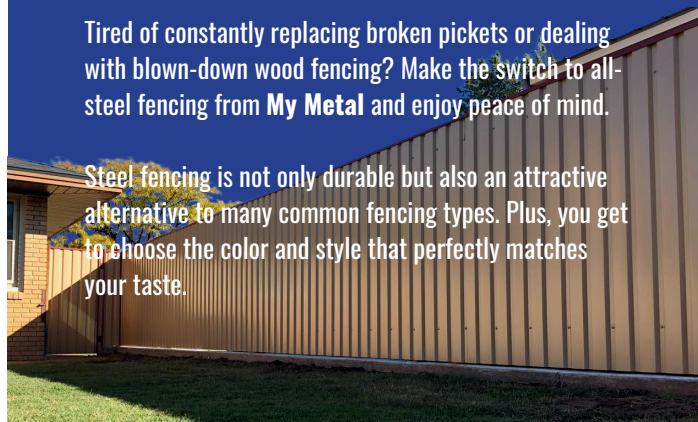
If you would like a free estimate, bring us a drawing with measurements and we can figure the package for you. If you need a contractor to do the work, let us know! We work with all the top roofers in the area and can get you set up to fix it and forget it.



## Fencing

Tired of constantly replacing broken pickets or dealing with blown-down wood fencing? Make the switch to all-steel fencing from **My Metal** and enjoy peace of mind.

Steel fencing is not only durable but also an attractive alternative to many common fencing types. Plus, you get to choose the color and style that perfectly matches your taste.



## Pre-Engineered Buildings

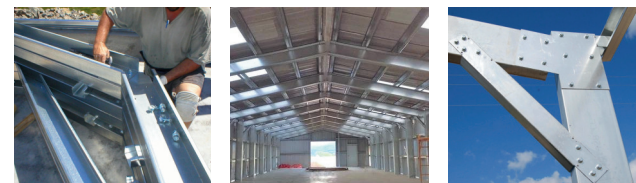
**My Metal's** pre-engineered buildings are designed to meet your needs whether your projects are commercial, residential, agricultural, or industrial!

- Engineered to local and state building codes
- Simple bolt-together design
- 40-year Limited Warranty Standard for Walls and Trim
- PB-R paneling standard, versus traditional R-Paneling (Better Coverage, Strength and Weathertightness)



## Cold-Formed Buildings

**My Metal** is excited to now be offering Cold-Formed Buildings! It's not often that a new product creates real change in an industry, but Cold-Formed Buildings have done just that! Cold-Formed Buildings can be a great economical option to traditional pre-engineered metal buildings. Each building ships with stamped engineering for both the building and foundation, so you can feel confident that you're always buying a quality product.



Cold-formed buildings save time and money!

- Shorter lead times
- Quicker installation
- Reduced onsite fabrication
- 20-25% less concrete
- No preset anchor bolts
- Lower equipment fees



### Design Your Cold-Formed Building

It's a breeze to unlock your imagination and bring it to life when you use our innovative online building design platform. Scan the QR code to start designing today and a **My Metal** employee will contact you within 48 hours with your quote.

