

# POWER BI DASHBOARD SERVICES

## ● Starter

For solo professionals or small business owners who need one powerful dashboard.



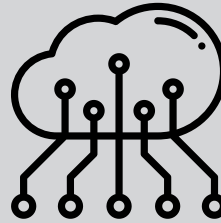
### What's Included:

- 1 custom Power BI dashboard
- Up to 3 visuals
- Excel/CSV data clean-up
- 1 round of feedback + revision
- Delivery in 3–5 business days

**£100**

## ● Pro

For growing businesses who need layered dashboards and ongoing support.



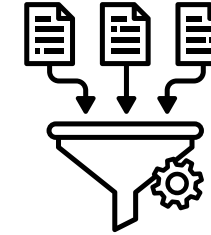
### What's Included:

- Everything in Starter, plus:
- Up to 3 connected dashboards (multi-page view)
- Up to 10 visuals across pages
- Custom navigation panel
- Dynamic filters and slicers
- Email support for 7 days after delivery

**£200**

## ● Elite

For organisations that need tailored data solutions, automation, and collaboration-ready reports.



### What's Included:

- Everything in Pro, plus:
- Data source integration (SharePoint, OneDrive, online Excel)
- Advanced visuals (map, waterfall, matrix, KPIs)
- Power Query transformations
- Report-level filters and bookmarks
- Embedded dashboard code for website sharing

**£300**