



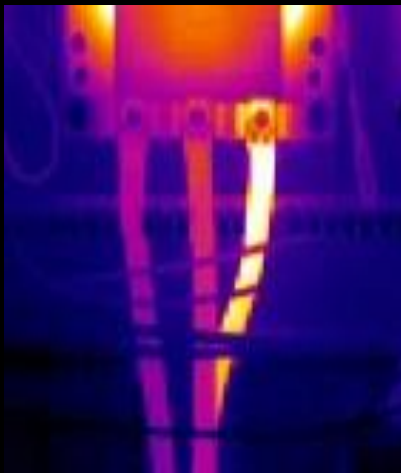
T Series

Entry-level Portable Thermal Camera



Building Diagnostics
HVAC Inspection
Facilities maintenance
Electrical Application

T120 Series Entry-level Thermal Image Camera is an affordable temperature measuring tool widely used for building diagnostics, HVAC inspections, electrical system inspections and more. It perfectly overcomes the shortcomings of the single spot infrared thermometers and helps work smarter, safer and faster. Equipped with Guide's self-developed 120x90 WLP IR modules, T120 series thermal cameras can display radiometric data of 10,800 pixels instantly which helps quickly detect large areas and pinpoint fault spots accurately. It can also easily save images and data, and download fast via USB, removable TF card or WIFI.



- **Boot-up in 1 second**
Boot up and display fully radiometric image instantly
Full screen max & min temperature alarm
- **2.4 inch Large Display**
240x320 pixel Color LCD
- **Good-handle Buttons**
Ergonomic design
Easy to operate even wear the gloves
- **8-hour Battery Life**
Low power consumption,
Large capacity battery
- **2-hour Quick Charge**
USB Type-C Interface
High power quick charge
- **IR/Visible/Laser Indicator**
Pinpoint targets precisely
- **Trigger Button**
Trigger button for photo taking
- **Rugged Design**
2-meter Drop Test, IP54 Encapsulation

Specifications

Model	T120	T120V
IR image & Optical		
IR Resolution	120×90@17μm	
Detector type	VOx/7.5~14μm	
Frame Rate	25HZ/9HZ	
Thermal Sensitivity / NETD	60 mk	
Focal Length	2.28mm/F1.13	
Field of view(FOV)	50°×38°	
Spatial Resolution(IFOV)	7.6 mrad	
Focus	Focus-free	
Visible Camera		
Visible Camera Resolution	N/A	320×240, Focus-free
Flashlight	N/A	Yes
Image Display		
Display	2.4 inch IPS technology TFT display	
Display Resolution	320×240	
Image Model	IR image	IR/Visible/Picture-in-picture
Color Palettes	6:White Hot, Iron Red, Hot Iron, Arctic, Rainbow 1, Rainbow 2	
Temperature Measurement		
Temperature Range	-20°C-150°C, 100°C-400°C (Auto switching)	
Accuracy	±2°C or ±2%, whichever is greater (target temp ≥0°C, ambient temp is 15°C ~ 30°C)	
Measurement Spot	Center spot	
Measurement Area	3(incl. max & min temp)	
Auto Hot & Cold Spot Tracking	Yes	
Alarm	Full Screen Max & Min Spot Alarm	
Image Storage		
Storage Media	TF card (Standard 16G, up to 32G)	
IR Image Format	Full Radiometric (JPG) (120 x 90)	
Visible Image	N/A	Yes, 320 x 240
Connections & Communications		
USB	TYPE-C、TF Card slot	
Laser	Yes	
Tripod interface	Yes	
WIFI	N/A	Yes, image transmission available
Mobile APP	N/A	Yes
PC IR Analysis Software	Yes	
Power System		
Battery Tpye	Rechargeable Li ion battery	
Battery Operating Time	> 8 hours	> 5 hours
Charging Time	Internal charge , ≤2.5 hours	
Environmental Parameters		
Operating Temperature	-10°C~50°C	
Storage Temperature	-40°C~70°C	
Encapsulation	IP54 , 2-meter drop test	
Certification	CE/ROHS/FCC	
Weight	about 350g	
Size	194mm*61.5mm*76mm	
Standard Accessories	Charger + Adapter, TYPE-C USB cable, Wrist Strap, Quick start Guide, Data Download Card, 16G TF Card	

Contact us :



Company : South Instruments Technology Limited
 Address : Rm 6K, Blk 2, Kin Ho Ind. Bldg, 14-24 Au Pui Wan St., Shatin, N.T., Hong Kong
 Tel : (852) 9293 3993 Fax : (852) 3105 0141 Email : sales@southsurvey.com.hk



Company : YSF Corporation Ltd.
 Address : 5A, Blk 1, Kin Ho Ind. Bldg, 20-24 Au Pui Wan St., Fo Tan, Shatin, N.T., Hong Kong
 Tel : (852) 8109 8368 Fax : (852) 3007 4857 Email : sales@ysftool.com