

INNOVATIVE COMPOSITE MANHOLE COVERS – MADE IN THE USA



CAP ONE



CAP RF



CAP STONE



Just CAP That!

COMPOSITE ACCESS PRODUCTS, L.P.

5216 N.26TH STREET | MCALLEN, TX 78504 | (844) 344-CAP1 (2271) | (956) 765-2907 | FAX: (956) 797-7455

WWW.JUSTCAPTHAT.COM

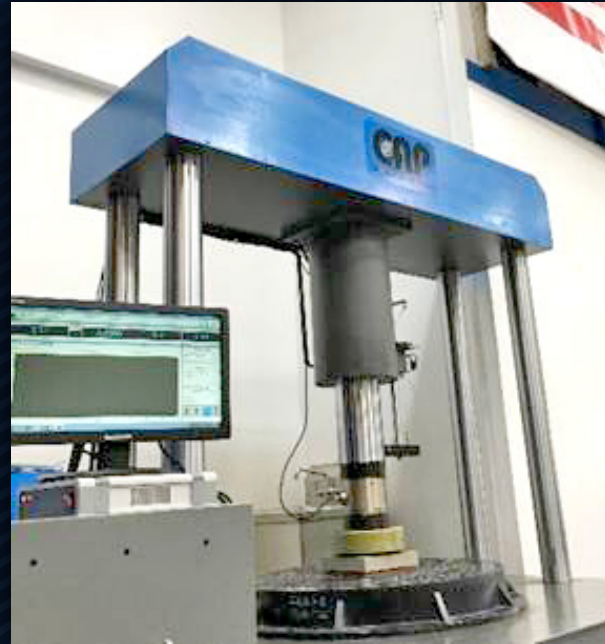
ABOUT THE COMPANY

Composite Access Products L.P. (CAP) is a manufacturing company based in McAllen, TX, USA. Our mission is to improve utility access with a better solution to an old application. Composite manhole covers solve many problems associated with the outdated iron options.

Composite experts at CAP have finally produced the affordable and high quality solution for municipal use. Just CAP That!



High Strength Compression Molded



On-site Proof Load Testing Capability

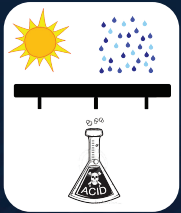


Multiple Colors, Logos, Locking, and Pick Hole Options

CAP COVERS SOLVE COMMON IRON COVER HEADACHES



High Strength: Third Party Certified for AASHTO M-306-10, H-20 and H-25 Proof Load



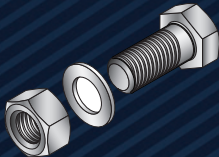
Corrosion Deterrence: Prevents H₂S decay fusing the frame & cover shut. No sledge hammer needed to open!



Anti-Theft: No metal content and no scrap value for thieves. Prevent falling injuries.



Lightweight and Safe for Lifting: 50% lighter than Cast Iron, ergonomically recommended.



Locked to Frame: No Fly ups. Deters non-authorized access.



Wave Permeable: RFID, Cellular, and other signals pass through. . . no penetrating cables to shield or attach.



Insulating: Pedestrian & Pet safe. Not a conductor of electricity or heat.



APPROVALS

TEXAS DEPARTMENT OF TRANSPORTATION (TXDOT)



TxDOT approves the use of the Composite Manhole Cover and Frame when being placed outside the roadway/ clear zone and within the roadway/ clear zone.

THIRD PARTY CERTIFIED TO M-306 H-20 AND H-25

CONCLUSIONS

The Provided covers comply with the requirements of section 6.1 Proof-Load Test H-25 specified in AASHTO Standard M 306-2.

The University of Texas
Rio Grande Valley

Materials Engineering Laboratory
Department of Mechanical Engineering

PRODUCT DETAIL SHEET

Pedestrian Safety

- Will not conduct electricity
- Greatly reduces possibility of burns from contact
- Slip resistance
- Tread pattern promotes water movement
- No scrap value virtually eliminates coverless manholes resulting from theft
- Predicted strength to surpass 6 x safety factor over US DOT 16,000 lb

Product Geometry and Accessories

- See Product Offering table.
- Concealed pick holes
- Watertight gasket available to prevent infiltration
- CAP-547 double hinged product with 180 degree rotation
- Concealed pick holes to prevent infiltration
- Through pick holes optional
- Vent holes optional

Composition and Production

- Blend of polyester/ vinyl ester thermosetting resin, inorganic fillers, fiberglass
- Over 40% fiberglass reinforced
- Additives to promote UV and weather resistance
- High pressure molded to eliminate voiding and porosity
- High temperature molded for completely cured thermoset matrix
- Closed-mold process reducing volatile loss. Product was not casted.

Installation & Maintenance

- Product safe to be installed by one person. Team installation recommended
- Set frame in concrete. Holes in frame flange allow bolts to anchor in concrete
- For unhinged models, align locks on cover to mating receiver cavity on frame
- Secure Cover to frame with attached bolts
- Cover will not fuse to frame due to corrosion. Avoid striking cover and frame with sledge hammer

Labels

- Manufacturer Name
- Country of Origin
- AASHTO H-20 and H-25
- Custom city names or added communication
- Manufacturing Date for traceability (CAP ONE)

Application – Corrosion and Chemical Resistance

- Sanitary Sewer, Storm Sewer and Drains
- Gas Station tanks
- Grease Traps
- Chemical tanks
- Telecom and Electrical
- Traffic Controls



Composite Access Products

5216 N.26th Street

McAllen, TX 78504

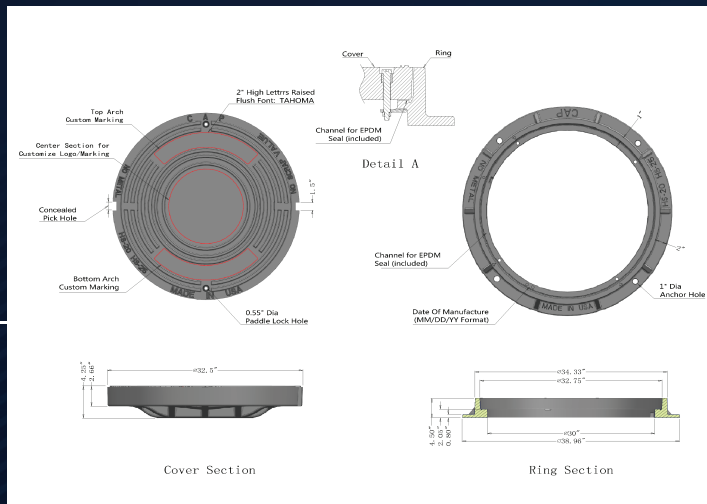
1-844-344-CAP1 (1-844-344-2271)

sales@CompositeAP.com

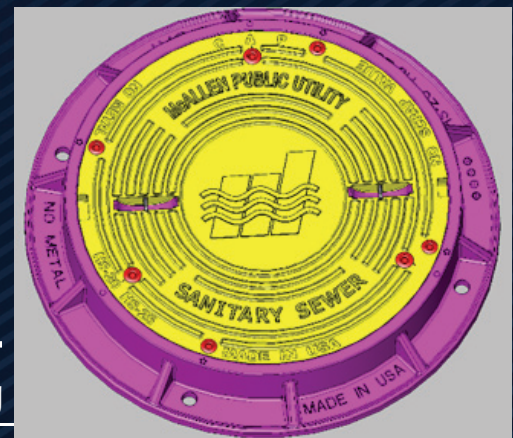
www.justCAPthat.com

PRODUCT OFFERING

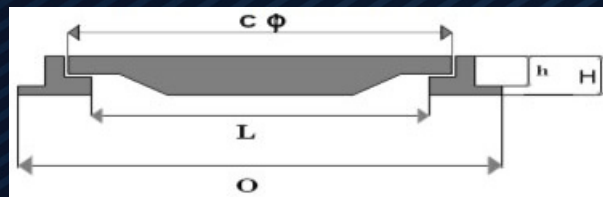
CAP ONE-30 30 Inch Clear Opening



CAP-900 36 Inch Clear Opening



CAP ONE-24 24 Inch Clear Opening



Series Nos	AASHTO M306 Proof Load	Clear Opening (L) inch	Frame Weight lb	Overall Size (O) inch	Depth (H) inch	Depth (h) inch	Cover weight lb	Cover Size (C) inch	Total Weight lb
CAP 547 (Hinged)	HS-25	22	35	32	3.9	3.2	54	24	89
CAP 605	HS-25	24	30	31	3.6	3.1	69	26	96
CAP ONE - 30	HS-25	30	62	39	4.5	3.7	101	32.5	163
CAP 900	HS-25	36	44	42	4.4	3.6	121	39	165

Introducing The CAP RF

PATENT PENDING

Composite covers with encapsulated radio frequency identification

- Asset tracking
- GIS Compatible
- Information available at fingertips
- No exterior antenna wire, battery, fasteners
- Molded-in Protection: RFID Will Not Corrode or Break off

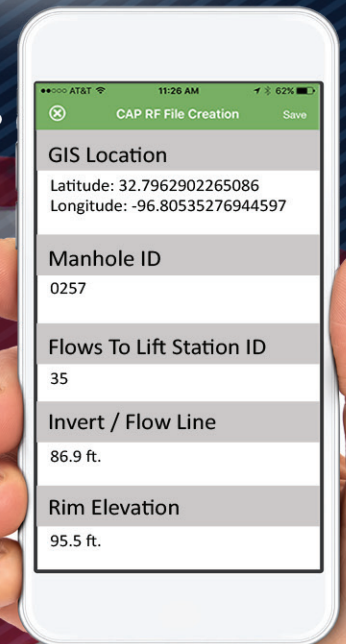
All without opening the cover



RF Scanner



Just CAP That!



Innovation, Infrastructure, Made-In-The-USA



How To Choose Composite Covers... Five Questions to Ask

1. Where was it manufactured?



Made-In-The-USA is important:

- Avoid sending tax-payer funds to foreign manufacturers & comply with federal law
- Traceability to raw materials, Short Lead Times, Local Service
- Consistent quality – no shortcuts

If no Country of Origin is explicitly on top, it is Chinese and does not comply with AASHTO rules. CAP is Made-In-The-USA!

2. Are locks 316 Stainless for corrosion resistance?



- Metal Locks Can Corrode if not 316 stainless steel (specifically Austenite)
- Corroded Hardware could seize and break
- Use a magnet to test...Austenite is not attracted by magnetic forces

A lock system attracted to magnets (like the latch and bolt lifted by the red magnet in photo) is NOT corrosion resistant. CAP uses only corrosion resistant lock assemblies.

3. How Thick is the Frame Wall?



- A full 7/8 inch composite wall is extremely strong
- Thin composite frame walls can fracture over time with vehicle wheel strike

CAP's robust frame design with double the wall thickness of the thin import

4. Compression Molded or RTM?



- Compression Molded Composites are High Volume, High Speed, and Affordable
- High tonnage imparts high strength
- RTM covers can be too light...manhole covers are not supposed to be Frisbees
- Compression Molding Pushes Trapped Gas Out of Part

CAP Covers are pressed with 800 tons and done in less than 10 minutes

5. Which UV protection additives?



- Absorber, Quenchers, or H.A.L.S.?
- Carbon Black is a good Absorber, but is it enough?
- Resin chemistry and Inorganic fillers can play an important role as well.

CAP Composite Experts Can Answer these questions...Let's talk!

Just CAP That!

COMPOSITE ACCESS PRODUCTS, L.P.

5216 N.26TH STREET | MCALLEN, TX 78504 | (844) 344-CAP1 (2271) | (956) 765-2907 | FAX: (956) 797-7455
WWW.JUSTCAPTHAT.COM