

## substance use disorder

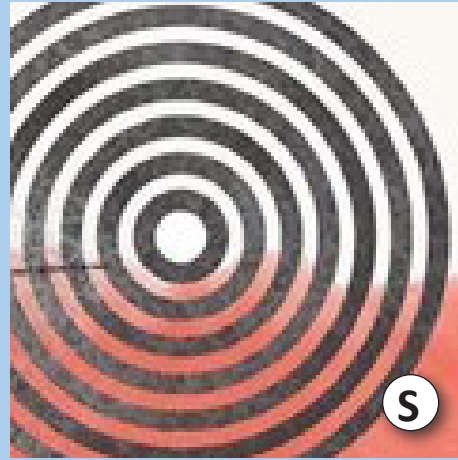


### ANY ADDICT

This production encourages discussion and decreases stigma about substance use through the lens of those who have lived with a substance use disorder and survived.

*Written by Michael Kennedy, based on interviews with people recovering from substance use disorders.*

**Running time:** approx. 45 minutes



### EPICENTER

A devised theater production created to raise awareness and offer a sense of community to those who love someone with a substance use disorder.

**Running time:** approx. 40 minutes

## racism

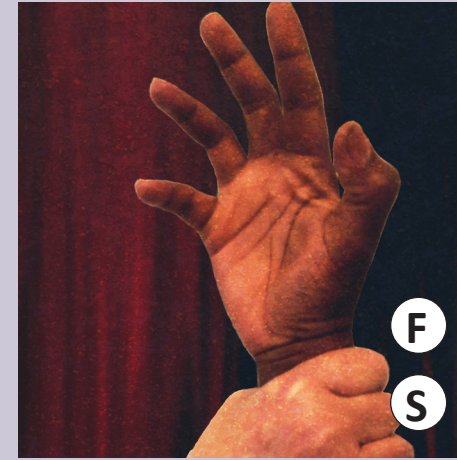


### WHITEWASHED: THE RACISM PROJECT

This production confronts white fragility and internalized racism by presenting the history and present day experiences of being Black in America.

*Written and performed by an all-Black cast.*

**Running time:** approx. 75 minutes



### THE CLIMB

This film raises public awareness and inspires community action about America's systemic economic oppression of Black people.

**Running time:** approx. 45-60 minutes

## housing instability



### SHELTER

This film raises awareness about the fragility of housing security in America by presenting four intersecting stories about individuals and families struggling with current or potential homelessness.

**Running time:** approx. 45 minutes



### SRO:

#### SINGLE ROOM OCCUPANCY

This production explores the inadequacy of social service systems by telling the story of three single women struggling to find stability while living in a Single Room Occupancy program.

*Written by Michael Kennedy.*

**Running time:** approx. 45 minutes

## additional social issues



### CARRY YOUR HEART

This production opens dialogue about depression and suicidality by presenting the stories of people who have attempted suicide and of those who have lost loved ones to death by suicide.

*Written by Michael Kennedy, based on interviews with survivors of suicide.*

**Running time:** approx. 45 minutes



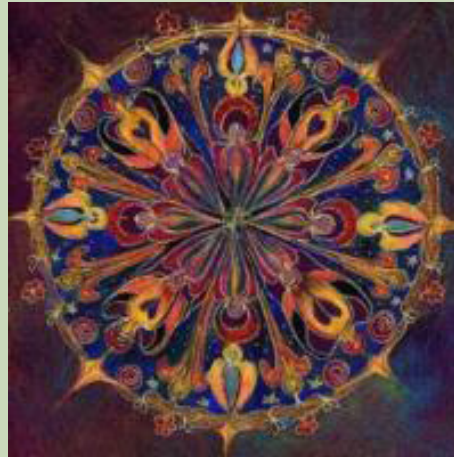
### TAKEN IN

This production raises awareness about the sex trafficking of minors occurring in every community.

*Written by Michael Kennedy, based on interviews with law enforcement, child welfare workers, activists and formerly trafficked women.*

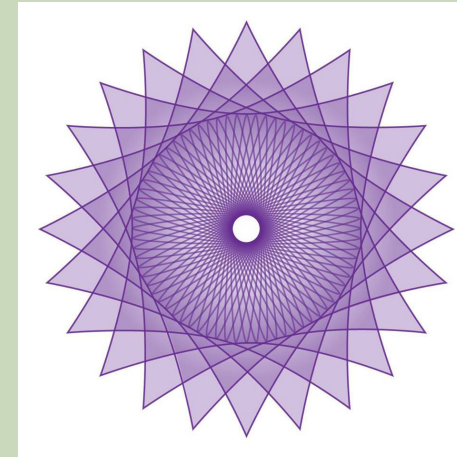
**Running time:** approx. 45 minutes

## additional services



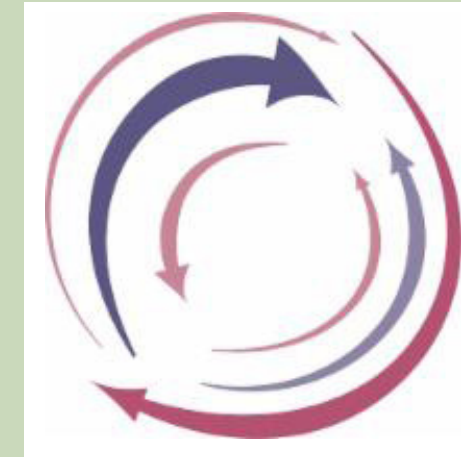
### CREATIVE GROUP WORK

Guided group explorations by a skilled, intuitive facilitator to deepen understanding, empathy and personal commitment to action about the social issue being explored.



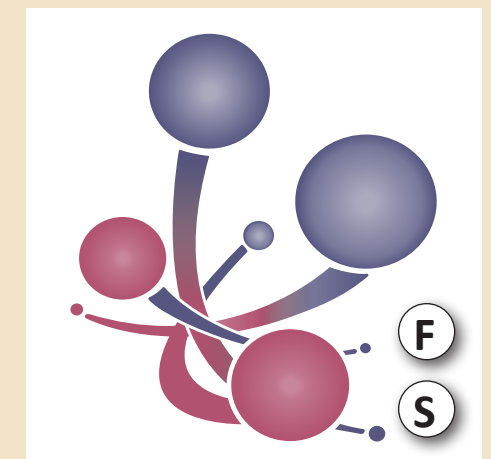
### PLAYBACK THEATER

Improvisational theater based on personal moments and stories told by audience members, which are then immediately played back as theater.



### TALK BACK

An opportunity for audience members to ask questions to the artists involved in creating the project.



### COMMISSIONED PRODUCTION

Creation of an original live performance or film specifically at the request of an organizational partner, about any compelling social issue that aligns with Creative Action Unlimited's mission.

**(F)** = FILM PRODUCTION **(S)** = STAGE PRODUCTION *Creative Action Unlimited is committed to diverse casting in its productions. Additional services available as package add-ons or stand-alones. Production availability subject to change. Price list available upon request. For more information, visit [creativeactionunlimited.com](http://creativeactionunlimited.com) or email [msmichaelkennedy@gmail.com](mailto:msmichaelkennedy@gmail.com).*

**CREATIVE ACTION  
UNLIMITED**