

# Honeybee Meadows

## Construction Design Guide

Adopted by Honeybee Architectural Committee 8/3/2022

### Contents

Exterior Look .....	2
Landscaping .....	4
Material Colors and Earth Tones.....	5
Roof Slope and Overhang .....	7
Setbacks.....	8
Driveways.....	9
Fences .....	10
Covers for Fuel Tanks .....	11

## Exterior Look

Buildings should be constructed in character with neighboring buildings or structures. A combination of gables, porches, decks and decorative architectural features should be incorporated into the exterior design to avoid a home having a “boxy” appearance.

Below are example homes that would meet the criteria of a “non-boxy” home. Note that these examples also depict acceptable building colors and landscape styles.

Example 1 - This design incorporates a simple covered porch and box window.



Example 2 – Smaller footprint home that incorporates a covered porch and two gables.





Example 3 – This design offsets the garage from the main home and incorporates simple gables.



Example 4 – This design offsets the garage and incorporates a covered porch.



Example 5 – Small covered porch and offset garage.





Example 6 – Gable over garage that is also offset from home. Gable over porch.



Example 7 – Multiple gables & offset garage.



### Landscaping

Areas of Lots not used for structures or drive-way need to be landscaped with lawns, trees, flowers, ground cover, decorative walkways, planters, etc. (Acceptable landscape examples are shown in “Exterior Look” section above). Xeriscape landscape designs may be used but must be approved by architectural committee. For xeriscape designs, please submit a complete site plan that includes plant specifications as well as landscape materials, colors, etc. Below are some acceptable examples:



## Material Colors and Earth Tones

Buildings need to be designed with earth tone colors and be painted, faced and roofed with colors that blend into the natural environment and landscape of the area. Lot owner's color selections are to be approved by the architectural committee.

Generally speaking, earth tones refers to "neutral colors," which are muted and flat in an imitation of natural colors. A neutral color is typically created by mixing primary or complementary color with white, black, or gray.

Below are some examples of earth tone colors:

Forest Floor #555142	Forest Night #434237	Brown Grey #8d8468	Charcoal Grey #6e6969
Dirt Brown #836539	Desert Yellow #a29259	Charred Clay #885132	Bistre #3d2b1f
Dusty Yellow #d4cc9a	Straw Yellow #f0d696	Wood Bark #302621	Earth Brown #4f1507
Musk Dusk #cfbf9	Prairie Dusk #cec5ad	Auburn #712f2c	Bear Brown #44382b

Brown Tumbleweed #37290e	Evergreen Forest #0e695f	Cedar #5e6737	Drab Green #749551
Forest #0b5509	Forest Biome #184a45	Seagrass #67ad83	Moss Garden #99bb33
Kelp Forest #448811	Forest Night #002200	Moss Green #638b27	Watercress #6e9377
Pine Green #0a481e	Alpine Green #005f56	White Sulfur #f1faea	Blue Lagoon #00626f

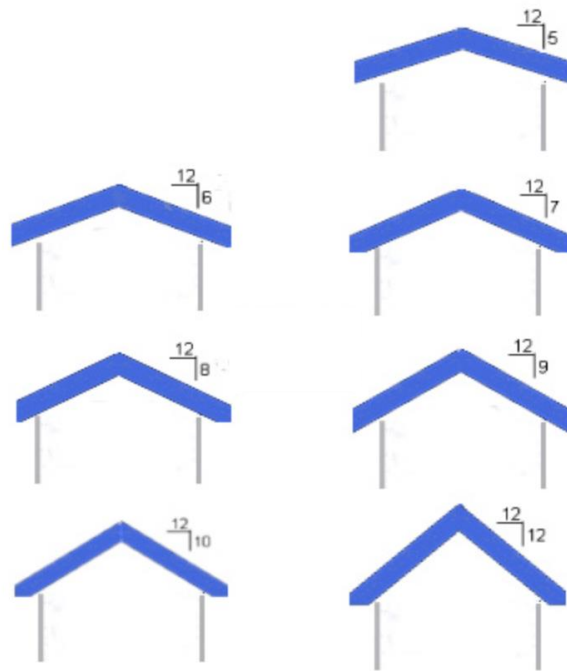
Irish Clover #53734c	Peaslake #8caa95	White Smoke #f5f5f5	Canadian Lake #8f9aa4
Turtle Lake #73b7a5	Rolling Sea #5a6d77	Dusk #4e5481	Waterway #7eb7bf
Cod Grey #2d3032	Dover Grey #848585	Waterfall #3ab0a2	Blue Opal #0f3b57
Glacier Grey #c5c6c7	Grey Wolf #9ca0a6	Blue Paisley #2282a8	Mountain Lake #2d5975

Meltwater #79c0cc	Jasmine Flower #f4e8e1	Brown Red #922b05	Burled Redwood #8f4c3a
Wallflower #a0848a	Arctic Dusk #735b6a	Charred Brown #3e0007	Chestnut Brown #6d1008
Blue Potato #64617b	English Violet #563d5d	Wildflower Honey #c69c5d	Brown Orange #b96902
Vintage Violet #634f62	Beet Red #7a1f3d	Burnt Orange #cc5500	Dirty Orange #c87606

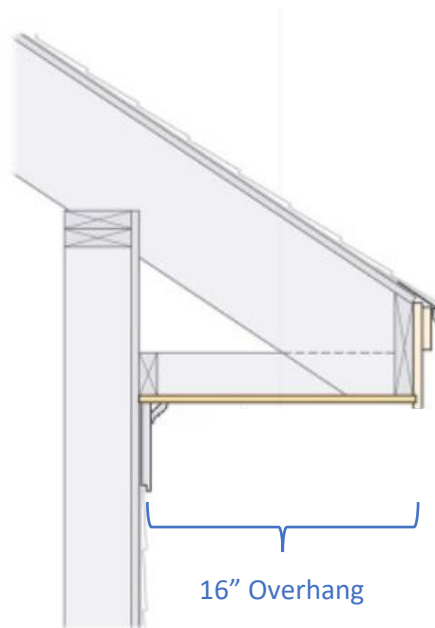
Rust #a83c09	Faded Orange #f0944d
Orange Lily #be7249	Ocher #bf9b0c
Aspen Yellow #f6df9f	Bad Moon #f2e5b4
Swedish Yellow #fce081	Wax Yellow #ede9ad

## Roof Slope and Overhang

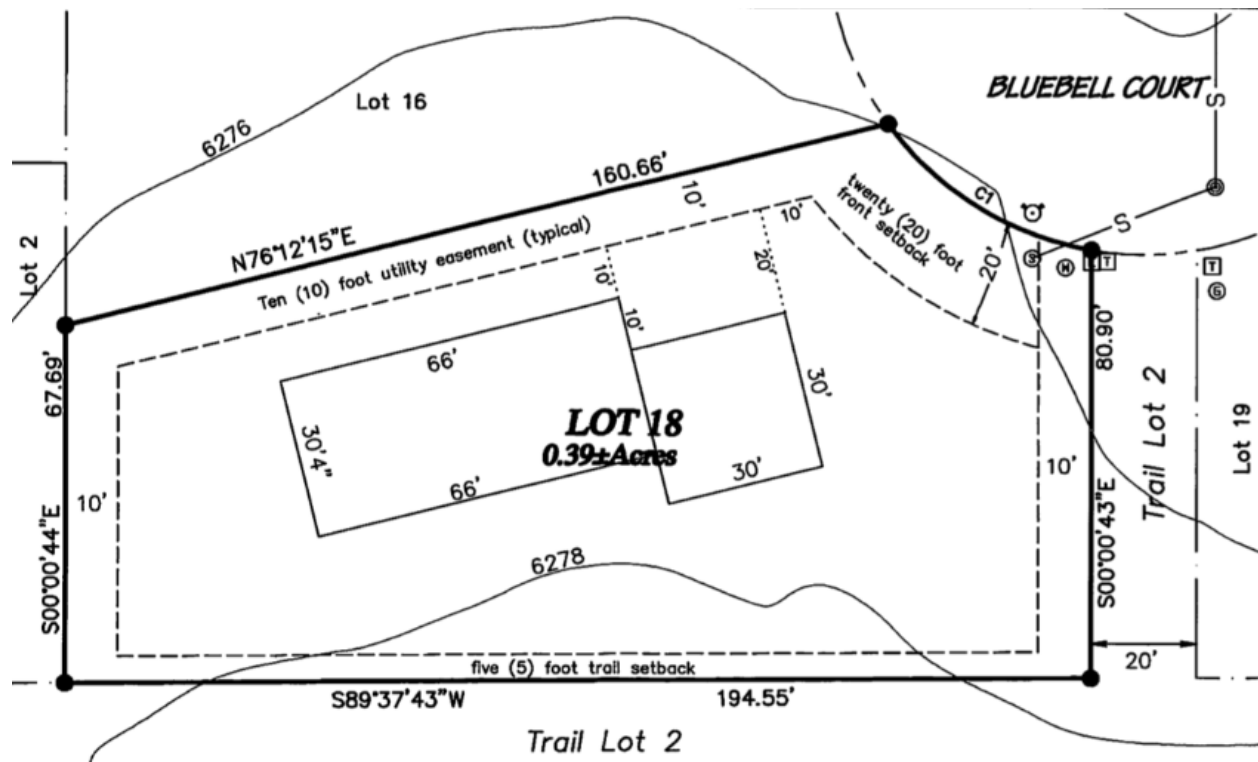
Building roof shall have a minimum pitch of five feet in twelve feet:



Roof eaves shall have a minimum overhang of sixteen (16) inches:



Setbacks shall be in accordance with those listed on recorded Honeybee Meadows Subdivisions Plats and approved by the Town of Afton. Below is an example site plan that meets setback requirements:





## Driveways

Driveways shall consist of asphalt, concrete (recommended) or well-maintained gravel.



## Fences

Fences should not include barb wire, woven field wire, chain link, etc. Below are examples of approved fencing styles:





### **Covers for Fuel Tanks**

Fuel tanks, water tanks or similar storage facilities must be designed to be an integral part of a structure or must be installed underground.

Below are some example enclosures for propane fuel tanks:

