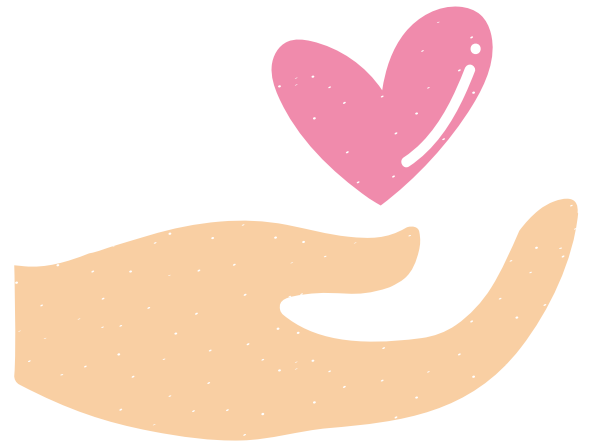


**With
Jennifer
James**

Clinical Compass(ion): Navigating Obesity Management

Duration: 1 day
CPD Hours: 8
Date: 23rd November 2024
Format: Face to Face
Fee: £225



Jennifer James PhD, MRes, BSc (Hons), MCSP,
AFLTHE

Overview:

This course will provide an overview of obesity; its aetiology and pathology, and current management including non-surgical, pharmacological and surgical options. There will be a focus on behaviour change and how clinicians can use theory and evidence to support patients in this. Jennifer will share her knowledge from her work as clinical specialist in obesity management services, and from her research in behaviour change interventions in the field of obesity.

The course is designed to be interactive and thought provoking and will support delegates in increasing their knowledge and skills so that they feel more confident when working with people with obesity. This course is appropriate for any healthcare professional, whose patient caseload comprises patients with obesity either as a primary or associated condition. It will be particularly relevant to clinicians working in musculoskeletal contexts. Delegates will leave the course with a sound understanding of contemporary behaviour change theories and models, and transferable skills that they can apply to their own areas of practice.

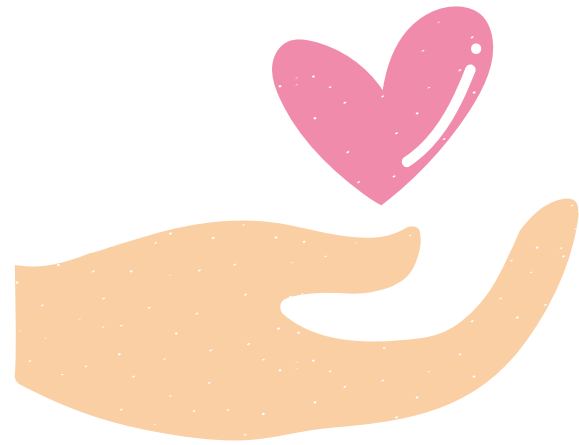
**Visit our Website
to Book!**



Training made easy

**With
Jennifer
James**

Clinical Compass(ion): Navigating Obesity Management



Who will Benefit?

This course will benefit any health care professional who wants to know more about obesity, and how to confidently and competently support their patients to change their behaviour(s). It will be particularly helpful for clinicians working in musculoskeletal contexts.

Key Learning Outcomes:

- To increase knowledge of the aetiology of obesity – why it's not as simple as eat less, move more.
- To increase knowledge of the pathology of obesity and associated conditions.
- To understand the current management of obesity including emerging pharmacological treatments.
- To increase delegates knowledge and skills in supporting patients with obesity and targeted behaviour change.

trainingmadeeasy.org



Training made easy

With
Jennifer
James

Clinical Compass(ion): Navigating Obesity Management



Course Content

The course is split into two parts.

The first looks at the aetiology of obesity, directly challenging the popular discourse of 'eat less, move more'. In this section, Jennifer will review the evidence for the obesogenic environment, and how those with a susceptibility to it are likely to find it more difficult to maintain a 'normal' weight or BMI. Here pathology of obesity and its associated conditions will be considered, as will the current management strategies.

The second part of the course will focus on the practical management of obesity, with a particular emphasis on how one could support a patient to change a target behaviour. This will be firmly linked with the theory and evidence base, and related back to the content from the first part of the course. This will allow delegates to link behaviour change theory with current practice so that delegates can identify the proposed mechanism of action for these different interventions. Delegates will then be able to use this knowledge, to critique approaches in their own areas of practice.

Programme

9am	Registration
9.10 – 12 noon	Aetiology of obesity – why it's not as simple as eat less, move more
	Pathology of obesity and how it's associated with other long-term conditions
	Short comfort break, 15 – 20 minutes.
	Current management of obesity (individual focus) within the NHS
12 noon – 12.30pm	Lunch
12.30pm	"Don't ask why" – conversations about weight.
	"Ready or able to change?" – what do the theories say?
	Using theory to identify what needs to change
	Short comfort break, 15 – 20 minutes.
	Operationalising our behaviour change intervention
	Bringing it all together.
4pm	Course close



Training made easy