

A'TOMIC™

NITINOL FIXATION SYSTEM



**ANATOMIC
CONTOURS**

**ASTONISHING
STRENGTH**



STOP
putting a
Square Peg
in a
Round Hole

RMA
ORTHO

Implants shown: Top: A'TOMIC™ 3.2 21x20mm, Left: A'TOMIC™ 3.2 25x20mm, Right: A'TOMIC™ 2.7 21x18mm.

A'TOMIC

NITINOL FIXATION SYSTEM

Strength Where it Counts.

Designed with a patent-pending combination of round legs and wide bridge to maximize implant strength, stiffness, and dynamic compression while minimizing strains that can compromise implant integrity.

Anatomic Contours.

Smooth edges and sloping shoulders to reduce the potential for removal due to soft tissue irritation.



Ergonomic Instruments.

3D-printed components designed for ease of use and precise implant placement.

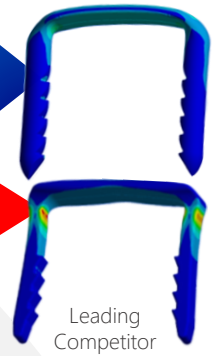
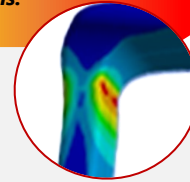


RMR Ortho, LLC
4600 Lockhill-Selma Rd,
Suite 107
San Antonio, TX 78249
Phone: (888) 476-7210
Email: customersupport@rmrortho.com
www.rmrortho.com

Copyright © 2024 by RMR Ortho, LLC. A'TOMIC™ is a trademark of RMR Ortho, LLC.
 Product and/or its use are covered by patents pending. For more information, contact your local RMR Ortho distributor or call our support staff at the number above.
 LBL-0701-06_Rev 2

A'TOMIC'S patent-pending round legs and wide bridge minimize strains.

Square legs are subjected to high strains.



Just Plain Beautiful.

No bevels, no sharp edges, and no "wings" needed to achieve near zero-height release.



SKU	DESCRIPTION
A'TOMIC 2.0	
07.20.1010.21A	A'TOMIC 2.0MM NITI IMPLANT KIT 10X10MM 2-LEG, STERILE
A'TOMIC 2.7	
07.27.1515.21A	A'TOMIC 2.7MM NITI IMPLANT KIT 15X15MM 2-LEG, STERILE
07.27.1818.21A	A'TOMIC 2.7MM NITI IMPLANT KIT 18X18MM 2-LEG, STERILE
07.27.2118.21A	A'TOMIC 2.7MM NITI IMPLANT KIT 21X18MM 2-LEG, STERILE
07.27.2518.41A	A'TOMIC 2.7MM NITI IMPLANT KIT 25X18MM 4-LEG, STERILE
A'TOMIC 3.2	
07.32.1820.21A	A'TOMIC 3.2MM NITI IMPLANT KIT 18X20MM 2-LEG, STERILE
07.32.2120.21A	A'TOMIC 3.2MM NITI IMPLANT KIT 21X20MM 2-LEG, STERILE
07.32.2520.41A	A'TOMIC 3.2MM NITI IMPLANT KIT 25X20MM 4-LEG, STERILE
OPTIONAL* ANCILLARY INSTRUMENTS	
07.20.QDS	A'TOMIC 2.0MM QUICK DISCONNECT DRILL, STERILE
07.27.QDS	A'TOMIC 2.7MM QUICK DISCONNECT DRILL, STERILE
07.32.QDS	A'TOMIC 3.2MM QUICK DISCONNECT DRILL, STERILE
07.27.SG1	A'TOMIC SIZING GUIDE, STERILE
07.27.RT1S	A'TOMIC REMOVAL TOOL, STERILE

* Facilities may use their own equivalent drill bits. See Instructions for Use for more information.