

MISS HONEY

But I didn't... Miss Trunchbull; Matilda Wormwood is a genius.

TRUNCHBULL

Nonsense!

stop close - be brave

MISS HONEY

Headmistress, it is my opinion that this little girl should be placed with the eleven-year-olds.

TRUNCHBULL

We cannot just "place her in with the eleven-year-olds!" What kind of society would that be? What about rules, Honey, rules?

MISS HONEY

I believe that Matilda Wormwood is an exception to the rules.

TRUNCHBULL

An exception? *beat*

(#10 - THE HAMMER begins.)

Start

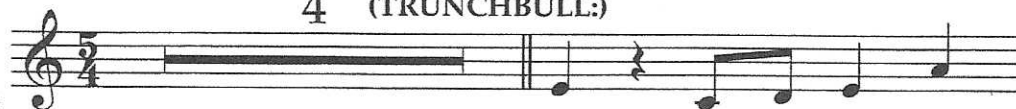
THE HAMMER

(TRUNCHBULL:) To the rules? In my school?

Quirky, not too fast

4

(TRUNCHBULL:)



Look at these tro - phies,



See how my tro - phies gleam in the sun - light?



See how they shine? What do you think it

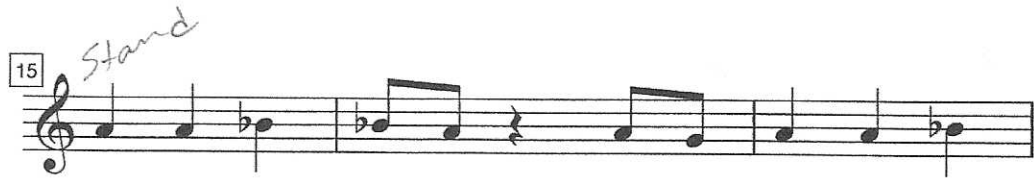




took to be-come Eng - lish Ham-mer Throw-ing



Champ-ion Nine - teen - six - ty - nine? Do you

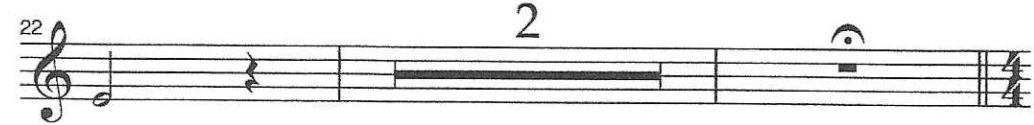


think in that mo-ment when my big mo - ment



came That I treat-ed the rules with cas - ual dis -

To her face
(TRUNCHBULL:) No, no, no, no, no!



dain?

Holding trophy close **Simply** *what acting choices can you simply make her.*
breathing heavy.
(TRUNCHBULL:)



If you want to throw the ham-mer for your count - ry





You have to stay in-side the cir - cle all the



time. If you want to make the team you don't need



hap-pi-ness or self-es - teem, You just need to keep your

END

(TRUNCBULL:) Sing, children!

*on intercom
OR IN Choir formation*



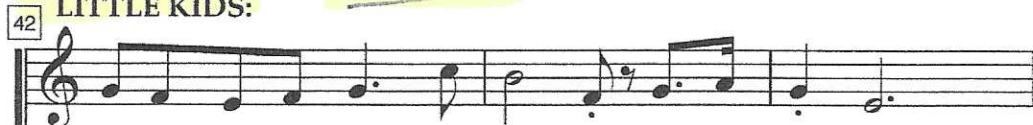
feet in-side the line.

2! 3! 4!

*IN a
Choir formation*

**TRUNCBULL,
LITTLE KIDS:**

littles



If you want to throw the ham - mer for your count-ry

BIG KIDS:



If you want to throw the ham - mer, Bam - bi-na-tum

