



IMS Map360

IMS Map360 Software Installation & User Tips

Download link for IMS Map360: <http://ims.leica-geosystems.com/download>

Both 32 and 64 bit versions are available. Select correct version for your computer then choose to SAVE download file. (Most will use 64 bit but if you are not sure go to your Windows Start button > Computer. Then right-click on "Computer" displayed on left side, select Properties from the pop down. The System Type will be displayed.)

Download completely and once download is completed double-click file to begin installation. (Note: for an agency owned computer you may need to contact your IT Section in case you do not have admin rights to get their assistance to install software.) If you had MapScenes installed it will still be available.

IMS (Incident Mapping Suite) Map360 first installs in **30-day demo mode** which can be licensed with your purchased USB License Key. The key is activated using a special program called the USB License Manager. The License Manager contacts a server at our corporate office. Depending on the firewall configuration used in your organization, **you might need to grant special permission to the License Manager software to access MicroSurvey.com through TCP Port 80**. Alternatively, you can activate the key from a less restricted computer.

If you get an error message, *"Unable to retrieve product information, please contact Technical Support."*, this usually indicates a firewall issue. Please consult with your Network Administrator, or refer to your firewall documentation on how to setup exceptions. If License Manager can't get through the firewall, you will not be able to activate, or update your USB License Key.

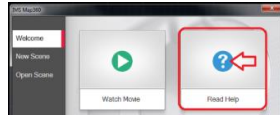
1. Once the installation finishes, insert your **USB Software License Key** in any available **USB port** on your computer. *Confirm that the tiny red led on the key has lit (light on newer USB keys only.)*
2. Go to **Start | Programs | IMS Map360** and start **"USB License Manager."**
3. On the Software License USB Key Maintenance Program, Press the **Update Key with New Information** Button and you will get a message indicating that the key was updated. You now have a license stored on your key. Exit the License Manager.
4. Start **IMS Map360** by using the shortcut on your desktop, or from the **Start | Programs | IMS Map360** folder.

Note: **ONLY** for customers that have also purchased the **optional Point Cloud Extension Module**.
(for point cloud data generated from 3D scanners or photogrammetry including UAV/UAS point clouds)

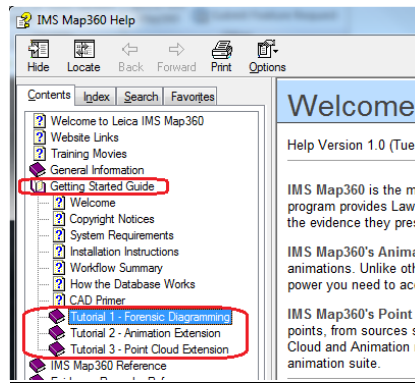
The **IMS Point Cloud module** operates on the powerful Leica **Cyclone** platform. You need either a licenced copy of the Leica Cyclone 9.1 (or newer) on your computer. If there is no Cyclone license installed on your computer, you can use the **free Cyclone Viewer**. See the Viewer installation instructions: [PDF Cyclone Viewer 64 bit document](#).
(There is a 32 bit version also available: [Cyclone Viewer Only for 32 bit machines](#))

TRAINING RESOURCES:

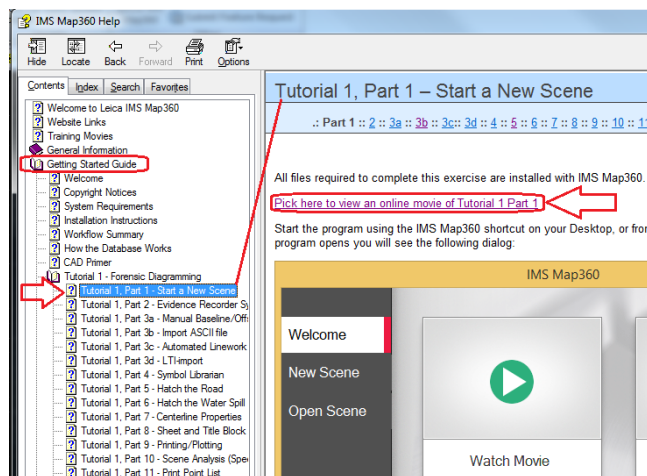
- 1.) **IMS Map360 Training Movies** page: [Link to Training Movies](#)
- 2.) **Knowledgebase IMS Map360:** [Support Section Resources and General info](#)
- 3.) **IMS Version Release History with links:** [Version Release History and download links for IMS Map360](#)
- 4.) User **Help** for IMS Map360 is accessed from opening dialog or under **HELP** tab:



- 5.) **Tutorials** are located under the **Getting Started Guide** folder as shown below:

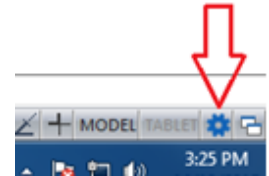


- 6.) Many Tutorial help sections provide a link for an **Online Tutorial Movie** that corresponds to that function as shown in screen shot example below:



- 7.) Access millions of 2D/3D symbols with the new **Collada Importer** tool, refer to: [Sketchup 3D Warehouse for Map360 Symbols Instructions](#)

8.) The IMS Map360 program offers a choice of **three** working environments: **Sketch Mode (basic), Advanced Mode or MapScenes Legacy modes**



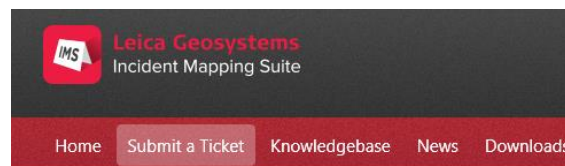
With open drawing switch modes using the blue gear/cog button (bottom right):

Visit IMS Map360 web page: <http://ims.leica-geosystems.com/>

Leica Public Safety web page: <http://psg.leica-geosystems.us/page/software-solutions/>

Technical Support Questions?

IMS has a support website dedicated to forensic users, visit ims.microsurvey.com to review available articles, movies, tutorials, download links and button to “**Submit a Ticket**” for tech support.



The first time you use this it will prompt you to set up an account to be registered. Once you do that you can either contact support by email at: IMS@MicroSurvey.com or use same link to Submit Ticket for future requests. For time sensitive issues call us toll free at: **1-888-632-8285** Pacific Time. (International: 001-250-707-0000)

Leica IMS Map360 (Incident Mapping Suite) is developed by **MicroSurvey Software** partnered with **Leica Geosystems**.
IMS Map360 is an upgrade from **MapScenes Forensic CAD**