



**Installation Manual
Post-Processing Software**

MAGNET Collage

INTRODUCTION

Thank you for purchasing our product.

- Before using the product, please read this instruction manual carefully to always handle and operate the product properly and correctly.
- We continuously conduct research and development to provide an easy-to-use, improved product. Please be forewarned that the specifications, etc. of the product are subject to change for improvement without notice.
- Please be forewarned that the contents of this manual are subject to change without notice.
- The illustrations in this manual may somewhat differ from the actual product for the sake of explanation. Please be forewarned.
- Please note that we are not responsible for any profit or loss arising from the use of this software.
- No part of this manual may be copied or reproduced without the prior consent of us. (Except for exceptions under the Copyright Act)

Symbols

This manual uses the following symbols in explanations:

- ⓘ : Indicates a precaution for use or an important note to read before work.
- a : Indicates a relevant chapter (section) or a chapter (section) to reference.
- B : Indicates supplemental information.
- [OK] etc. : Indicates operation icons on the display and window dialog buttons.
- {Shift} etc. : Indicates keys on the keyboard.
- <File Dialog>, etc. : Indicates the title of a view, window or dialog box.

Copyright of the software

- This software is copyrighted by Topcon. Please note that the specifications of this software are subject to change without notice.

Registered trademarks

- Mercury-Evoluto MMS Edition is a product name of Fukui Computer Corporation.
- Windows is a registered trademark of Microsoft Corporation.
- AutoCAD, DWG and DXF are trademarks or registered trademarks of Autodesk, Inc.
- Other company and product names in this manual are trademarks or registered trademarks of respective companies.

Exporting this product (Relating EAR)

- This product is equipped with the parts/units, and contains software/technology, which are subject to the EAR (Export Administration Regulations). Depending on countries you wish to export or bring the product to, a US export license may be required. In such a case, it is your responsibility to obtain the license. The countries requiring the license as of May 2013 are shown below. Please consult the Export Administration Regulations as they are subject to change.

North Korea

Iran

Syria

Sudan

Cuba

URL for the EAR of the US: <http://www.bis.doc.gov/policiesandregulations/ear/index.htm>

Exceptions from responsibility

- The user of this product is expected to follow all operating instructions and make periodic checks (hardware only) of the product's performance.
- The manufacturer, or its representatives, assumes no responsibility for results of faulty or intentional usage or misuse including any direct, indirect, consequential damage, or loss of profits.
- The manufacturer, or its representatives, assumes no responsibility for consequential damage, or loss of profits due to any natural disaster, (earthquake, storms, floods etc.), fire, accident, or an act of a third party and/or usage under unusual conditions.
- The manufacturer, or its representatives, assumes no responsibility for any damage (change of data, loss of data, loss of profits, an interruption of business etc.) caused by use of the product or an unusable product.
- The manufacturer, or its representatives, assumes no responsibility for any damage, and loss of profits caused by usage different to that explained in the operator's manual.
- The manufacturer, or its representatives, assumes no responsibility for damage caused by incorrect operation, or action resulting from connecting to other products.

CONTENTS

1. PREPARATION	1
1.1 Operating Environment	1
1.2 Computer Settings	1
■ Graphics Card Settings	1
1.3 Account Name of Personal Computer and Data Path	3
1.4 Product Activation	3
1.5 Download Setup File	4
2. INSTALLATION	5
3. ACTIVATION	7
3.1 Activate Product Kit	8
3.2 Activate Trajectory Utility	9

1. PREPARATION

1.1 Operating Environment

Please make sure your PC meets the requirements for MAGNET Collage.

Configuration	Requirement
OS	Windows 7 64-bit, Windows 8 64-bit or Windows 10 64-bit
CPU	Intel Core i7 (4 cores, 8 threads) or greater
RAM	DDR3 8GB or greater
Storage	MMS module : SSD 160GB or greater recommended Scan module : SSD 20GB or greater recommended
Screen Configuration	32-bit color, 1280x1024 pixels or more
Graphics Card	NVIDIA discrete GPU, VRAM 512 MB or greater
Network	Network environment that can be connected to internet

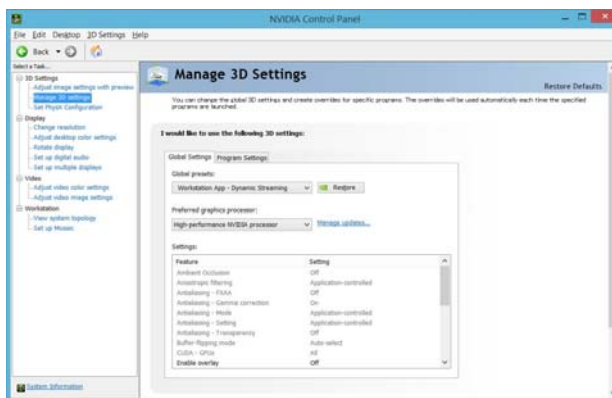
1.2 Computer Settings

Please configure your computer settings for MAGNET Collage.

■ Graphics Card Settings

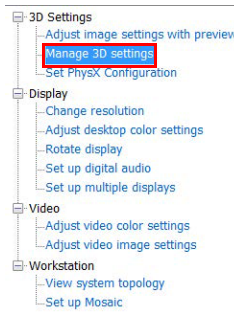
If your computer allows you to select a preferred graphics processor, ensure that a high performance NVIDIA processor is always used.

1. Right-click on the computer desktop and select "NVIDIA Control Panel".
<NVIDIA Control Panel> appears.

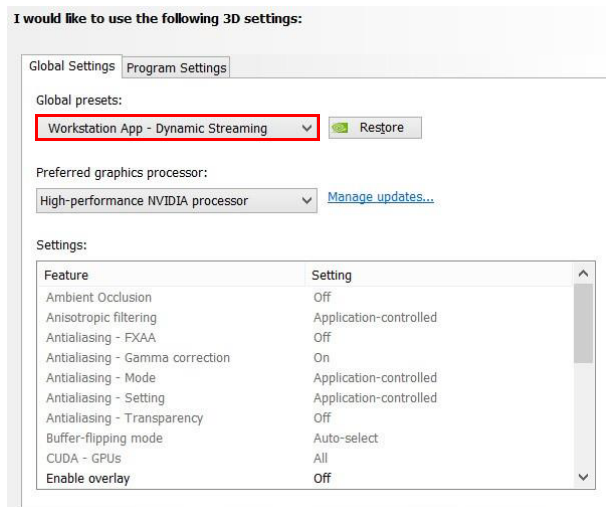


NVIDIA Control Panel

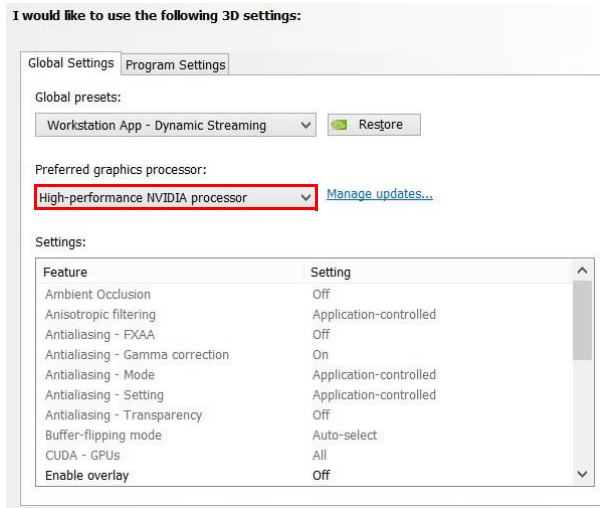
- Click "Manage 3D settings" from the task menu in the left hand of the screen.



- If your computer allows you to select a "Global Presets" in the right hand of the screen, ensure that "Workstation App-Dynamic Streaming" is selected.



4. If your computer allows you to select a "Preferred graphics processor" in the right hand of the screen, ensure that "High-performance NVIDIA processor" is selected.



1.3 Account Name of Personal Computer and Data Path

With this software, the path of relevant data cannot include 2-byte characters (Kanji / Chinese / Hangeul, etc.). Store the run data folder, base station observation data, geoid file, and output data folder at the place where a 2-byte character is not included with the path. The account name of the computer should not include 2-byte characters.

1.4 Product Activation

MAGNET Collage needs to be activated to perform data processing.

1) TOPCON account

We recommended you to use one company account to manage each MAGNET software. If you don't have the company account yet, you can create it on the MAGNET Enterprise web site at www.magnet-enterprise.com.

2) Serial Number for each product kit

Each product kit needs each serial number.

3) Access code for trajectory utility

Access code for trajectory utility is needed to process MMS trajectory.

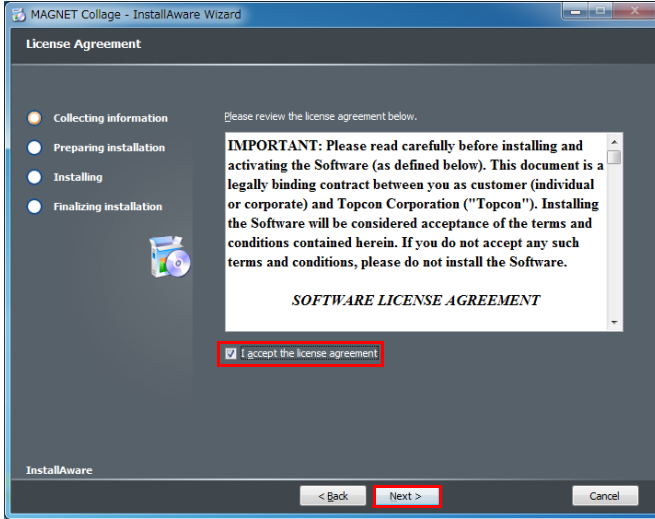
1.5 Download Setup File

1. Go to www.topconenterprise.com
2. Click [Log in to My Topcon].
3. Sign in with your Topcon Enterprise Solutions account.
4. Select [myTopcon] from the list of options and click [Get To Work!]
5. Search or browse the list of products to locate the MAGNET Collage product page, and click [MAGNET Collage].
6. Click [Firmware and Software Updates] on the MAGNET Collage product page.
7. Click the [Download] button to download the latest version of the software from the list.

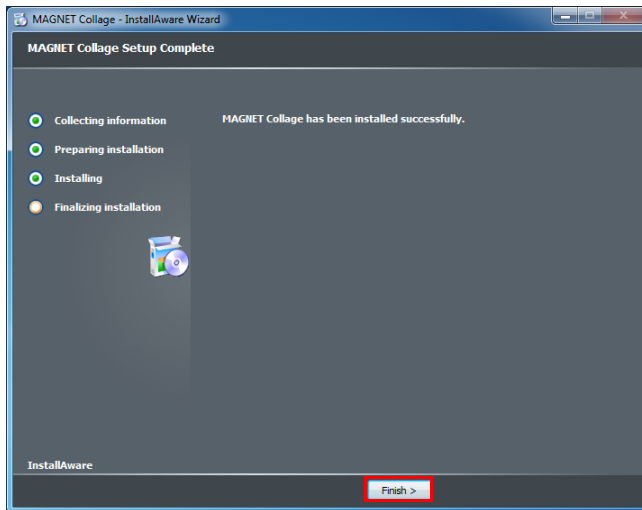
2. INSTALLATION

When you double-click the setup program icon, the installation will start.

1. Check on the license agreement and click [Next >] to start the installation.



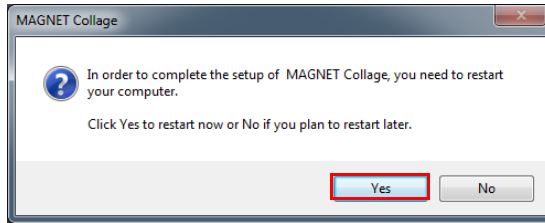
2. Finish the installation



Click [Finish] to complete the install process.

B

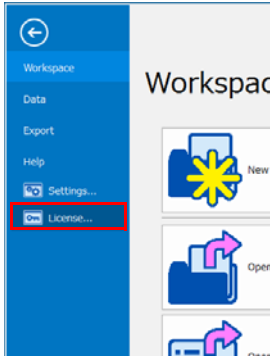
- If the following dialog is displayed, click [Yes] to restart the computer.



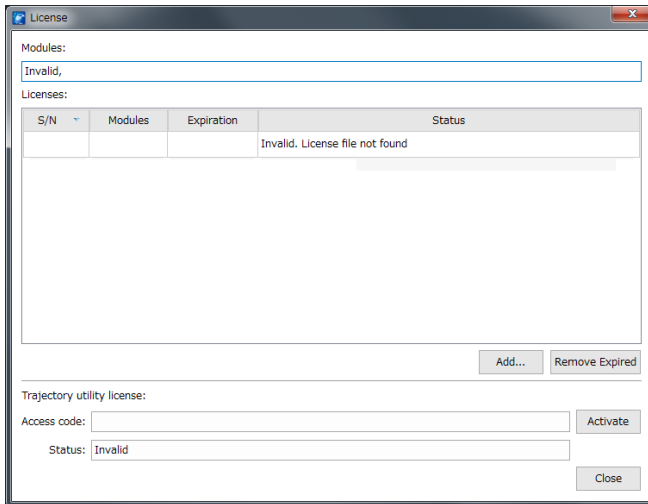
3. ACTIVATION

Start MAGNET Collage by double-clicking the desktop icon, then open <License Window> to activate the product.

1. Click [File] tab, and [License...] menu item.



<License Window> will appear.



- [Add...] : <Activate Product Window> will appear.
- [Remove Expired] : Expired licenses will be removed.
- [Activate] : Trajectory utility will be activated. If the utility has been already activated, it will deactivate the utility.

3.1 Activate Product Kit

1. Open <Activate Product Window> by clicking [Add].

Username : Input the username of TOPCON account.
 Password : Input the password of TOPCON account.
 Serial # : Input the serial number which is provided on the MAGNET
 Collage : Software Purchase Certificate.

2. Confirm that you can connect to the Internet and click [OK].

The license activation will start. It may take from several seconds to several tens of seconds.

After the activation finished, the license status will be displayed as follows.

S/N	Modules	Expiration	Status
5000021688	Maintenance	2017-08-17	Valid, Verified.
5000021688	Basic	2017-08-17	Valid, Verified.
5000021688	Scan	2017-08-17	Valid, Verified.
5000021688	MMS	2017-08-17	Valid, Verified.
5000021688	RD-M	2017-08-17	Valid, Verified.

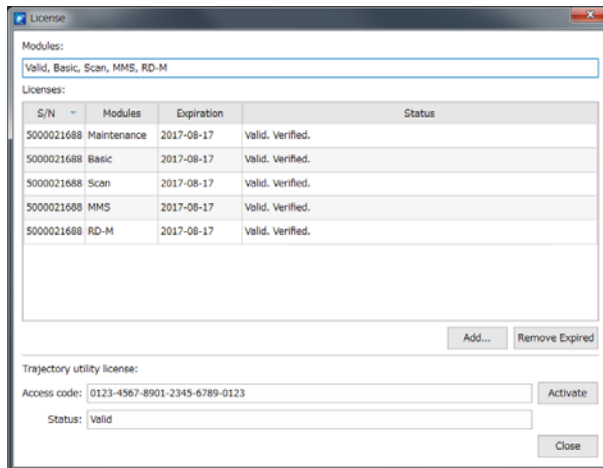
3.2 Activate Trajectory Utility

When you process a MMS trajectory, please activate the trajectory utility license by the following steps.

1. Please make sure the internet connection has been established.
2. Input the "Access code" of "Trajectory utility license", and press [Activate].

The access code is provided on the MAGNET Collage Software Purchase Certificate.

The activation may take from several seconds to several tens of seconds. After the activation finished, the license status will be displayed as follows.



e

- Lose trajectory utility license

There is a possibility of losing the trajectory utility license unexpectedly when you upgrade a PC or OS. Please be sure to deactivate the trajectory license prior to upgrade. If you lost the trajectory license other than clicking [Deactivate] button, you have to apply for a replacement access code by letter. Similarly, in the case of hardware failure, theft or loss of your PC.

TOPCON CORPORATION (Manufacturer)

75-1 Hasunuma-cho, Itabashi-ku, Tokyo 174-8580, Japan <http://www.topcon.co.jp>

Please see the attached address list or the following website for contact addresses.

GLOBAL GATEWAY <http://global.topcon.com/>
