

ELECTRONIC 12-CHANNEL COUNTER

CVC 1220CS (SERVO-DRIVEN FLAPS)



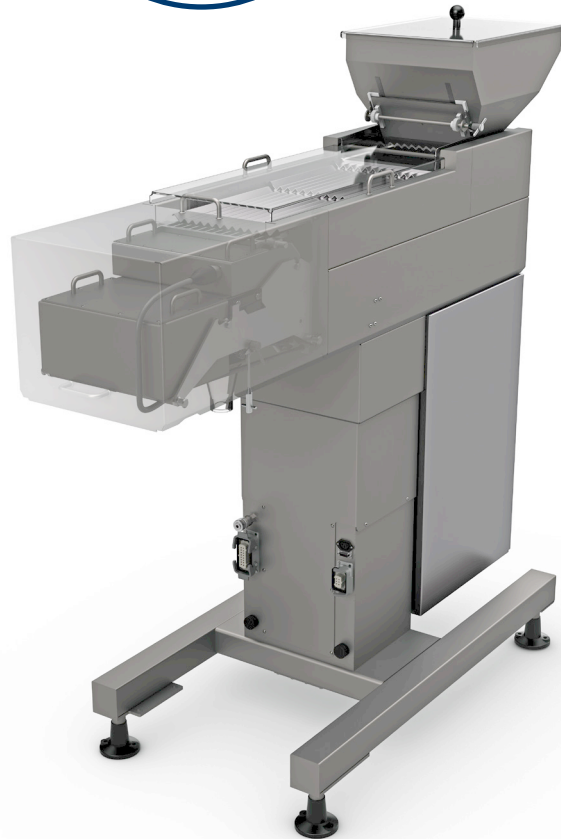
The CVC 1220CS is our newest Electronic Channel Counter designed for high speed, highly accurate counting of tablets, capsules, and soft gels. The system has been upgraded with servo-driven flaps to improve accuracy of pre-count functions. In addition, the servo system adds to longevity of the assembly and reduce the requirement to replace pneumatically driven actuators.

STANDARD FEATURES

- 12 V-shaped channels per head (tool less change over)
- Auto dust compensation and dual dust extraction ports
- Powered height adjustment and track-full/empty sensors
- 2.83M-motorized single lane sanitary conveyor (single head)
- 4.95M-motorized dual lane sanitary conveyor (dual head)
- Rejection System
- Memory capacity for up to 1000 jobs (*Requires Touch Screen controller)
- ISO 9001:2000 certified
- 21CFR Part 11 Compliant

FEATURE BENEFITS

- Independently controlled by servo motors
- Provide precise and absolute control
- High accuracy positioning and low-noise level
- Prolong life expectancy of drive unit
- Reduce the frequency for replacement



The machine comes standard with an automatic dust compensation system, dual vacuum ports, product count verification, and reject. The 1220CS can be setup to run one bottle using all 12 channels. Options include hopper level control with tower lamp, upside down bottle sensor, static eliminator bar, channel blocker, and floor loaded tablet pre-re-feeder.

CVC 1220CS Technical Specifications

Speed	Up to 55 Bottles per Minute (BPM) on a count of up to 100 products
Hopper Capacity	30 L
Bottle Height	1 1/2" to 7 3/4" (38mm - 197mm)
Bottle Diameter	3/4" - 4" (19 - 100mm)
Power Source	220V, 50/60 Hz, Single Phase
Power Consumption	4 Amp
Air Pressure	Minimum 87 psi (ISO 8573-1)
Air Consumption	7 cfm (200 L/sq. cm)
Machine Dimensions	D 9'-3" x 5'-9" x 5'-11" (2830mm x 1765mm x 1810mm) (L x W x H)

TECHNICAL SPECIFICATIONS

AVAILABLE OPTIONS

- Channel blocker
- Container upside down or fallen sensor
- Floor loaded pre-feeder with integrated controls
- Hopper level control system with tower lamp
- Industrial PC, Windows 10
- Static eliminator bar
- Dual counting heads are available
- Vision Inspection (OEM)



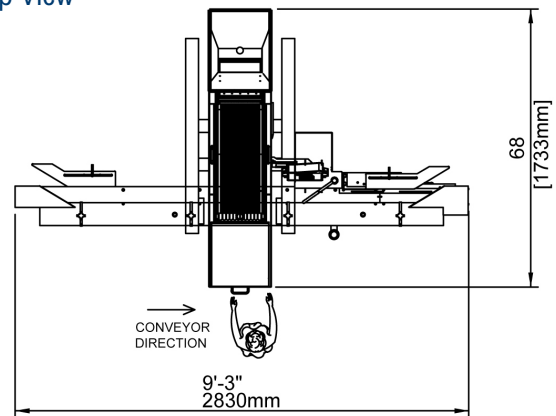
OPTIONAL: TABLET FEEDERS



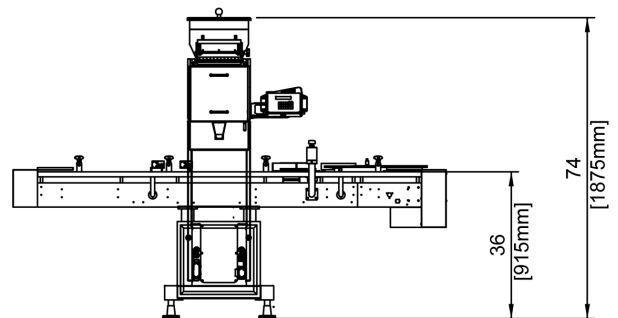
SERVO-DRIVEN FLAP ASSEMBLY

MACHINE LAYOUTS

Top View



Front View



The dimensions shown are for standard machine. The conveyor can be extended: the length may vary based on selected options. This machine can run independently or be integrated into an automated packaging line. All CVC equipment is covered by a one-year parts warranty. Full Warranty details are included in our equipment proposals or can be found on our website.



CVC Technologies, Inc.

10861 Business Drive, Fontana, CA 92337, USA
Phone: +1 (909) 355-0311 Fax: +1 (909) 355-0411
<http://www.cvctechnologies.com>
E-mail: sales@cvcusa.com

CVC USA East Coast Office

1855 New Highway, Suite C, Farmingdale NY 11735
E-mail: sales@cvcusa.com