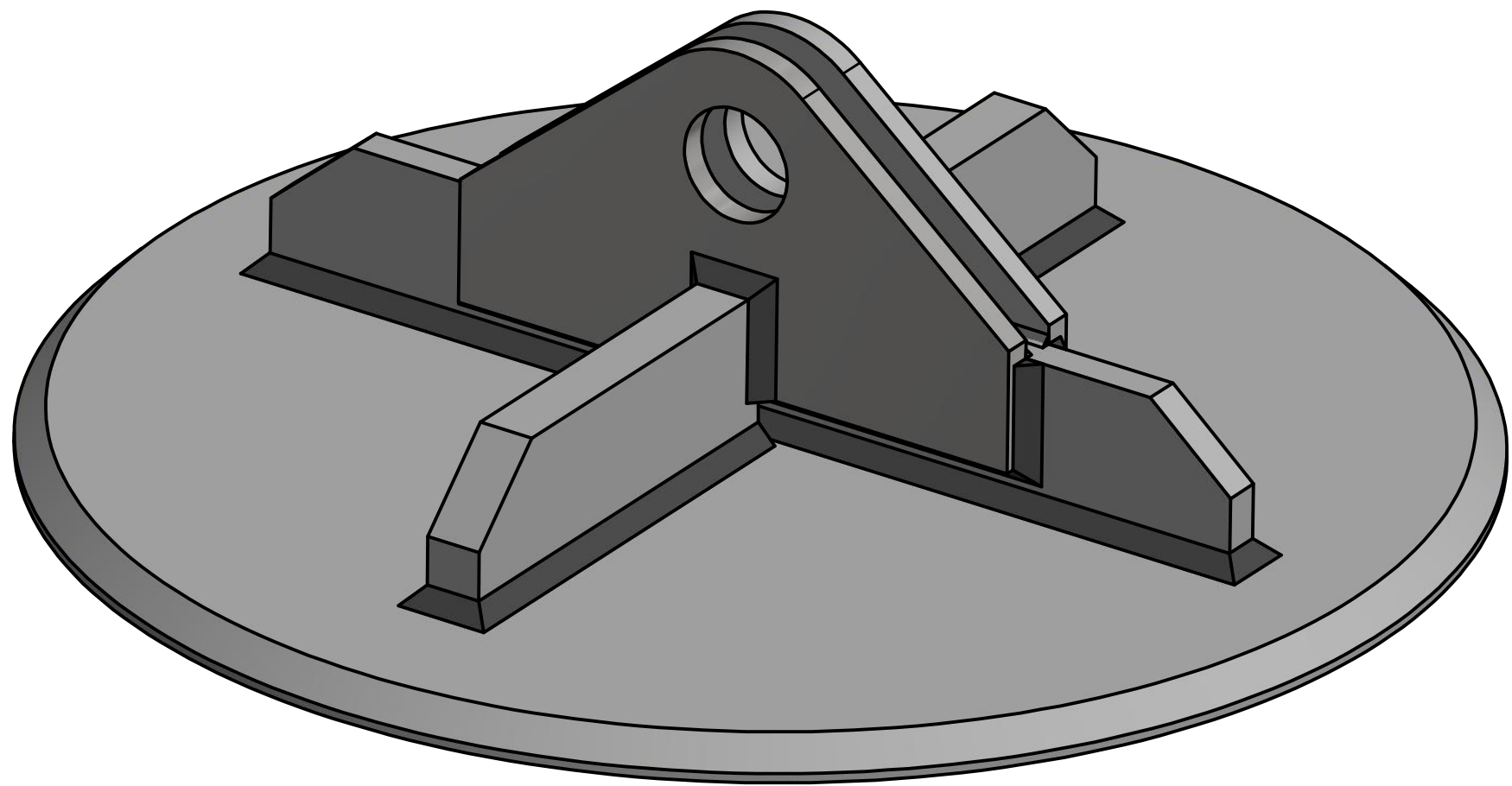
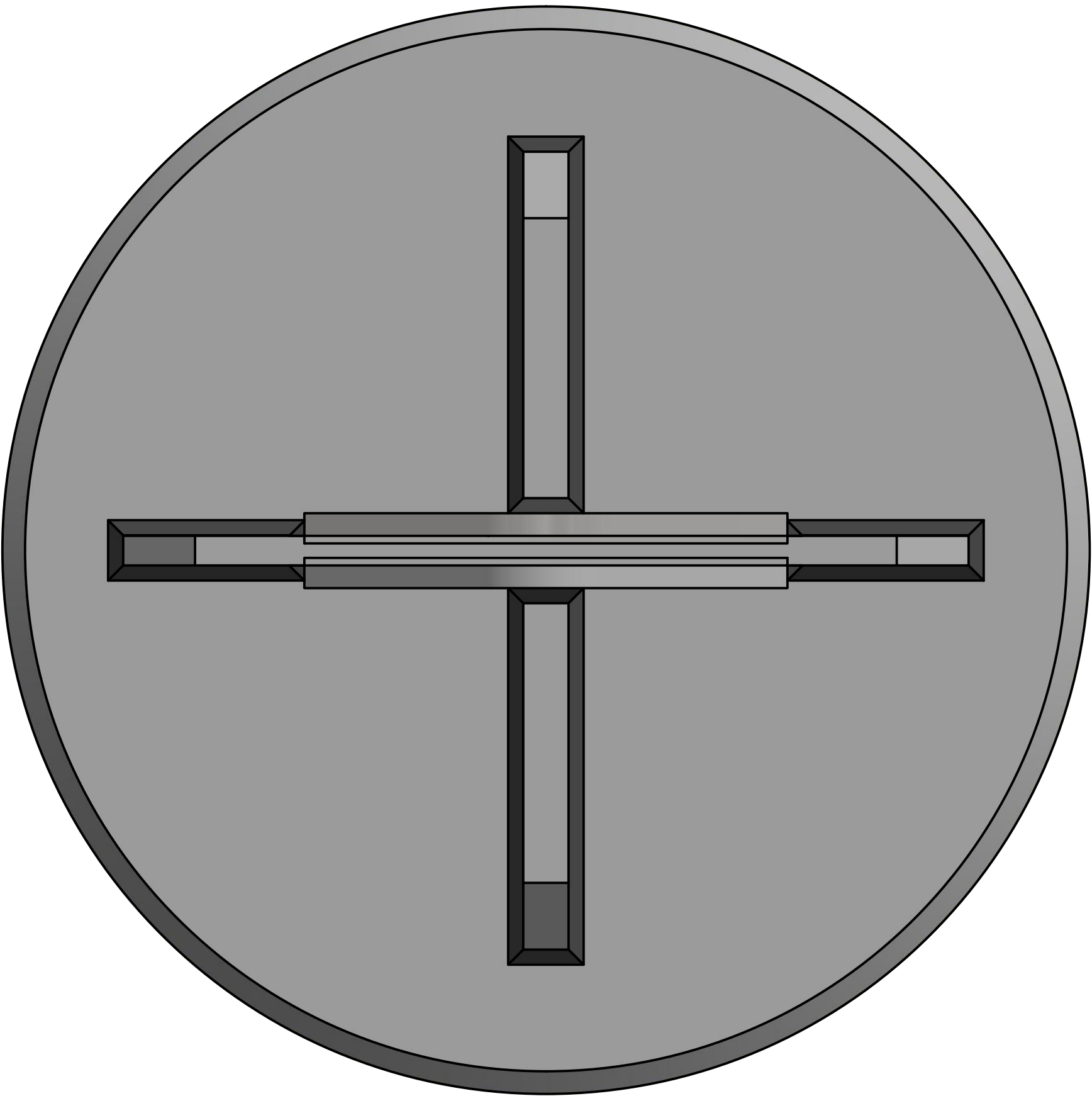


8 7 6 5 4 3 2 1

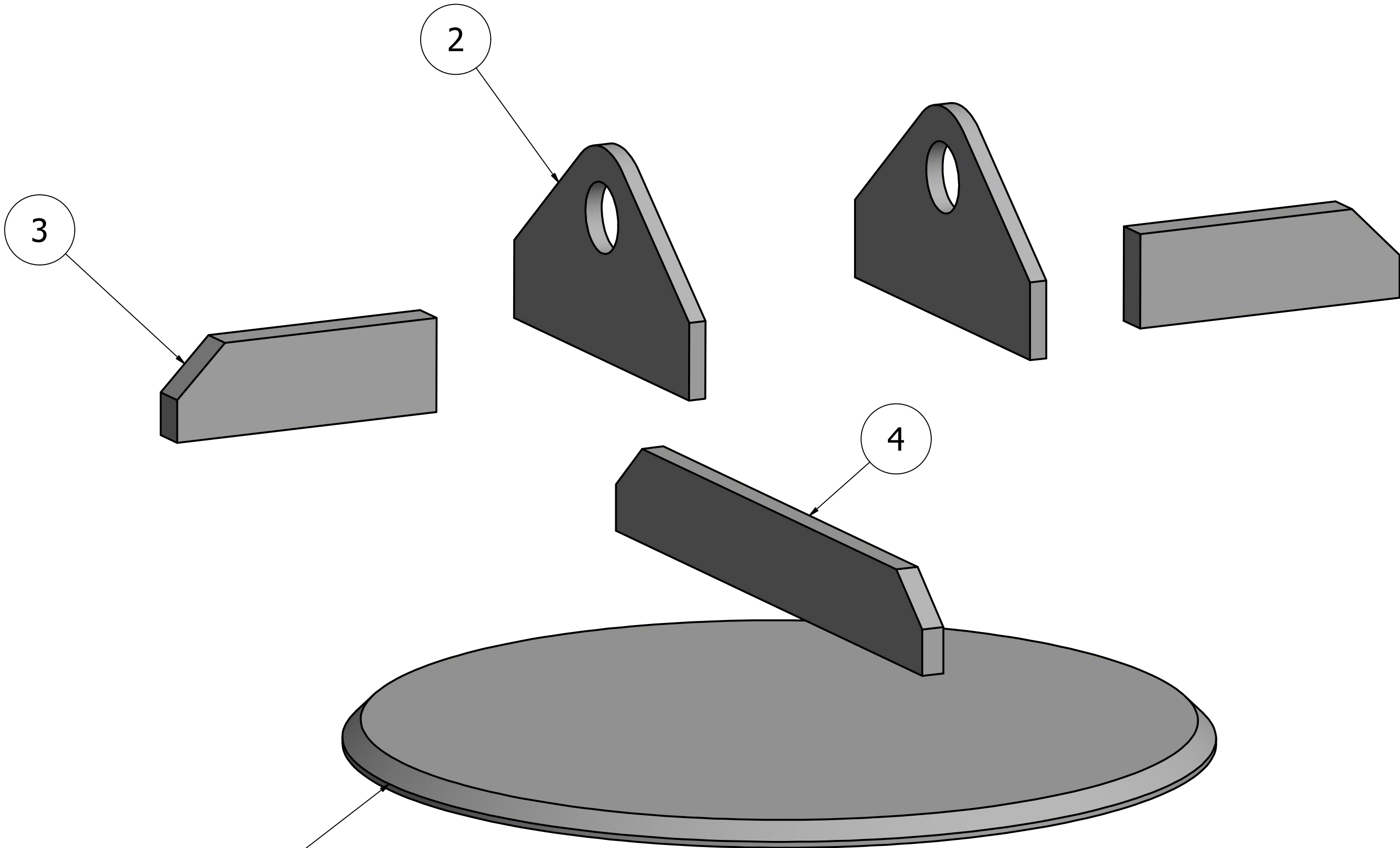


ISOMETRIC VIEW
SCALE 1 / 4

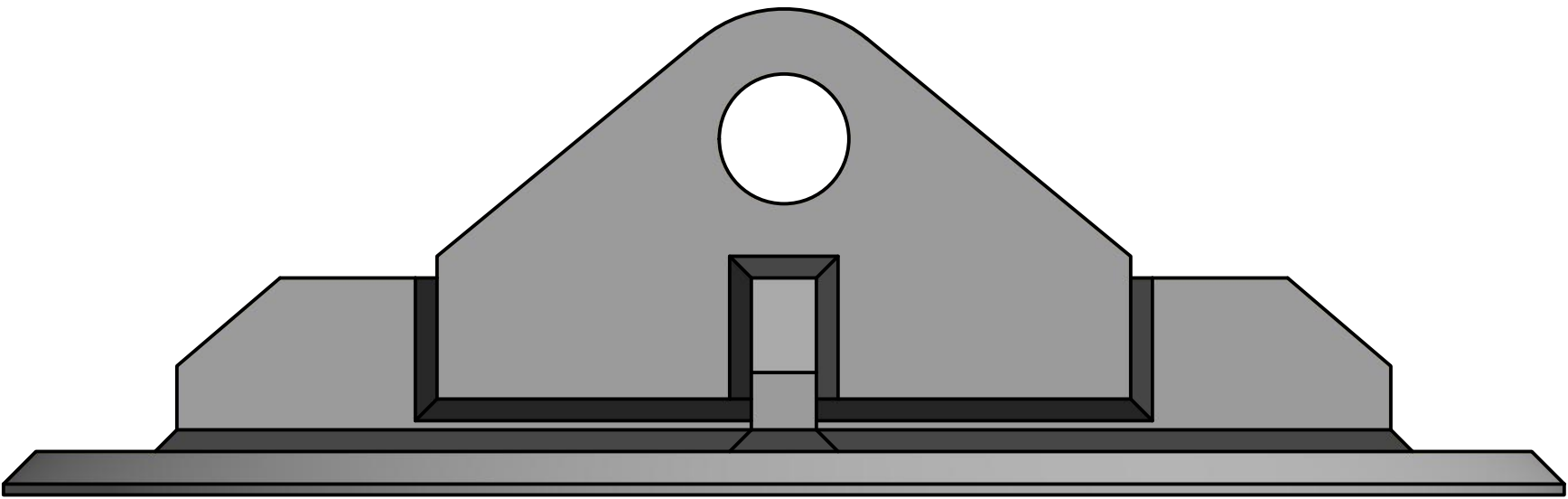
PARTS LIST			
ITEM	QTY	PART NUMBER	DESCRIPTION
1	1	Base Plate	Detail on Sheet 2
2	2	Bracket A	Detail on Sheet 3
3	2	Bracket B	Detail on Sheet 3
4	1	Bracket C	Detail on Sheet 3



TOP VIEW
SCALE 1 / 4



EXPLODED VIEW
SCALE 1 / 4



FRONT VIEW
SCALE 1 / 4

EXAMINED

Lloyd's Register

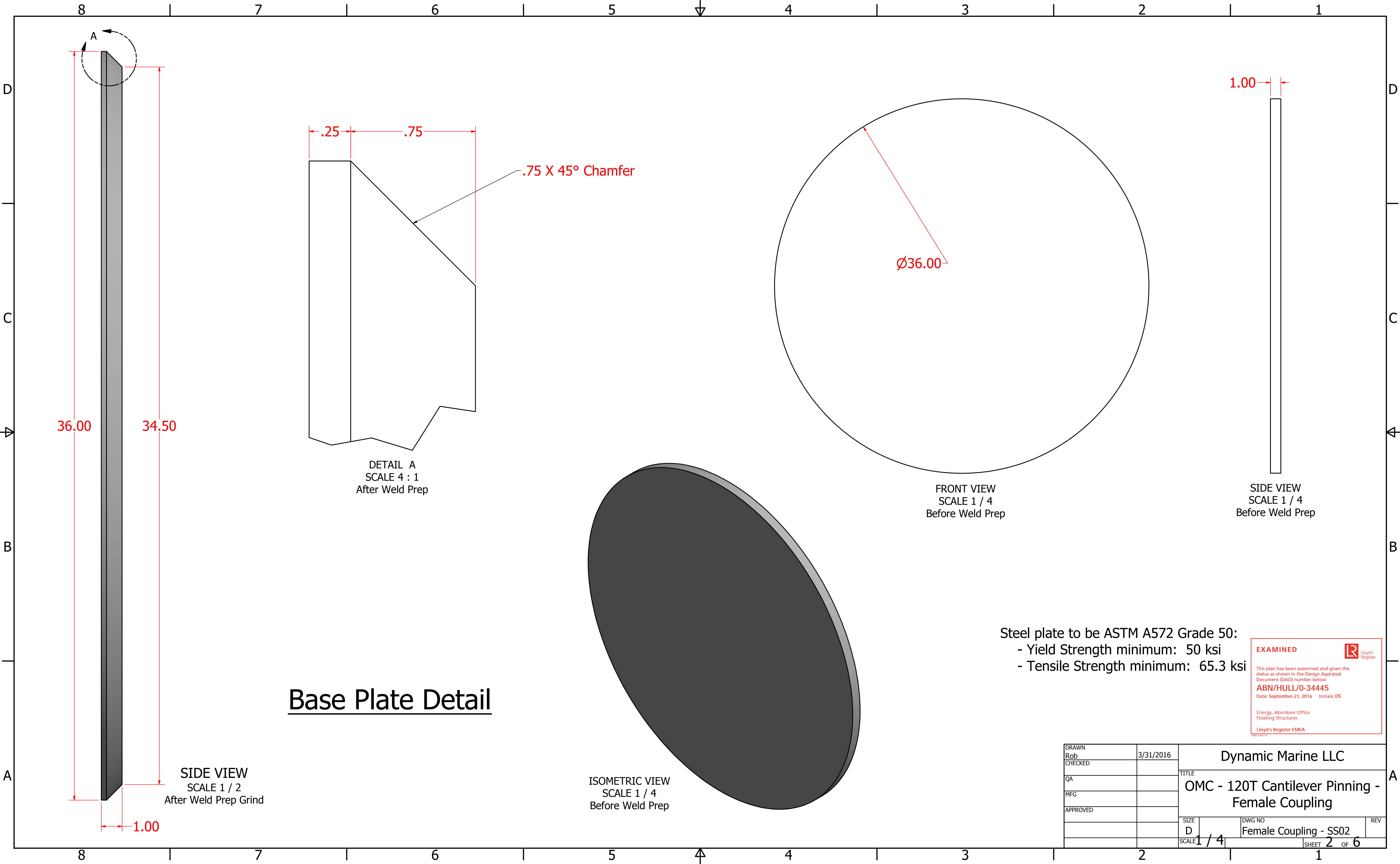
This plan has been examined and given the status as shown in the Design Appraisal Document (DAD) number below:
ABN/HULL/0-34445
Date: September-21, 2016 Initials: DS

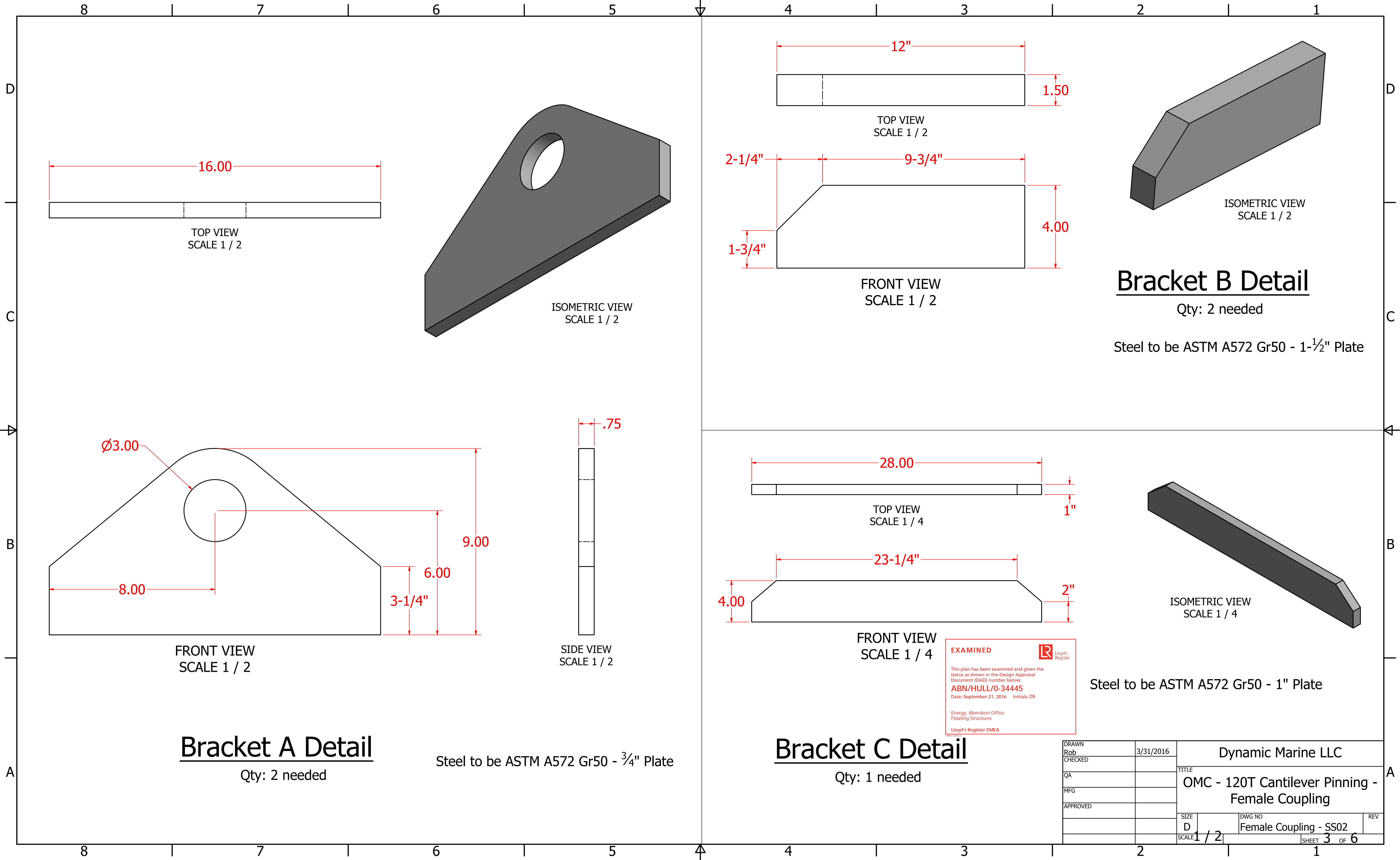
Energy, Aberdeen Office
Floating Structures
Lloyd's Register EMEA

Female Coupling Detail

DRAWN Rob	3/31/2016	Dynamic Marine LLC		
CHECKED		TITLE		
QA		OMC - 120T Cantilever Pinning - Female Coupling		
MFG				
APPROVED				
		SIZE D	DWG NO Female Coupling - SS02	REV
		SCALE 1 / 4	SHEET 1 OF 6	

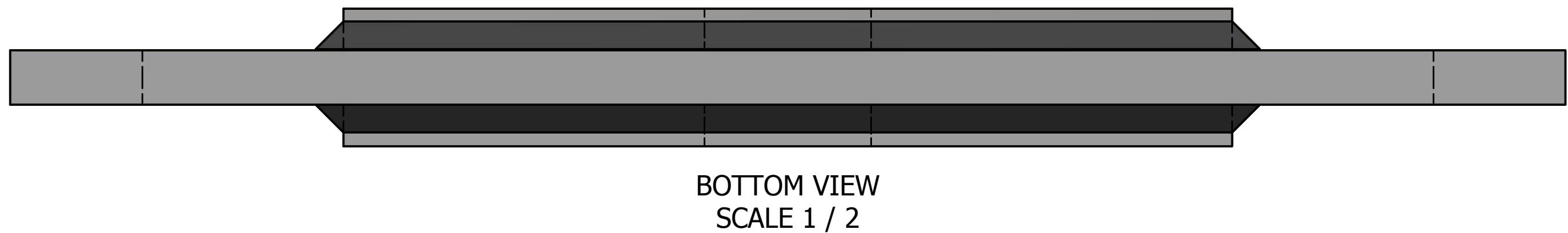
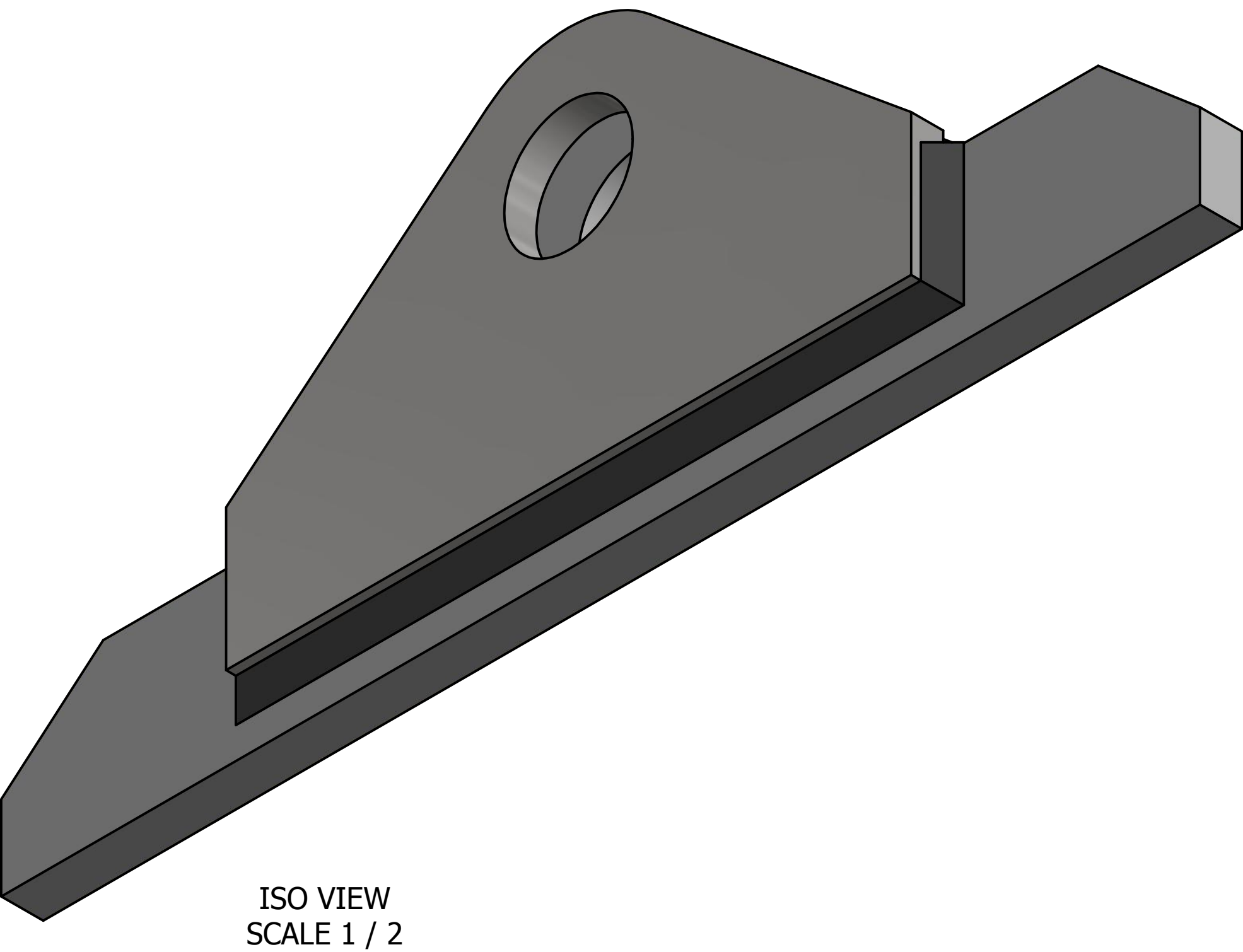
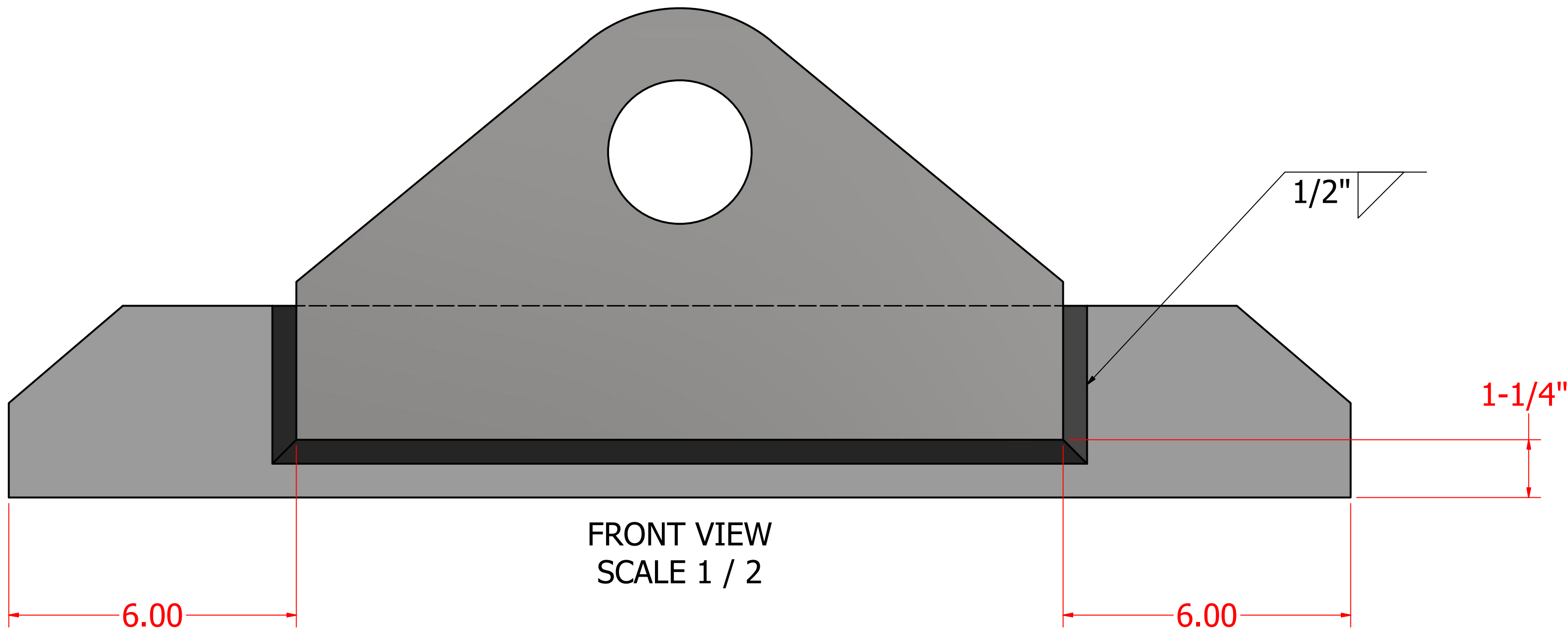
8 7 6 5 4 3 2 1





Assembly

Step 1: Weld the Qty:2 of Bracket A
onto Bracket C as shown.
All welding SMAW E-70XX or FCAW E7XT-X



EXAMINED

 Lloyd's Register

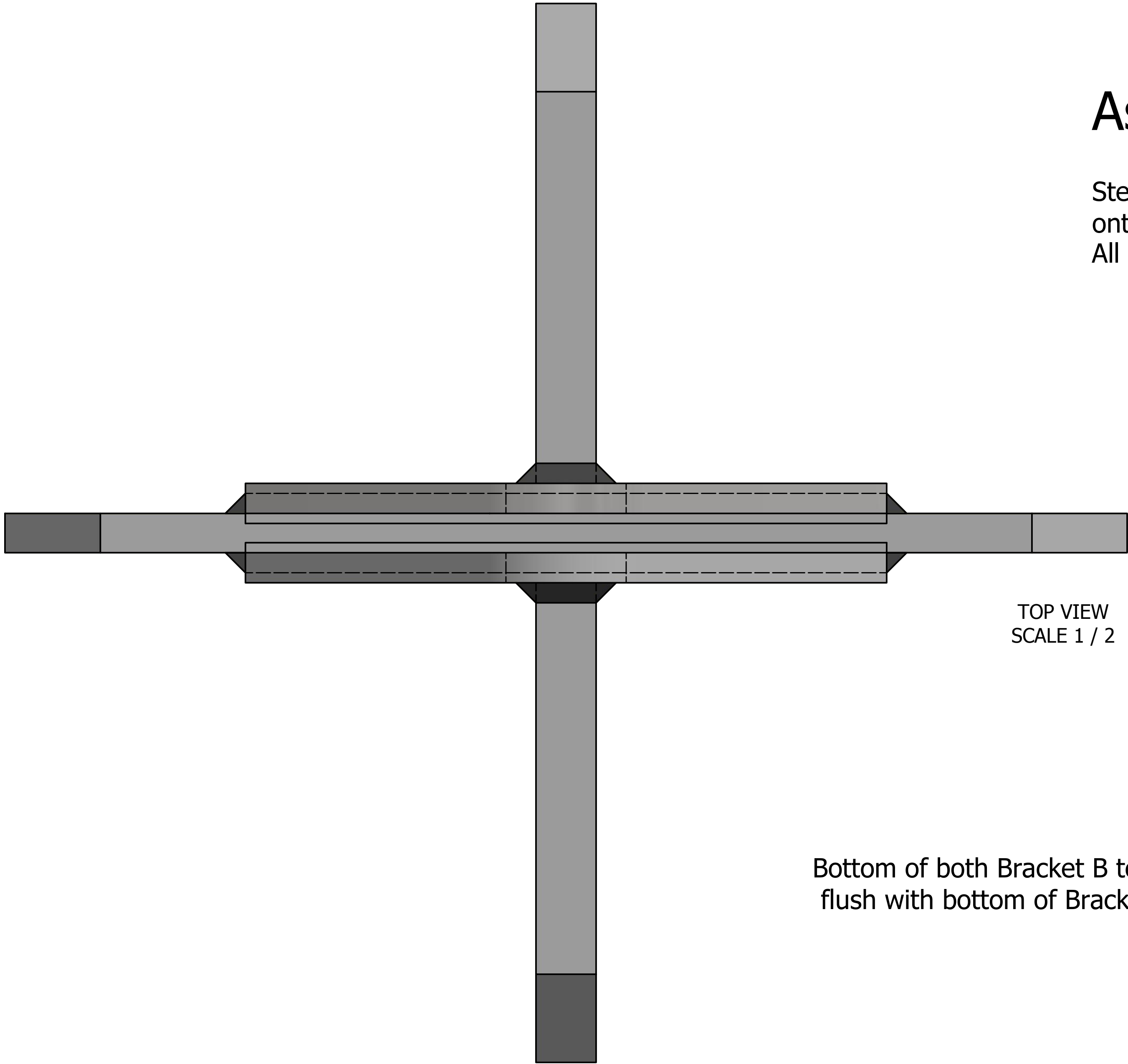
This plan has been examined and given the status as shown in the Design Appraisal Document (DAD) number below:
ABN/HULL/0-34445
Date: September-21, 2016 Initials: DS

Energy, Aberdeen Office
Floating Structures
Lloyd's Register EMEA

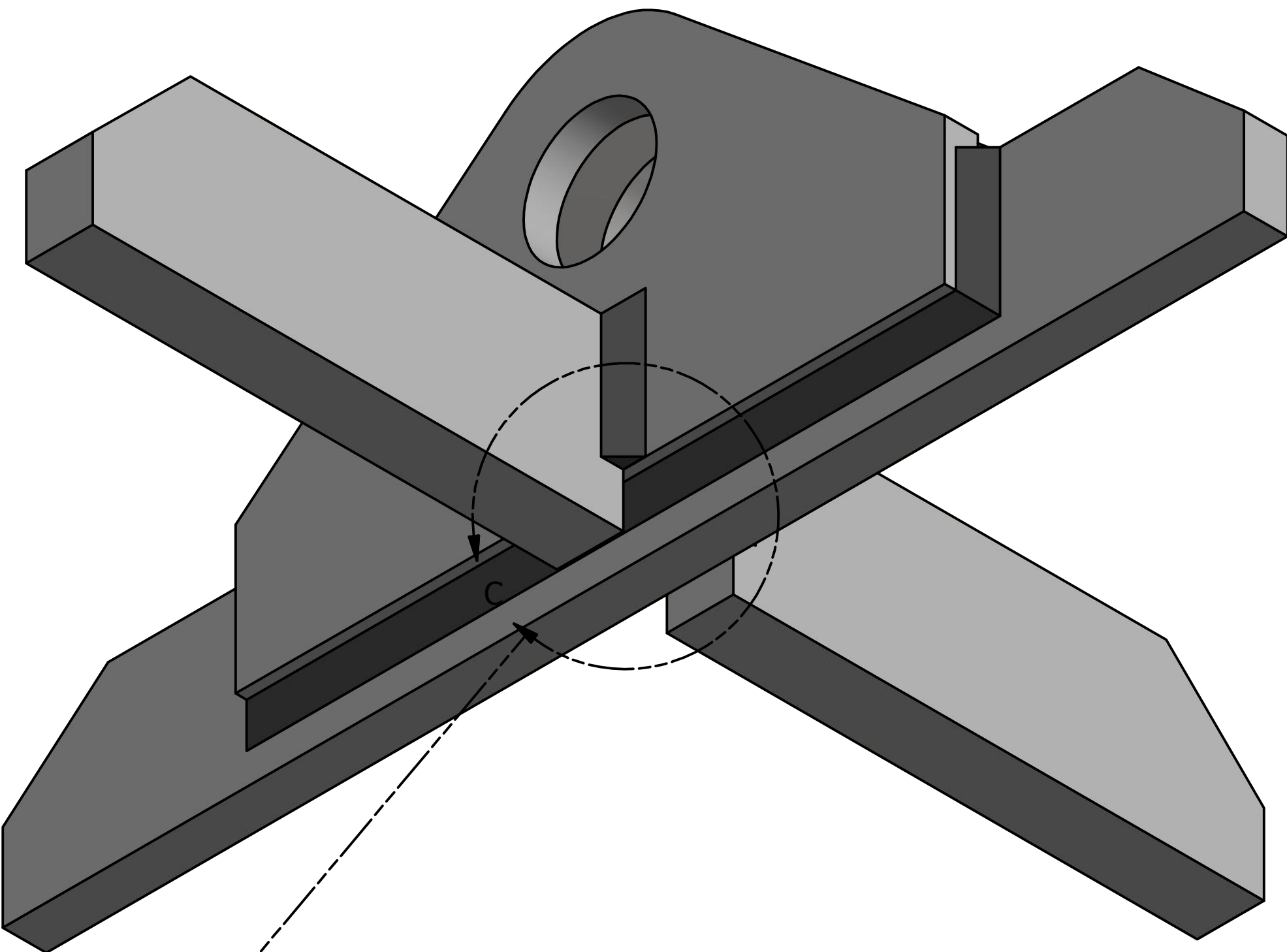
DRAWN Rob		3/31/2016		Dynamic Marine LLC			
CHECKED				TITLE			
QA				OMC - 120T Cantilever Pinning - Female Coupling			
MFG							
APPROVED							
				SIZE D	DWG NO Female Coupling - SS02		REV
				SCALE 1 / 2	SHEET 4 OF 6		

Assembly Cont.

Step 2: Weld the Qty:2 of Bracket B
onto the assembly as shown.
All welding SMAW E-70XX or FCAW E7XT-X

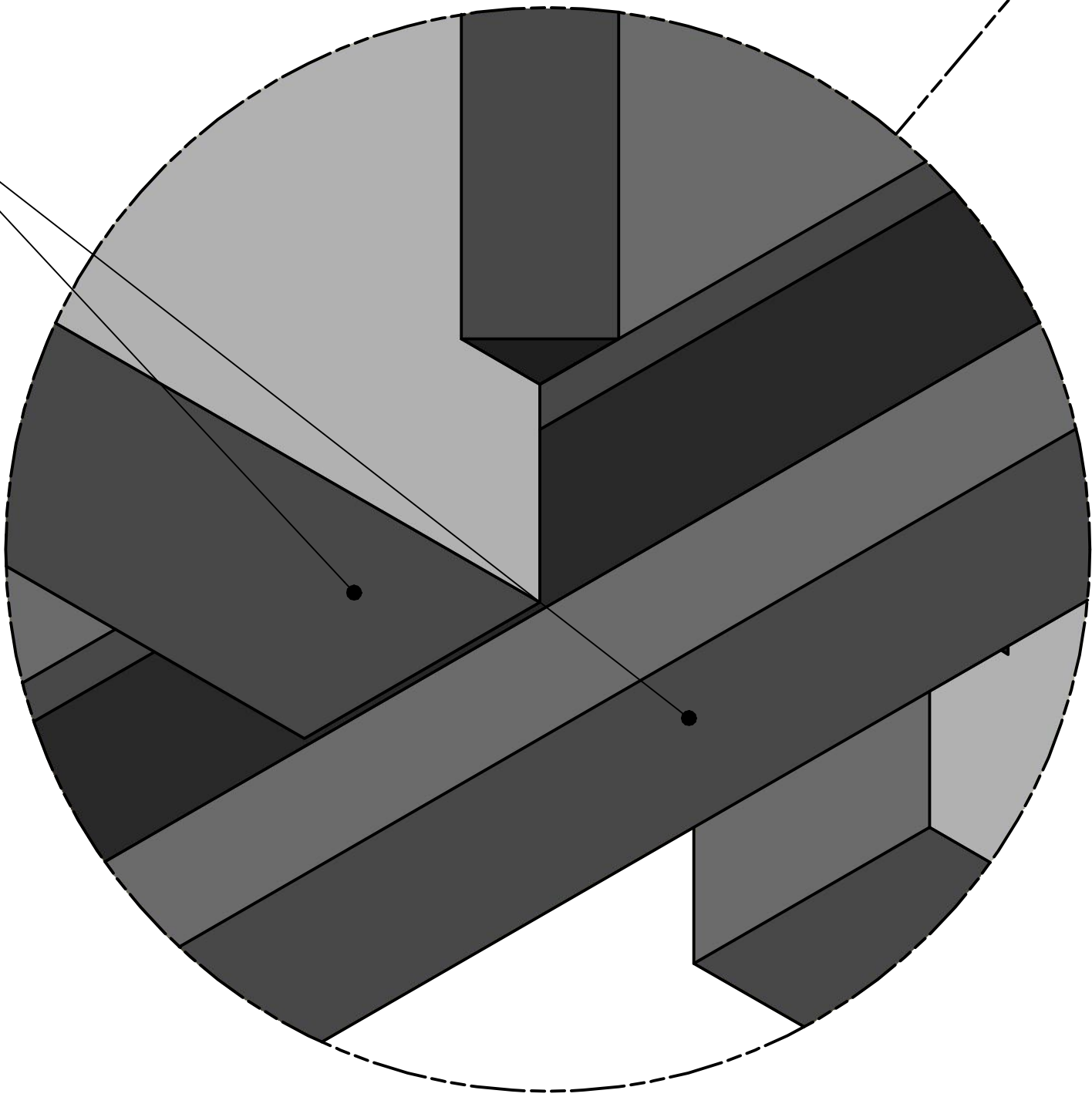


TOP VIEW
SCALE 1 / 2

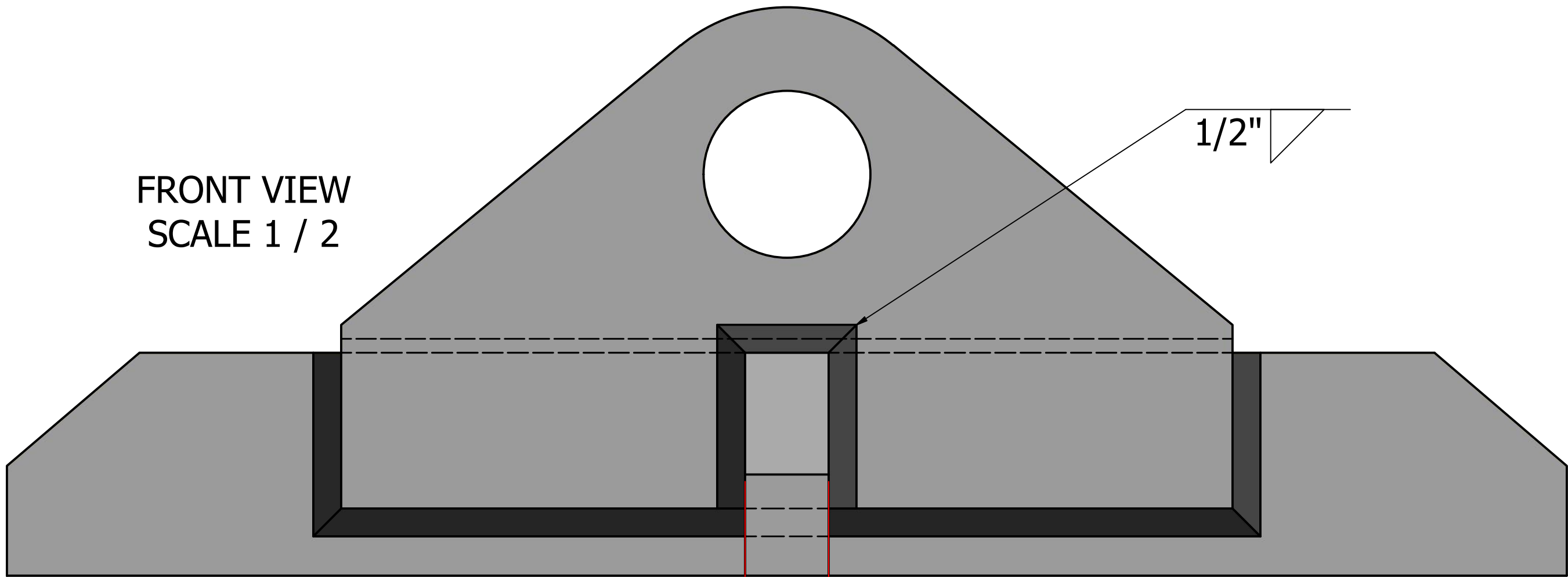


ISO VIEW
SCALE 1 / 2

Bottom of both Bracket B to be
flush with bottom of Bracket C



DETAIL C
SCALE 1.5 : 1



FRONT VIEW
SCALE 1 / 2

EXAMINED

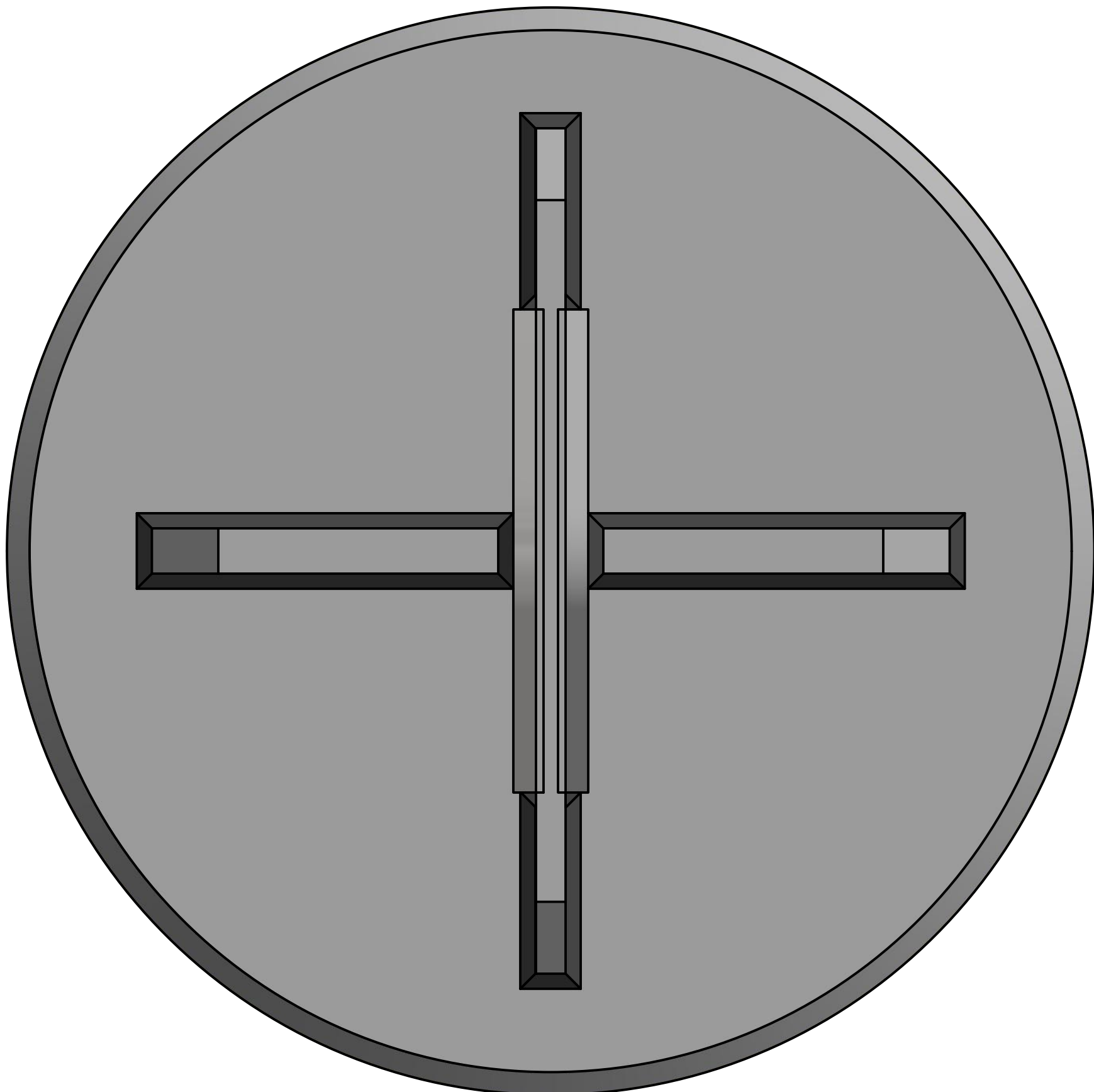
This plan has been examined and given the status as shown in the Design Appraisal Document (DAD) number below:
ABN/HULL/0-34445
Date: September-21, 2016 Initials: DS

Energy, Aberdeen Office
Floating Structures
Lloyd's Register EMEA

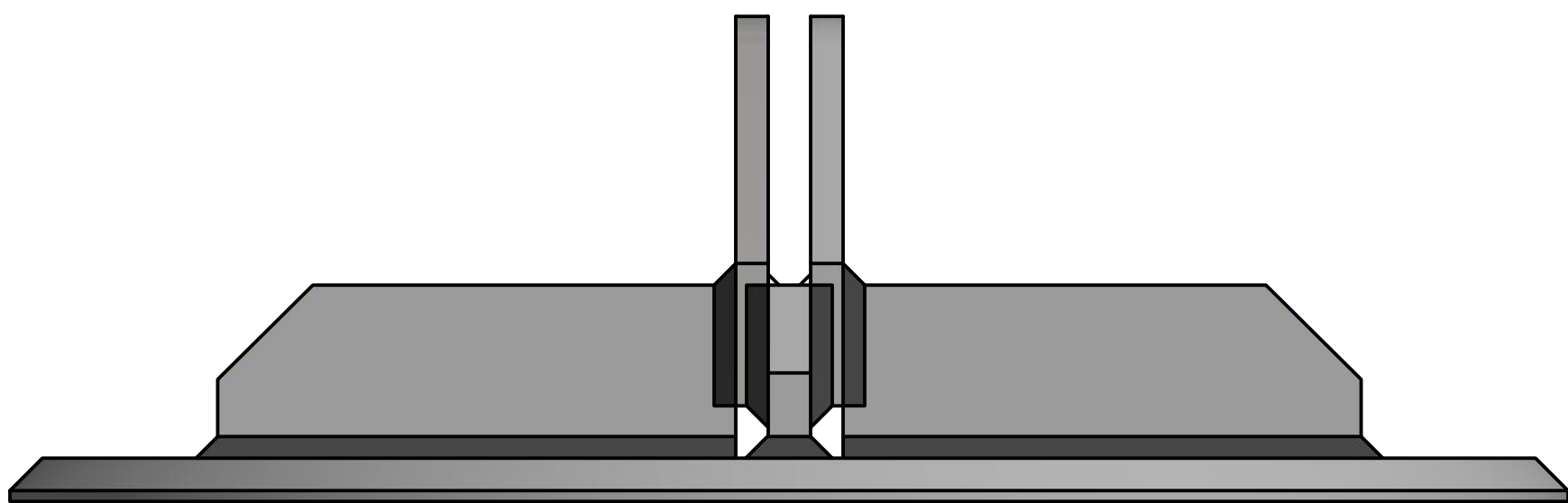
DRAWN Rob	3/31/2016	Dynamic Marine LLC		
CHECKED		TITLE		
QA		OMC - 120T Cantilever Pinning - Female Coupling		
MFG				
APPROVED				
		SIZE D	DWG NO Female Coupling - SS02	REV
		SCALE 1 / 2	SHEET 5 OF 6	

Assembly Cont.

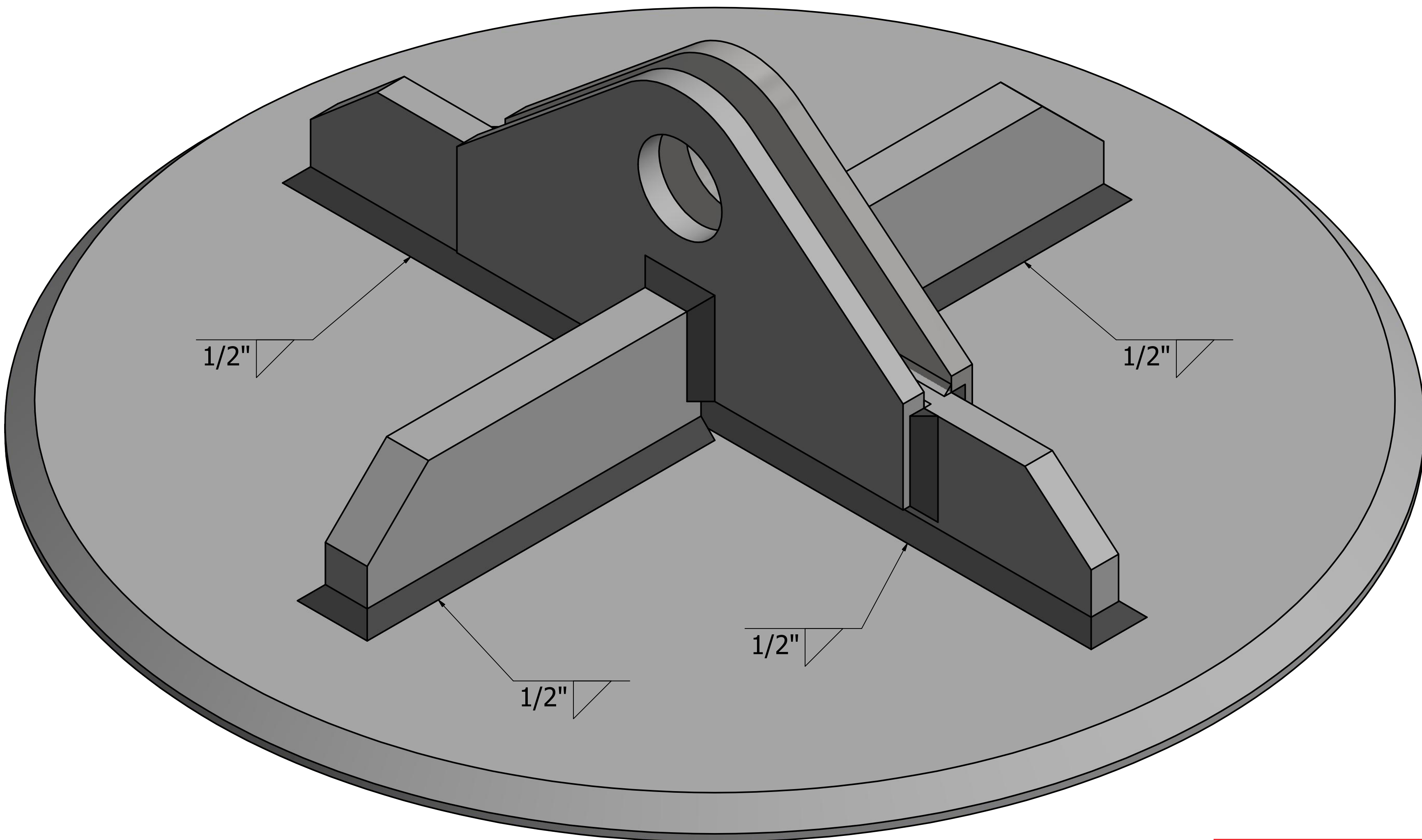
Step 3: Center the assembly on the Base Plate as shown.
Weld the assembly to the Base Plate



TOP VIEW
SCALE 1 / 4



FRONT VIEW
SCALE 1 / 4



ISO VIEW
SCALE 1 / 2

EXAMINED
This plan has been examined and given the status as shown in the Design Appraisal Document (DAD) number below:
ABN/HULL/0-34445
Date: September-21, 2016 Initials: DS
Energy, Aberdeen Office
Floating Structures
Lloyd's Register EMEA

DRAWN Rob	3/31/2016	Dynamic Marine LLC		
CHECKED		TITLE		
QA		OMC - 120T Cantilever Pinning - Female Coupling		
MFG				
APPROVED				
SIZE D		DWG NO	Female Coupling - SS02	REV
SCALE 1 / 2		SHEET 6	OF 6	