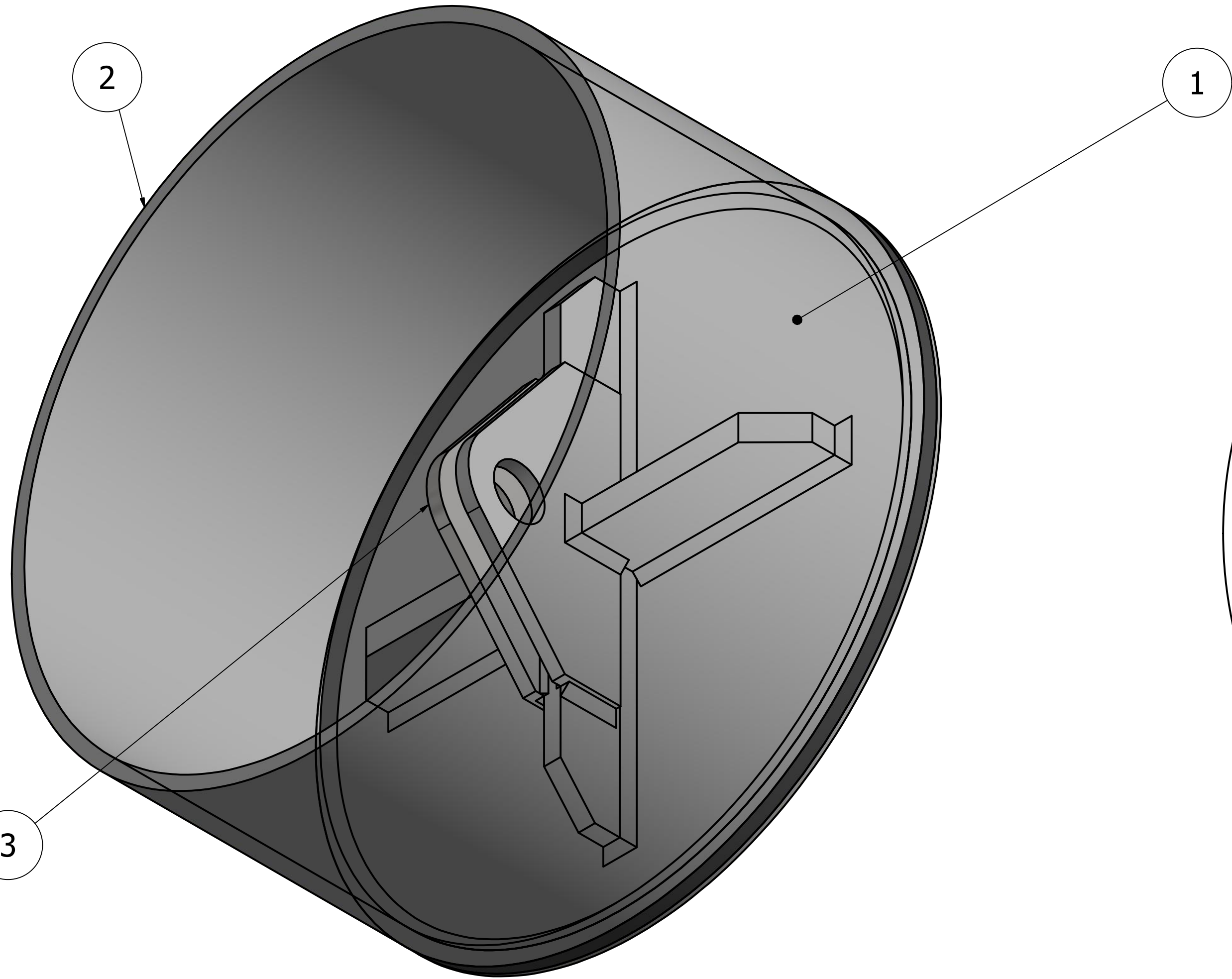


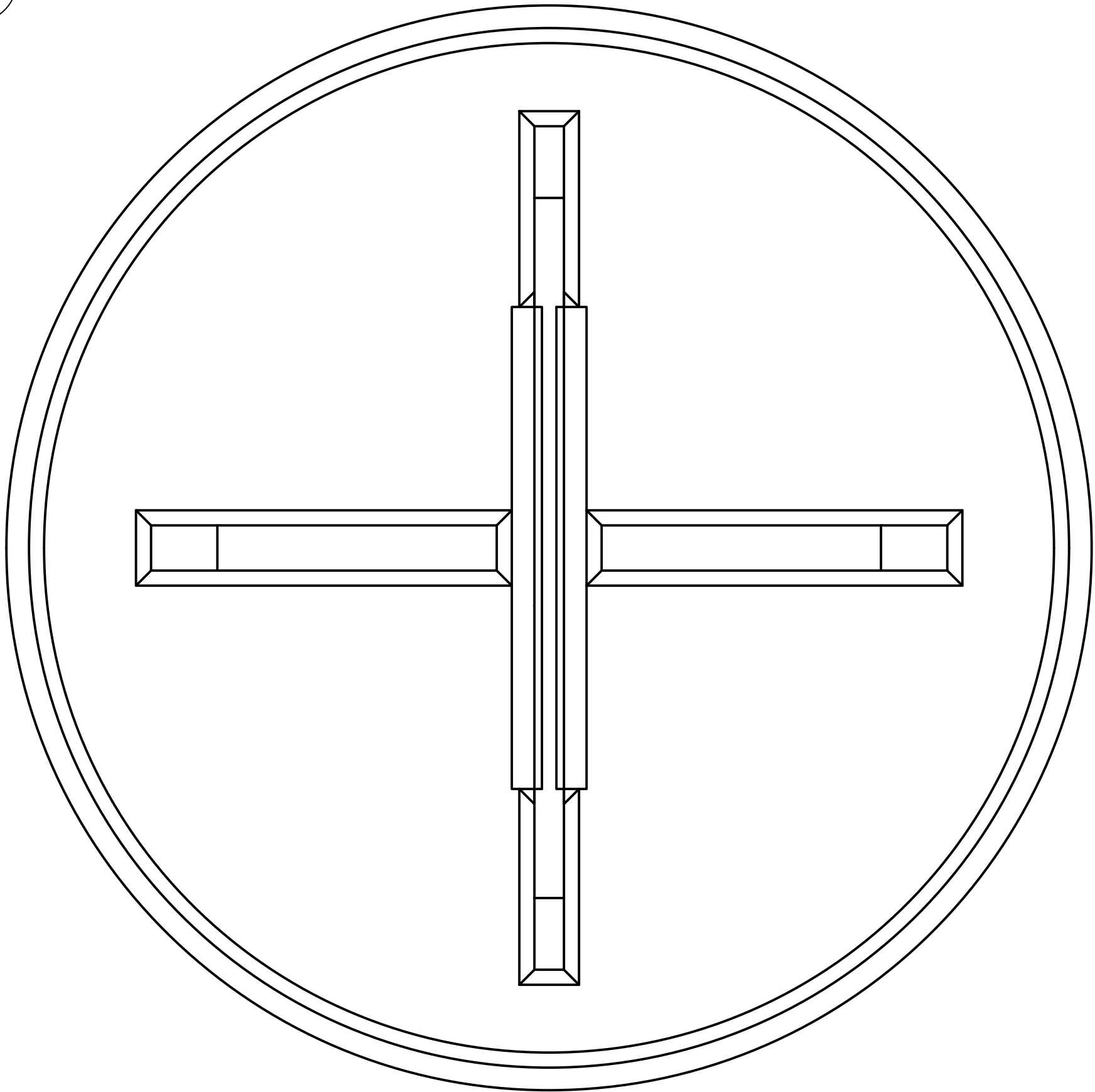
8 7 6 5 4 3 2 1

D

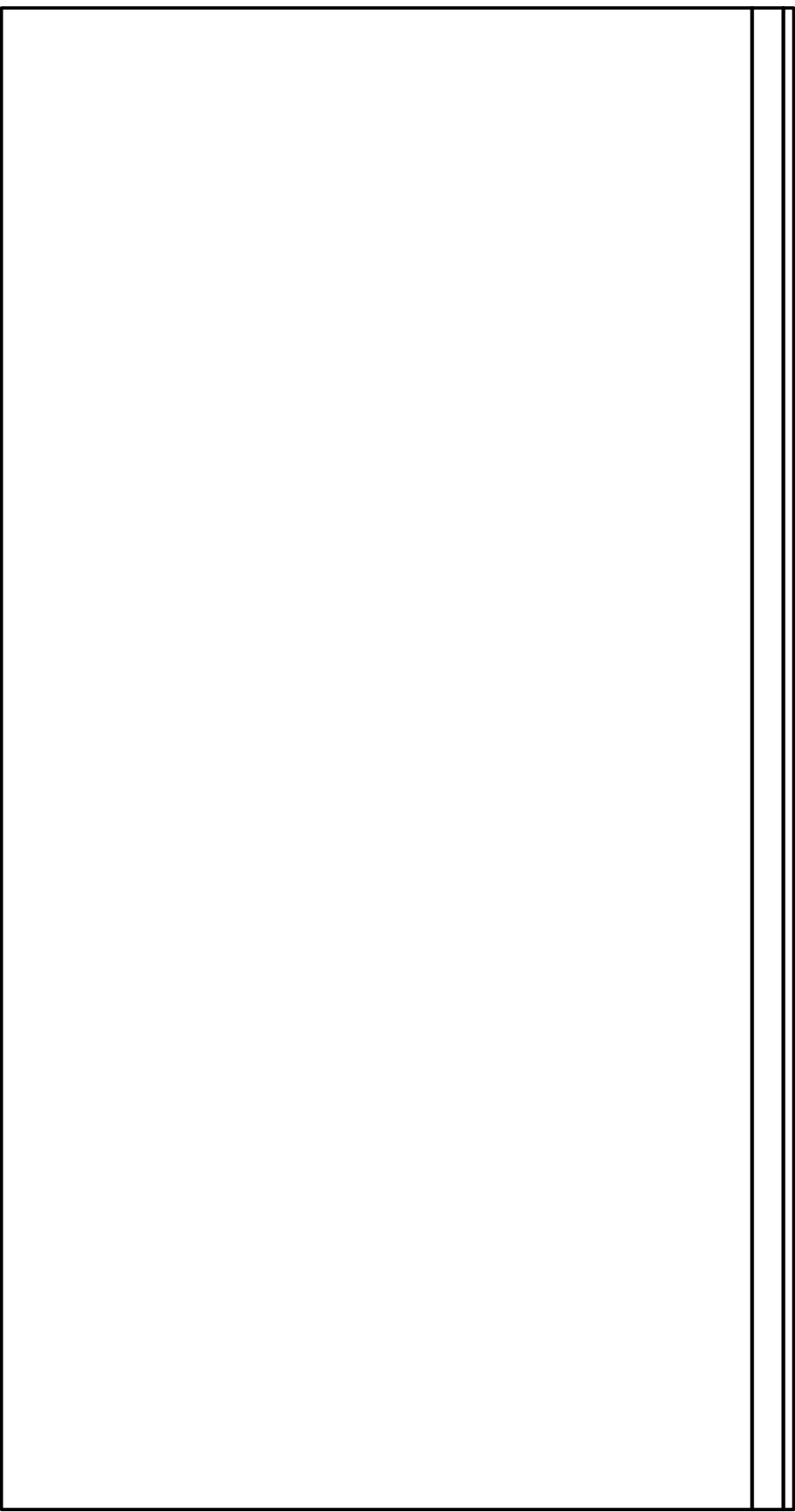
D



ISOMETRIC VIEW  
SCALE 1 / 4



TOP VIEW  
SCALE 1 / 4



SIDE VIEW  
SCALE 1 / 4

C

C

3

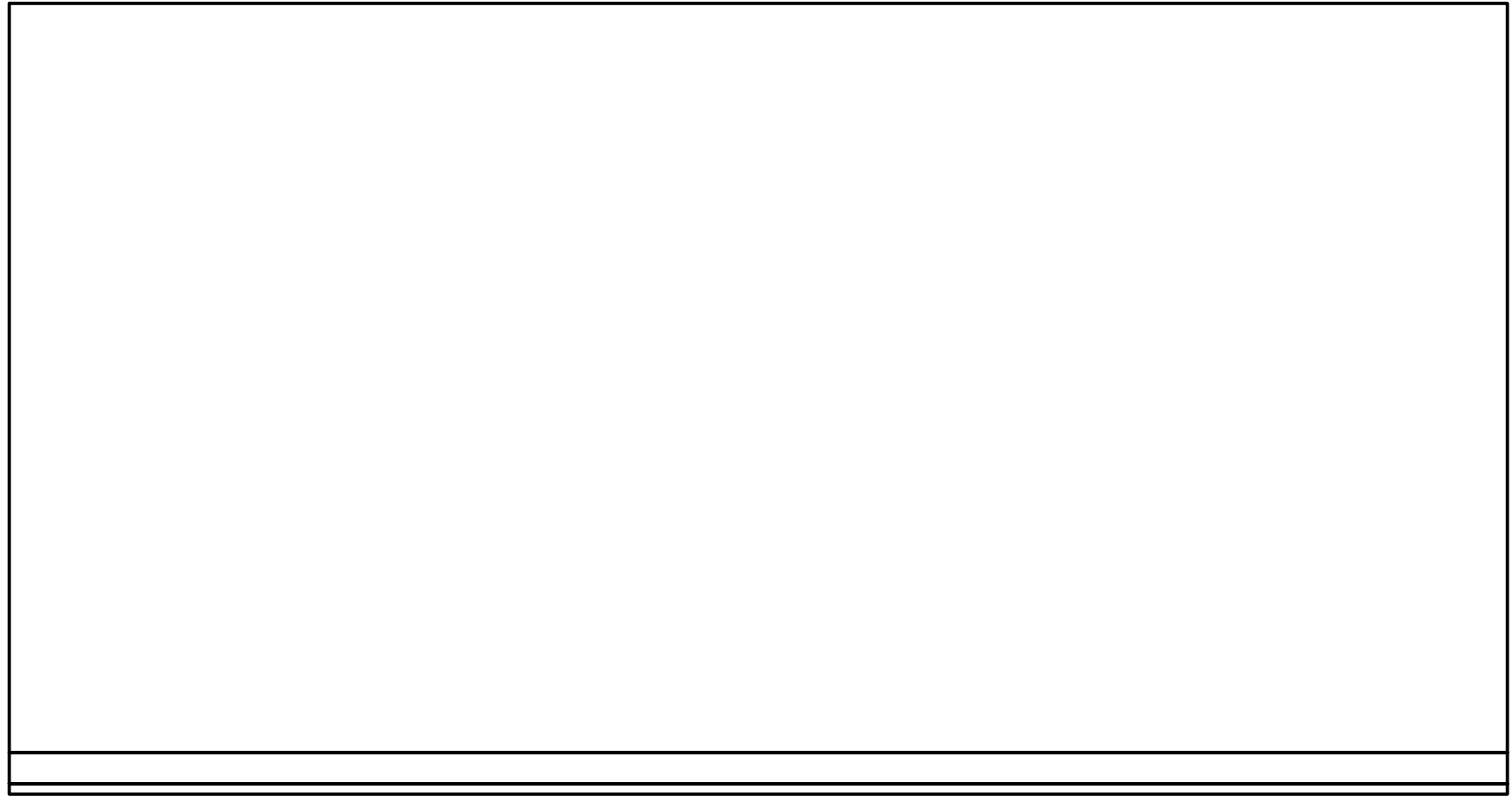
3

B

B

| PARTS LIST |     |                 |  |
|------------|-----|-----------------|--|
| ITEM       | QTY | PART NUMBER     | DESCRIPTION  |
| 1          | 1   | Base Plate      | 36" Diameter x 1" Thick<br>Plate - Details on SS02 |
| 2          | 1   | Pipe Section    | 36" O.D. - 3/4" Thick -<br>Details on Sheet 2      |
| 3          | 1   | Female Coupling | Details on SS02                                    |

Qty:4 of these Female Fittings  
needed to pin the cantilever



FRONT VIEW  
SCALE 1 / 4

EXAMINED

Lloyd's Register

This plan has been examined and given the status as shown in the Design Appraisal Document (DAD) number below:  
**ABN/HULL/O-34445**  
Date: September-21, 2016 Initials: DS

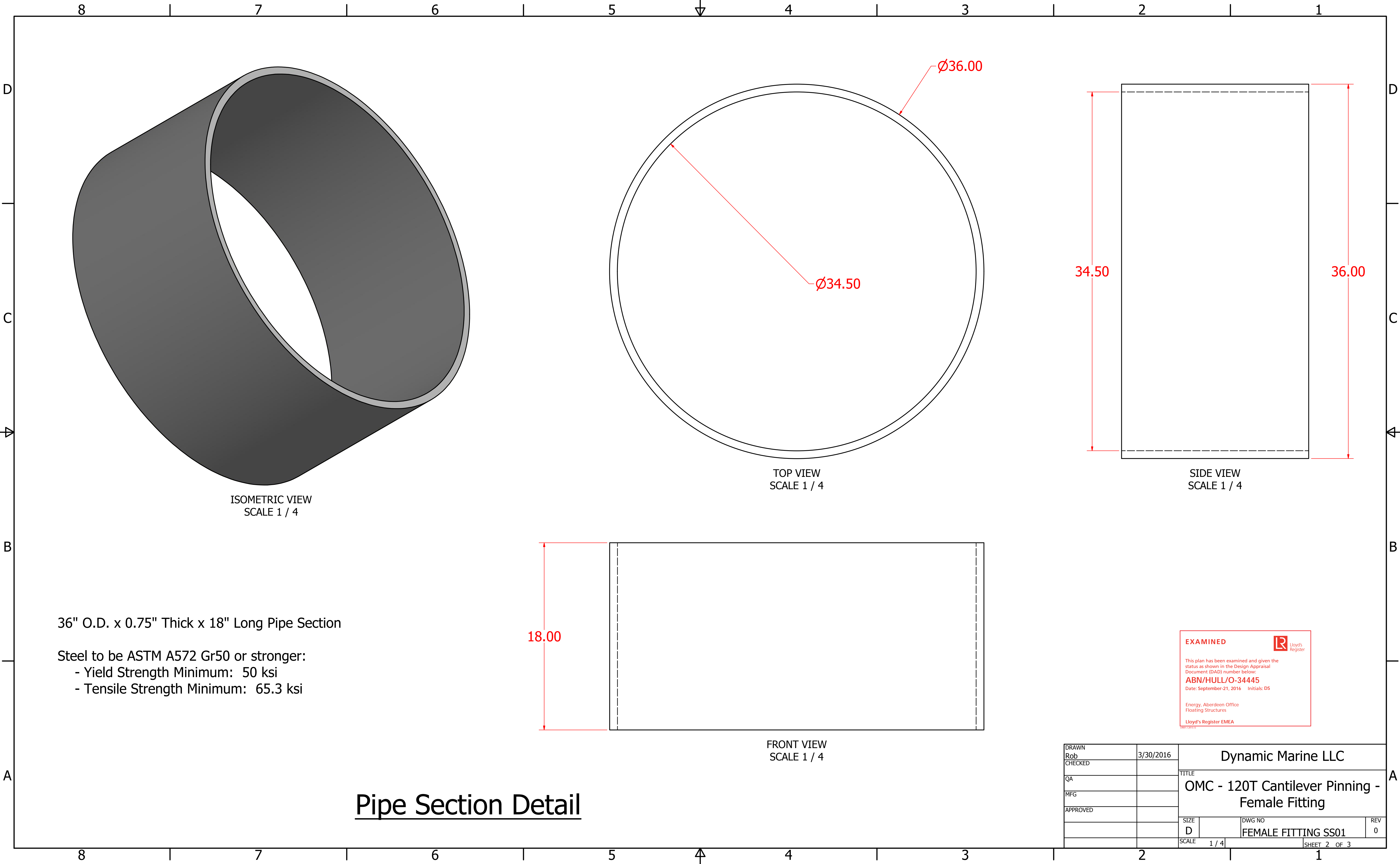
Energy, Aberdeen Office  
Floating Structures  
Lloyd's Register EMEA

|              |           |  |                               |          |
|--------------|-----------|--|-------------------------------|----------|
| DRAWN<br>Rob | 3/30/2016 | Dynamic Marine LLC                             |                               |          |
| CHECKED      |           | TITLE  |                               |          |
| QA           |           | OMC - 120T Cantilever Pinning - Female Fitting |                               |          |
| MFG          |           |  |                               |          |
| APPROVED     |           |  |                               |          |
|              |           | SIZE<br>D                                      | DWG NO<br>FEMALE FITTING SS01 | REV<br>0 |
|              |           | SCALE<br>1 / 4                                 | SHEET 1 OF 3                  |          |

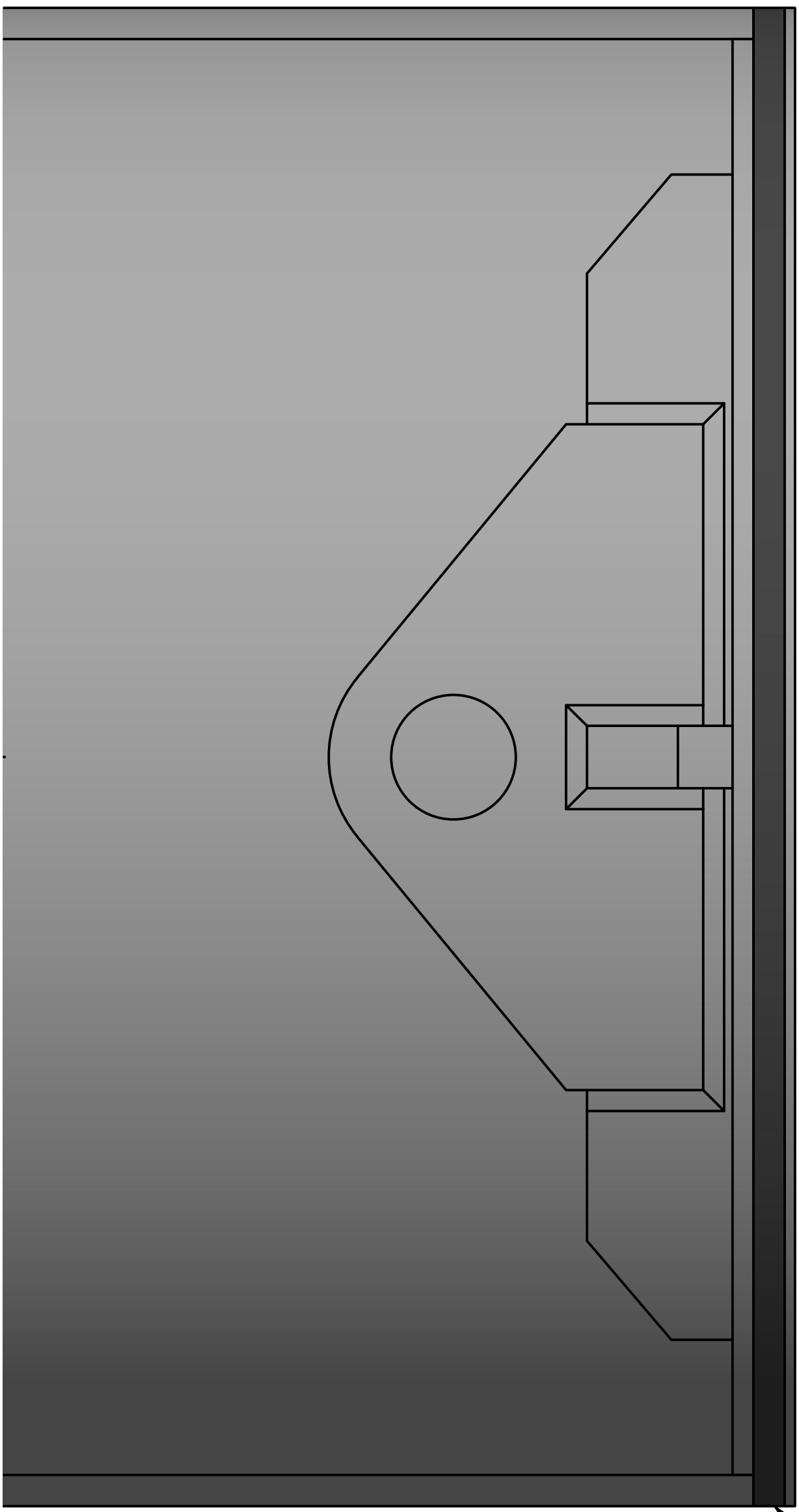
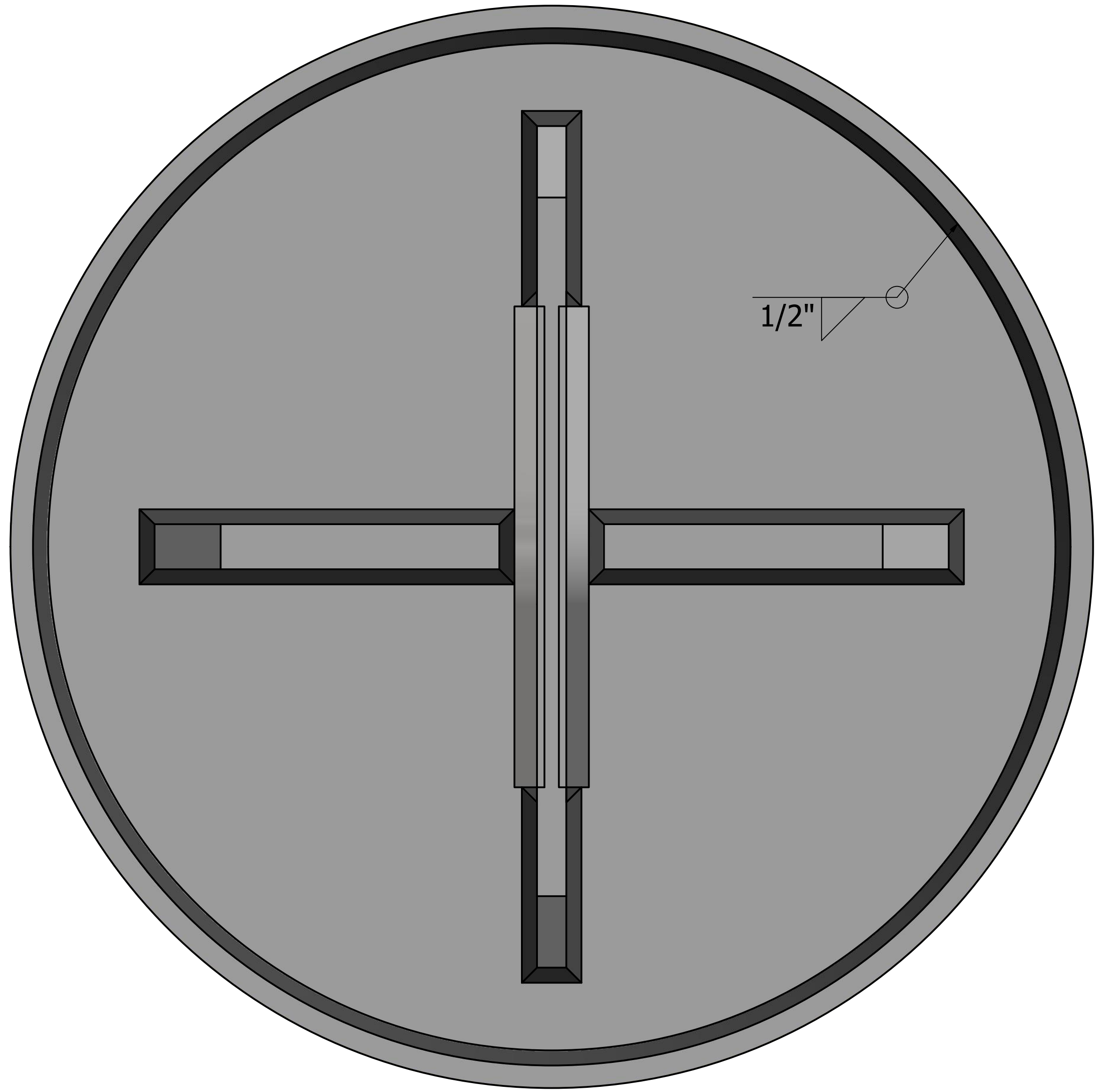
8 7 6 5 4 3 2 1

A

A



Pipe Section Detail



All welding SMAW E-70XX or FCAW E7XT-X

Welding Detail

EXAMINED

This plan has been examined and given the status as shown in the Design Appraisal Document (DAD) number below:  
**ABN/HULL/O-34445**  
Date: September-21, 2016    Initials: DS

Energy, Aberdeen Office  
Floating Structures  
Lloyd's Register EMEA

|              |           |  |                               |          |
|--------------|-----------|--|-------------------------------|----------|
| DRAWN<br>Rob | 3/30/2016 | Dynamic Marine LLC                             |                               |          |
| CHECKED      |           | TITLE  |                               |          |
| QA           |           | OMC - 120T Cantilever Pinning - Female Fitting |                               |          |
| MFG          |           |  |                               |          |
| APPROVED     |           |  |                               |          |
|              |           | SIZE<br>D                                      | DWG NO<br>FEMALE FITTING SS01 | REV<br>0 |
| SCALE 1 / 3  |           | SHEET 3 OF 3                                   |                               |          |