

WORM SCREW AUTOMATION FOR SWING GATES

CARDIN AUTOMATION BL
ELECTROMECHANICAL RAMS



76

CARDIN KIT BL
ELECTROMECHANICAL RAMS 24-230V



94



WORM SCREW AUTOMATION FOR SWING GATES



CARDIN AUTOMATION SERIES BL

The automation is made up of a series of components consisting of an installation management programming unit, 1 or 2 worm screw rams and a special connecting cable. The ram, built around a robust structure in cast aluminium, features an efficient motor that works in complete synergy with a high performance reduction unit that is isolated inside a waterproof compartment and is lubricated using permanently fluid grease. The special, well thought out, three piece carter, the rotating screw supported by double bearings and the special drag screw make it a top of the range ram with a unique performance level. It moves silently and fluently and is controlled (via an encoder integrated into the motor) by the programmer supplied with the product.

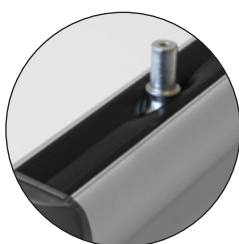
These horizontal action rams are extremely easy to fit without need for brickwork and they offer excellent service in terms of the number of manoeuvres.

Use with the following Cardin programmers CC242ETOPCB, CC242EXTOPCB.

Gate position is encoder-controlled and self-programming thus reducing installation times to a minimum and optimising the programming procedure. Repositioning takes place automatically whenever foreign objects get in the way of the gate as it is moving. The electronic control unit is completed by the anti-crush and "soft start" and "soft stop" functions.

In case of blackouts, emergency manoeuvring is guaranteed by a key-operated manual release mechanism that is efficient under all working conditions.

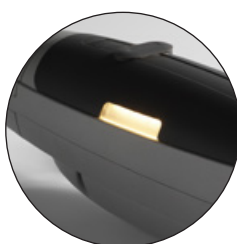
The ram can be fitted with an external lever-operated locking and unlocking system using a remote cord.



WORM SCREW WITH ANTI-DUST PROTECTION



STRUCTURE IN CAST ALUMINIUM



GATE MOVEMENT INDICATOR LEDS



LEVER ACTIVATED MANUAL RELEASE SYSTEM



SELF-PROGRAMMING MONITORED BY AN LCD GRAPHICS DISPLAY



CARDIN AUTOMATION SERIES BL

PRODUCT DESCRIPTION

ORDER NUMBER

ELECTROMECHANICAL RAM WITH A 24V MOTOR

Self-locking ram controlled by encoder. The geared motor locks the gate leaf in the closed position.

Supplied with all the fittings necessary for mounting one ram including the front and rear brackets in galvanised steel.

ECU to be ordered separately CC242ETOPCB / CC242EXTOPCB.

Standard version for gates with a maximum length of 2,5m, maximum weight 300kg.



BLEGOS



ELECTROMECHANICAL RAM WITH A 24V MOTOR

Self-locking ram controlled by encoder. The geared motor locks the gate leaf in the closed position.

Supplied with all the fittings necessary for mounting one ram including the front and rear brackets in galvanised steel.

ECU to be ordered separately CC242ETOPCB / CC242EXTOPCB.

Long version for gates with a maximum length of 3,5m (4m with an electric lock) maximum weight 400kg.



BLESOL



OPTIONAL BRACKETS

front and rear brackets in galvanised steel.

BLSTAE



10m CABLE

with end sleeves.

CABPC10



For the electric locks see page 159.

CARDIN AUTOMATION SERIES BL



SELF-PROGRAMMING ECU FOR BLEGOS/BLESOL

Programmer for the management of two encoder-controlled motors.
Power supply 230Vac.

Motor power supply 24Vdc.

Maximum power yield 250W.

Fitted with a multi-decoding module S449-S486-S504-S508.

Compatible with the INTPRG-3G/WF system that allows the monitoring and programming of system parameters from remote positions.

Batteries and a battery charger in the versions CC242ETOPCB and CC242EXTOPCB.

For more information turn to page 168.



Compatible with the data exchange system between digital devices (smartphone, tablet, etc.) and the Cardin multifunctional control units.



See section 24V ECU INTERFACE DEVICES on page 178

ELECTRONIC PROGRAMMER

CC242ETOP

ECU, BATTERY CHARGER AND NiMH BATTERIES

CC242ETOPCB

ECU, BATTERY CHARGER AND NiMH BATTERIES

CC242EXTOPCB

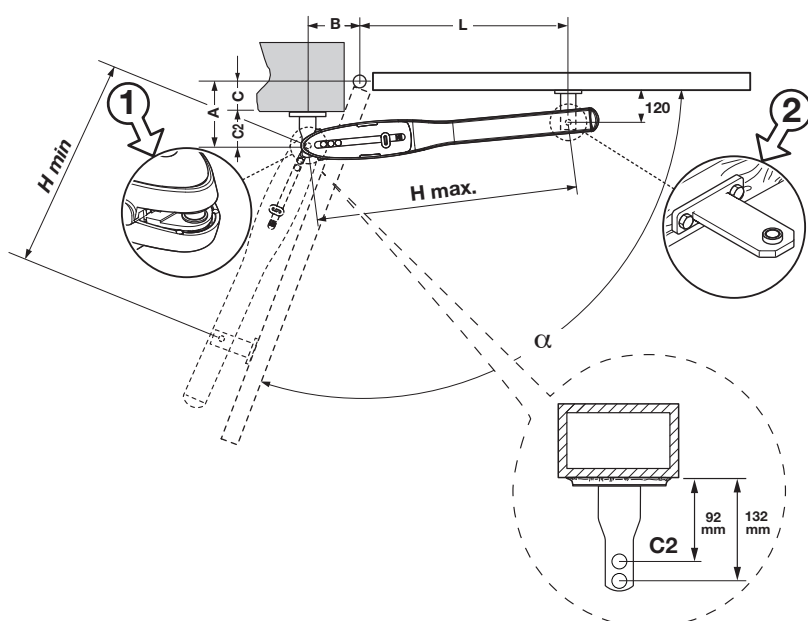
KIT BATTERY CHARGER + NiMH BATTERIES

Allows the CC242ETOP unit to work during blackouts.

KBNIMH-1



LIMITS OF USE BLEGOS - BLESOL



BLEGOS (H min. 420 - H max. 800)

α°	A	B	C	C2	L
90	132	200	0	132	600
90	132-182	200	0 - 50	132	600
90	183-203	180	51 - 70	132	620
90	204-224	160	71 - 90	132	640
90	183-203	160	91-110	92	630
90	204-224	150	110-130	92	650
110	132	200	0	132	600
110	132-182	180	0 - 50	132	620
110	183-203	170	51 - 70	92	630
110	204-224	160	71 - 90	92	640

BLESOL (H min. 420 - H max. 950)

α°	A	B	C	C2	L
90	132	240	0	132	700
90	132-182	220	0 - 50	132	720
90	183-203	210	51 - 70	132	720
90	204-224	200	71 - 90	132	730
90	183-203	180	91-110	92	740
90	204-224	180	110-130	92	760
110-120	132	240	0	132	700
110-120	132-182	220	0 - 50	132	720
110	183-203	210	51 - 70	132	720
110	204-224	200	71 - 90	132	730
110	183-203	180	91-110	132	740
110	204-224	180	110-130	132	760

Note: for an optimised installation use the values highlighted in grey.



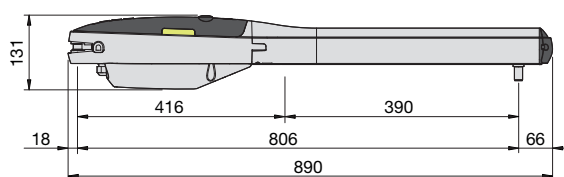
CARDIN AUTOMATION SERIES BL

RAM SPECIFICATIONS

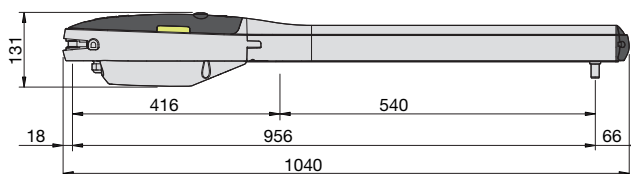
Motor power supply
Electrical input
Power input
Thrust
Travel distance (worm screw)
Duty cycle
Opening time 90°
Maximum opening angle
Protection grade

	BLEGOS	BLESOL
Vdc	24	24
A	2	2
W	60	60
N	1500	2000
mm	350	500
%	70	70
s	15	20
°	100	100
IP	44	44

OVERALL DIMENSIONS



BLEGOS (890 x 131 x 110)

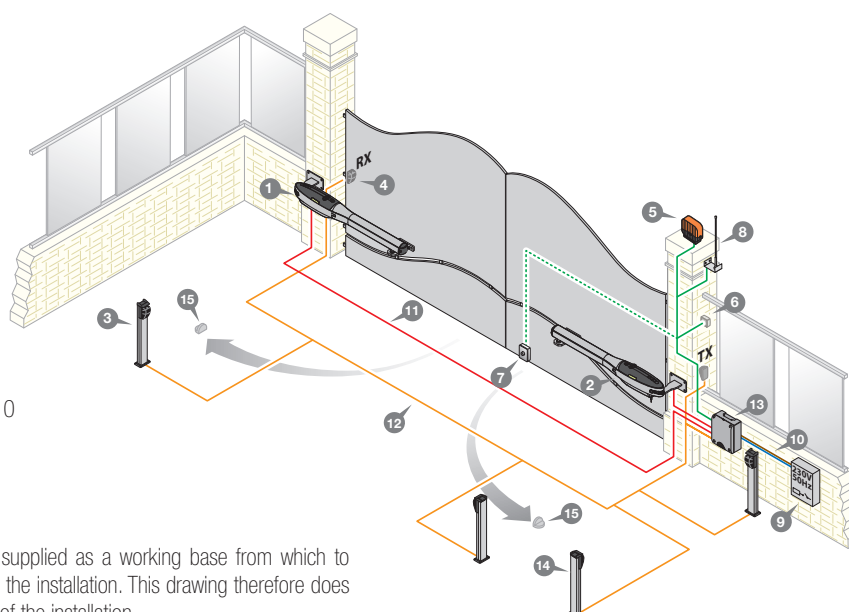


BLESOL (1040 x 131 x 110)

INSTALLATION EXAMPLE

LEGEND

- 1 Geared motor (left)
- 2 Geared motor (right)
- 3 Internal photocells
- 4 External photocells
- 5 Warning lights
- 6 Mechanical selector switch
- 7 Electric lock
- 8 External aerial
- 9 All pole circuit breaker
- 10 Mains cable 230Vac
- 11 Channelling for Cardin connection cable CABPC10
- 12 Channelling route for low voltage wires
- 13 Electronic programmer
- 14 Lateral protective photocells
- 15 Opening direction stop buffers



Attention: The drawing is purely indicative and is supplied as a working base from which to choose the Cardin electronic components making up the installation. This drawing therefore does not lay down any obligations regarding the execution of the installation.

WORM SCREW AUTOMATION FOR SWING GATES



CARDIN AUTOMATION SERIES BLADE

These reliable and robust rams, available in 24V intensive and 230V versions, are easy to fit without requiring brickwork, offer excellent service with regard to the number of manoeuvres and are particularly suited for installations with columns of all dimensions.

The following models are available:

- self-locking; the geared motor locks the gate leaf in the closed position.
- reversible; an electric lock must be fitted to guarantee that the gate leaf locks in the closed position.

The units do not feature on board electronics and we advise you to use the Cardin electronic programmers T624 - T600.

Gate positioning control is carried out via encoder with the help of mechanical travel limits and the self-programming system reduces installation times to a minimum and optimises the programming procedure.

Repositioning takes place automatically whenever foreign objects get in the way of the gate as it is moving. The electronic control unit is completed by the anti-crush and "soft start" and "soft stop" functions.

In case of blackouts, emergency manoeuvring is guaranteed (in the self-locking versions) by a practical lever-operated manual release system protected by a personalised key that is efficient under all working conditions.

An electric travel limit kit, guaranteeing precise control of the gate position, is also available.

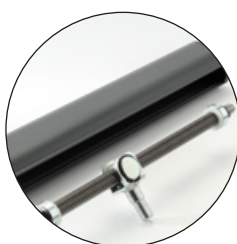
The ram can be fitted with an external lever-operated locking and unlocking system using a remote cord.



STRUCTURE IN CAST ALUMINIUM



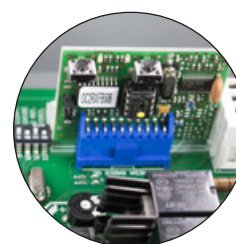
TRIANGULAR LOCK
IN PLASTIC



WORM SCREW SYSTEM



LEVER ACTIVATED MANUAL
RELEASE SYSTEM



ELECTRONIC PROGRAMMER WITH
OPTIONAL OPEN COLLECTOR CARD



CARDIN AUTOMATION SERIES BL

ELECTROMECHANICAL RAM WITH A 24V MOTOR

Self-locking encoder-controlled ram with mechanical travel limits. The geared motor locks the gate leaf in the closed position.

Supplied with all the fittings necessary for mounting one ram including the front and rear brackets in galvanised steel.

ECU to be ordered separately T624.

Standard version for gates max. length 3m, max. weight 250kg.



BLADE324



ELECTROMECHANICAL RAM WITH A 24V MOTOR

Self-locking encoder-controlled ram with mechanical travel limits. The geared motor locks the gate leaf in the closed position.

Supplied with all the fittings necessary for mounting one ram including the front and rear brackets.

Cardin ECU to be ordered separately T624.

Long version for gates max. length 5m, max. weight 300kg.



BLADE524



ELECTROMECHANICAL RAM WITH A 24V MOTOR

Reversible encoder-controlled ram with mechanical travel limits. An electric lock must be fitted to guarantee that the gate leaf locks in the closed position.

Supplied with all the fittings necessary for mounting one ram including the front and rear brackets.

Cardin ECU to be ordered separately T624.

Long version for gates max. length 5m, max. weight 300kg.



BLADE524REV



For the electric locks see page 159.



CARDIN AUTOMATION SERIES BL

ELECTROMECHANICAL RAM WITH A 230V MOTOR

Self-locking encoder-controlled ram with mechanical travel limits. The geared motor locks the gate leaf in the closed position. Supplied with all the fittings necessary for mounting one ram including the front and rear brackets in galvanised steel.

ECU to be ordered separately T600.

Standard version for gates max. length 3m, max. weight 250kg.



ELECTROMECHANICAL RAM WITH A 230V MOTOR

Reversible encoder-controlled ram with mechanical travel limits. An electric lock must be fitted to guarantee that the gate leaf locks in the closed position. Supplied with all the fittings necessary for mounting one ram including the front and rear brackets in galvanised steel. ECU to be ordered separately T600.

Standard version for gates max. length 3m, max. weight 250kg.



ELECTROMECHANICAL RAM WITH A 230V MOTOR

Self-locking encoder-controlled ram with mechanical travel limits. The geared motor locks the gate leaf in the closed position. Supplied with all the fittings necessary for mounting one ram including the front and rear brackets in galvanised steel.

ECU to be ordered separately T600.

Long version for gates max. length 5m, max. weight 300kg.



ELECTROMECHANICAL RAM WITH A 230V MOTOR

Reversible encoder-controlled ram with mechanical travel limits. An electric lock must be fitted to guarantee that the gate leaf locks in the closed position.

Supplied with all the fittings necessary for mounting one ram including the front and rear brackets in galvanised steel.

ECU to be ordered separately T600.

Long version for gates max. length 5m, max. weight 300kg.



For the electric locks see page 159.

BLADE3



BLADE3REV



BLADE5



BLADE5REV



CARDIN AUTOMATION SERIES BL



MECHANICAL GATE LOCK

for installations with two gates and a horizontal electric lock.

BLA



FIXED BRACKETS

front and rear.

BLSTA



ADJUSTABLE BRACKETS

front and rear.

BLASR



ELECTRICAL TRAVEL LIMITS

for 3m gates.

FCAS



for 5m gates.

FCAL



5 TRIANGULAR KEYS

Triangular keys in plastic.

TRGKEY



CYLINDER LOCK

Cylinder lock with two keys.

SELLCK



ELECTRONIC PROGRAMMER

for one or two 230V encoder-controlled motors complete with torque adjustment and deceleration. Factory set for the insertion of an open collector receiver card.

T600



ELECTRONIC PROGRAMMER

for one or two 24V encoder-controlled motors complete with speed regulation (with ECU data exchange) and deceleration. Factory set for the insertion of an open collector receiver card.

T624



KIT BATTERY CHARGER + NiMH BATTERIES

Allows the 24V programmers to work during blackouts.

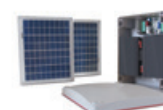
KBNIMH-T1



POWER SUPPLY KIT

Solar panels for use with all 24Vdc automation.

SUNPOWER



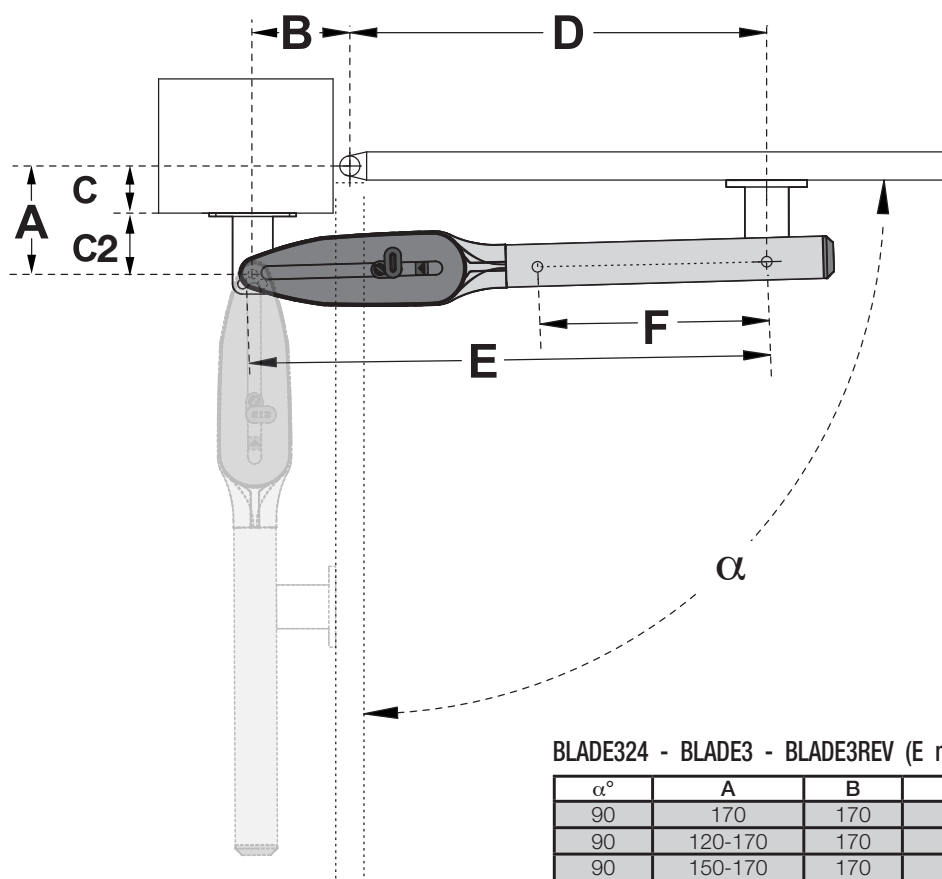
Compatible with the data exchange system between digital devices (smartphone, tablet, etc.) and the Cardin multifunctional control units. **See section 24V ECU INTERFACE DEVICES on page 178**





CARDIN AUTOMATION SERIES BL

LIMITS OF USE **BLADE**



BLADE324 - BLADE3 - BLADE3REV (E min. 455 / E max. 805 / F = 350)

α°	A	B	C	C2	D
90	170	170	0	170	640
90	120-170	170	0 - 50	120	640
90	150-170	170	51 - 70	100	640
90	150-170	170	71 - 90	80	640
90	165-185	150	91-110	75	660
90	185-205	135	111-130	75	675
100	170	170	0	170	640
110	90-140	150	0 - 50	90	660
110	130-150	150	51 - 70	80	660
110	135-155	150	71 - 90	65	660

BLADE524-BLADE524REV-BLADE5-BLADE5REV:(Emin.455/Emax.955/F=500)

α°	A	B	C	C2	D
90	170	180	0	170	780
90	170-220	200	0 - 50	170	760
90	210-240	200	51 - 70	160	760
90	210-240	200	71 - 90	120	760
90	220-240	190	91-110	100	770
90	240-270	170	110-130	90	780
110	170	180	0	170	780
110	170-220	200	0 - 50	170	760
110	210-240	190	51 - 80	160	765
110	210-240	190	81 - 120	120	765
110	220-240	190	121-150	90	765
100	240-270	180	151-180	90	775

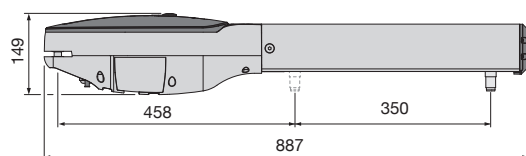
Note: for an optimised installation use the values highlighted in grey.



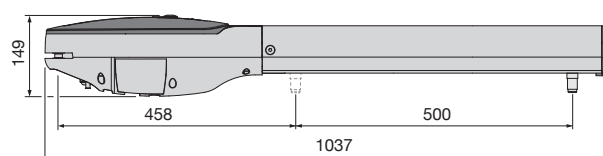
CARDIN AUTOMATION SERIES BL

RAM SPECIFICATIONS		BLADE324	BLADE3	BLADE3REV	BLADE524	BLADE524REV	BLADE5	BLADE5REV
Motor power supply	V	24	230	230	24	24	230	230
Electrical input	A	2	1,6	1,6	2	2	1,6	1,6
Power input	W	60	370	370	60	60	370	370
Thrust	N	1900	2200	1900	1900	1900	2200	1900
Travel distance (worm screw)	mm	350	350	350	500	500	500	500
Duty cycle	%	70	30	30	70	70	30	30
Opening time 90°	s	15	20	18	20	20	28,5	26
Maximum opening angle	°	110	110	110	110	110	110	110
Protection grade	IP	44	44	44	44	44	44	44

OVERALL DIMENSIONS



BLADE324 - BLADE3 - BLADE3REV (887 x 149 x 112)

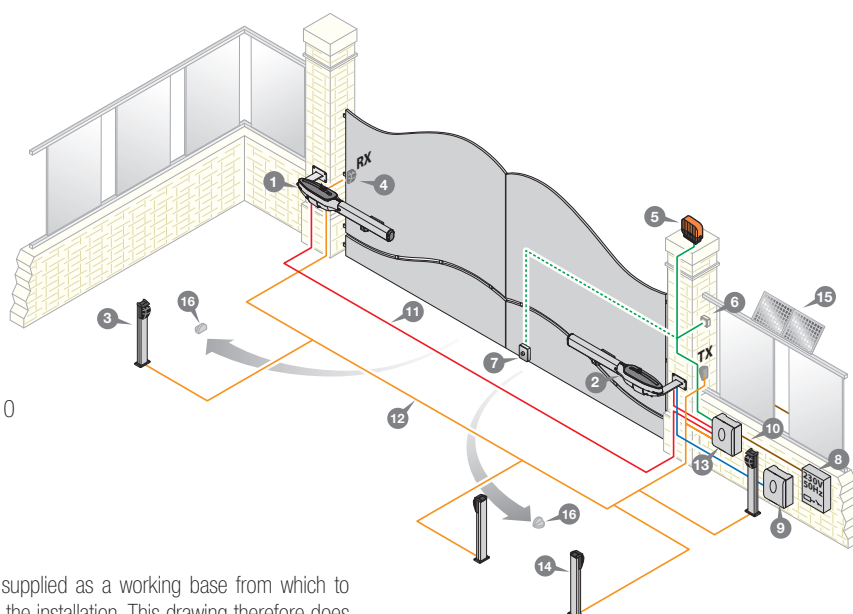


BLADE524 - BLADE524REV - BLADE5 - BLADE5REV (1037 x 149 x 112)

INSTALLATION EXAMPLE

LEGEND

- 1 Geared motor (left)
- 2 Geared motor (right)
- 3 Internal photocells
- 4 External photocells
- 5 Warning lights with aerial
- 6 Mechanical selector switch
- 7 Electric lock
- 8 All pole circuit breaker
- 9 Sun Power
- 10 Mains cable 230Vac
- 11 Channelling for Cardin connection cable CABPC10
- 12 Channelling route for low voltage wires
- 13 Electronic programmer
- 14 Lateral protective photocells
- 15 Solar panels
- 16 Opening direction stop buffers



Attention: The drawing is purely indicative and is supplied as a working base from which to choose the Cardin electronic components making up the installation. This drawing therefore does not lay down any obligations regarding the execution of the installation.



WORM SCREW AUTOMATION FOR SWING GATES



CARDIN AUTOMATION SERIES BL TAG

These electromechanical rams with 24Vdc motors suitable for small residential installations with two swing gate leaves or one pedestrian gate are easy to fit without requiring brickwork and offer excellent service with regard to the number of manoeuvres.

Available in two models, right and left fitting, both of which are self-locking in order to guarantee that the gate remains locked in the closed position.

The units do not feature on board electronics and we advise you to use the Cardin electronic programmer T624.

Gate positioning control is carried out via encoder with the help of mechanical travel limits and the self-programming system reduces installation times to a minimum and optimises the programming procedure.

Repositioning takes place automatically whenever foreign objects get in the way of the gate as it is moving. The electronic control unit is completed by the anti-crush and "soft start" and "soft stop" functions.

In case of blackouts, emergency manoeuvring is guaranteed by a practical manual release system protected by a personalised key that is efficient under all working conditions.



FRONT BRACKET



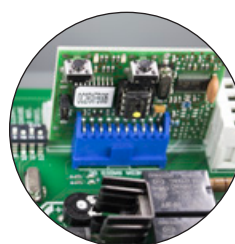
REAR BRACKET



SHOCKPROOF COVER



MANUAL RELEASE MECHANISM



ELECTRONIC PROGRAMMER WITH
OPTIONAL OPEN COLLECTOR CARD



CARDIN AUTOMATION SERIES BL

PRODUCT DESCRIPTION

ORDER NUMBER

ELECTROMECHANICAL RAM WITH A 24V MOTOR

Self-locking encoder controlled ram, factory set for fitting to the right hand side of the installation. The geared motor locks the gate leaf in the closed position.

ECU to be ordered separately T624.

Standard version for gates max. length 2m, max. weight 150kg.



BL TAGDX



ELECTROMECHANICAL RAM WITH A 24V MOTOR

Self-locking encoder controlled ram, factory set for fitting to the left hand side of the installation. The geared motor locks the gate leaf in the closed position.

ECU to be ordered separately T624.

Standard version for gates max. length 2m, max. weight 150kg.



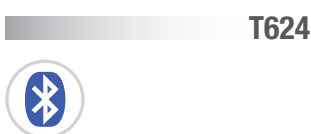
BL TAGSX



For the electric locks see page 159.

ELECTRONIC PROGRAMMER

for one or two 24V encoder-controlled motors complete with speed regulation (with ECU data exchange) and deceleration. Factory set for the insertion of an open collector receiver card.



T624



KIT BATTERY CHARGER + NiMH BATTERIES

Allows the 24V programmers to work during blackouts.



KBNIMH-T1

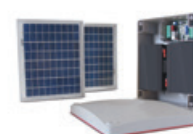


POWER SUPPLY KIT

Solar panels for use with all 24Vdc automation.



SUNPOWER



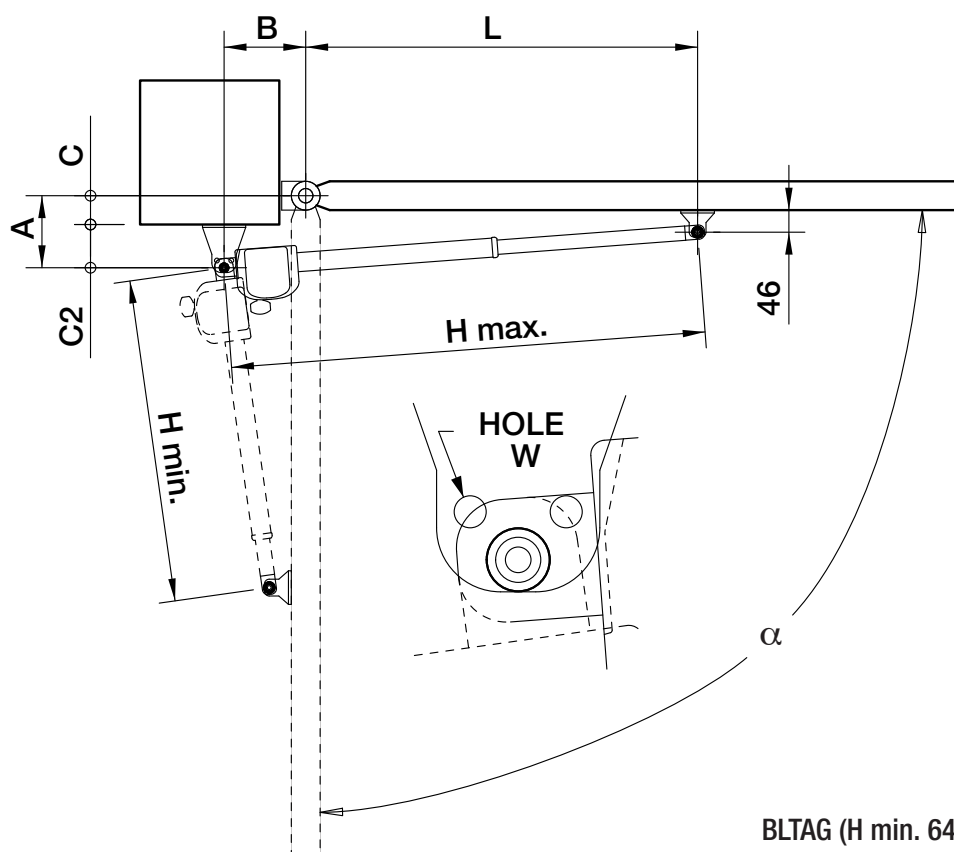
Compatible with the data exchange system between digital devices (smartphone, tablet, etc.) and the Cardin multifunctional control units. **See section 24V ECU INTERFACE DEVICES on page 178**





CARDIN AUTOMATION SERIES BL

LIMITS OF USE **BLTAG**



BLTAG (H min. 640 - H max. 985)

α°	A	B	C	C2	L
90	90	200	0	90	750
90	90-140	200	0 - 50	90	770
90	140-160	180	51 - 70	90	800
90	160-180	170	71 - 90	90	810
90	180-200	150	91-110	90	830
90	200-220	120	111-130	90	855
90	200-220	90	111-130	90	860
90	131-150 HOLE W	105 HOLE W	131-150	75 HOLE W	865
110	90	200	0	90	750
110	90-140	200	0 - 50	90	770
110	140-160	140	51 - 70	90	840
110	140-160	130	51 - 70	90	840

Note: for an optimised installation use the values highlighted in grey.

CARDIN AUTOMATION SERIES BL



RAM SPECIFICATIONS

Motor power supply
Nominal electrical input
Power input
Duty cycle
Opening time 90°
Maximum opening angle
Maximum thrust
Protection grade

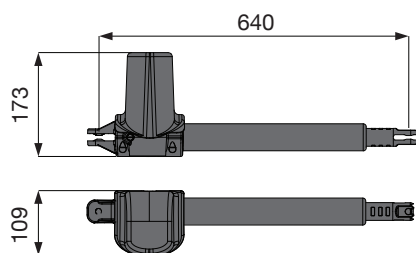
Vdc
A
W
%
s
°
N
IP

BL TAGDX

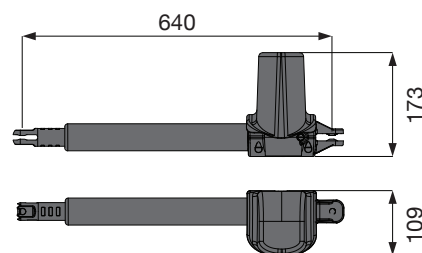
24
3
70
70
18
100
1500
44

BL TAGSX

24
3
70
70
18
100
1500
44



BL TAGSX (640 x 173 x 109)

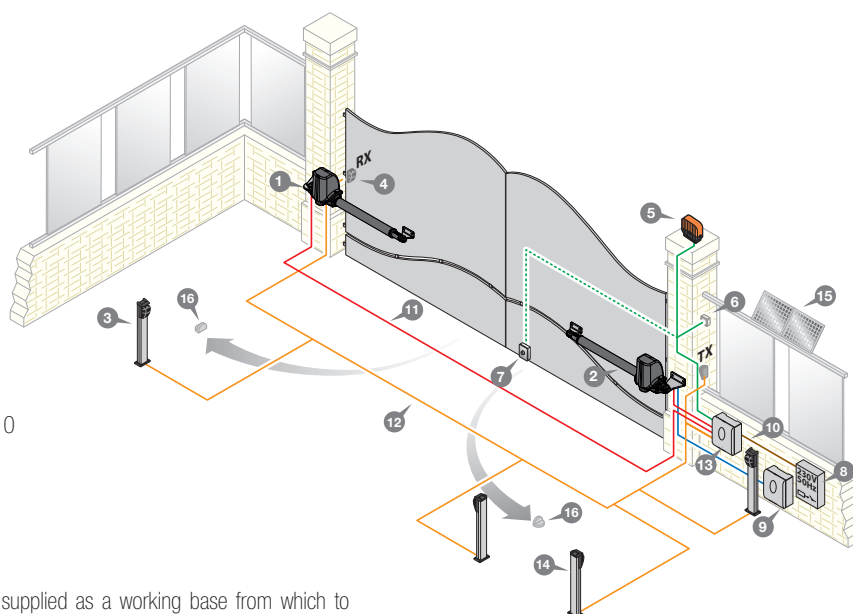


BL TAGDX (640 x 173 x 109)

INSTALLATION EXAMPLE

LEGEND

- 1 Geared motor (left)
- 2 Geared motor (right)
- 3 Internal photocells
- 4 External photocells
- 5 Warning lights with aerial
- 6 Mechanical selector switch
- 7 Electric lock
- 8 All pole circuit breaker
- 9 Sun Power
- 10 Mains cable 230Vac
- 11 Channelling for Cardin connection cable CABPC10
- 12 Channelling route for low voltage wires
- 13 Electronic programmer
- 14 Lateral protective photocells
- 15 Solar panels
- 16 Opening direction stop buffers



Attention: The drawing is purely indicative and is supplied as a working base from which to choose the Cardin electronic components making up the installation. This drawing therefore does not lay down any obligations regarding the execution of the installation.



HYDRAULIC AUTOMATION FOR SWING GATES



CARDIN AUTOMATION SERIES BLUES

These hydraulic rams with 230V motors, are easy to fit without requiring brickwork, offer excellent service with regard to the number of manoeuvres and are particularly suited for installations with columns of all dimensions.

The following models are available:

- self-locking; the geared motor locks the gate leaf in the closed position.
- reversible; an electric lock must be fitted to guarantee that the gate leaf locks in the closed position.

The units do not feature on board electronics and we advise you to use the Cardin electronic programmers T600.

Gate positioning is carried out with the help of mechanical travel limits. Safe and versatile thanks to the independent torque and speed adjustment together with hydraulic deceleration.

Constant performance over time and in any condition thanks to reduced wear&tear and the possibility to maintain the oil at the ideal temperature using HOT (optional).

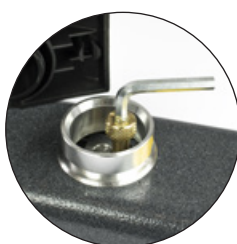
In case of blackouts, emergency manoeuvring is guaranteed (in the self-locking versions) by a practical manual release system protected by a personalised key that is efficient under all working conditions.



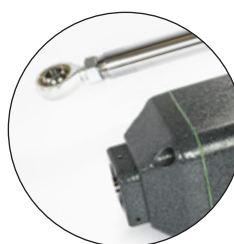
STAINLESS STEEL REAR BRACKET



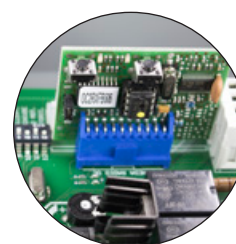
PERSONALISED KEY



MANUAL RELEASE USING AN ALLEN KEY



STAINLESS STEEL FRONT ATTACHMENT



ELECTRONIC PROGRAMMER WITH OPTIONAL OPEN COLLECTOR CARD



CARDIN AUTOMATION SERIES BL

HYDRAULIC RAM WITH A 230V MOTOR

Self-locking ram. The geared motor locks the gate leaf in the closed position.

ECU to be ordered separately T600.

Long version for gates max. length 4,5m, max. weight 500kg.



BLUES5



HYDRAULIC RAM WITH A 230V MOTOR

Reversible ram. An electric lock must be fitted to guarantee that the gate leaf locks in the closed position.

ECU to be ordered separately T600.

Long version for gates max. length 4,5m, max. weight 500kg.



BLUES5R



For the electric locks see page 159.

Compatible with the data exchange system between digital devices (smartphone, tablet, etc.) and the Cardin multifunctional control units.



See section 24V ECU INTERFACE DEVICES on page 178

CARDIN AUTOMATION SERIES BL



BRACKETS

front and rear brackets in galvanised steel.

BLSTABLUES



MECHANICAL GATE LOCK

for installations with two gates and a horizontal electric lock.

BLA



ELECTRONIC PROGRAMMER

for one or two 230V encoder-controlled motors complete with torque adjustment and deceleration. Factory set for the insertion of an open collector receiver card.

T600



ELECTRONIC HEATER

with a temperature probe for 230V motors.

HOT



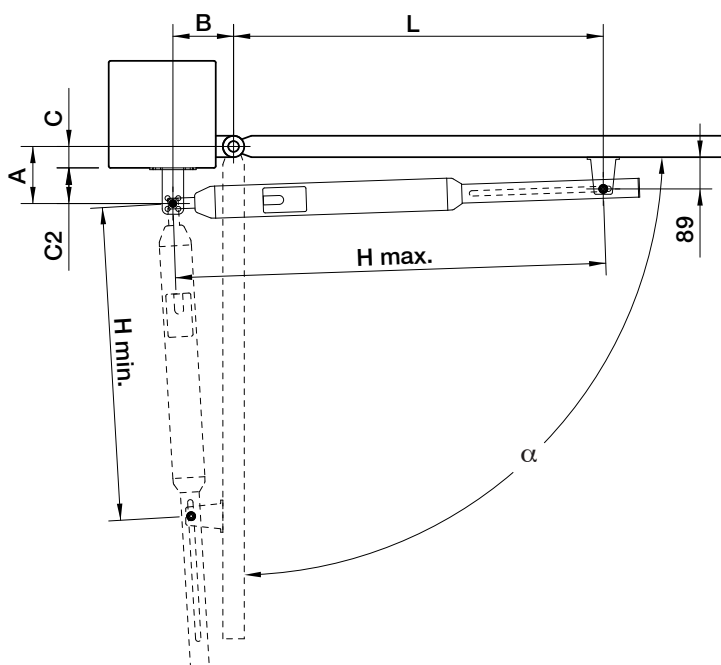
FLAGON OF OIL

5 litres.

TS30



LIMITS OF USE BLUES



BLUES5 - BLUES5R H min. 845 / H max. 1215)

α°	A	B	C	C2	L
90	170	180	0	170	1030
90	170	180	0 - 50	120	1030
90	170	180	51 - 70	100	1030
90	170	180	71 - 90	80	1030
90	170	80	71 - 90	170	1130
90	170	180	91-110	60	1030
90	170-190	180	111-130	60	1035
90	190-210	165	131-150	60	1050
90	210-230	145	151-170	60	1070
90	230-240	120	171-190	60	1090
110	160	165	0	160	1050
110	110-160	165	0 - 50	110	1050
110	140-160	165	51 - 70	90	1050
110	140-160	165	71 - 90	70	1050
110	140-160	125	71 - 90	40	1090
110	150-170	160	91 - 110	60	1055

Note: for an optimised installation use the values highlighted in grey.

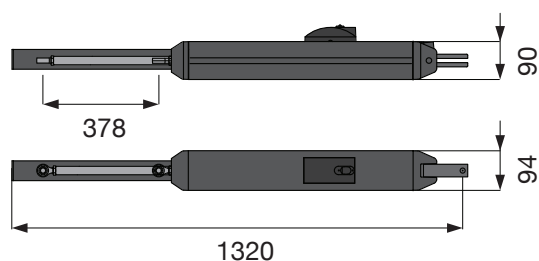


CARDIN AUTOMATION SERIES BL

OPERATOR ARM TECHNICAL SPECIFICATIONS

		BLUES5	BLUES5R
Motor power supply	Vac	230	230
Nominal electrical input	A	1,2	1,2
Power input	W	280	280
Duty cycle	%	70	70
Opening time 90°	s	30	30
Maximum opening angle	°	105	105
Thrust	N	3000	3000
Protection grade	IP	56	56

OVERALL DIMENSIONS



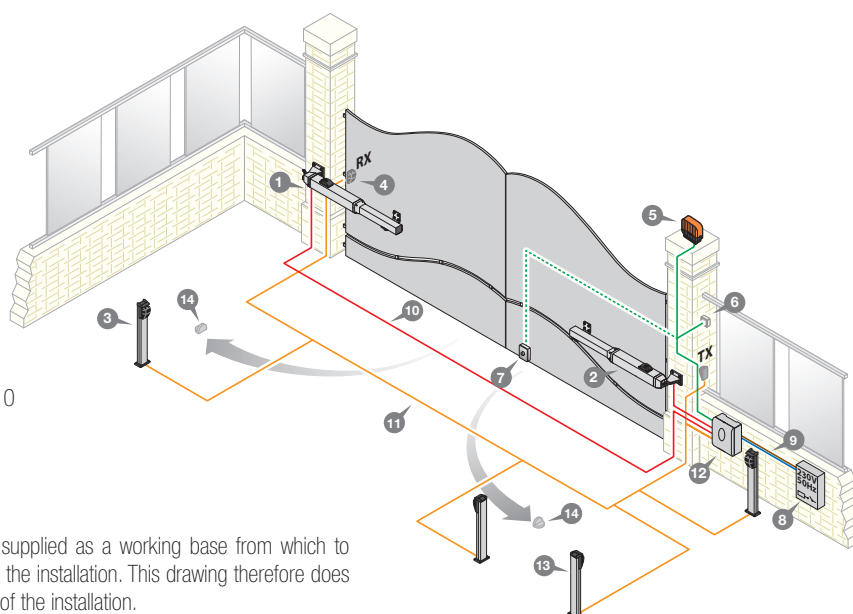
BLUES5 - BLUES5R (1320 x 90 x 94)

INSTALLATION EXAMPLE

LEGEND

- 1 Geared motor (left)
- 2 Geared motor (right)
- 3 Internal photocells
- 4 External photocells
- 5 Warning lights with aerial
- 6 Mechanical selector switch
- 7 Electric lock
- 8 All pole circuit breaker
- 9 Mains cable 230Vac
- 10 Channelling for Cardin connection cable CABPC10
- 11 Channelling route for low voltage wires
- 12 Electronic programmer
- 13 Lateral protective photocells
- 14 Opening direction stop buffers

Attention: The drawing is purely indicative and is supplied as a working base from which to choose the Cardin electronic components making up the installation. This drawing therefore does not lay down any obligations regarding the execution of the installation.





COMPLETE KIT FOR SWING GATES



KT-BLEGOS



PACKING
DIMENSIONS: 920 x 190 x 280
GROSS WEIGHT: 20 kg
ITEMS PER PALLET: 9 pcs

USE

Worm screw automation for gates with a maximum length of **2,5m**, maximum weight **200kg**.

2 SELF-LOCKING ELECTROMECHANICAL RAMS

with a 24V encoder-controlled motor.



ELECTRONIC PROGRAMMER

with a 433MHz FM receiver, battery charger and NiMH batteries, housed in an IP55 box with sealing gaskets and cable gland entry holes for the insertion of one Ø21 mm and two Ø16mm rigid tubes.
See page 168.

CC242EXTOPCB



2 4-CHANNEL TRANSMITTERS

433MHz FM ROLLING CODE.

TXQ504C4



PAIR OF PHOTOCELLS

in class 3 with adjustable lens, range 10m.

CDR999



LED WARNING LIGHT

24V - 230V with an in-built aerial

ICON



10-METRE WIRING CABLE

with end sleeves.

CABPC10



INTERNATIONAL WARNING SIGN

in PP, multi-language.

TARGA-INT



COMPLETE KIT FOR SWING GATES



KT-BLADE324



PACKING
DIMENSIONS: 920 x 190 x 280
GROSS WEIGHT: 24 kg
ITEMS PER PALLET: 9 pcs

USE

Worm screw automation for gates with a maximum length of **3m**, maximum weight **250kg**.

2 SELF-LOCKING ELECTROMECHANICAL RAMS

with a 24V encoder-controlled motor and mechanical travel limits.



BLADE324



ELECTRONIC PROGRAMMER

for two 24V encoder-controlled motors complete with speed regulation and deceleration.

T624



2-CHANNEL RECEIVER CARD

433MHz open collector, slot-in card.

S508 - S449 - S486 and EDGE versions are available on request.

RSQ5040C2



2 4-CHANNEL TRANSMITTERS

433MHz FM ROLLING CODE.

TXQ504C4



PAIR OF SURFACE-MOUNT PHOTOELECTRIC CELLS

with adjustable lens, range 25m.

VED0180



LED WARNING LIGHT

24V - 230V with an in-built aerial

ICON



INTERNATIONAL WARNING SIGN

in PP, multi-language.

TARGA-INT





COMPLETE KIT FOR SWING GATES



KT-BLADE3



PACKING
DIMENSIONS: 920 x 190 x 280
GROSS WEIGHT: 24 kg
ITEMS PER PALLET: 9 pcs

USE

Worm screw automation for gates with a maximum length of **3m**, maximum weight **250kg**.

2 SELF-LOCKING ELECTROMECHANICAL RAMS

with a 230V encoder-controlled motor and mechanical travel limits.



BLADE3



ELECTRONIC PROGRAMMER

for two 230V encoder-controlled motors complete with speed regulation and deceleration.

T600



2-CHANNEL RECEIVER CARD

433MHz open collector, slot-in card.

S508 - S449 - S486 and EDGE versions are available on request.

RSQ5040C2



2 4-CHANNEL TRANSMITTERS

433MHz FM ROLLING CODE.

TXQ504C4



PAIR OF SURFACE-MOUNT PHOTOELECTRIC CELLS

with adjustable lens, range 25m.

VED0180



LED WARNING LIGHT

24V - 230V with an in-built aerial

ICON



INTERNATIONAL WARNING SIGN

in PP, multi-language.

TARGA-INT



COMPLETE KIT FOR SWING GATES



KT-BLTAG



PACKING
DIMENSIONS: 720 x 260 x 330
GROSS WEIGHT: 12,5 kg
ITEMS PER PALLET: 16 pcs

USE

Worm screw automation for gates with a maximum length of **2m**, maximum weight **150kg**.

2 SELF-LOCKING ELECTROMECHANICAL RAMS

with a 24V encoder-controlled motor.



BL TAGDX

BL TAGSX



ELECTRONIC PROGRAMMER

for two 24V encoder-controlled motors complete with speed regulation and deceleration.

T624



2-CHANNEL RECEIVER CARD

433MHz open collector, slot-in card.

S508 - S449 - S486 and EDGE versions are available on request.

RSQ5040C2



2 4-CHANNEL TRANSMITTERS

433MHz FM ROLLING CODE.

TXQ504C4



PAIR OF SURFACE-MOUNT PHOTOELECTRIC CELLS

with adjustable lens, range 25m.

VED0180



LED WARNING LIGHT

24V - 230V with an in-built aerial

ICON



INTERNATIONAL WARNING SIGN

in PP, multi-language.

TARGA-INT

