



VICTORY FARM  
VictoryRides.org

# Keeping up with the Program!

## Victory Farm NEWS

Spring 2017

### Welcome Big Junior Brown

"Junior" (American Saddlebred) enjoyed a successful career as a performance, equitation and pleasure mount. Elyse Moore, pictured left, volunteers at Victory Farm. As she prepares to go to college, she hoped to semi-retire her beloved friend to a less-demanding, yet purpose-filled life. Knowing how our horses are loved and cared for at Victory Farm, she donated him to our program. Elyse, having been a volunteer, also understood the type of horse we need for our special riders.. Intelligence, patience, a protector's heart.. all of which describe Junior! He's been with us since December and already an invaluable part of our program. Thank you Elyse.

Pictured Right—Miss Julia Walsh with Shadow and Strawberry the mini-mule. Julia will be riding and showing Junior this year!

Julia is an honors student at Clover High School. She has ridden at Victory Farm since 2010 and is excited to be showing for the first time this year!

Julia has missed a lot of saddle-time over the years due to major surgeries — but we are all thrilled to have her back and ready to enter the showing on Junior.

Julia spoke at the Gala and posted a lovely video on the Victory Farm facebook page. She explains how riding has helped her overcome many of the challenges of Cerebral Palsy, both physically and emotionally! She says when she's not riding, she falls about 3 times a week—but when she is riding, her legs are strong and steady, her balance improved and she's able to move through her school days without falling!

Julia and Junior will be making their showing debut at the Dallas Summer Classic Horse Show, Dallas NC on May 27-28. I hope you'll be there to cheer her on !!!



Junior is already at home and loving his job as a therapy horse! Pictured here with Josephine.

You may also see Junior at the Regional Special Olympics Games on July 8th at Latta Plantation, Charlotte, NC with Elijah, Anna and Savannah!

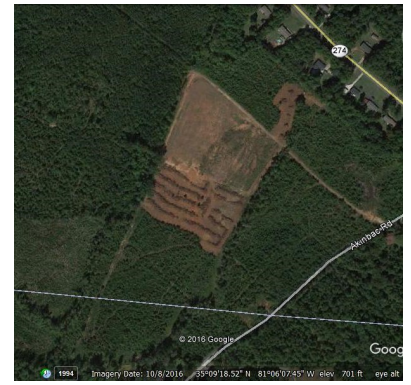




## Building our future!

The land is being cleared and  
pastures are growing green!

Can you help us provide a safe,  
consistent space for our riders  
and their families, our rescue  
horses and volunteers?



**YES!** I want to help Victory Farm with Goods, Services, Financial Support & Volunteers!!

We need everything for our new facility—fencing, gravel, electrical, carpentry, hardware .. Helping Hands!

Naming Opportunities Available! Honor a loved one with a permanent Memorial.

My Name is:

Phone #

Email

I can help by providing:



How can your donation go further?

Donate before April 18, 2017 to the Community Foundation  
"Run" for Victory Farm!

The Community Foundation *matches* a percentage of your  
donations! Up to \$10,000.00 !!

Go to [CFGaston.org](http://CFGaston.org) and click on the "Run" photograph—  
choose DONATE NOW and be sure to write in "Victory Farm"  
as YOUR charity! Or you can mail a check. These Dona-  
tions are Tax Deductible, too!

*Thank you for your kindness, generosity and support!*

*Y&V have touched and improved many lives .. Years into the future!*

**Victory Farm Inc.**

**501c3 Charitable Therapeutic & Adaptive Horsemanship**

**PO Box 6341 Gastonia NC 28056**

**Email [info@VictoryRides.org](mailto:info@VictoryRides.org) Phone 704-241-2270**



# ABOUT THE PROGRAM DIRECTOR

## DORY PELL



A third-generation professional horseman, she grew up in the horse show industry enjoying success at the National and World Championship levels.

In 1988, life took a dramatic turn. While on the way home from a show horse barn, she stopped at the grocery store. Before leaving the car, a family passed in front of the car with a small child in a wheelchair. From ‘nowhere’ she distinctly heard a voice say “YOU CAN HELP THAT CHILD”. Startled and confused, she thought “how can I help that child?” It made no sense to her at the time, without internet or training and exposure to the world of therapeutic horseback riding she tried to ignore the voice. And this was NOT *her* plan!

From there information began ‘dropping in her lap’. She began volunteering with a physical therapist who was giving therapeutic riding at her home in Monroe—then became certified as a Special Olympics Equestrian Coach. She ordered books and information, began learning and studying .. then went to train under the God-mother of therapeutic riding in the U.S., Linda McCowan of the Cheff Center.

Now she is one of the most experienced, rounded, trained and accredited instructors in the region. Holding certifications from PATH Professional Association of Therapeutic Horsemanship International (formerly NARHA), Certified Horsemanship Association Instructor of Riders with Disabilities: Cognitive and Instructor of Riders with Disabilities: Physical, Safety, Standards & Horsemanship, and Special Olympics Equestrian Coach.

From her work with the special needs community to horse rescue, in February of 2017, she was honored to be awarded the Barbara Blackwelder Humanitarian Award by one of the largest breed associations in the country—the American Saddlebred Association of the Carolinas. (pictured above)



*Ribbons of Service*

*Approved Charity*



**VICTORY FARM**  
VictoryRides.org

Have you heard about our “Ride for the Cause”? Any YOUTH rider can now support Victory Farm every time you enter the show ring! Not based on winning—but on your heart!

Just get sponsors to pledge a donation for each show you enter! It’s simple and it will make a difference for many special needs riders and rescue horses!

Contact us for more information—and Thank You!



& Adaptive Horsemanship

# VICTORY FARM

VictoryRides.org

**P.O. Box 6341**

**Gastonia, NC 28056**

**Facebook: Victory Farm Inc.**

**Email: Info@VictoryRides.org**

**Call: 704-241-2270**

## Memberships & Certifications include::

- **PATH (formerly NARHA) Professional Association of Therapeutic Horsemanship International Instructor**
- **CHA Instructor of Riders with Disabilities: Cognitive**
- **CHA Instructor of Riders with Disabilities: Physical**
- **Standards/Safety & Horsemanship Instructor**
- **Certified Special Olympics Equestrian Coach**
- **Community Foundation of Gaston County**
- **Gaston County United Way Community Choice Partner**
- **Red Cross Pediatric & Adult First Aid/CPR/AED**
- **North Carolina Horse Council**
- **American Saddlehorse Association**
- **American Saddlebred Association of the Carolinas**



A 501c3 Charity

Your generous contributions  
are tax deductible



# VICTORY FARM RIDE for the CAUSE!

You can ride for a cause and benefit the horses and riders of VICTORY FARM in our community!

1. Get sponsorships for each horse show you enter.  
Ex. \$5 per show, 7 shows for 2017 Donor pays \$35
2. Be a PROUD sponsor of VICTORY FARM. Know that each time you show you are helping VICTORY FARM horses and riders.
3. Checks are made payable to VICTORY FARM & we will issue tax deductible receipts. Victory Farm is a 501c3 charity.
4. When your barn has \$1500 in donations you will receive a pizza party from VICTORY FARM!
5. Each exhibitor that is RIDING for the CAUSE will receive a FREE T-Shirt!
6. First, Second and Third place for top fundraising will receive horse show ribbons at the pizza party in additional recognition of your efforts to support this great program!

*Thank you for supporting us!*





**VICTORY FARM**  
VictoryRides.org

# **VICTORY FARM**

## **Therapeutic & Adaptive Horsemanship**

### ***RIDE for the Cause!***



**VICTORY FARM**  
VictoryRides.org

Rider Name: \_\_\_\_\_ Address: \_\_\_\_\_  
Phone: \_\_\_\_\_ Rider Email: \_\_\_\_\_  
Barn: \_\_\_\_\_ Instructor: \_\_\_\_\_

My FUNDRAISING GOAL for 2017 is \_\_\_\_\_! I plan to show in # \_\_\_\_\_ Shows!

I agree to pay the below listed amount per show, class or division completed. Or I choose to contribute a flat donation. I agree to make my check payable to VICTORY FARM (a 501(c)(3) organization). VICTORY FARM will provide a tax deductible receipt to all donors. \*Minimum \$5 per show or class.

DONORS NAME	DONORS EMAIL ADDRESS	\$ amount pledged per show \$10.00 (# of shows above)(5 shows)	Flat \$ amount donated	TOTAL
EX. Jane Smith	<a href="mailto:janesmith@yahoo.com">janesmith@yahoo.com</a>			\$50.00
EX. Jane Smith	<a href="mailto:janesmith@yahoo.com">janesmith@yahoo.com</a>		\$75.00	\$75.00