

User Guide

Please read the product manual carefully before use. Use under the guidance of a therapist.

- 1. Usage Instructions:** Follow the usage requirements and select the irradiation area according to the reference chart and human body acupoint diagram in this manual.
- 2. Irradiation Position:** Apply the device directly to the selected area, ensuring the irradiation surface matches the area. For best results, fully expose the area to be treated, avoiding drafts. Keep the irradiated area warm and wear appropriate clothing after irradiation.
- 3. Distance:** Maintain a comfortable distance where the patient feels warmth (skin surface temperature around 38-40°C), approximately 10-20 cm from the device.
- 4. Frequency:** Typically, use the device 1-2 times per day (more if needed). Each session should last 30-40 minutes. Prolong the duration for deep-seated conditions as needed. Usually, one treatment course lasts about seven days, generally requiring 3-5 courses. Allow intervals between treatments.
- 5. Medication Use:** The device can be used alongside medications (especially topical ones) to enhance drug absorption and efficacy, but observe for any adverse reactions.
- 6. Normal Reactions:** It is common to feel heat, itching, or dizziness during use. These are normal reactions but observe and avoid any adverse effects.
- 7. Special Care Areas:** Be cautious when using the device on sensitive areas, ensuring no more than 20 minutes of exposure.
- 8. Special Populations:** For the elderly, children, and individuals with reduced local temperature sensitivity, ensure someone is present to assist during use. Handle with care to avoid injury.
- 9. Photosensitivity and Specific Conditions:** Patients with photosensitivity or specific conditions should use the device under physician supervision.
- 10. Effectiveness:** If no significant improvement is noticed after continuous use, evaluate the correct application of intensity and duration.
- 11. Consultation:** If you have any questions about the device, consult a doctor immediately.

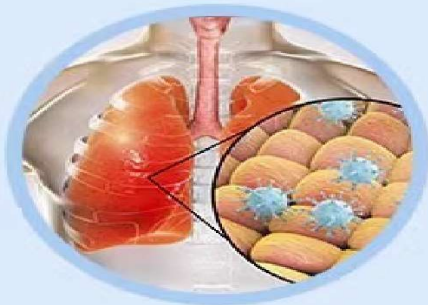
Warning: Do not use on individuals with hemorrhagic tendencies, active tuberculosis, severe arteriosclerosis, malignant tumors, high fever, or other critical conditions. Avoid use on pregnant women and those with implanted medical devices. Do not use on areas with severe burns or swollen skin. Avoid close use near sensitive areas: eyes, burns, swollen areas.

ELECTROMAGNETIC WAVE RADIATION THERAPY DEVICE WS-301

Registration Number: 20162091067

As Zhoulin states:

The device has the following main auxiliary therapeutic functions:



Bronchitis



Chronic Gastritis



Chronic (PID)
Pelvic inflammatory disease



Frostbite



Joint Pain



Shingles



When Poor
Wound Healing



Promote
Blood Circulation



Improve
nervous system function