



adidas
BASEBALL



DIAMOND KING ELITE FULL BUTTON JERSEY

M MSRP: **\$50**
Y MSRP: **\$40**
 RETAIL INTRO: **At Once**

SIZES: **S-3XL**
 SIZES: **S-XL**
 RETAIL EXIT: **7/31/21**

- 100% Polyester Pique body
- 100% Polyester Mesh back and side inserts
- PRO Fit - An articulated and tailored cut for optimal fit and performance

- Full button front with slight drop tail
- Contrast embroidered adidas logo at left chest
- Shipped blank without decoration

AEROREADY PRO FIT INDY



AVAILABLE COLORS:



M CY2102
Y CY1996
 Light Onix

M CY2101
Y CY1995
 White

DIAMOND KING ELITE 2-BUTTON JERSEY

M MSRP: **\$35**
Y MSRP: **\$25**
 RETAIL INTRO: **At Once**

SIZES: **S-3XL**
 SIZES: **S-XL**
 RETAIL EXIT: **7/31/21**

- 100% Polyester Mesh jersey
- PRO Fit - An articulated and tailored cut for optimal fit and performance
- 2-Button design with slight drop tail

- Contrast embroidered adidas logo at left chest
- Shipped blank without decoration

AEROREADY PRO FIT INDY



AVAILABLE COLORS:



M CY2106
Y CY2096
 Power Red/White

M CY2104
Y CY1986
 Black/White

M CY2107
Y CY1984
 Collegiate Navy/White

M CY2108
Y CY1987
 Collegiate Royal/White

M CY2103
Y CY1989
 Collegiate Purple/White



M CY2111
Y CY1988
 Maroon/White

M CY2109
Y CY1985
 Dark Green/White

M CY2105
Y CY1983
 White/Onix



DIAMOND KING ELITE OPEN HEM PANT

M MSRP: **\$50**
Y MSRP: **\$40**
 RETAIL INTRO: **At Once**

SIZES: **S-3XL**
 SIZES: **S-XL**
 RETAIL EXIT: **7/31/21**

- 100% Polyester Pique body
- 100% Polyester Mesh gusset
- PRO Fit - An articulated and tailored cut for optimal fit and performance
- Traditional tunneled belt loop construction

- Double knee reinforcement
- Contrast embroidered adidas logo on back left pocket
- **M** Inseam: 34" Size L-4XL
- **Y** Inseam: 28" Size M-L

AEROREADY PRO FIT INDY



AVAILABLE COLORS:



M CY2098
Y CY1992
 Light Onix



M CY2097
Y CY1991
 White

DIAMOND KING ELITE KNICKER PANT

M MSRP: **\$50**
Y MSRP: **\$40**
 RETAIL INTRO: **At Once**

SIZES: **S-3XL**
 SIZES: **S-XL**
 RETAIL EXIT: **7/31/21**

- 100% Polyester Pique body
- 100% Polyester Mesh gusset
- PRO Fit - An articulated and tailored cut for optimal fit and performance
- Traditional tunneled belt loop construction

- Double knee reinforcement
- Contrast embroidered adidas logo on back left pocket
- **M** Inseam: 20" Size L-4XL
- **Y** Inseam: 15" Size M-XL

AEROREADY PRO FIT INDY



AVAILABLE COLORS:



M CY2100
Y CY1993
 Light Onix



M CY2099
Y CY1994
 White



2021 DIAMOND KING ELITE BRAID PROGRAM

15 DAY DELIVERY

ORDER ENTRY VIA MITEAM.COM

STANDARD MITEAM DISCOUNTS APPLY

FULL BUTTON JERSEY

BLANK GARMENT INFO ON PAGE 5

STEP #1 SELECT BODY COLOR



Light Onix

White

STEP #2 SELECT 1 BRAID OPTION



PLACKET & ARM HOLES
(+\$14)



ARM HOLES ONLY
(+\$7)



PLACKET ONLY
(+\$7)



INNER NECK ONLY
(+\$7)



INNER NECK & ARM HOLES
(+\$7)

PANT

BLANK GARMENT INFO ON PAGE 6

STEP #1 SELECT BODY COLOR



Light Onix

White

STEP #2 SELECT PANT CUT



OPEN HEM
(+\$8)



KNICKER
(+\$8)

COLOR OPTIONS

STEP #3 SELECT COLOR COMBINATION OR SINGLE COLOR

3/8" COLOR COMBINATION



Black (095A)
Power Red (31F0)



Collegiate Navy (54F0)
Power Red (31F0)



Collegiate Navy (54F0)
White (001A)



Collegiate Navy (54F0)
Collegiate Gold (06F0)



Collegiate Royal (55F0)
Power Red (31F0)



Maroon (48F0)
White (001A)



Collegiate Royal (55F0)
White (001A)



Collegiate Royal (55F0)
Collegiate Orange (34F0)



Power Red (31F0)
Black (095A)



Power Red (31F0)
White (001A)



Collegiate Gold (06F0)
Black (095A)



Collegiate Purple (43F0)
White (001A)

1/8" SINGLE COLOR



Power Red (31F0)



Black (095A)



Collegiate Navy (54F0)



Collegiate Royal (55F0)



Collegiate Purple (43F0)



Maroon (48F0)



Light Blue (57F0)



Dark Green (A0QE)



Sand (04F0)



Collegiate Gold (06F0)



Collegiate Orange (34F0)



Light Onix (150A)



White (001A)

miadidas



CREATOR SHORT SLEEVE TEE ^M

MSRP: **\$25**
 RETAIL INTRO: **At Once**

SIZES: **XS-4XL**
 RETAIL EXIT: **5/31/22**

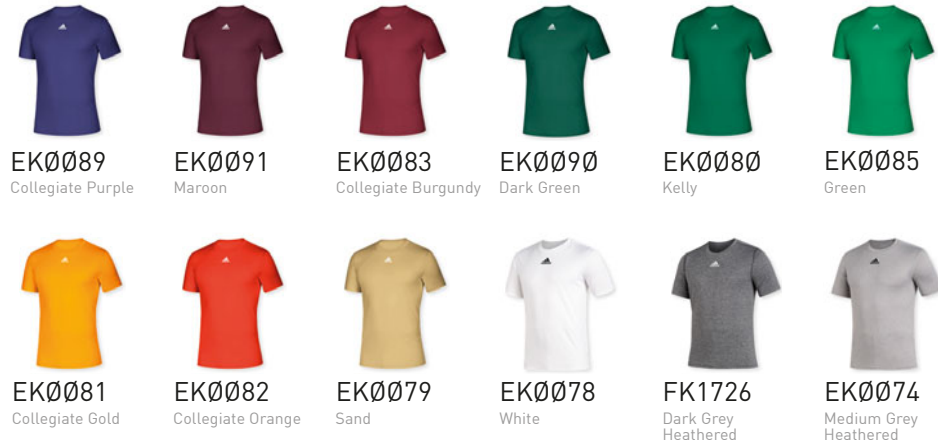
- 100% Polyester
- Moisture-wicking performance material
- Set-in sleeves

- Contrast screen print adidas logo
- Shipped blank without decoration

AEROREADY **HS** **REGULAR FIT** **INDY**



AVAILABLE COLORS:



CLIMA TECH TEE ^Y

MSRP: **\$15**
 RETAIL INTRO: **At Once**

SIZES: **S-XL**
 RETAIL EXIT: **5/31/21**

- 100% Polyester
- Set-in sleeve construction
- Contrast heat transfer adidas logo at left sleeve
- Shipped blank without decoration

AEROREADY **HS** **REGULAR FIT** **INDY**



AVAILABLE COLORS:



miadidas

MIKING 2.0 JERSEY ^M

ARTICLE # **CY2047** MSRP: **\$70**
FULL BUTTON

ARTICLE # **CY2048** MSRP: **\$65**
2-BUTTON

ARTICLE # **CY2049** MSRP: **\$60**
V-NECK

- 100% Polyester Mesh jersey
- PRO Fit - An articulated and tailored cut for optimal fit and performance
- Slight drop tail
- Contrast embroidered adidas logo at left chest
- Accommodates full team customization up to 4" across front
- Tackle twill decoration

SIZES: **S-4XL**

AVAILABLE: **At Once** AVAILABLE UNTIL: **7/31/21**

AEROREADY   **PRO FIT** **miadidas**



MIKING 2.0 PANT ^M

ARTICLE # **CY2050** MSRP: **\$70**
OPEN HEM

- Inseam: 32" Size L-4XL

ARTICLE # **CY2051** MSRP: **\$70**
KNICKER

- Inseam: 20" Size L-4XL

- 100% Polyester Pique body
- 100% Polyester Mesh gusset and side inserts
- PRO Fit - An articulated and tailored cut for optimal fit and performance
- 100% Brass zipper
- Traditional tunneled belt loop construction
- Double knee reinforcement
- Contrast embroidered adidas logo on back left pocket
- Embroidered decoration

SIZES: **S-4XL**

AVAILABLE: **At Once** AVAILABLE UNTIL: **7/31/21**

AEROREADY   **PRO FIT** **miadidas**

CUSTOMIZATION OPTIONS:

JERSEY:

- Jersey Style
- Base Color
- Sleeve Hem Color
- Sleeve Color
- adidas Logo Color
- Lower Side Panel Front Color
- Lower Side Panel Back Color
- Underarm Color

















PANT:

- Base Color
- adidas Logo Color
- Side Insert Front Color
- Side Insert Back Color

ADDITIONAL PRICING:

Tackle Twill Player Name on Jersey Back	\$28
Tackle Twill Team Name on Jersey Front	\$28
Tackle Twill Number on Jersey Front	\$18
Tackle Twill Number on Jersey Back	\$18
Embroidered Team Crest on Jersey Front	\$16
Embroidered Team Crest on Pant	\$16

COLOR OPTIONS:

 WHITE (001A)	 COLLEGIATE PURPLE (43F0)
 POWER RED (31F0)	 COLLEGIATE ORANGE (34F0)
 BLACK (095A)	 ONIX (A79H)
 COLLEGIATE ROYAL (55F0)	 COLLEGIATE GOLD (04F0)
 COLLEGIATE NAVY (54F0)	 SAND (04F0)
 DARK GREEN (A0QE)	 INTENSE PINK (A3MH)
 MAROON (48F0)	 LIGHT BLUE (57F0)
 COLLEGIATE BURGUNDY (A0RP)	 LIGHT ONIX (150A)

FONT OPTIONS - ALPHABET:

FULL BLOCK: **ABCDEFGHIJKLMN OPQRSTUVWXYZ**

LOUISVILLE: **ABCDEFGHIJKLMN OPQRSTUVWXYZ**

INVADER: **ABCDEFGHIJKLMN OPQRSTUVWXYZ**

CUSTOMIZE YOUR LOOK ONLINE AT MITEAM.COM





MISTREAK 2.0 JERSEY

ARTICLE # FULL-BUTTON	M DY6888	MSRP: \$90
	Y DY6884	MSRP: \$70
ARTICLE # 2-BUTTON	M DY6889	MSRP: \$85
	Y DY6885	MSRP: \$65
ARTICLE # V-NECK	M DY6881	MSRP: \$85
	Y DY6886	MSRP: \$65

- 100% Polyester Mesh jersey
- PRO Fit - An articulated and tailored cut for optimal fit and performance
- Contrast adidas logo at left chest
- Fully Sublimated
- Accommodates full team customization up to 4" across

M SIZES: S-4XL **Y** SIZES: S-XL
 AVAILABLE: 8/1/19 AVAILABLE UNTIL: 7/31/22



MISTREAK 2.0 PANT

ARTICLE # OPEN-HEM	M DY6882	MSRP: \$90
	Y DY6887	MSRP: \$70

- **M** Inseam: 34" Size L-4XL
- **Y** Inseam: 28" Size M-L

ARTICLE # KNICKER	M DY6883	MSRP: \$90
	Y DY6890	MSRP: \$70

- **M** Inseam: 20" Size L-4XL
- **Y** Inseam: 15" Size M-XL
- 100% Polyester Pique body
- 100% Polyester Mesh inserts
- PRO Fit - An articulated and tailored cut for optimal fit and performance
- Traditional tunneled belt loop construction
- Double knee reinforcement
- Contrast adidas logo on back left pocket
- Fully sublimated

M SIZES: S-4XL **Y** SIZES: S-XL
 AVAILABLE: 8/1/19 AVAILABLE UNTIL: 7/31/22



CUSTOMIZATION OPTIONS:

- | | |
|--|--|
| JERSEY: | PANT: |
| <ul style="list-style-type: none"> • Jersey Style • Base Color • Sleeve Color • adidas Logo Color • Front Side Stripe Color • Middle Side Stripe Color • Back Side Stripe Color | <ul style="list-style-type: none"> • Pant Style • Body Color (White or Light Onix) • adidas Logo Color • Front Side Stripe Color • Middle Side Stripe Color • Back Side Stripe Color |

FONT OPTIONS:

FULL BLOCK
ABCDEFGHIJKLMN OPQRSTU VWXYZ

LOUISVILLE
ABCDEFGHIJKLMN OPQRSTU VWXYZ

INVADER
ABCDEFGHIJKLMN OPQRSTU VWXYZ

SUBLIMATION COLOR OPTIONS:

	WHITE (001A)		TEAM SAND (04F0)
	TEAM NAVY BLUE (54F0)		TEAM GREEN (3415)
	TEAM ROYAL BLUE (55F0)		TEAM DARK GREEN (A00E)
	TEAM LIGHT BLUE (57F0)		TEAM COL. PURPLE (43F0)
	TEAM MAROON (48F0)		TEAM REAL SHOCK (ADEF)
	TEAM COL. BURGUNDY (A0RP)		TEAM LIGHT GREY (ADFE)
	TEAM POWER RED (31F0)		TEAM MID GREY (ADFC)
	TEAM ORANGE (34F0)		TEAM DARK GREY (ADFD)
	TEAM COL. GOLD (06F0)		
	TEAM YELLOW (1008)		

CUSTOMIZE YOUR LOOK ONLINE AT MITEAM.COM





custom

DESIGNATED HITTER PROGRAM

REVISED



DESIGNATED HITTER JERSEY

CUT AND SEW

M Faux Full Button - AD02415M

M 2-Button Henley - AD02414M

1-COLOR TWILL PRICING

SIZES: **XS-5XL** MSRP: \$110

2-COLOR TWILL PRICING

SIZES: **XS-5XL** MSRP: \$125

Y Faux Full Button - AD02415Y

Y 2-Button Henley - AD02414Y

1-COLOR TWILL PRICING

SIZES: **XS-XL** MSRP: \$100

2-COLOR TWILL PRICING

SIZES: **XS-XL** MSRP: \$115

- Front - 15 Cloth
- Back and Sleeves - 87 Cloth

MSRP INCLUDES:

- 1 or 2-Color Twill Team Name or Interlocking Left Chest letters"
- 1 or 2-Color Twill Player Numbers (Front & Back)

PLAYER NAME PRICING:

- Full Block Single Color - Additional: \$24.50



DESIGNATED HITTER PANT

CUT AND SEW

M Open Hem - AD02416M

M Knicker - AD02416M

SIZES: **XS-5XL** MSRP: \$90

Y Open Hem - AD02416Y

Y Knicker - AD02416Y

SIZES: **S-XL** MSRP: \$80

- Pant - 15 Cloth
- Gusset - 87 Cloth
- Open Hem with Tailored Cut: **M** Inseam: 34"
- Knee Length with Elastic Cinch: **Y** Inseam: 28"
- All Available +/-2"

MSRP INCLUDES:

- 1/8" Braid on sides of pants (1-Color)



CUSTOMIZATION OPTIONS:

JERSEY:

- Jersey Style
- Body Color
- Sleeve Color
- Braid Color
- adidas Logo Color
- Team Name
- Player Name
- Player Number
- +2" Length on Body

PANT:

- Pant Style
- Body Color
- Braid Color

FONT OPTIONS - ALPHABET:

FULL BLOCK

ABCDEFGHIJKLMN OPQRSTUVWXYZ

FALCON

ABCDEFGHIJKLMN OPQRSTUVWXYZ

BRUSH SCRIPT

ABCDEFGHIJKLMN OPQRSTUVWXYZ
abcdefghijklmopqrstuvwxyz

LOUISVILLE

ABCDEFGHIJKLMN OPQRSTUVWXYZ

KNIGHTS

ABCDEFGHIJKLMN OPOR

ARC STYLE

COLLEGIATE STRAIGHT
INTERLOCKING
COLLEGIATE VERTICAL ARC

FONT OPTIONS - NUMERIC:

PRO FULL BLOCK

0123456789

FALCON

0123456789

TIMES BOLD

0123456789

KNIGHTS

0123456789

LOUISVILLE

0123456789

COLOR OPTIONS:

	WHITE (WHITE C)		TEAM COL. BURGUNDY (ADEZ)
	TEAM POWER RED (ADF1)		TEAM COL. PURPLE (ADF2)
	BLACK (433C)		TEAM ORANGE (ADCY)
	TEAM NAVY BLUE (AD8Q)		TEAM MID GREY (COOL GREY 8)
	TEAM ROYAL BLUE (AD8R)		TEAM ONIX (ADFY)
	TEAM GREEN (ADCZ)		TEAM COL. GOLD (ADF6)
	TEAM DARK GREEN (AD8T)		TEAM SAND (ADF4)
	TEAM MAROON (ADEY)		TEAM LIGHT BLUE (ADA3)

GO TO UNIFORMS.ADICUSTOM.COM TO CREATE YOUR LOOK



custom



A1 PRO JERSEY

CUT AND SEW

M Faux Full Button - AD02420M-PRO

M 2-Button - AD02409M-PRO

SIZES: 36-60

MSRP: \$95
Blank

- Front - 28, 87, or 15 Cloth
- Back and Sleeves - 87 Cloth



JERSEY CUT OPTIONS:



FAUX FULL FRONT BUTTON



2-BUTTON

CUSTOMIZATION OPTIONS:

- Jersey Style
- Body Color
- Binding Color
- Sleeve Color
- Braid Option
- +2" length
- adidas Logo Color
- Team Name
- Team Logo
- Player Number
- Player Name

OPTION PRICING

TWILL

1-Color Twill- Team Name & Front and Back Numbers	\$27.50
2-Color Twill- Team Name & Front and Back Numbers	\$48.50
1-Color Twill- Team Name, Front/Back Numbers, Player Name	\$52.00
2-Color Twill- Team Name, Front/Back 1-Color Player Name	\$73.00

SUBLIMATED PATCHES

Team Name -on Plate	\$20.00
Team Name - Individual Letters	\$30.00
Numbers Front and Back	\$38.00

A1 PRO PANT

CUT AND SEW

M AD02410M-PRO

SIZES: 26-52

MSRP: \$135
Blank

- Body - 28 Cloth or 15 Cloth
- Gusset - 87 Cloth



PANT CUT OPTIONS:



KL-PRO

Knee length
Pro Fit cut with
elastic cinch
Inseam: 20" (+/-2")



AL-PRO

Ankle length
cut with
elastic cinch
Inseam: 32" (+/-2")



OH-PRO

Open Hem Pro
Fit pant
Inseam: 34" (+/-2")

*Inseams available +/-2 for all styles

CUSTOMIZATION OPTIONS:

- Pant Cut
- Body Color
- adidas Logo Color
- Braid Option
- Team Logo on Hip or Back Belt Loop

BRAID/OTHER

Side Leg	\$11.50	
Embroidery on Hip or Belt	Small	\$11.00
	Medium	\$14.00
	Large	\$16.50

*No Upcharge on 28 Cloth

*See reference section for additional options and pricing.

GO TO [UNIFORMS.ADICUSTOM.COM](https://www.uniforms.adicustom.com) TO CREATE YOUR LOOK



custom



REVISED

ICON PRO JERSEY

CUT AND SEW

ADØ2425M-PRO

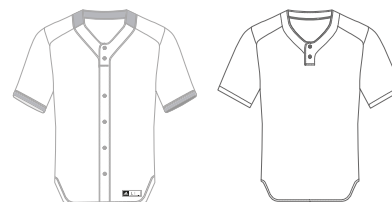
SIZES: 36-60

MSRP: \$90
Blank

- Cloth Options: Ø8, 15, 27, 28, 87
- Underarm Gussets - 87 Cloth

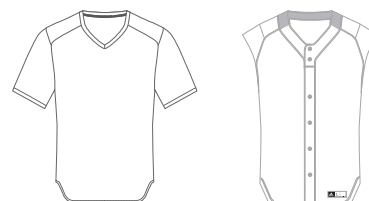


JERSEY CUT OPTIONS:



FULL FRONT BUTTON

2-BUTTON



V-NECK

SLEEVELESS

CUSTOMIZATION OPTIONS:

- Jersey Style
- Body Color
- Sleeve Color
- Underarm Gusset
- Braid Option
- adidas Logo Color
- Team Name
- Team Logo
- Player Number
- Player Name
- +2" Length on Body

OPTION PRICING

TWILL

1-Color Twill- Team Name & Front and Back Numbers	\$27.50
2-Color Twill- Team Name & Front and Back Numbers	\$48.50
1-Color Twill- Team Name, Front/Back Numbers, Player Name	\$52.00
2-Color Twill- Team Name, Front/Back 1-Color Player Name	\$73.00

SUBLIMATED PATCHES

Team Name -on Plate	\$20.00
Team Name - Individual Letters	\$30.00
Numbers Front and Back	\$38.00

ICON PRO PANT

CUT AND SEW

ADØ2426M-PRO

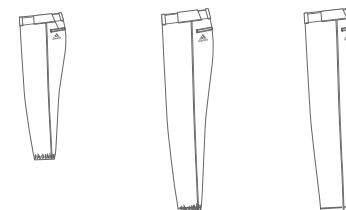
SIZES: 26-52

MSRP: \$115
Blank

- Cloth Options: Ø8, 15, 27, 28
- Gusset - 87 Cloth



PANT CUT OPTIONS:



KL-PRO

Knee length
Pro Fit cut with
elastic cinch
Inseam: 20" (+/-2")

AL-PRO

Ankle length
cut with
elastic cinch
Inseam: 32" (+/-2")

OH-PRO

Open Hem Pro
Fit pant
Inseam: 34" (+/-2")

CUSTOMIZATION OPTIONS:

- Pant Cut
- Body Color
- Braid Option
- adidas Logo Color
- Team Logo on Hip/Back Belt Loop

BRAID/OTHER

Side Leg	\$11.50	
Embroidery on Hip or Belt	Small	\$11.00
	Medium	\$14.00
	Large	\$16.50

*No Upcharge on 28 Cloth

*See reference section for additional options and pricing.

GO TO UNIFORMS.ADICUSTOM.COM TO CREATE YOUR LOOK



custom



REVISED

JOBU PRO HENLEY

CUT AND SEW

M AD02381M-PRO

SIZES: **36-60** MSRP: **\$95 Blank**

- Cloth Options: 08, 15, 27, 28, 87
- 28 CLOTH UPCHARGE \$8.00

Y AD02381B

SIZES: **XS-XL** MSRP: **\$75 Blank**

- Cloth Options: 08, 15, 27, 28, 87
- 28 CLOTH UPCHARGE \$8.00



JERSEY CUT OPTIONS:



2-BUTTON

CUSTOMIZATION OPTIONS:

- Body Color
- Accent Color
- adidas Logo Color
- Team Name
- Player Name
- Player Number
- +2" Length on Body

OPTION PRICING

TWILL

1-Color Twill- Team Name & Front and Back Numbers	\$27.50
2-Color Twill- Team Name & Front and Back Numbers	\$48.50
1-Color Twill- Team Name, Front/Back Numbers, Player Name	\$52.00
2-Color Twill- Team Name, Front/Back 1-Color Player Name	\$73.00

SUBLIMATED PATCHES

Team Name -on Plate	\$20.00
Team Name - Individual Letters	\$30.00
Numbers Front and Back	\$38.00

DIAMOND PRO PANT

CUT AND SEW

M AD02384M-PRO

SIZES: **26-52** MSRP: **\$100 Blank**

- Cloth Options: 08, 15, 27, 28
- 28 CLOTH UPCHARGE \$8.00

Y AD02384B

SIZES: **XS-XL** MSRP: **\$85 Blank**

- Cloth Options: 08, 15, 27, 28
- 28 CLOTH UPCHARGE \$8.00



PANT CUT OPTIONS:



KL-PRO

Knee length
Pro Fit cut with
elastic cinch
Inseam: 20" (+/-2")
Inseam: 15" (+/-2")



AL-PRO

Ankle length
cut with
elastic cinch
Inseam: 32" (+/-2")
Inseam: 25" (+/-2")



OH-PRO

Open Hem Pro
Fit pant
Inseam: 34" (+/-2")
Inseam: 28" (+/-2")

CUSTOMIZATION OPTIONS:

- Pant Cut
- Body Color
- Accent Color
- adidas Logo Color
- Team Logo on Hip/Back Belt Loop

BRAID / OTHER

Side Leg	\$11.50
Sleeve Braid	\$8.50

*See reference section for additional options and pricing.

Pant Embellishment	Small	\$11.00
	Medium	\$14.00
	Large	\$16.50

GO TO UNIFORMS.ADICUSTOM.COM TO CREATE YOUR LOOK



custom



NO HITTER PRO JERSEY

CUT AND SEW

M ADØ1988M-PRO

SIZES: **36-60** MSRP: **\$95 Blank**

- Cloth Options: Ø8, 15, 27, 28, 87
- *28 CLOTH UPCHARGE \$8.00

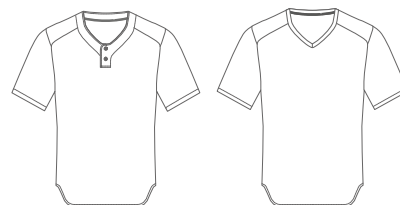
Y ADØ1988B

SIZES: **XS-XL** MSRP: **\$75 Blank**

- Cloth Options: Ø8, 15, 27, 28, 87
- *28 CLOTH UPCHARGE \$8.00



JERSEY CUT OPTIONS:



2-BUTTON

V-NECK

CUSTOMIZATION OPTIONS:

- Jersey Style
- Body Color
- Sleeve Color
- Collar Color
- adidas Logo Color
- Stripe Colors
- Team Name
- Team Logo
- Player Number
- Player Name
- +2" Length on Body

OPTION PRICING

TWILL

1-Color Twill- Team Name & Front and Back Numbers	\$27.50
2-Color Twill- Team Name & Front and Back Numbers	\$48.50
1-Color Twill- Team Name, Front/Back Numbers, Player Name	\$52.00
2-Color Twill- Team Name, Front/Back 1-Color Player Name	\$73.00

SUBLIMATED PATCHES

Team Name -on Plate	\$20.00
Team Name - Individual Letters	\$30.00
Numbers Front and Back	\$38.00

LEGACY PRO PANT

CUT AND SEW W/ SUBLIMATED SIDE INSERT

M ADØ2394M-PRO

SIZES: **26-52** MSRP: **\$115 Blank**

- Cloth Options: 15, 28
- *28 CLOTH UPCHARGE \$8.00

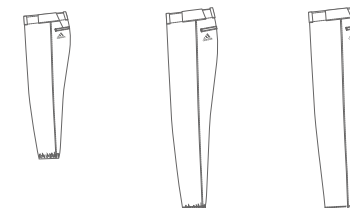
Y ADØ2394B

SIZES: **XS-XL** MSRP: **\$105 Blank**

- Cloth Options: Ø8, 15, 27, 28
- *28 CLOTH UPCHARGE \$8.00



PANT CUT OPTIONS:



KL-PRO

Knee length
Pro Fit cut with
elastic cinch

- Inseam: 20" (+/-2")
- Inseam: 15" (+/-2")

AL-PRO

Ankle length
cut with
elastic cinch

- Inseam: 32" (+/-2")
- Inseam: 25" (+/-2")

OH-PRO

Open Hem Pro
Fit pant

- Inseam: 34" (+/-2")
- Inseam: 28" (+/-2")

CUSTOMIZATION OPTIONS:

- Pant Cut
- Body Color
- Piping Color
- adidas Logo Color
- Team Logo on Hip/Back Belt Loop

*See reference section for additional options and pricing.

OTHER

Rib Neck	\$8.50
Sleeve Braid	\$8.50

*See reference section for additional options and pricing.

Pant Embellishment	Small	\$11.00
	Medium	\$14.00
	Large	\$16.50

GO TO UNIFORMS.ADICUSTOM.COM TO CREATE YOUR LOOK



SUBLIMATED JERSEYS

SUBLIMATED

SIZES: **M** 36-60 MSRP: **M** \$120
Y XS-XL **Y** \$90



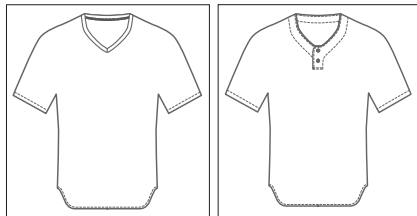
CUSTOMIZATION OPTIONS:

- Body Color
- Collar Trim Color
- Tonal Stripe Color
- adidas Logo Color
- Team Name
- Player Name (\$10 Surcharge)
- Team Logo

STEP #1 CHOOSE CLOTH OPTION

12, 15, 28 or 87
 28 Cloth Upcharge \$8.00

STEP #2 CHOOSE JERSEY CUT



V-NECK

2-BUTTON

STEP #3 CHOOSE DESIGN

Little League Jersey
 Raid
 Storm
 Crush

LITTLE LEAGUE WORLD SERIES JERSEYS



LITTLE LEAGUE JERSEY

M ADØ2429M-PRO **Y** ADØ2429B



CRUSH

M ADØ2434M-PRO **Y** ADØ2434B

*Only available with Set-In-Sleeve



RAID

M ADØ2432M **Y** ADØ2432B



STORM

M ADØ2433M **Y** ADØ2433B

GO TO UNIFORMS.ADICUSTOM.COM TO CREATE YOUR LOOK



custom



REVISED

DOUBLE HEADER TRAINING TOP

SUBLIMATED

M AD03016M

• DOES NOT FIT LIKE CUSTOM JERSEYS

SIZES: **S-5XL**

MSRP: **\$65**

• Cloth Options: 06

Y AD03016Y

SIZES: **XS-XL**

MSRP: **\$55**

• Cloth Options: 06



custom

JERSEY GRAPHIC OPTIONS:



GRAPHIC 'A'



GRAPHIC 'B'



GRAPHIC 'C'



GRAPHIC 'D'



GRAPHIC 'E'

CUSTOMIZATION OPTIONS:

- Body Color • Tonal Colors
- Collar Color
- Sleeve Trim Color
- Player Name +\$10
- Team Logo
- Crew or V-Neck (youth only)
- +2" alteration \$6

GO TO
UNIFORMS.ADICUSTOM.COM
 TO CREATE YOUR LOOK





M FIELDER'S CHOICE 2.0 3/4 BASELAYER

MSRP: **\$50** SIZES: **S-2XL**
 RETAIL INTRO: **At Once** RETAIL EXIT: **7/31/21**

- 100% Seamless Nylon
- Body mapped mesh zones
- 3/4 Length sleeves
- Semi-fitted
- Contrast Heat Transfer adidas logo at left chest

AEROREADY REGULAR FIT **INDY**



CY2085
Power Red

AVAILABLE COLORS:



FIELDER'S CHOICE 2.0 CAGE JACKET

M MSRP: **\$45** SIZES: **XS-3XL, 4XLT**
Y MSRP: **\$35** SIZES: **S-XL**
 RETAIL INTRO: **At Once** RETAIL EXIT: **7/31/22**

- 100% Polyester Twill body
- 78% Polyester/22% Elastane Mesh underarms
- 85% Polyester/15% Elastane Tricot back panel
- 1/4 Zip
- Kangaroo pockets
- White embroidered adidas logo at right chest

AEROREADY REGULAR FIT **INDY**



Tricot Back Panel

AVAILABLE COLORS:



M FIELDER'S CHOICE 2.0 CONVERTIBLE JACKET

MSRP: **\$70** SIZES: **XS-3XL, 4XLT**
 RETAIL INTRO: **10/1/18** RETAIL EXIT: **7/31/22**

- 100% Polyester Twill body
- 78% Polyester/22% Elastane Mesh underarms
- 85% Polyester/15% Elastane Tricot back panel
- 1/4 Zip
- Kangaroo pockets
- Color coded zippered sleeves
- White embroidered adidas logo at right chest

AEROREADY REGULAR FIT **INDY**



Tricot Back Panel

Short Sleeve Converted

AVAILABLE COLORS:





M FIELDER'S CHOICE 2.0 FLEECE

MSRP: \$60

SIZES: XS-3XL, 4XLT

RETAIL INTRO: At Once

RETAIL EXIT: 7/31/2022

- 100% Polyester Double Knit body
- 85% Polyester/15% Elastane Tricot back panel
- Crew neck
- Single needle stitch cutline on upper arm
- Kangaroo pockets
- White embroidered adidas logo at right chest

AEROREADY REGULAR FIT adidas INDY



AVAILABLE COLORS:



CY2057 Power Red/Core Heather
 CY2058 Black/Core Heather
 CY2055 Collegiate Navy/Core Heather
 CY2059 Collegiate Royal/Core Heather



CY2056 Collegiate Purple/Core Heather
 CY2060 Maroon/Core Heather
 CY2062 Dark Green/Core Heather
 CY2064 Light Onix/Core Heather

M FIELDER'S CHOICE 2.0 HOT JACKET

MSRP: \$65

SIZES: XS-3XL, 4XLT

RETAIL INTRO: At Once

RETAIL EXIT: 7/31/2022

- 100% Polyester Interlock body
- 85% Polyester/15% Elastane Tricot back panel
- Hydrophobic interior finish
- Drawcord hem
- White embroidered adidas logo at right chest

AEROREADY REGULAR FIT adidas INDY



AVAILABLE COLORS:



CZ1497 Light Onix/Core Heather

M DUGOUT JACKET ^{NEW STYLE}

MSRP: \$120

SIZES: XS-4XLT

RETAIL INTRO: 10/01/2020

RETAIL EXIT: 07/31/2025

- 100% Nylon body
- Padded filling
- Ribknit collar, waistband, and cuffs
- Snap buttons
- Zippered front pockets
- White embroidered adidas logo at right chest

AEROREADY REGULAR FIT adidas INDY



FR6372 Team Power Red/White
 FT6371 Black/White
 FR6373 Team Navy Blue/White
 FR6371 Team Royal Blue/White



FR6368 Team Coll Purple/White
 FR6369 Team Maroon/White
 FR6370 Team Dark Green/White
 FR6374 Grey4/White



M FIELDER'S CHOICE 2.0 SLIDER

MSRP: **\$50**
 RETAIL INTRO: **At Once**

SIZES: **S-2XL**
 RETAIL EXIT: **07/31/2021**

- 100% Seamless Nylon
- Engineered body mapped woven padding in hips
- Strategic ventilation in gusset
- Cup pocket
- Black Heat Transfer adidas logo on left leg
- Inseam: 10" Size L

AEROREADY PERFORMANCE COMPRESSION FIT **INDY**



AVAILABLE COLORS:



CY2053
 Light Onix

M FIELDER'S CHOICE 2.0 3/4 SLIDER

MSRP: **\$70**
 RETAIL INTRO: **At Once**

SIZES: **S-2XL**
 RETAIL EXIT: **07/31/2021**

- 100% Seamless Nylon
- Engineered body mapped woven padding in hips and knees
- Strategic ventilation in gusset
- Cup pocket
- Black Heat Transfer adidas logo on left leg
- Inseam: 17" Size L

AEROREADY PERFORMANCE COMPRESSION FIT **INDY**



AVAILABLE COLORS:



CY2054
 Light Onix



ADIZERO 4.0 BATTING GLOVE M

MSRP: **\$60** SIZES: **XS-2XL**
 FIRST SHIP: **At Once** LAST SHIP: **TBD**

- Strategically engineered multi-directional back of hand that naturally expands and moves with you to enhance dexterity and fit.
- Pittard's leather overlay and wicking spandex sub-layer delivers optimal structure, support and performance.
- Smooth, perforated and seamless Pittard's sheepskin leather palm gives you the ultimate pro feel while delivering consistent performance and constant grip.
- Injection molded rubber tab with low profile, no-snag hook and loop delivers a secure, adjustable fit



AVAILABLE COLORS:



AB0220-301
Power Red



AB0220-200
Black



AB0220-400
Collegiate Navy



AB0220-440
Collegiate Royal



AB0220-708
Onix



AB0220-109
White

POWER ALLEY 2 Y

MSRP: **\$30** SIZES: **YS-YL**
 FIRST SHIP: **At Once** LAST SHIP: **TBD**

- climacool® spandex expansion panels provide great fit and cool comfort.
- Synthetic overlays deliver stability through the hitting motion without binding
- Durable synthetic leather palm that delivers high performance
- Wide band elastic wrist wrap provides a comfortable and constant fit.
- Injection molded wide tab delivers a secure and adjustable fit.



AVAILABLE COLORS:



AB0221-110
White/
Black



CUSTOM ADIZERO 4.0 BATTING GLOVE

MSRP: **\$65** SIZES: **XS-2XL**
 ORDER DEADLINE: **07/15/2020** SHIP DATE: **01/15/2021**

DETAILS: • MINIMUM - 36
 • SFIA / NCAA / NFHS Approved



STEP 1:
 Choose from the following colors for palm, Primeknit mesh and wrist band:

- White
- Black
- Grey
- Red
- Royal
- Navy

STEP 2:
 Choose from the following liner colors:

- White
- Black
- Grey
- Red
- Royal
- Navy
- Orange
- Teal
- Green
- Gold
- Maroon

STEP 3:
 Choose from the following adidas logo colors:

- White
- Black
- Grey
- Red
- Royal
- Navy
- Orange
- Teal
- Green
- Gold
- Maroon



BACK OF HAND COLORS:



CUSTOM BASEBALL HATS

miadidas CUSTOM FITTED: FITTED WOOL NEW STYLE

MSRP: **\$25** SIZES: **6 5/8, 6 3/4, 6 7/8, 7, 7 1/8, 7 1/4, 7 3/8, 7 1/2, 7 5/8, 7 3/4, 7 7/8, 8**

- 100% Polyester Surge
- Low profile fitted shape with flat visor
- Embroidered adidas logo location per request
- 36 Pieces minimum



miadidas CUSTOM FITTED: FITTED MESH NEW STYLE

MSRP: **\$25** SIZES: **6 5/8, 6 3/4, 6 7/8, 7, 7 1/8, 7 1/4, 7 3/8, 7 1/2, 7 5/8, 7 3/4, 7 7/8, 8**

- 100% Polyester Mesh
- Low profile fitted shape with flat visor
- Embroidered adidas logo location per request
- 36 Pieces minimum



miadidas CUSTOM FLEX FIT: FLEX WOOL NEW STYLE

MSRP: **\$25** SIZES: **XS/S, S/M, M/L, L/XL, XXL**

FIRST SHIP: **At Once**

LAST SHIP: **No End Date**

- 97% Polyester Surge / 3% Spandex
- Low profile flex shape with flat visor
- Embroidered adidas logo location per request
- 36 Pieces minimum



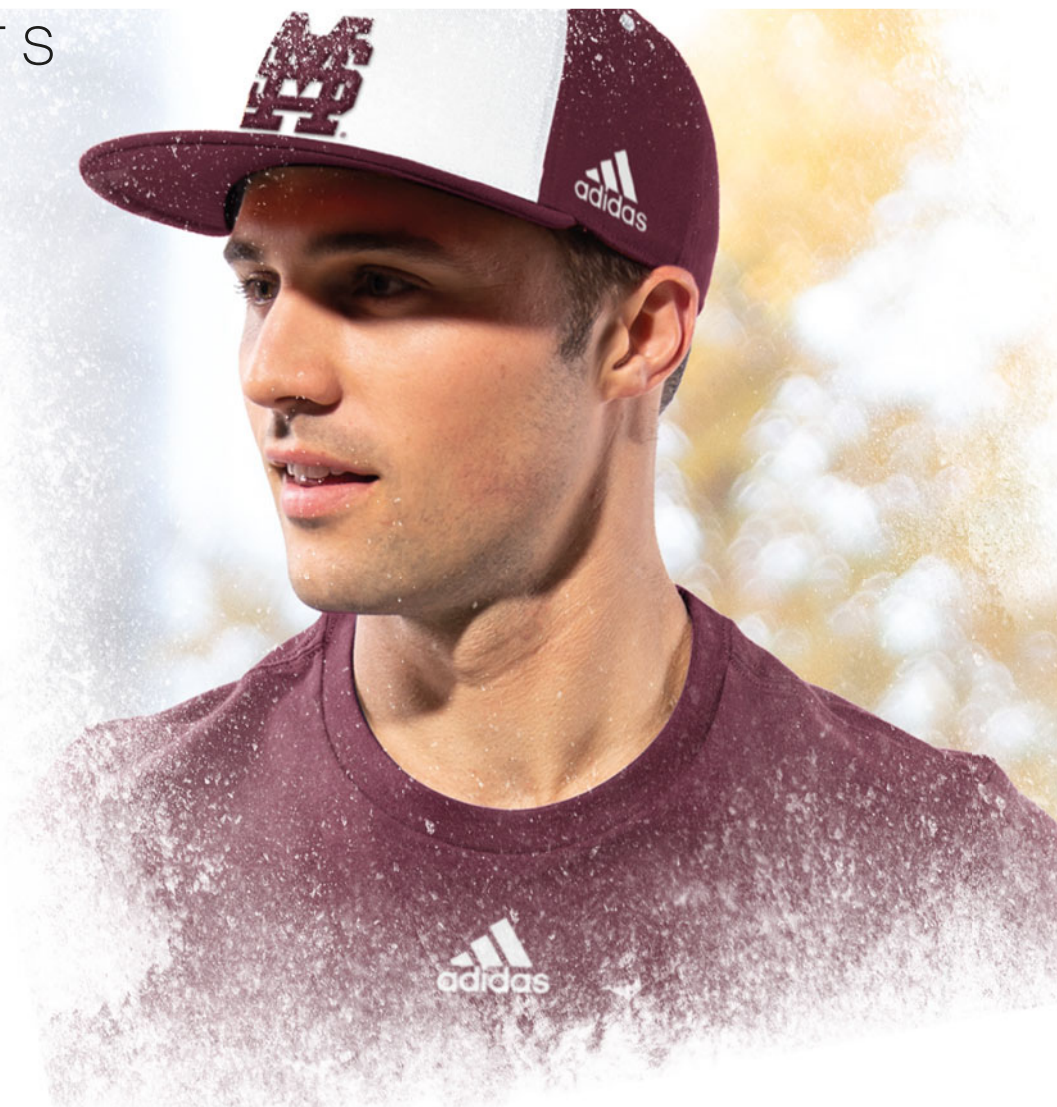
miadidas CUSTOM FLEX FIT: FLEX MESH NEW STYLE

MSRP: **\$25** SIZES: **XS/S, S/M, M/L, L/XL, XXL**

FIRST SHIP: **At Once**

LAST SHIP: **No End Date**

- 97% Polyester Pique Mesh / 3% Spandex
- Low profile flex shape with flat visor
- Embroidered adidas logo location per request
- 36 Pieces minimum



CUSTOMIZATION OPTIONS:

- Front Panels
- Side Panels
- Back Panels
- Visor
- Front Eyelets
- Back Eyelets
- Button
- adidas Logo Color
- Front Panel Piping

COLOR OPTIONS:

	WHITE (001A)		TEAM DARK GREEN (AD8T)
	BLACK (095A)		TEAM COLLEGIATE PURPLE (ADF2)
	TEAM NAVY BLUE (AD8Q)		TEAM ONIX (ADF1)
	TEAM ROYAL BLUE (AD8R)		TEAM LIGHT ONIX (459A)
	TEAM LIGHT BLUE (ADA3)		TEAM SAND (ADF4)
	TEAM MAROON (ADEY)		TEAM REAL MAGENTA (ADP4)
	TEAM COL. BURGUNDY (ADEZ)		CREAM WHITE (A2UB)
	TEAM POWER RED (ADF1)		TEAM DARK BROWN (247A)*
	TEAM ORANGE (ADCY)		DIGI CAMO*
	TEAM COLLEGIATE GOLD (ADF6)		

fitted wool only more colors available for thread options