

PEXCO | BIKE BOLLARD



Specifications

Color: White (standard), with options for custom colors on large orders

Tape Configurations: Available to meet various local requirements

Dimension: 3" in diameter, customizable length between 18" and 36"

CAD Availability: Yes

Testing: Tested at TTI for 45MPH to 50 impacts with no failures



Beauty, Performance and Value. The Perfect Urban Channelizer.

The Pexco Bike Bollard (BB) is designed for urban environments where the speed and the flexibility of post removal is key. Perfect for managing bike lanes and left-turn restrictions in areas with speed limits under 45 MPH, the BB stands as the ideal solution for urban area traffic management.

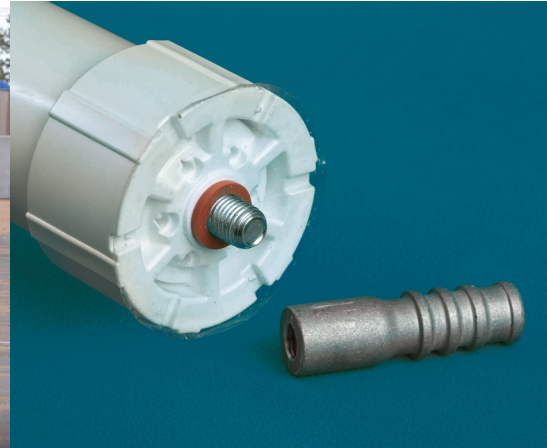
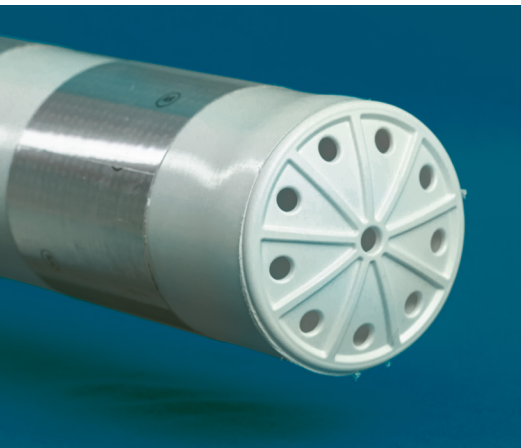
A sleek, cylindrical channelizer post made of polyethylene, standing 3" in diameter with customizable lengths up to 36 inches. Unlike others, the BB utilizes a unique embedded anchor cup design for installation, setting a new standard in urban traffic management solutions.



Contact us for more information / PHONE 1.770.777.8540 / EMAIL hwysales@pexco.com

[PEXCO.COM](https://www.pexco.com)

PEXCO | BIKE BOLLARD



FEATURES



EASE OF INSTALLATION

Utilizes a smaller anchor compatible with SDS Max drills, simplifying installation without special tools.



AMERICAN CRAFTSMANSHIP

Proudly 100% made in the USA, supporting local manufacturing.



ENHANCED VISIBILITY

The 3" diameter post ensures better visibility for safer urban spaces.



URBAN DESIGN

Specifically designed for areas with speed limits below 45 MPH, enhancing urban traffic flow and safety.



MINIMIZED EPOXY

Designed to reduce the amount of expensive epoxy used, stretching your budget even further.



SPEED OF REPLACEMENT

Spin out design makes replacement quick and easy.



CUSTOMER BENEFITS

Cost-Effective: Helps improve performance at a lower cost, making it an economical choice for urban development.

City Post Aesthetic: While resembling the City Post, it is available at a more budget friendly price.

Maintenance-Minimized: Designed for durability and resilience, requiring minimal maintenance and helping to ensure long-term performance.



Contact us for more information / PHONE 1.770.777.8540 / EMAIL hwysales@pexco.com

[PEXCO.COM](https://www.pexco.com)