



PRESIDENT:
Dan Kelly

VICE PRESIDENT:
Shelly Beard

SECRETARY:
Debbie Larson

TREASURER:
Jeff Will

COMMUNICATIONS:
Jeff Kohout

BOARD OF DIRECTORS:
Amy Butani
Conrad Ketelsen
Greg Michaelson

WEBSITE:
www.springlakeassociation.org

SLA BOARD MEETINGS
Held the fourth Monday of each month at 7 p.m. Check website for monthly locations.

EMAIL:
board.sla@gmail.com

APRIL 12, 2015
Spring Lake Annual Membership Meeting
6:30 p.m.



2015 EVENTS

April 12, 2015, 6 p.m.
SLA Annual Meeting,
The Wilds Golf Club

Please join us for an evening of guest speakers, SLA Board updates, socializing and the opportunity to provide input on future activities.

Sign-in and social from 6 p.m. to 6:30 p.m., meeting at 6:30 p.m. and informal gathering starting at 7:30 p.m.

June 20, 2015, 2 p.m.
Ice Cream Social

Everyone is invited to enjoy a refreshing treat near the ski jump.

July 4, 2015, 4 p.m.
Annual Boat Parade

Sponsored by the Thomsen's (D.M. Thomsen@mchsi.com). This event has been a lake favorite tradition for years.

Please meet on the west side of the lake and join your neighbors for the parade.

July 25, 2015, 1 p.m.
Spring Lake Annual Flotilla

A summer gathering for Spring Lake residents, sponsored by Ken and Marcia Rodning. Tie up to share food and fun.

August 22, 2015, 3 pm
Spring Lake Association Picnic
This event will be held at the new park pavilion near the boat launch at the end of Vergus Avenue.

Potluck style-please bring a dish to share and your own beverages. The Spring Lake Association will provide hot dogs and hamburgers.

Fun and games for all. So bring the entire family for an afternoon of lake fun.



Spring Lake Association
P.O. Box 631
Prior Lake, MN 55372

You may ask yourself what is the Spring Lake Association? The Spring Lake Association (SLA) is a group of concerned citizens with a common interest for Spring Lake. We are a conduit of information to our members regarding social events and current issues that impact Spring Lake.

Currently SLA hosts four to five events each year including a picnic, flotilla, 4th of July events, ice fishing tournament, and its annual meeting. SLA also makes sure we have a presence in the community with areas that impact Spring Lake. This has included carp population studies, lake clean-up, lake mapping, and other environmental issues.

Future projects that SLA Board members are working on include an overhaul of the website, additional lake events, creation of promotional items (shirts, can koozies, etc.), and more community involvement.

The current initiative in 2015 is to increase SLA membership. We ask that anyone who lives on the lake, by the lake, or uses the lake, to become a member. The more members the SLA has, the more activities and services we can provide the Spring Lake community.

SLA APPAREL IS HERE!



The Spring Lake Association is now taking orders for SLA-themed apparel. The association's logo will be embroidered on hooded sweatshirts as well as a women's v-neck tee shirt and men's tee shirt. Check the SLA website for pricing and information on how to order.

Spring Lake Association Membership Form

Please make your check payable to Spring Lake Association

Name: _____ Email: _____

Address: _____ City: _____ State: _____ Zip: _____ Phone: _____

- Dues: \$30 per household per year (Valid until April 2016)
 Additional donation I would like to help with _____

Please return to: Spring Lake Association, P.O. Box 631, Prior Lake, MN 55372



2015 lake calendar

April 12
ANNUAL MEETING

June 20
ICE CREAM SOCIAL

July 4
ANNUAL BOAT PARADE

July 25
BOAT FLOTILLA

August 22
FAMILY PICNIC

Spring Lake Association

Sunday, April 12, 6 pm

Association Plans Annual Meeting

The Spring Lake Association has scheduled its all-important annual meeting for Sunday night, April 12 at The Wilds Golf Club. The sign-in and social will run from 6 p.m. to 6:30 p.m. with the formal meeting portion starting at 6:30 p.m. and concluding by approximately 7:30 p.m. Appetizers will be served and several free prize drawings will also be awarded.

Through our many social events, regular newsletters and website (www.springlakeassociation.org) we hope to provide reliable information on upcoming events, potential issues and future goals for this important lake that has been enjoyed by so many area residents throughout the years," explained Kelly.

Anyone interested in the future of Spring Lake - association members and non-members alike - are encouraged to attend this event.

"In addition, we hope to build a strong lake community to help preserve and continue to improve the lake's quality so that we can continue enjoying the lake community to help preserve and continue to improve the lake's quality so that we, and future generations, can enjoy this wonderful lake."

According to SLA President, Dan Kelly, the association's main objective will continue to be educating and uniting area residents and those who utilize this precious local natural resource.

Anyone with specific lake concerns, questions or social event ideas is encouraged to bring those matters to the upcoming meeting.



2014 Flood Damage Pictured is a culvert that was blow-out along the outlet channel last summer. Flood details from the PL/SLWD inside.

www.springlakeassociation.org



Spring Lake Association

University Study Yields “Fishy” Results

Last September 14, during a four hour period from 10 a.m. until 2 p.m. the Prior Lake/Spring Lake Watershed District (PLSLWD) hired a professor and his collegiate team from St. Mary’s University of Winona to conduct an electrofishing experiment for Carp on Arctic Lake, Cedar Lake and Spring Lake. Also participating were six Spring Lake volunteer boats including several board members of the Spring Lake Association.



The experiment was conducted to provide an estimate of the carp populations of these three lakes. With a permit from the DNR, the lead boat with the electrofishing gear shocked the fish for several seconds which

allowed the following boats to net any stunned fish. Any unretrieved game fish would quickly regain strength and swim away with no long-term effects. One of the more interesting fish observed was a large white bass, also known as a striped bass, which were stocked in the lake many years ago

by the DNR. A total of 33 carp, as large as 20lbs., were netted on Spring Lake, all of which came from the east end of the lake.

It was determined that Spring Lake has approximately 16,500 adult carp based on lake studies completed by St. Mary’s. This study determined that Arctic Lake is a rearing pond or spawning location for adult carp, which eventually move to Prior Lake and Spring Lake. The PLSLWD is planning to construct a carp barrier in the channel to Arctic Lake in order to stop this spawning location. For a complete analysis, visit the PLSLWD website and view the 10/14/14 meeting to see the entire university presentation.

2015 Event is August 22

Spring Lake Area Residents Enjoy Annual SLA Picnic

On August 16, 2014 the SLA hosted the annual SLA picnic at the park pavilion at the end of Raymond Avenue. The event was attended by residents from every corner of the lake including neighbors from Spring Lake Estates. The picnic was open to all SLA members and non-SLA Spring Lake residents alike.

and hot dog dinner along with an assortment of other foods. This year’s picnic event is scheduled for XX, with a beautiful pavilion to provide shelter in case of inclement weather.

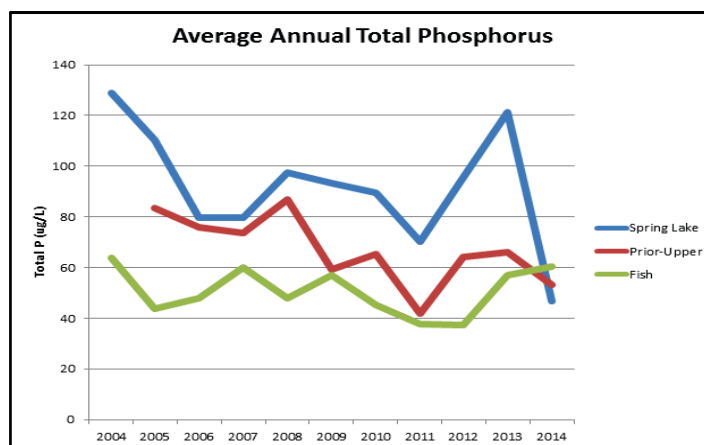
Approximately 70 people attended the event and were greeted with a beautiful, sunny Saturday. Among the highlights was the dunk tank to which the children gave their full attention. There were also gift bags to entertain the children and a DJ who provided a wide range of music to stir our memories. Every attendee agreed that it was a great event.

The SLA board members provided a grilled hamburger



Alum Treatment Brings Promising Results

A full year’s worth of data has now been collected since the 2013 Alum treatment, and the results are very promising. Since the Three Rivers Park District started monitoring in 2004, Spring Lake has averaged around 100 µg/L of Total Phosphorus. When compared to other nearby lakes, Spring Lake’s phosphorus concentrations were consistently higher than Upper Prior and Fish Lake. However, in 2014, the average was 47 µg/L. Not only was 2014 the lowest recorded average phosphorus concentration in Spring Lake in 10 years, but also the first time during the study period that concentrations were lower than both Upper Prior and Fish Lake.



External phosphorus sources are also currently being evaluated for potential phosphorus reduction projects. According to the TMDL study, treatment of these external sources of phosphorus is the other critical piece of the puzzle to get Spring Lake off of the state’s list of impaired waters.

The Scott Soil and Water Conservation District is currently conducting a Subwatershed Assessment project for Spring Lake. This assessment includes a detailed study of the land uses in the most polluted subwatersheds (smaller drainage areas within the main Spring Lake watershed) that flow into Spring Lake. In early 2015, the completed study report will list the most cost effective land conservation projects and guide future project implementation.

Past efforts to reduce phosphorus from the Spring Lake watershed include: installing filter strips (planting vegetation between crop fields and the stream or ditch to reduce sediment from reaching



The 2013 summer Alum treatment on Spring Lake resulted in the lowest phosphorous average in ten years.

the stream or ditch), restoring wetlands (most current restoration at County Highway 12 and 17 intersection on west side of Spring Lake), and treating County Ditch 13 with Ferric Chloride (which reduces phosphorus) before reaching Spring Lake.

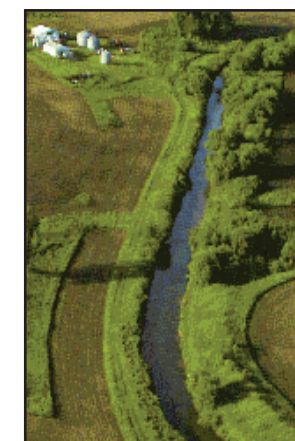
To learn more about the Alum treatment of Spring Lake, please visit the PLSLWD’s webpage: go to www.plslwd.org and click on the ‘Projects’ tab to get to the Spring Lake Alum Treatment page. For questions or more information, please contact Jaime Rockney, Water Resources Specialist at the PLSLWD, at 952-440-0068 or email her at jrockney@plslwd.org.



The image at left shows Spring Lake on the first day (October 22) of the 2013 Alum treatment. At right is the lake on the final day of treatment (November 1).

Farmer Involvement To Improve Lake Quality

The Prior Lake – Spring Lake Watershed District (PLSLWD) is partnering with Scott County Soil & Water Conservation District (SWCD) to form and support a Farmer-led Council. This Farmer-led Council will be a critical partner to improving and advancing the sound planning tools, educational resources, and technical and financial assistance available in the watershed district’s agricultural community.



Buffer strips protect this farmland stream

these and other valued water resources. Studies by the Watershed District show that nutrients enter the lake with rain and snow-melt runoff from both urban and rural lands.

The PL/SLWD has engaged with local farmers to build a Farmer-led Council, or FLC, to help reduce nutrient loading from all sources, to levels that meet or exceed state water quality standards.

Agricultural lands make up the majority of the landscape in the Spring Lake and Upper Prior Lake watersheds. As such, farmers are the most important stewards of the land and their active input and participation is critical to achieving the water quality goals of PLSLWD and SWCD.

Local producers in the watershed who would like to participate in the Farmer-led Council, are encouraged to contact Troy Kuphal at the SWCD at 952-492-5425 or Maggie Karschnia at PLSLWD at 952-447-9808.

Flood Reduction Efforts Continue Watershed Flood Damage

The 2014 flood affected the Prior Lake-Spring Lake Watershed District and its partners in a variety of ways. There was nearly \$2 million worth of damage in the Prior Lake Outlet Channel, a stormwater conveyance system that begins at the Outlet Structure in Lower Prior Lake, continues over seven miles and discharges into the Minnesota River.

The District is working with the Federal Emergency Management Administration and the State’s Homeland Security Emergency Management/Department of Public Safety (HSEM) to secure federal funding for damages according to Prior Lake/Spring Lake Watershed District Administrator Diane Lynch. In addition, she added that the District is working with Scott County and local legislators to help secure financial support to pay for the local match required for FEMA funds and additional money that may be needed to complete the repairs.

The District is also involved in an important study that will help it respond to future flooding events. Lynch explained that the Stormwater Management and Flood Mitigation Study is a project sponsored by the Prior Lake-Spring Lake Watershed District and the City of Prior Lake, in collaboration with Spring Lake Township that updates the watershed’s model, reviews flood-related issues and projects, identifies potential flood reduction strategies and develops an implementation plan. The project began in February and will go through August 2015.



Diane Lynch, PL/SLWD Administrator

“There is a public outreach component which includes community-wide meetings and more targeted meetings with elected and appointed officials and key community leaders,” Lynch concluded.

For more information about flood damage or planning efforts, residents can contact Diane Lynch, at the Prior Lake-Spring Lake Watershed District, by calling 952-440-0067 or emailing her at dlynch@plslwd.org.