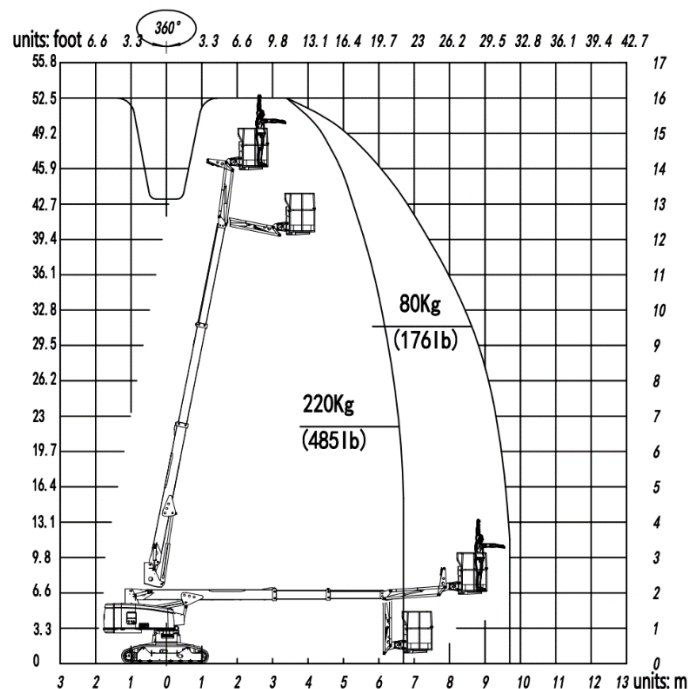




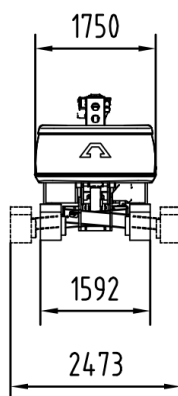
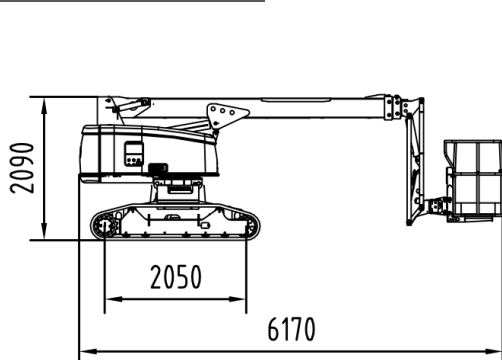
Crawler Lift CB16

Standard Parameters

| | | |
|--------------------------|---|----------|
| Model | CB16 | |
| Max. work height | 16.00m | 53' |
| Max. platform height | 14.00m | 47' |
| Load capacity | 220kg | 485lb |
| Lateral Outreach | 9.8m at 80kg 32' at 176lb 6.8m at 220kg 22' at 485lb | |
| Jib articulation | 120° | |
| Turntable rotation | 360° (non-continuous) | |
| Size of platform | 0.9×0.8×1.1m 35" x 31.5" x 43" | |
| Stowed length | 6.17m | 243" |
| Stowed width | 1.75m | 69" |
| Stowed height | 2.09m | 82" |
| Total weight | 5800kg | 12,787lb |
| Driving speed km/h | 0-2.5 | |
| Max. work slope | 15° | |
| Max. climbing ability | 15° | |
| 2 power sources : | Yanmar/Kubota 14KW | |
| | AC 220v /110 V | |



Machine dimensions



Standard Features

- ▶ Unique crawler lift without outriggers can work in a 15° slope
- ▶ German made HMI and controller featured Input/output data allows user's on-site diagnosis or speed adjustment
- ▶ Radio + cable control allows operator on ground when in traction
- ▶ Self-leveling basket, basket rotation $\pm 90^\circ$
- ▶ Hydraulically extendable crawlers in one axle can work in challenging areas
- ▶ Weight dispersal low ground pressure
- ▶ Reach standards of ISO, CE and ANSI/CSA

Goman Lift Tel: 514 318 6826 gomanlift@outlook.com

Add: 5589 Ch Saint Francois, Saint Laurent, QC H4S 1W6