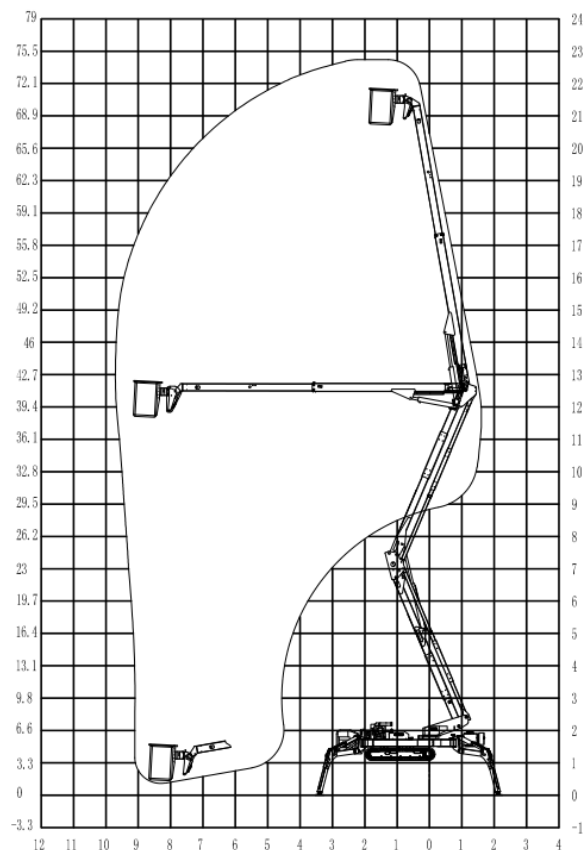


Fully hydraulic control available

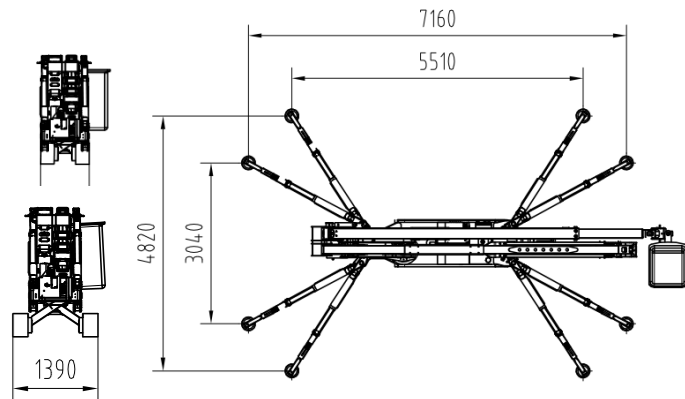
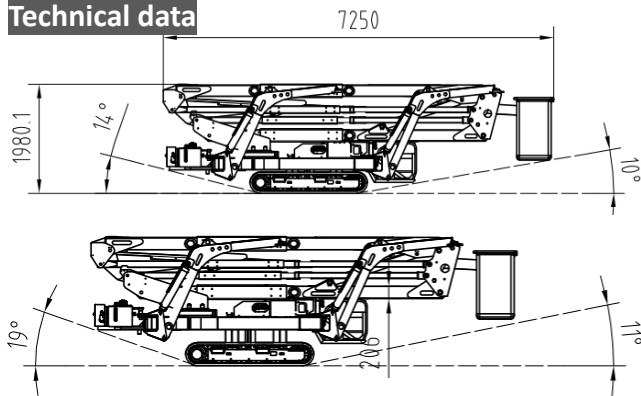


Standard Parameters

Model	X23C	GXC75
Max. work height	23.00m	75.5'
Max. platform height	21.00m	68.90'
Working bucket type	One man bucket	
Load capacity	160kg	352lb
Lateral Outreach	10.1m	33'
Turntable rotation	360° non continuous	
Size of working bucket	0.7*0.62*1.1m	27.5" x 24.4" x 43"
Overall stowed length	7.46m	293.7"
Overall stowed width	0.89m	35"
Overall stowed height	1.99m	78.3"
Outrigger support size (Wide leg)	7.16*3.04m	281.8" x 119.6"
Outrigger support size (Narrow leg)	5.51*4.82m	216.9" x 189.7"
Total weight (approx.) full remote	4,100kgs	9,030lbs
HYDRAULIC CONTROL FOR BOOMS	4,458kgs	9,828lbs
Driving speed km/h	0-2.0	
Max. approach angle	19° with crawler extended	
Max. work slope	21°	
Max. climbing ability	23°	
Power	Diesel(Kubota D1105 18.2KW) + 110V	



Technical data



Standard Features

FRP components from TX, USA

- ▶ Reliable quality and superior performance
- ▶ Radio control traction, outriggers and booms,
- ▶ German made HMI and PLC controller, stainless control box
- ▶ Automatic outrigger leveling and basket rotation
- ▶ Hydraulic adjustable crawlers for height and width
- ▶ Hydraulically arms and outrigger interlock
- ▶ Lubrication-free sleeve to reduce daily maintenance;
- ▶ Double insulation boom design ensures personnel safety;
- ▶ Reaches standards of ANSI92.2

