

**GOMAN**LIFT

**Spider X21**

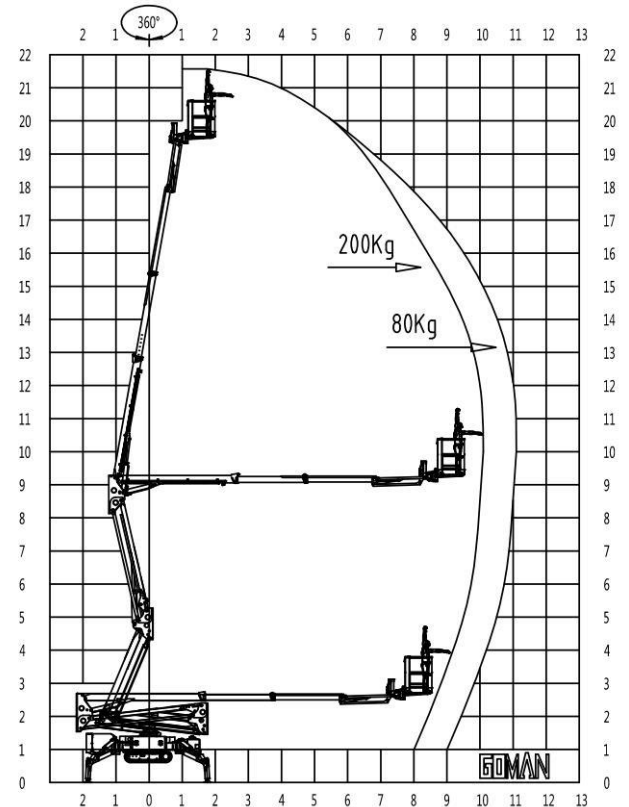
**GX71**



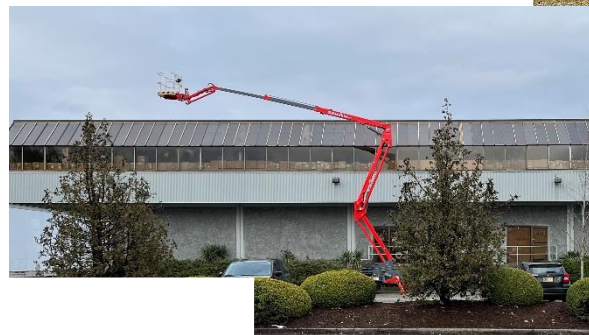
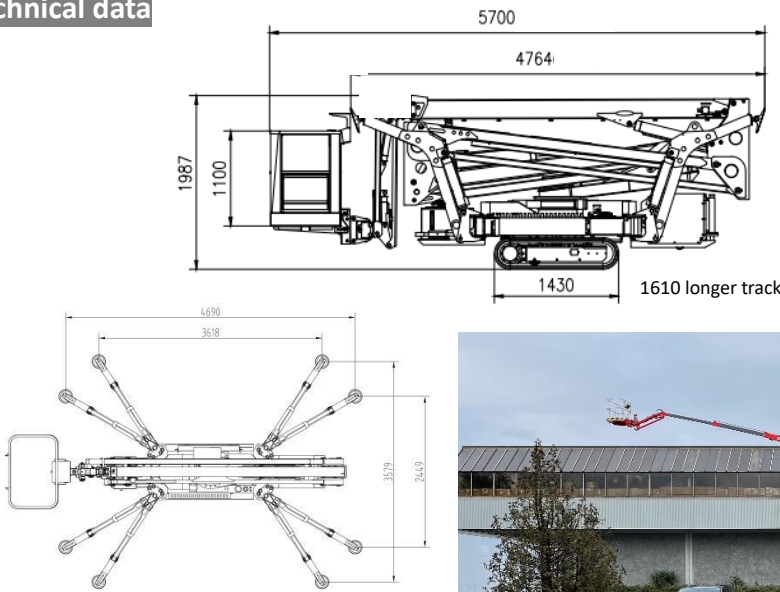


Standard Parameters

Model	X21	GX71	
Max. work height	21.60m	71'	
Max. platform height	19.60m	64.3'	
Load capacity	200kg	500lb	
Lateral Outreach	200kg	440lb	80kg 176lb
	10.0m	32'	11.0m 36'
Jib articulation	120°		
Turntable rotation	360° (non-continuous)		
Basket rotation	+/-90°		
Size of platform	1.2*0.8*1.1m	47" x 31.5" x 43"	
Overall stowed length (*basket at side)	5.70m/5.07m*	224"/199.6"*	
Overall stowed length (removed basket)	4.57m	15'	
Overall stowed width	0.88m	35"	
Overall stowed height	1.99m	78"	
Ground clearance when jacked up	760mm	30"	
*Total weight	2850kg	6283lb	
*Driving speed km/h		0-2.5	
Max. work slope		20%	
*Max. climbing ability		30%	
Power source	Gas engine + 110V AC motor		



Technical data



Standard Features

- ▶ Compact design, AC 16A outlet in the basket
- ▶ German made HMI and PLC controller, stainless control box
- ▶ cable control, integrated radio function for free
- ▶ Self-leveling basket, and interchangeable with hydraulic winch or other hydraulic tools as option
- ▶ Automatic outrigger leveling and 180° basket rotation
- ▶ hydraulic adjustable crawlers for height and width
- ▶ Hydraulically arms and outrigger interlock
- ▶ Weight dispersal low ground pressure; track width 200/230mm
- ▶ Made of high tensile steel, hot dip galvanized boom available
- ▶ Reaches standards of ISO, CE and ANSI/CSA

X21 (GX69) Price for Standard Parameters & Features, options

Optional

- Diesel engine Kubota/Yanmar
- Lead-acid battery 48V 165Ah
- Lithium battery 48v 250Ah
- One-man FRP basket
- Lithium battery lowering system
- 2<sup>nd</sup> lithium power 24V200Ah
- Hydraulic tool outlet

**Contact:** Goman Lift Tel: 514 318 6826 [gomanlift@outlook.com](mailto:gomanlift@outlook.com)  
 Address: 8100G Trans Canada Route, Saint Laurent, QC H4S 1M5