

GOMANLIFT

Spider X28

GX95

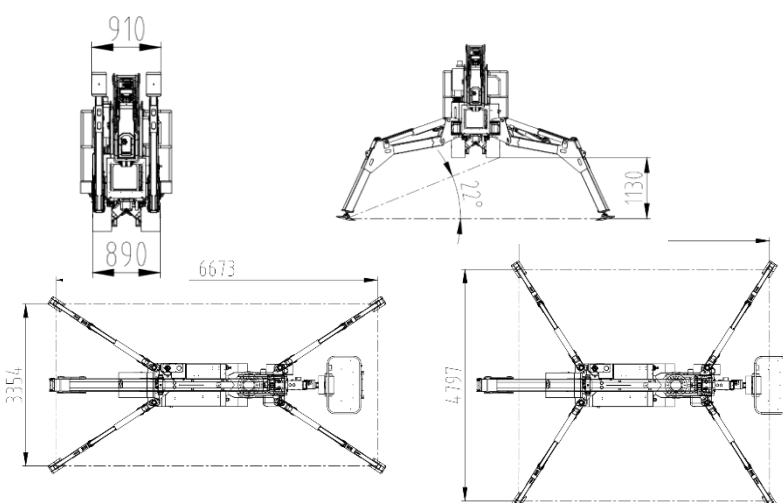
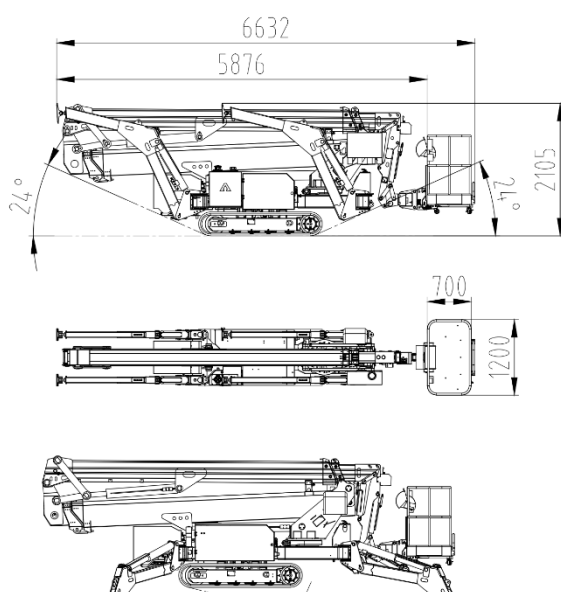
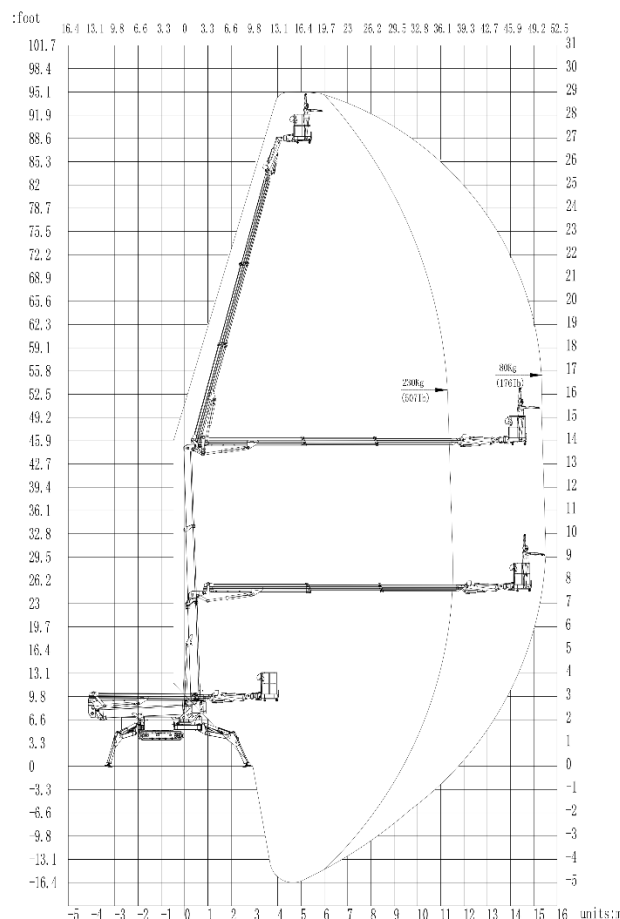


Standard Parameters

Model	X28	GX95
Max. work height	29.0m	95'
Max. platform height	27.0m	88.5'
Load capacity	230kg	500lb
Lateral Outreach	15.50m (80kg/167lb)	50'
Basket rotation	180°	
Jib articulation	180°	
Turntable rotation	450° non continuous	
Size of platform	1.2*0.8m	47" x 32"
Overall stowed length	6.63m	261"
Overall stowed width	1.24m	49" with basket
	0.89m	35.2" without basket
Overall stowed height	2.05m	80.7"
Total weight*	4540kg	1000lbs
Driving speed km/h	0-2.2	
Max. work slope	14° front to rear; 22° side to side	
Max. climbing ability	30%	
Standard 2 Power Sources	230V(110V 60Hz) AC power + Diesel engine 18.5Kw	

Dimension

*it varies with different options.



Standard Features

- ▶ German made IFM controller with HMI and valves
- ▶ Hydraulic extendable crawlers for adjusting height and width
- ▶ Battery emergency lowering (optional)
- ▶ Auto-leveling basket and outriggers
- ▶ Radio (+ cable) control for all movement
- ▶ 360°non-continuous turntable rotation
- ▶ Hydraulically arms and outrigger interlocks
- ▶ Load sensor, detachable basket
- ▶ 230v(110v 60Hz) 50Hz 16A outlet in the work platform
- ▶ Reaches standards of ISO, CE and ANSI/CSA



X28 (GX92) Price for Standard Parameters & Features

Options:

Lithium battery as main power or secondary power

Contact: Goman Lift Tel: 514 318 6826 gomanlift@outlook.com

Address: 5589 Ch. Saint Francois, Saint Laurent, QC H4S 1W6